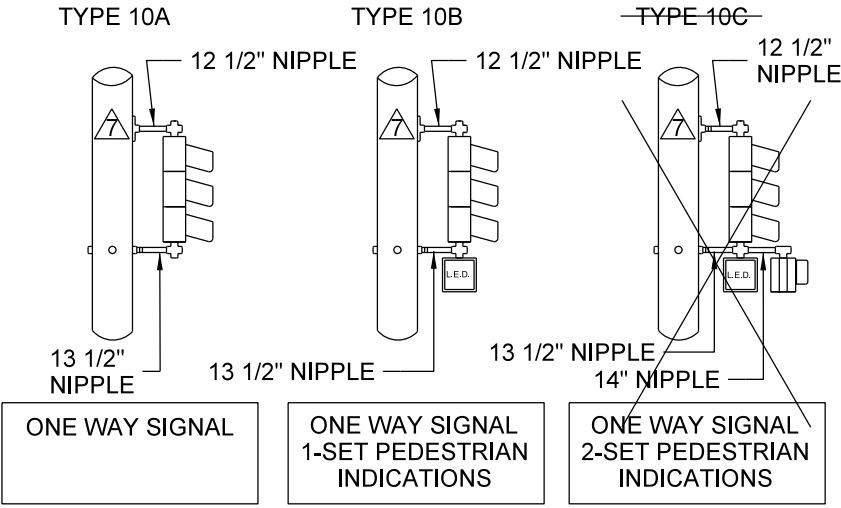
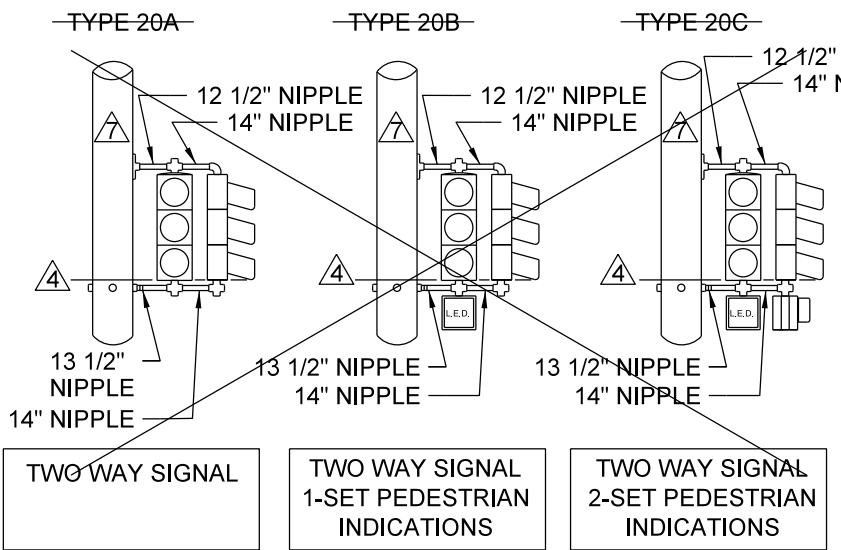


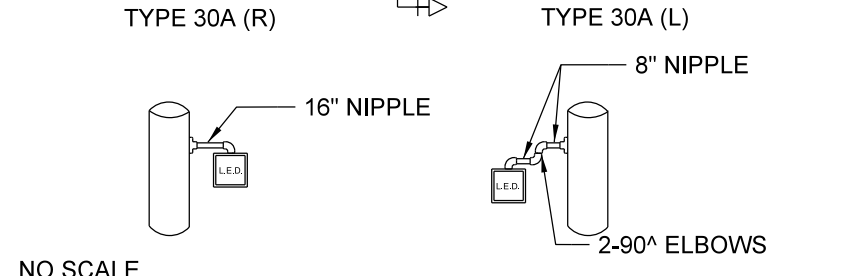
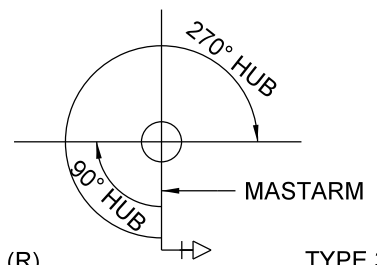
BRACKETING FOR VEHICLE/PEDESTRIAN INDICATIONS
 PIPE DIMENSIONS SHOWN ARE FOR 12" VEHICLE
 AND PEDESTRIAN COUNTDOWN TIMERS



LEGEND	
	1-1/2" IRON PIPE UNLESS SPECIFIED
	90 DEG. ELBOW-THREAD BOTH ENDS.
	TEE-THREAD ALL ENDS.
	CROSS-THREAD ALL ENDS.
	POLE BRACKET



- NOTES**
1. ALL MOUNTING SHOWN ARE TYPICAL-SUBJECT TO MINOR REV.
 2. NUMBER OF LENSES PER SIGNAL FACE SHALL BE AS REQD. IN PLANS OR SPECIAL PROVISIONS.
 3. BACKGROUND SHIELDS PROVIDED AS REQD. IN PLANS OR SPECIAL PROVISIONS.
 4. BOTTOMS OF LOWER LENSES IN HEAD ASSEMBLY SHALL BE AT SAME ELEVATION.
 5. ALL PIPE FITTINGS SHALL BE MALLEABLE IRON.
 6. UNUSED OPENING SHALL BE PLUGGED W/ ALUMINUM PIPECAPS.
 7. POLE BRACKET ATTACHED BY DRILLING AND TAPPING POLE. BRACKET ATTACHED WITH 2-3/8" X 1 1/2" STEEL HEX HEAD COARSE THREADED BOLTS.
 8. ALL HEADS MUST BE PLUMB & LEVEL
 9. ALL PIPE FITTINGS AND HEADS SHALL BE MADE WRENCH TIGHT.
 10. ALL BRACKETS & FITTINGS SHALL BE PAINTED W/ SIGNAL YELLOW PER SPECS.
 11. ALL PIPE THREADS SHALL BE NPT (NATIONAL PIPE THREAD) AS REQUIRED AT THE END OF THE PIPE.



NO SCALE

	DRW: EAV	DATE: 8/2/22	HEAD - SIGNAL BRACKETING - POLE-MOUNTED VEHICLE/PEDESTRIAN INDICATIONS	STANDARD PLATE NO. TRAF-1330-R7
	APP: DRP	DATE: 8/2/22		