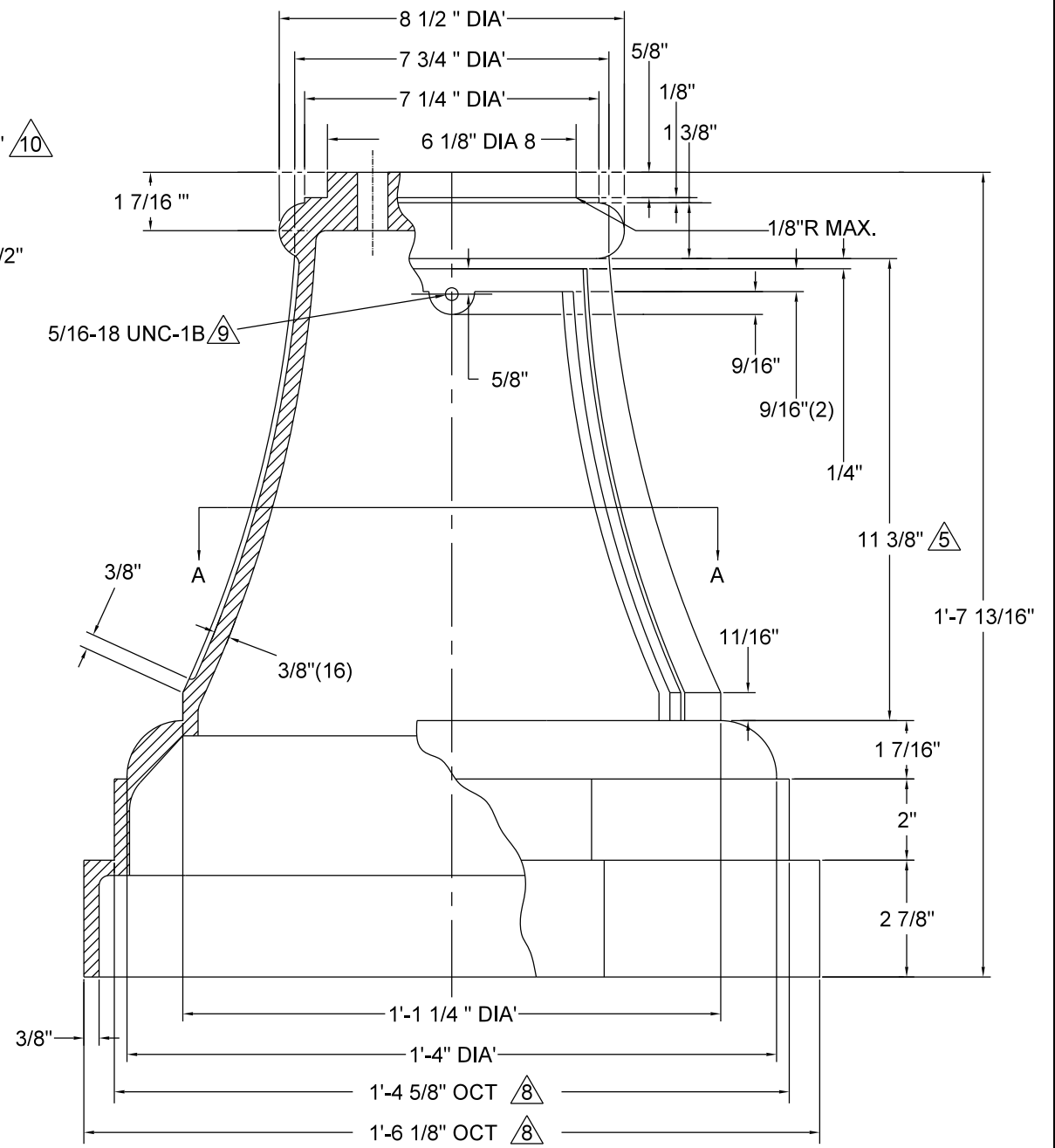
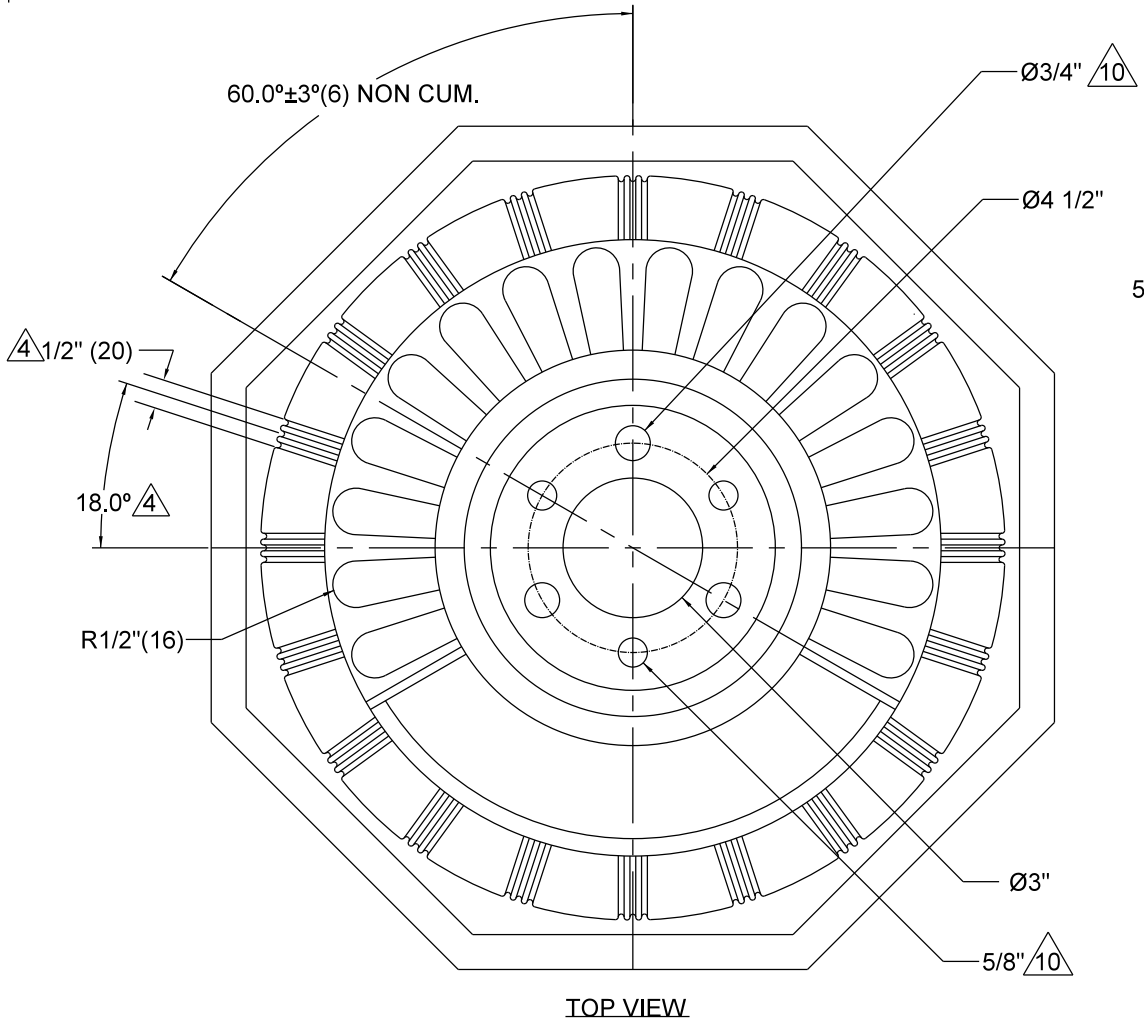


1. MATL: CAST IRON USING 20000 MIN. TENSILE, WT 115 LBS ± 10%
2. FINISH- DEBURR, GRIT BLAST, SOLVENT CLEAN & PAINT ONE COAT "DAMP-PROOF RED RUSTOLEUM" PRIMER. FINISH COAT SHOULD BE MPLS GREEN, PAINTED BY MPLS STAFF.
3. INDEXING OF HOLE PATTERN MUST BE AS SHOWN.
4. DECORATIVE GROOVES 3/32" WIDE x 3/64" DEEP- 20 GROUPS OF 3.
5. DOOR OPENING TO BE ADJUSTED TO FIT DOOR (INCL. PAINT)- 1/8 x 45°x 1" (2) CHAMFERS ON DOOR PERMISSIBLE TO EASE INSTALLING W/O EXCESSIVE GAPS.
6. PROVIDE (1) 5/16"- 18 x 3/4" FLAT HEAD BRASS SCREW WITH ASSEMBLY.
7. DIM W/O TOL ARE REF. ONLY BUT SHALL BE CLOSE ENOUGH SO THERE IS NO VISUAL DIFFERENCES FROM EXISTING.
8. 1-1/2° MAX DRAFT TO DECR DIM.
9. DRILL AND TAP TO ALLOW FOR INTERCHANGEABLE COVERS.
10. 1-1/2° MAX DRAFT TO INCR DIM.



DRW: EAV DATE: 11/3/20
APP: DRP DATE: 11/3/20

BASE - SIGNAL
PEDESTAL SIGNAL CASTING

STANDARD
PLATE
NO.
TRAF-1175-R1