



# Roosevelt High School Safe Routes to School

Virginie Nadimi  
City of Minneapolis Public Works  
Associate Transportation Planner

# Project Background

- **Why Roosevelt High School?**
  - 79% of Roosevelt students are non-white
  - 68% of Roosevelt students qualify for free or reduced lunch
  - 30% of Roosevelt students live within 1 mile of school
- **Safety concerns**
  - 28<sup>th</sup> Ave from 38<sup>th</sup> St- 42<sup>nd</sup> St is a pedestrian crash concentration corridor
  - 85<sup>th</sup> percentile speeds on 28<sup>th</sup> Ave S: 34mph

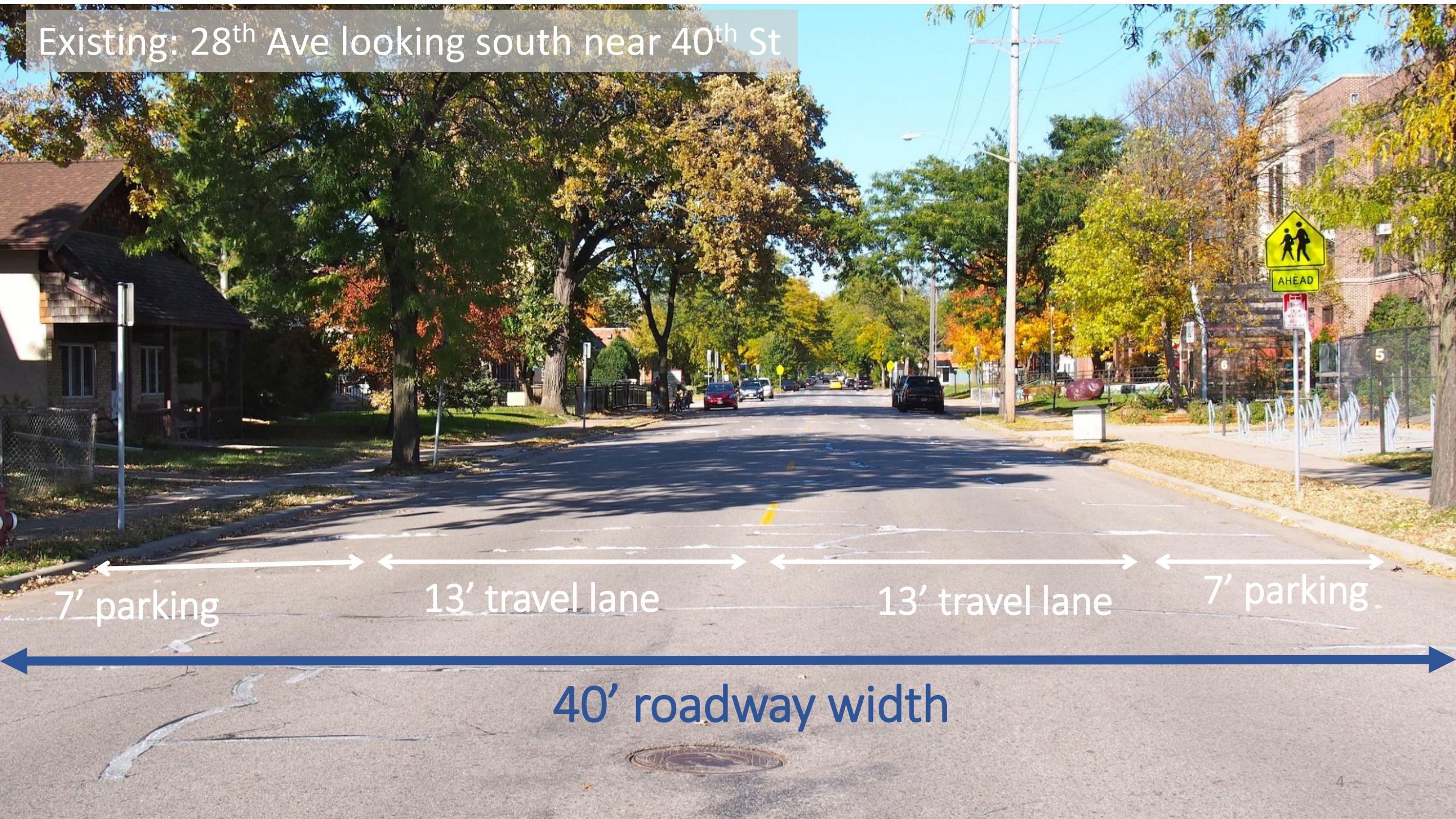
# Project Schedule

- **Spring 2018-Fall 2019:** Collect data and feedback from Roosevelt students, staff, and the surrounding neighborhood
- **Winter 2019:** Develop preliminary and final concept
- **Summer/Fall 2019:** Construct project





Existing: 28<sup>th</sup> Ave looking south near 40<sup>th</sup> St



7' parking

13' travel lane

13' travel lane

7' parking

40' roadway width



# Issues – midblock crossings





# Issues – chaotic traffic operations



# Project Goals

- Reduce speeds and calm traffic
- Create safer + shorter crossings for people walking
- Improve safety and visibility for people crossing 28<sup>th</sup> Ave
- Improve pedestrian crossing predictability



# Proposed improvement: pedestrian median islands



Pedestrian median island on 46<sup>th</sup> Street



## Pedestrian Median Benefits:

- Shortened pedestrian crossings
- Improved pedestrian visibility
- Reduce car speeds
- Calms traffic
- Space for landscaping/greening



Pedestrian median island on 46<sup>th</sup> Street



# Existing

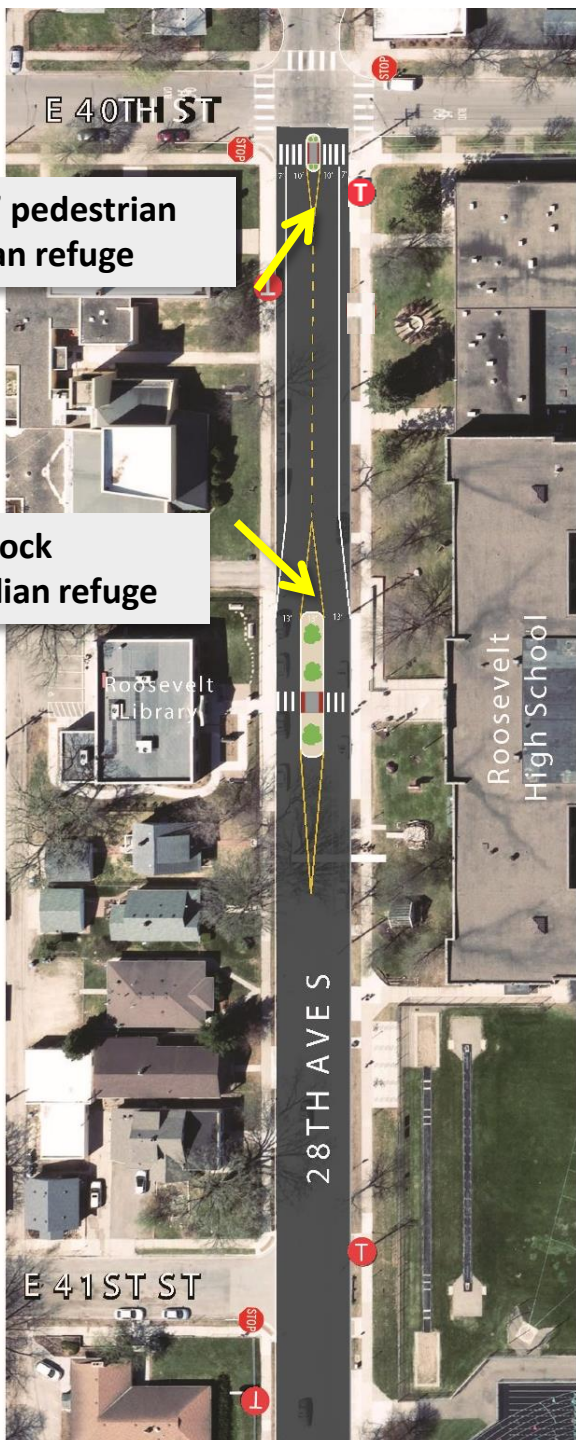
Observed pedestrian crossings



# Proposed

6'x12' pedestrian median refuge

14'x100' mid-block pedestrian median refuge

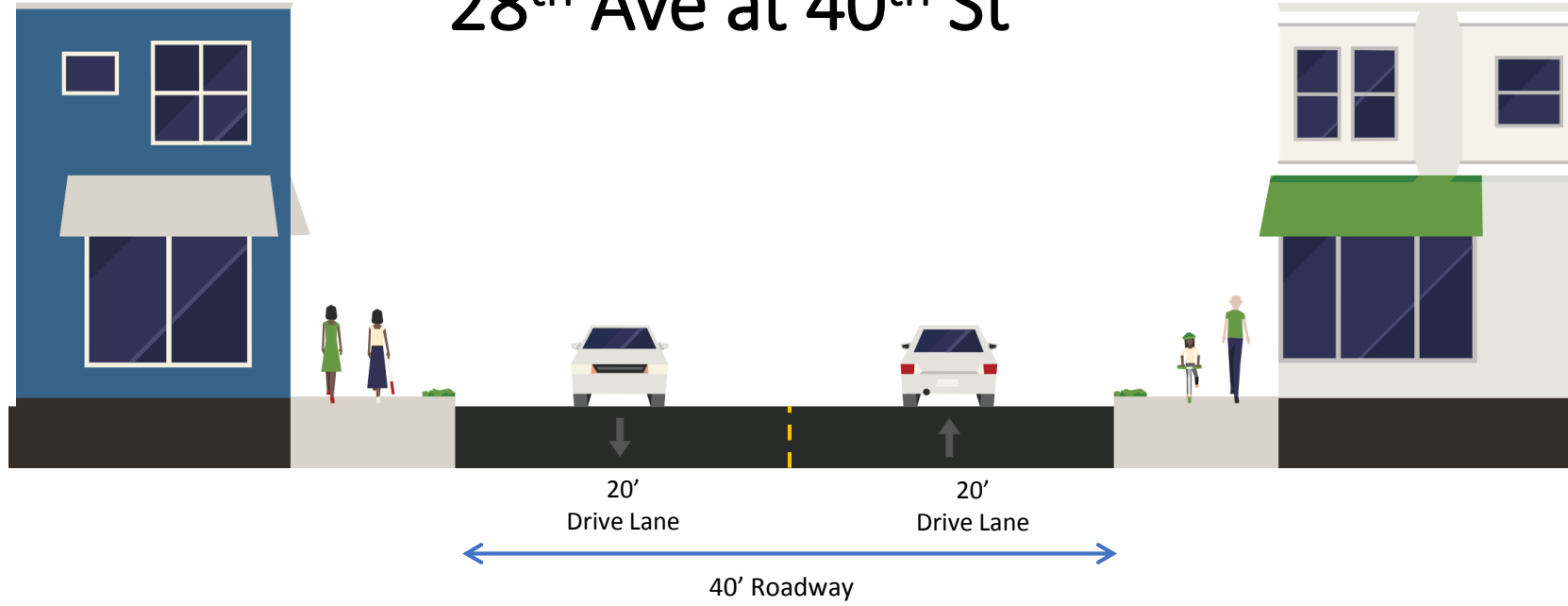


*Exact dimensions of medians are to be determined*

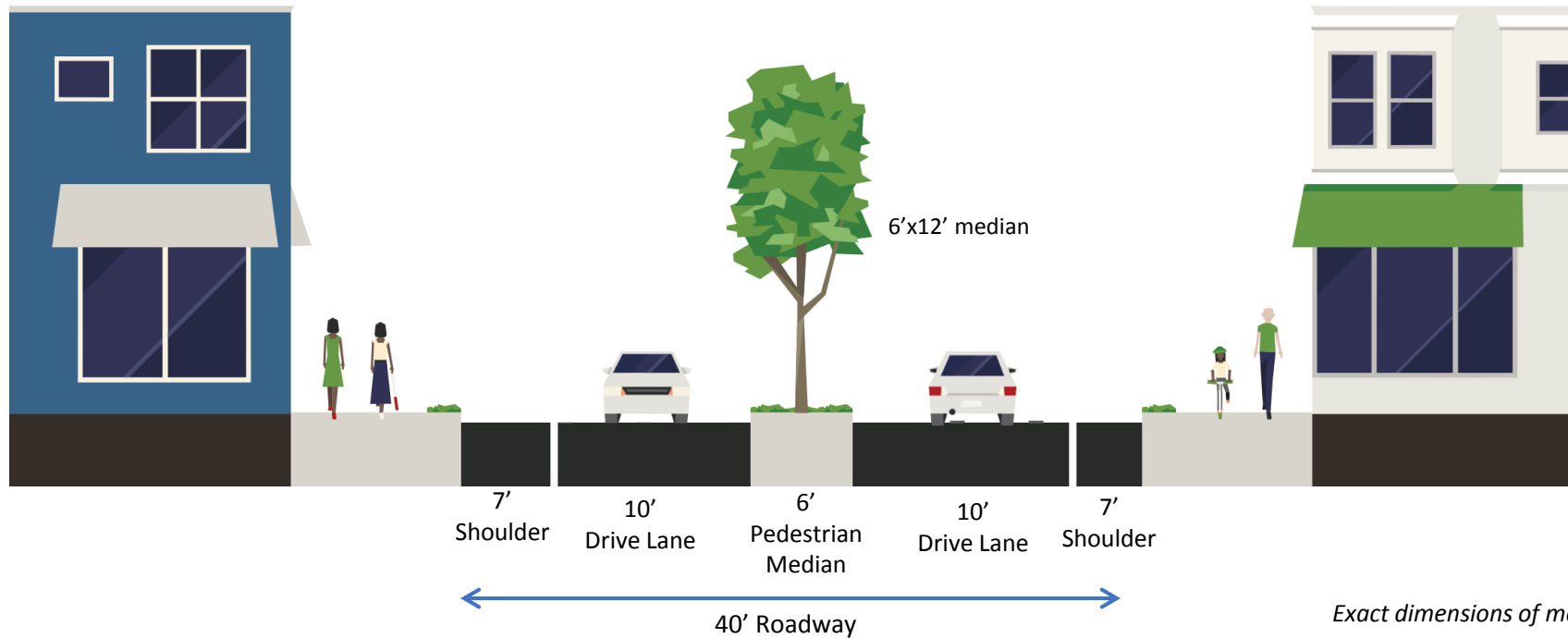


# 28<sup>th</sup> Ave at 40<sup>th</sup> St

Existing



Proposed

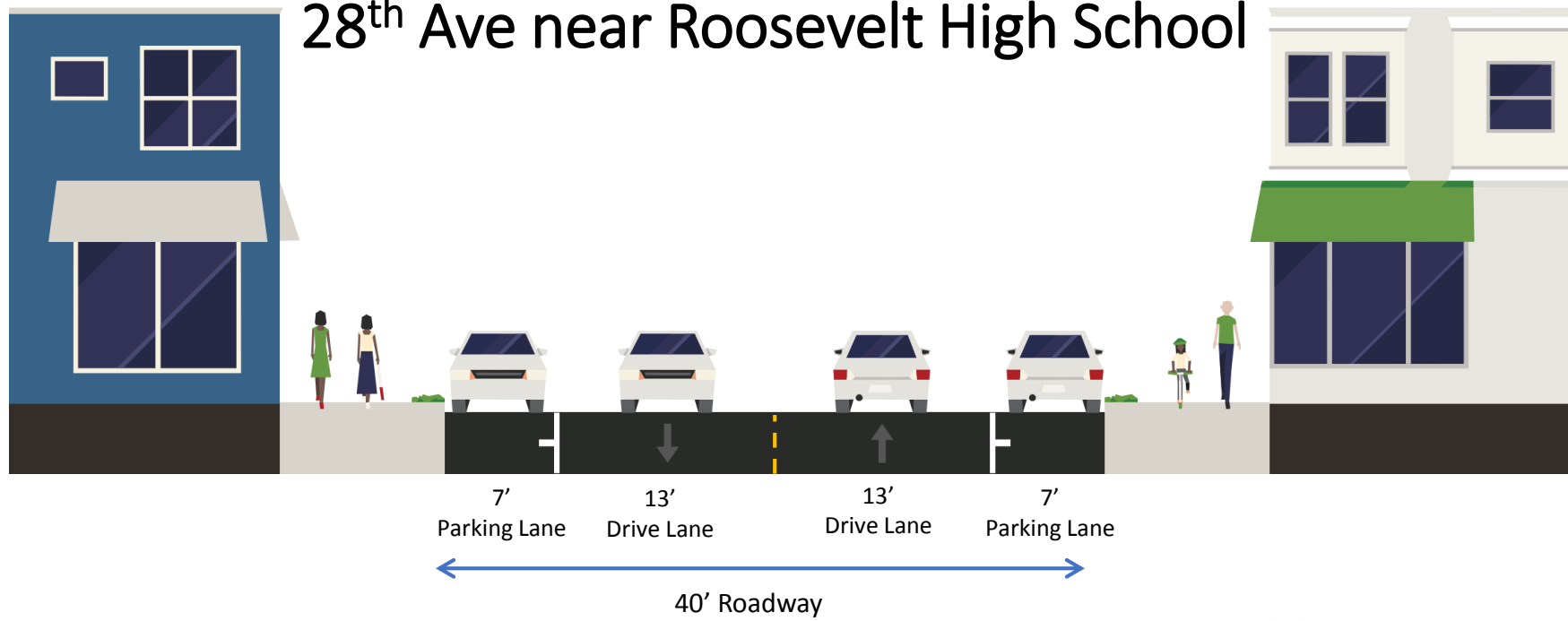


*Exact dimensions of medians are to be determined*

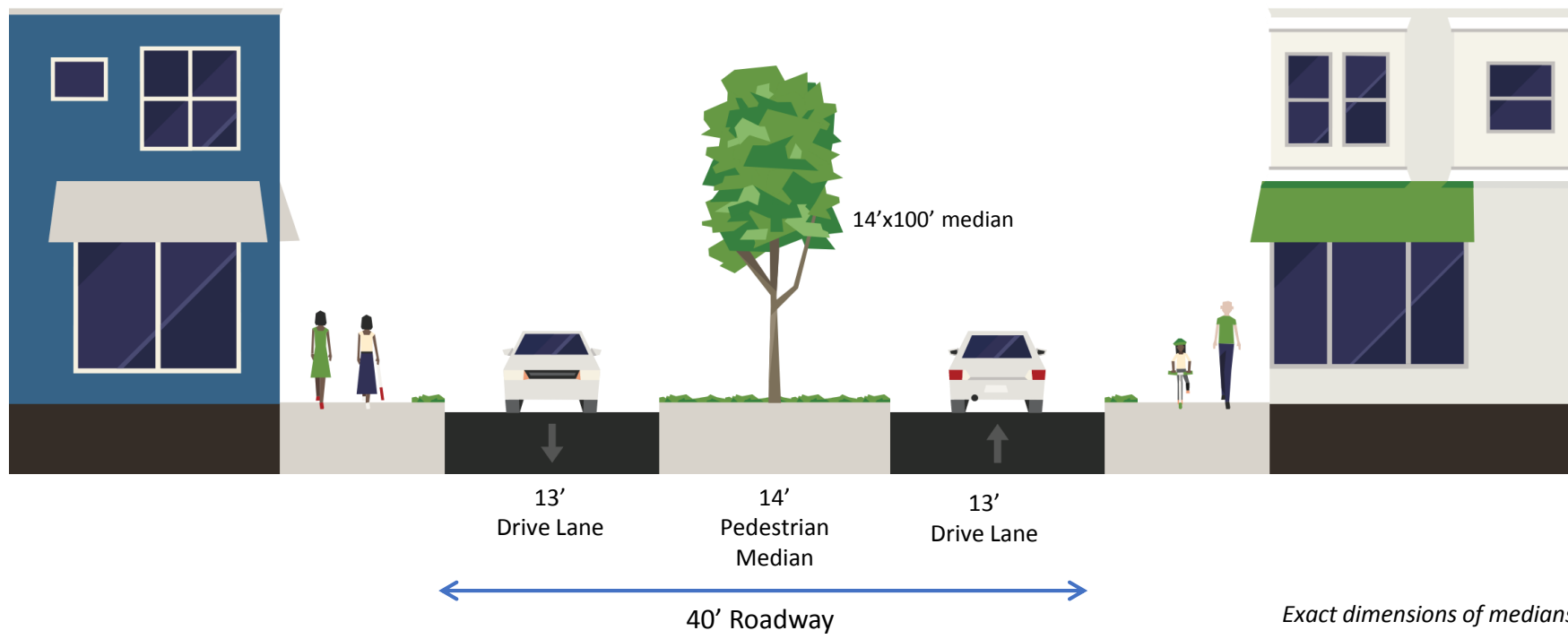


# 28<sup>th</sup> Ave near Roosevelt High School

Existing



Proposed

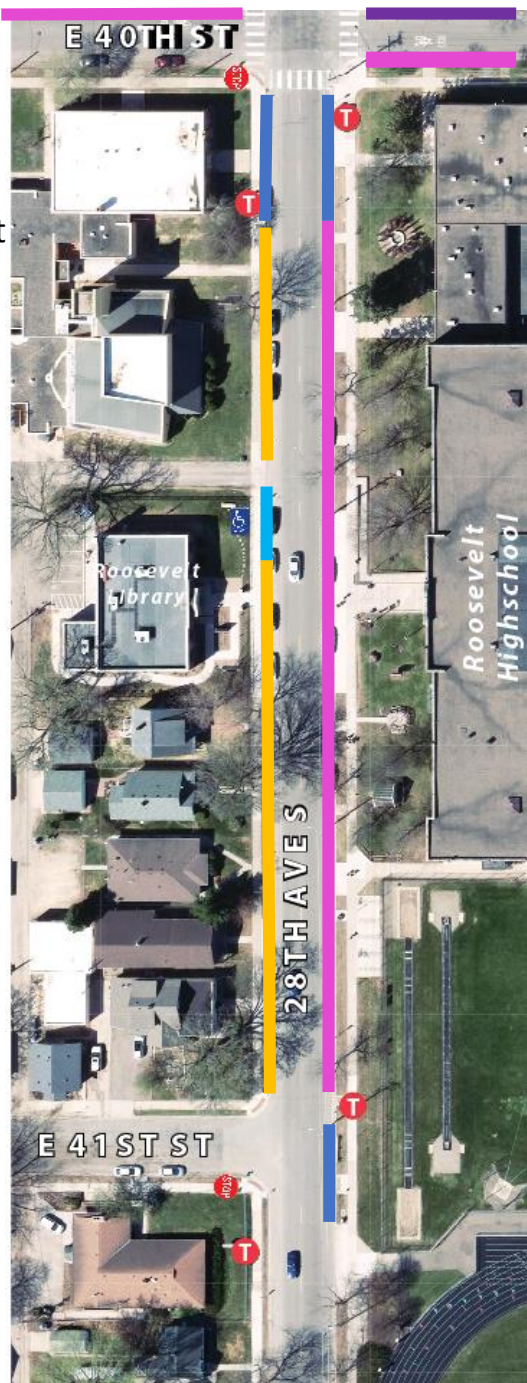


*Exact dimensions of medians are to be determined*



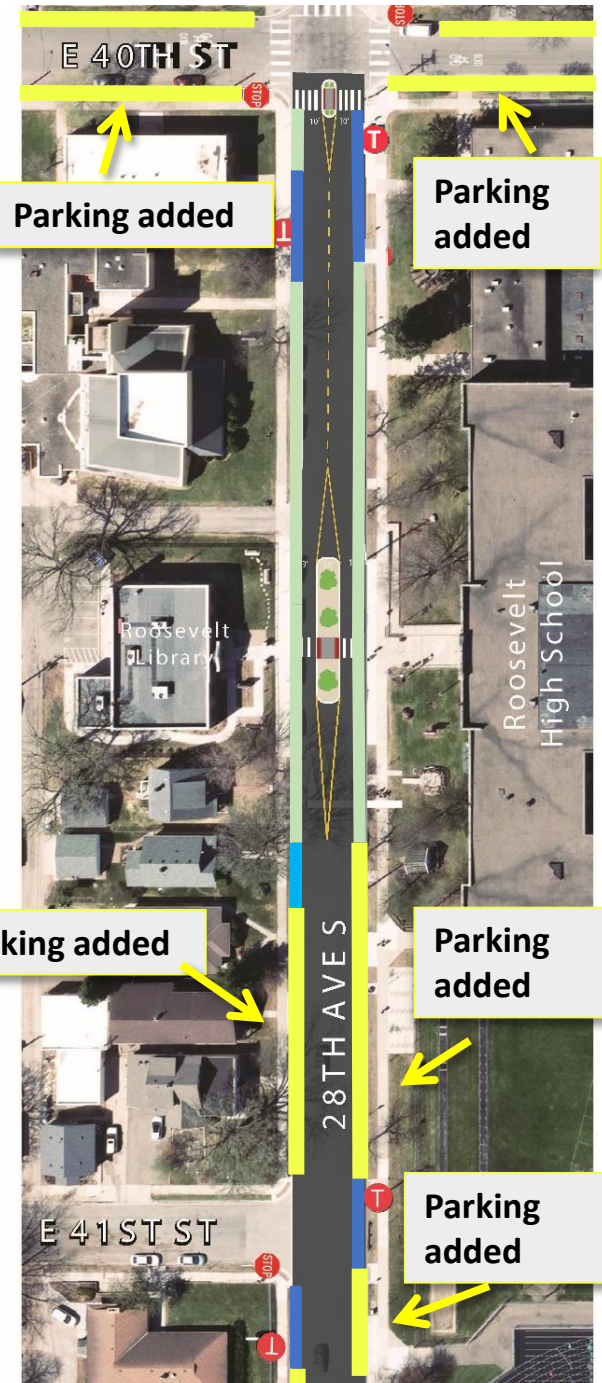
# Existing Parking

- █ Bus Stop No Parking
- █ 1 Hour Parking 8am-6pm Mon-Sat
- █ No Parking 8am-4pm School Days
- █ Disability Parking Zone (DPZ)
- █ 2 hour parking 8am-6pm



# Proposed Parking

- █ Bus Stop No Parking
- █ No stopping or parking anytime\*
- █ Disability Parking Zone (DPZ)\*\*
- █ Parking to be added



\*Student pick up and drop off will be moved south of the midblock median on 28<sup>th</sup> Avenue and on 40<sup>th</sup> Street E (see yellow areas in graphic on the right).

\*\*Move Disability Parking Zone approximately 60ft south on 28<sup>th</sup> Avenue



# Project summary

- In summer 2019, safety improvements will be installed on 28th Ave S between 40th St E and 41st St E as part of a Safe Routes to School project focused on Roosevelt High School.
- The proposal includes the construction of two pedestrian median refuge islands on 28th Ave S to create safer, shorter crossings for people walking and calm traffic.
- To construct the medians, some on-street parking will be removed on 28<sup>th</sup> Ave S. Public Works will create new parking areas on 28<sup>th</sup> Avenue south of the proposed medians and on adjacent side streets (40<sup>th</sup> St E).
- Public Works staff worked with Roosevelt High School staff and Roosevelt students in addition to engaging surrounding stakeholders to identify the proposed improvements.