

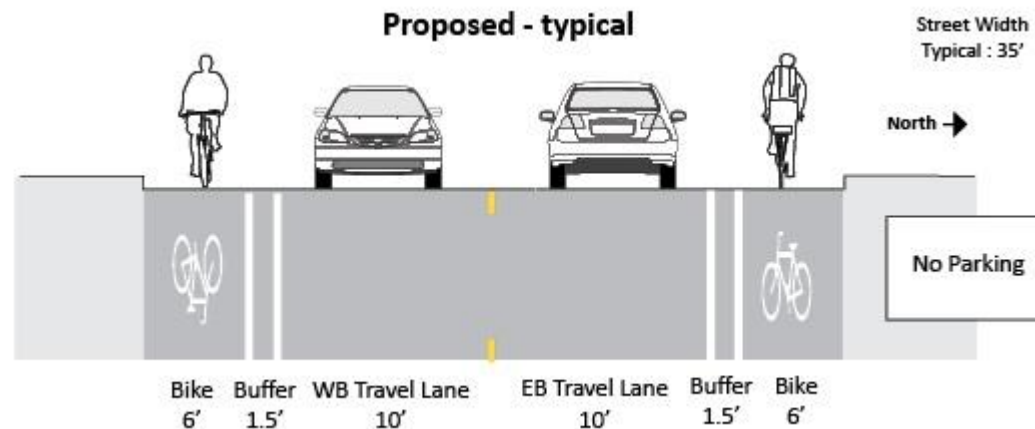
CITY OF MINNEAPOLIS

38th St E Bikeway Proposal

Longfellow Community Council
Neighborhood Meeting
Brackett Park Recreation Center
Project Summary

Proposal So Far

- 2017 resurfacing can include new lane configuration for a planned 38th St bikeway
- Current proposal will remove most parking on the south side of 38th St
- No opportunity to widen the street at this time
- Public engagement is underway, and has already led to layout changes



Why Bike Lanes, Why Here?

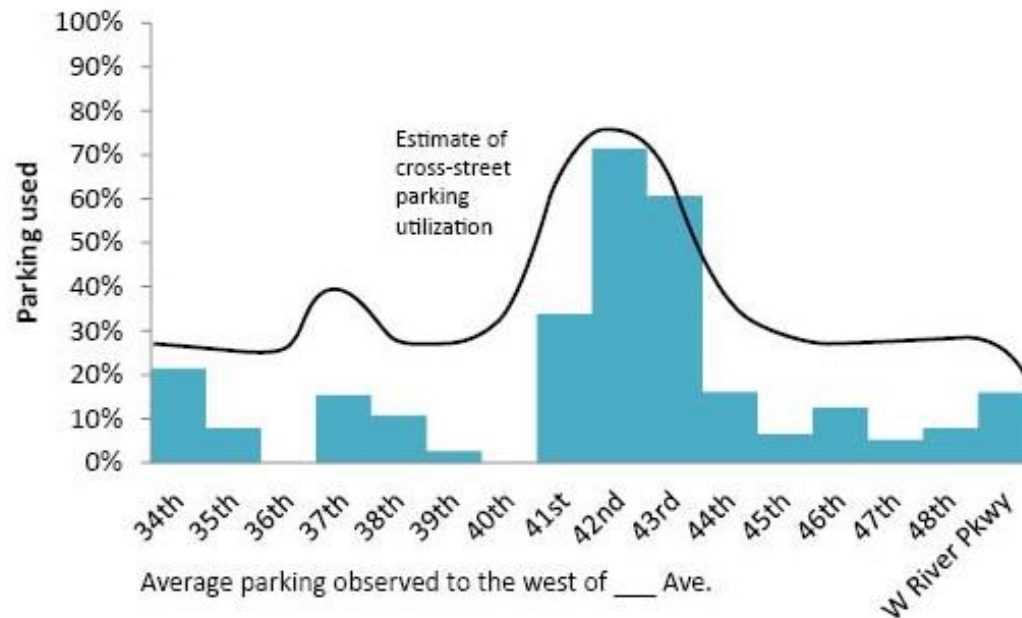
- Complete system for all current and future users
- Is a collector street for autos and bicycles
- Goals in health, safety, sustainability, and environment
- Dedicated bike lanes are the minimum in accomplishing these goals
- 38th St is being resurfaced
- Other routes cannot make the same connections

38th St E Bikeway Striping



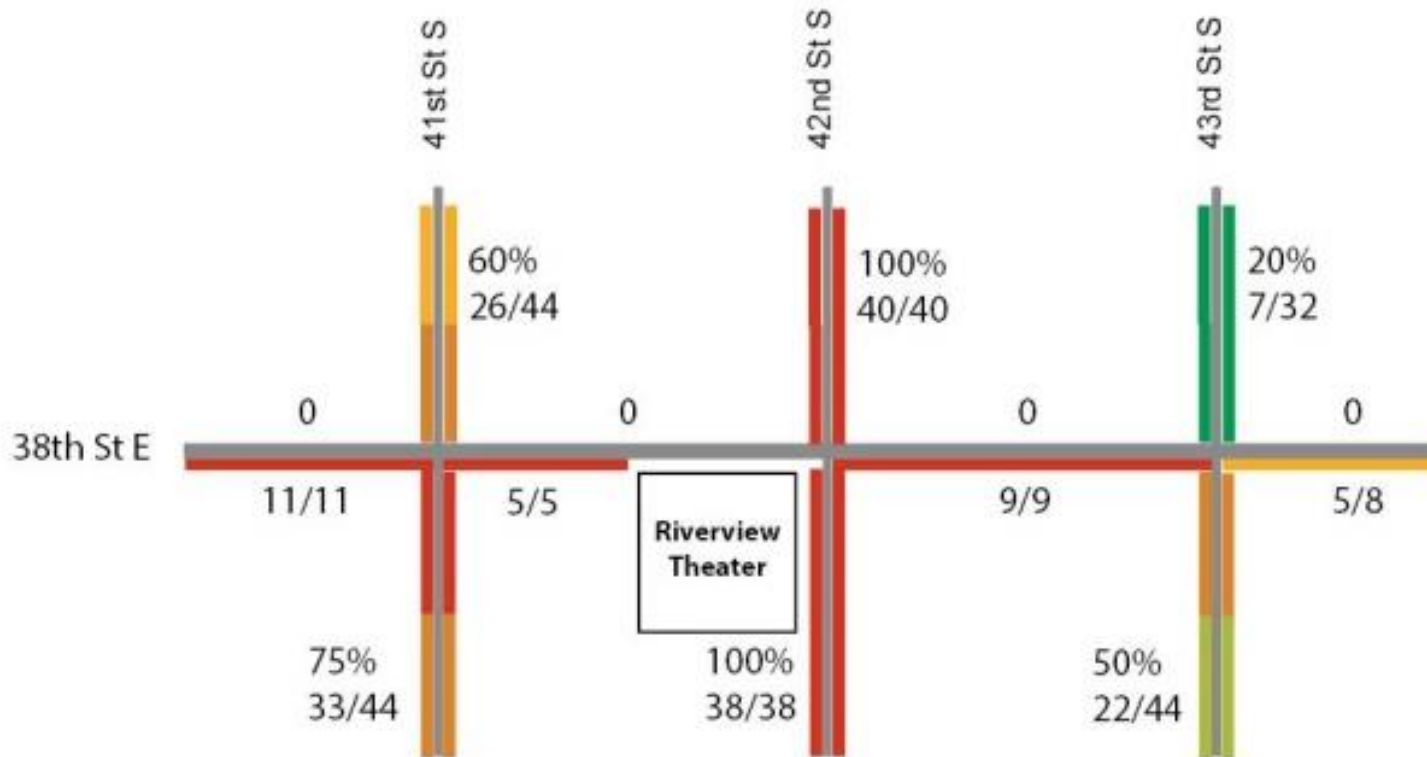
Parking Considerations

1. Businesses that rely on convenience as a selling point need more parking preserved adjacent to their storefront
2. The Riverview Theater creates a heavier demand for parking on many evenings & nights

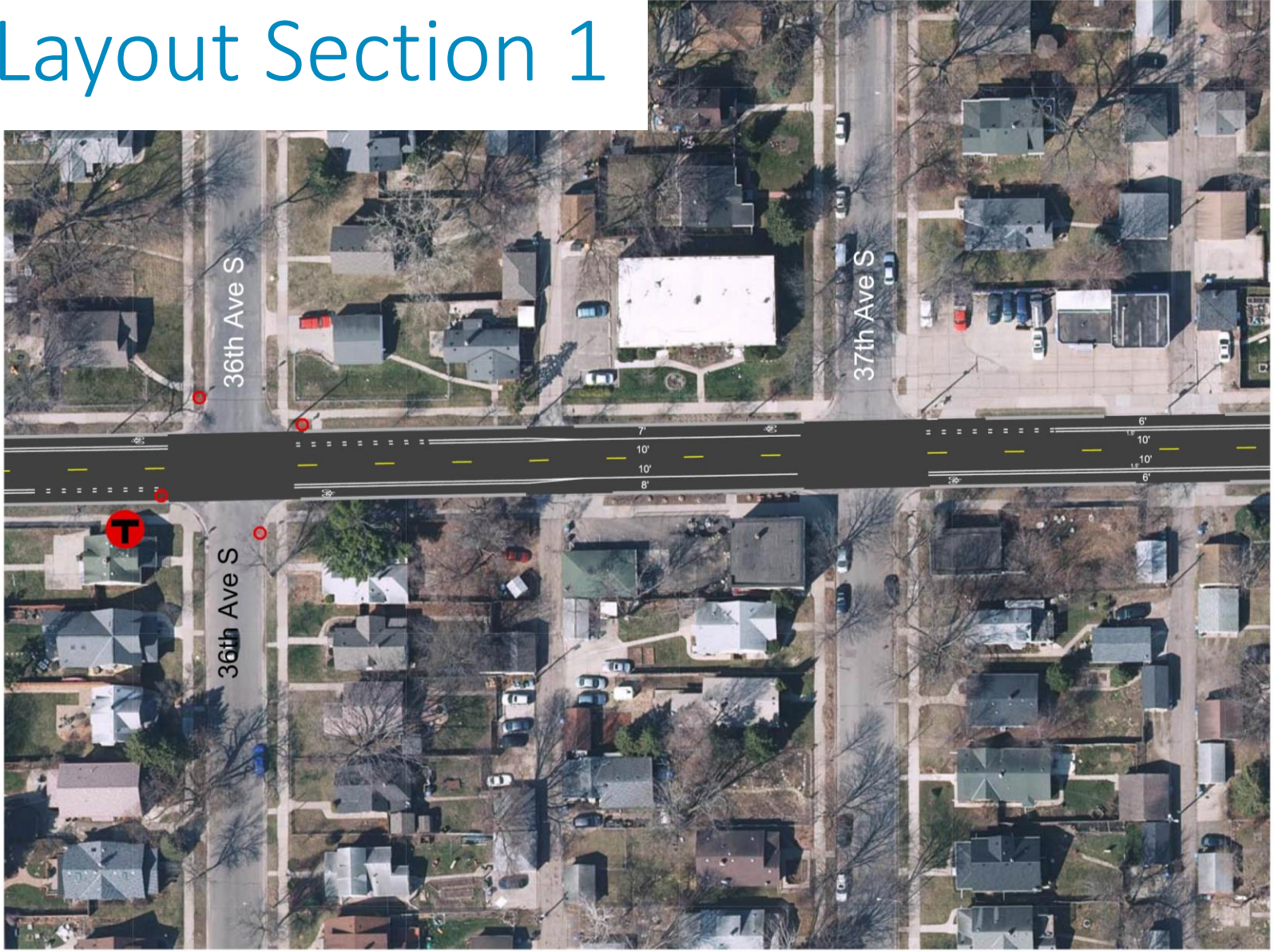


More Parking Considerations

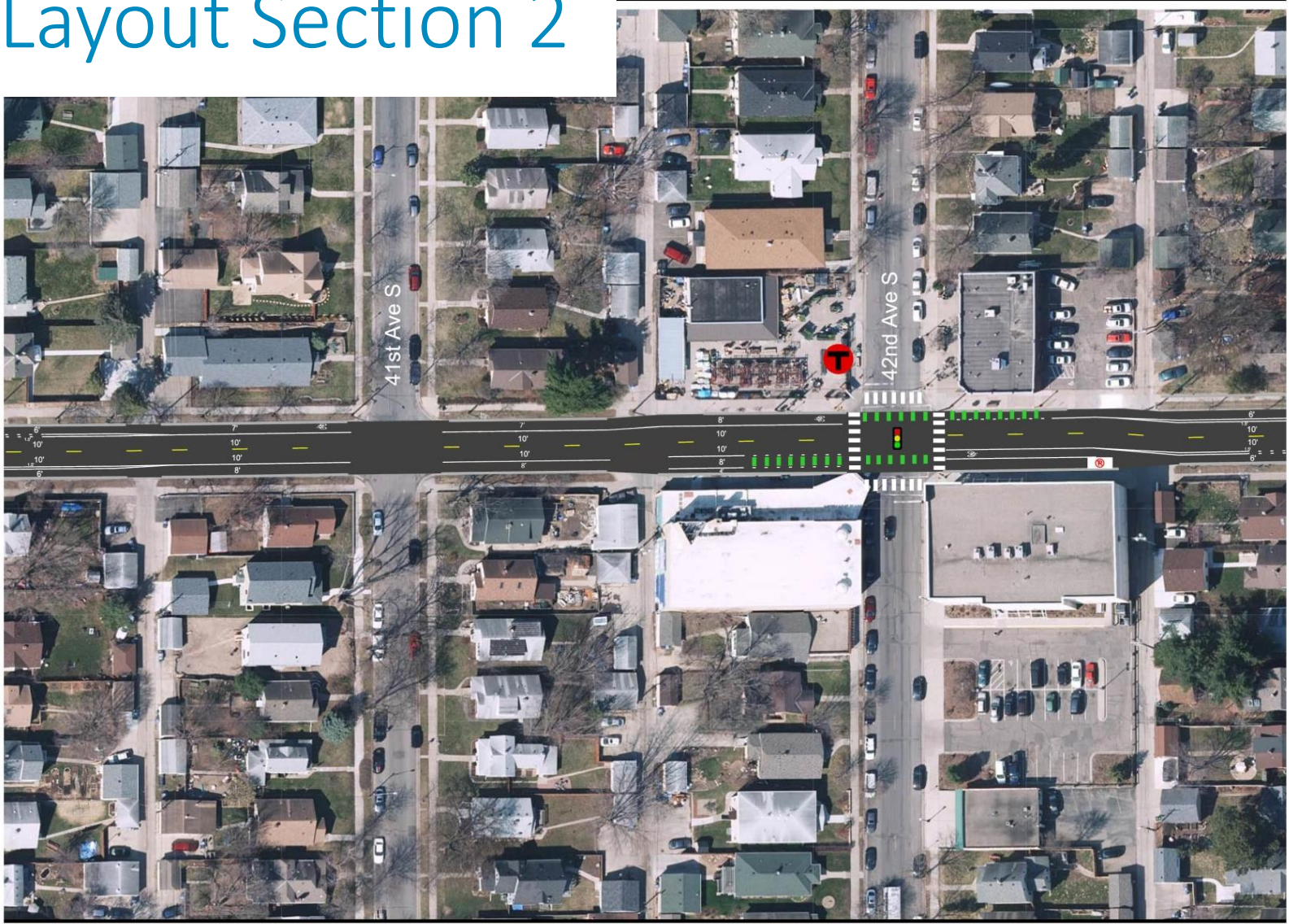
Maximum Parking Observed - 38th Street E at 42nd Ave S
November 25, 2016 @ 8pm



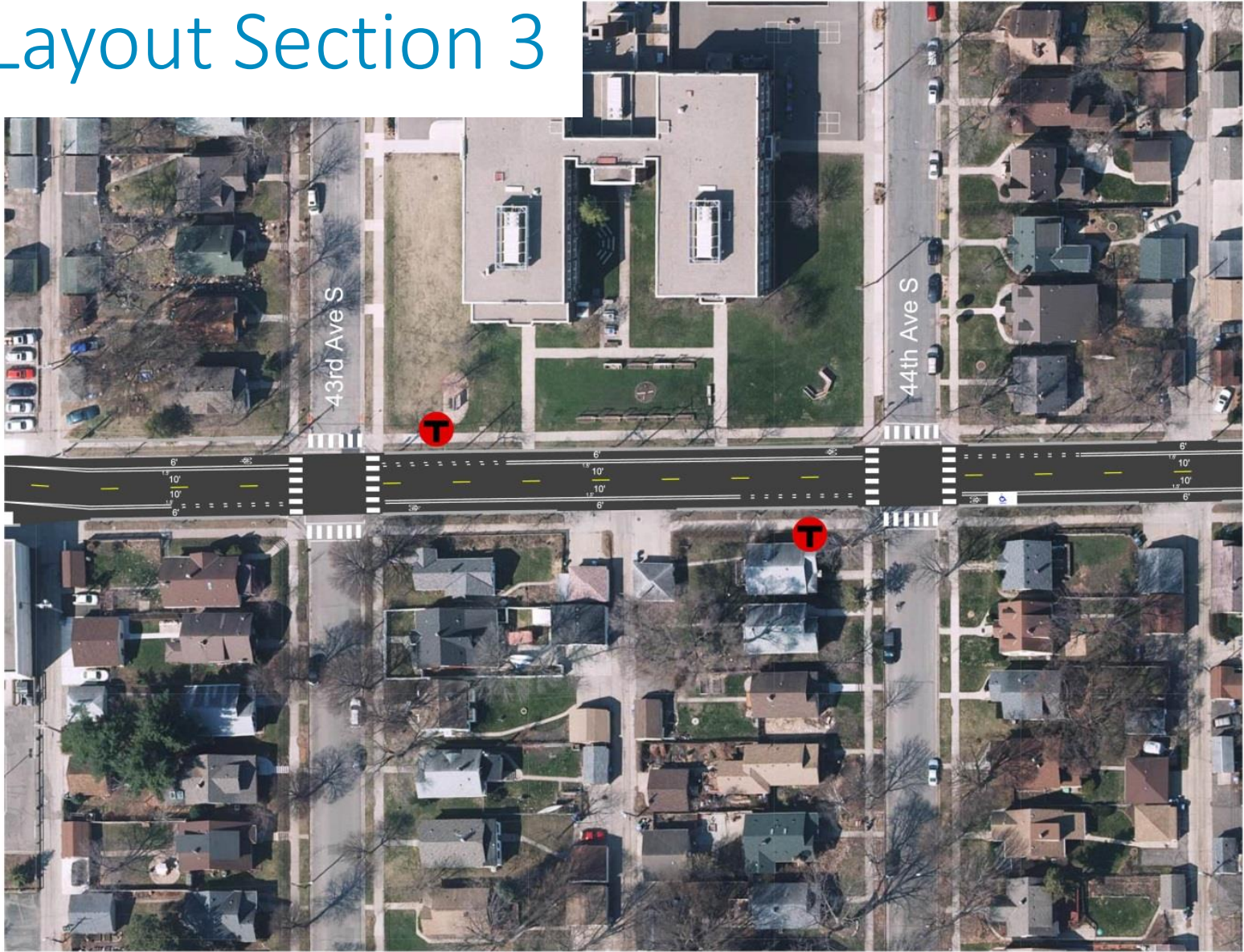
Layout Section 1



Layout Section 2



Layout Section 3



Next Steps

- Determining how 38th St should be part of the bicycle network
- Public Works will make final changes to a layout based on public feedback, ongoing data gathering, and state aid standards
- Public Works and your City Councilmember will make a determination
 - Bikeway compromise layout – more considerations to make
 - No bikeway in layout
- Approval in Feb/Mar, construction in summer 2017