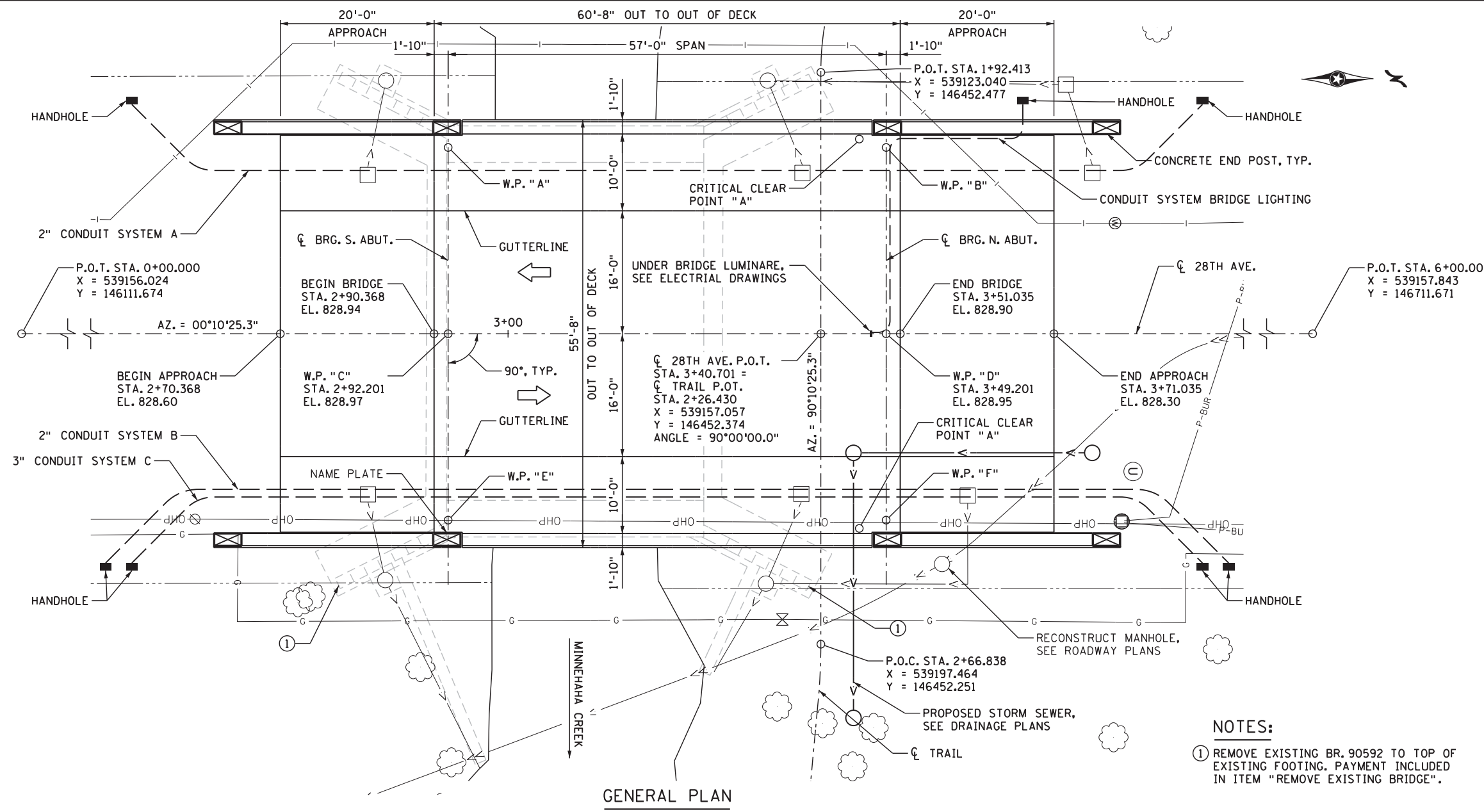


Plotted by: Dan.Streeter at 8:35:37 AM
 Plotted on: 3/18/2019
 File path: \\oneserver.public\PROJECTS\1046-2-Mpls 28th Ave over MC Prelim\2 - Production\C - Work\CD\BR27C59_S12001.dgn



DESIGN DATA

DESIGNED IN ACCORDANCE WITH 2017 AASHTO LRFD BRIDGE DESIGN SPECIFICATIONS.

HL 93 LIVE LOAD

DEAD LOAD INCLUDES 20 p.s.f. ALLOWANCE FOR FUTURE WEARING COURSE MODIFICATIONS.

MATERIAL DESIGN PROPERTIES:
 REINFORCED CONCRETE:
 $f'_c = 4$ k.s.i. CONCRETE
 $f_y = 60$ k.s.i. PLAIN AND EPOXY COATED BARS
 $f_y = 60$ k.s.i. STAINLESS STEEL BARS
 $n = 8$ FOR REINFORCEMENT

PRESTRESSED CONCRETE:
 $f'_c = 7.1$ k.s.i. CONCRETE
 $f_{pu} = 270$ k.s.i. LOW RELAXATION STRANDS
 $n = 1$ FOR PRETENSIONING STRANDS
 0.75 f_{pu} FOR INITIAL PRESTRESS

DECK AREA = 3377 SQ. FT
 7600 AADT FOR YEAR 2038
 DESIGN SPEED:
 OVER = 30 M.P.H.
 HL 93 LRFR
 BRIDGE OPERATING RATING FACTOR RF = 1.75

Olson & Nesvold Engineers, P.S.C.
 8000 West 78th Street, Suite 410
 Edina, MN 55439

I HEREBY CERTIFY THAT THIS PLAN WAS PREPARED BY ME OR UNDER MY DIRECT SUPERVISION AND THAT I AM A DULY LICENSED PROFESSIONAL ENGINEER UNDER THE LAWS OF THE STATE OF MINNESOTA.

Michael D. Speedling LIC. NO. 20760
 PRINTED OR TYPED NAME: MICHAEL D. SPEEDLING DATE: 3/18/2019

LIST OF SHEETS

NO.	DESCRIPTION
B-1	GENERAL PLAN AND ELEVATION
B-2	TRANSVERSE SECTION & SCHEDULE OF QUANTITIES
B-3	WORKING POINT LAYOUT
B-4	MICROPILE DETAILS
B-5 TO B-17	ABUTMENT DETAILS
B-18	FRAMING PLAN
B-19	27" PRESTRESSED CONCRETE BEAM (PRETENSIONED) 27M-59
B-20 TO B-24	DECK DETAILS
B-25 TO B-29	RAILING AND BARRIER DETAILS
B-30 TO B-33	APPROACH PANEL DETAILS
B-34 TO B-36	MISCELLANEOUS DETAILS
B-37	BRIDGE SURVEY
B-38	BRIDGE SURVEY PLAN
B-39	BRIDGE SURVEY PROFILE
B-40	AS-BUILT DATA

BRIDGE NO. 27C59

28TH AVE. OVER MINNEHABA CREEK IN MINNEAPOLIS

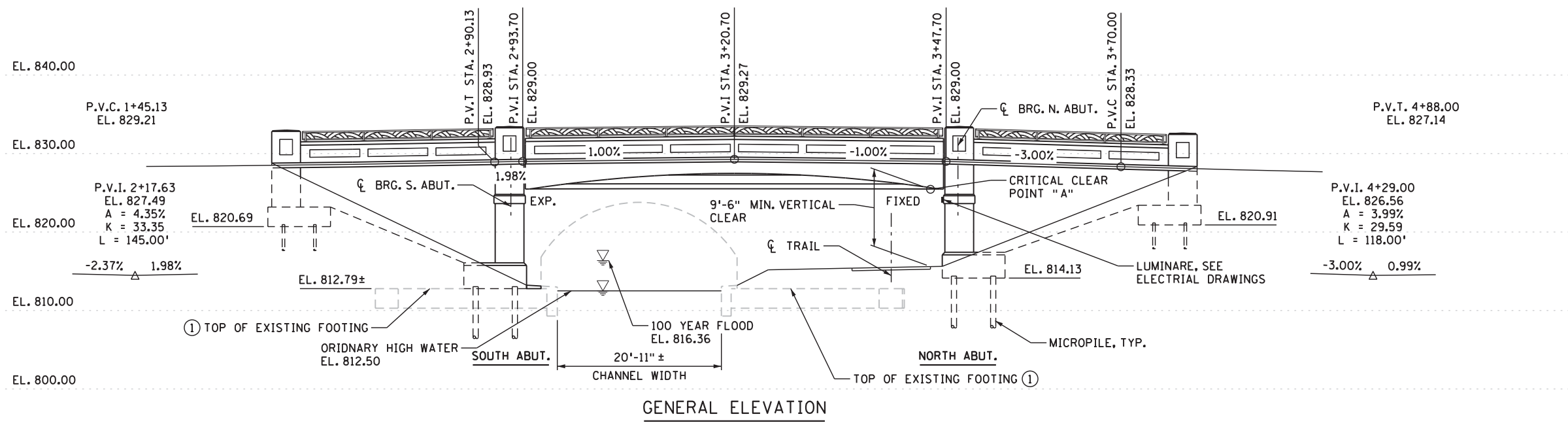
32'-0" RDWY.
 58'-3" 27" PRESTRESSED CONCRETE BEAM TYPE MOD. P-1 BARRIER WITH ORNAMENTAL METAL RAILING 0° SKEW

IDENTIFICATION NO. 501

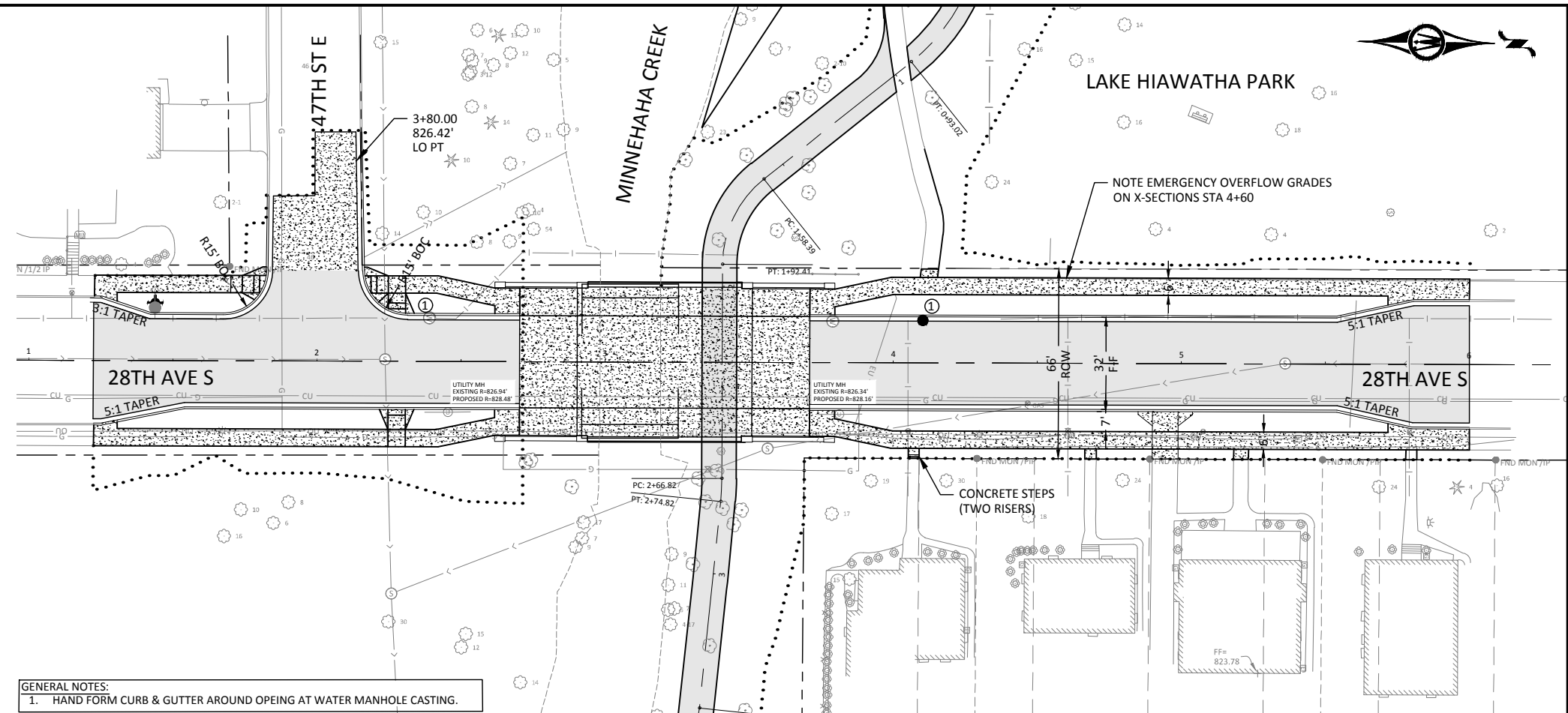
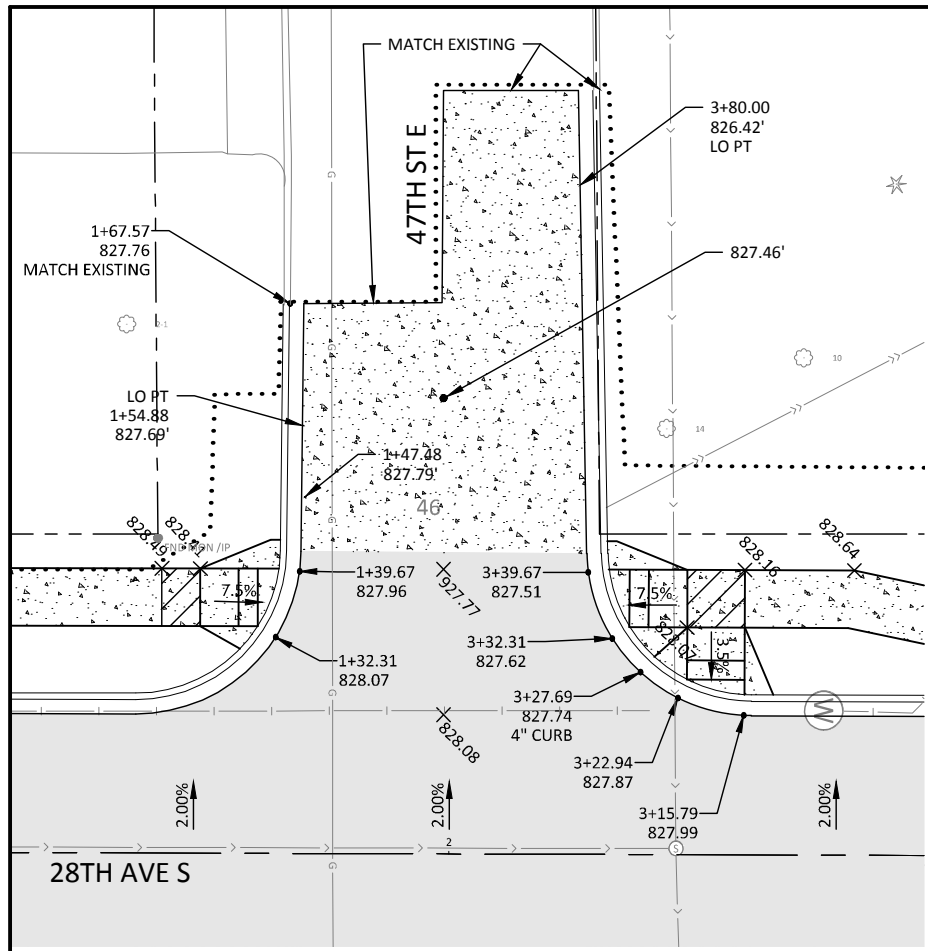
GENERAL PLAN AND ELEVATION

SEC 13 T 28 N R 24 W

CITY OF MINNEAPOLIS HENNEPIN COUNTY

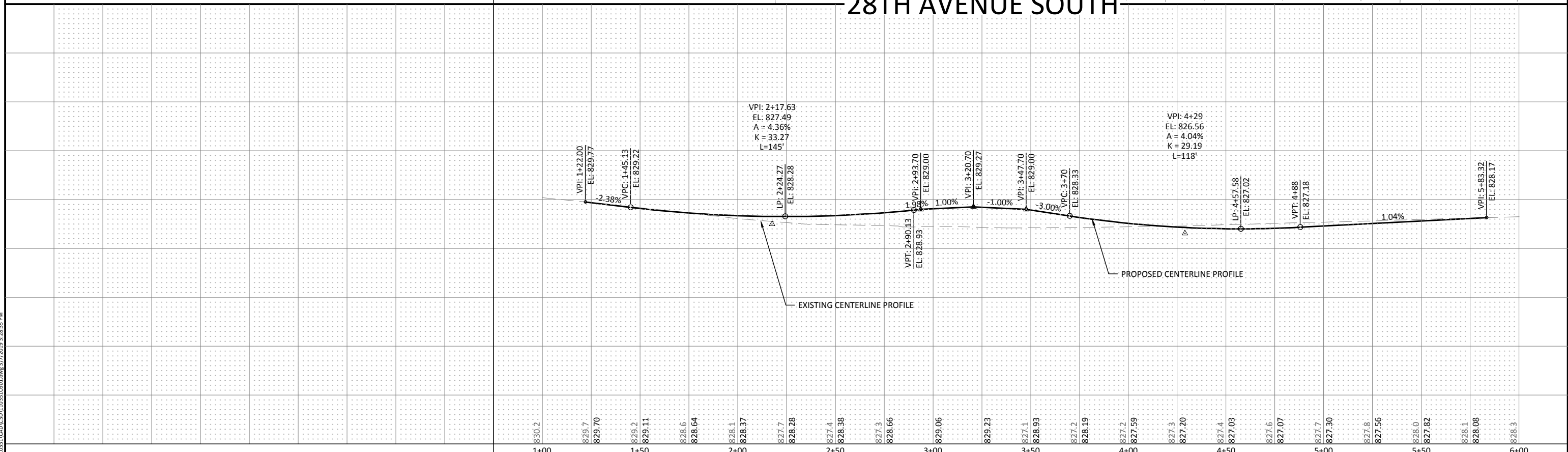


DES: MDS	DR: DPS
CHK: SLN	CHK: MDS

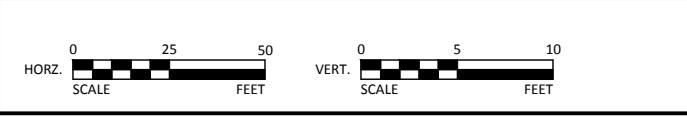


GENERAL NOTES:
 1. HAND FORM CURB & GUTTER AROUND OPEING AT WATER MANHOLE CASTING.

28TH AVENUE SOUTH



© Bolton & Menk, Inc. 2019. All Rights Reserved. G:\3\30815\2019\28th Ave S\28th Ave S.dwg 3/7/2019 2:28:35 PM



I HEREBY CERTIFY THAT THIS PLAN, SPECIFICATION, OR REPORT WAS PREPARED BY ME OR UNDER MY DIRECT SUPERVISION AND THAT I AM A DULY LICENSED PROFESSIONAL ENGINEER IN THE STATE OF MINNESOTA.

John K. Hennig
 UC NO. 20711 DATE 01/11/2019



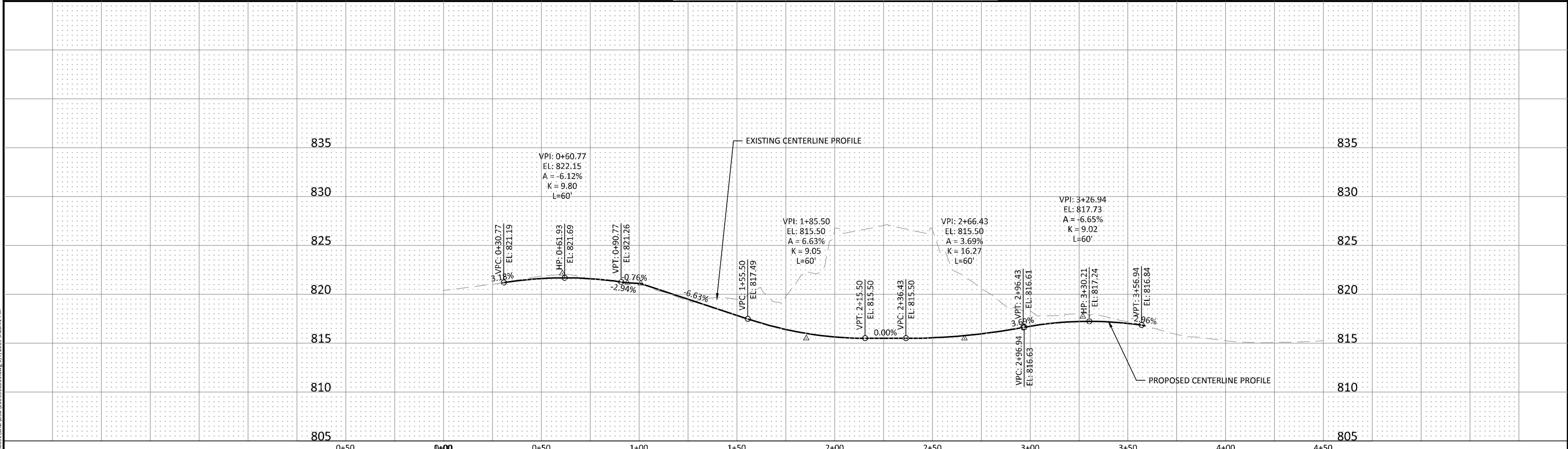
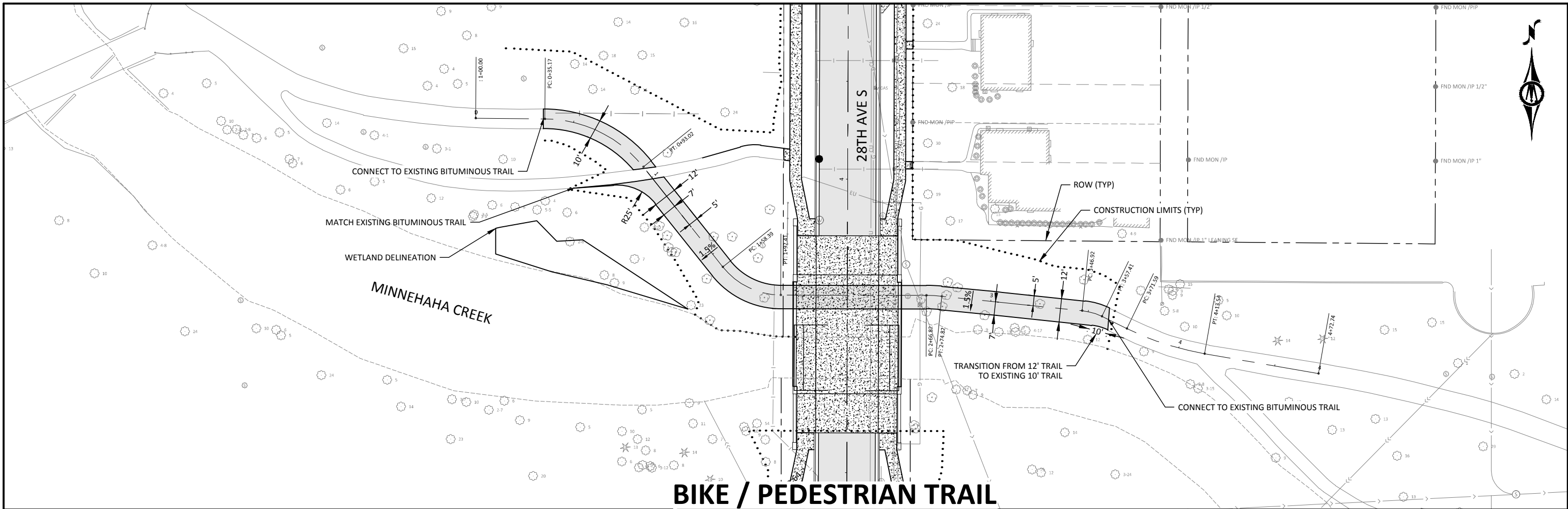
12224 NICOLLET AVENUE
 BURNSVILLE, MINNESOTA 55337
 Phone: (952) 890-0509
 Email: Burnsville@bolton-menk.com
 www.bolton-menk.com



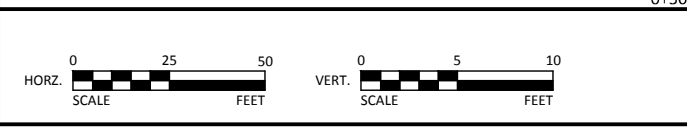
DESIGNED	NO.	REVISION	DATE
RR			
DRAWN			
JLW			
CHECKED			
RR			
CLIENT PROJ. NO.	T11.110351		

CITY OF MINNEAPOLIS, MN
 28TH AVENUE BRIDGE REPLACEMENT AND TRAIL IMPROVEMENTS
 PLAN AND PROFILE

SHEET
C6.01



© Bolton & Menk, Inc. 2019. All Rights Reserved. T:\GIS\GAMES\T11110351\CAD\C6.02\103516601.dwg 3/7/2019 3:28:41 PM



I HEREBY CERTIFY THAT THIS PLAN, SPECIFICATION, OR REPORT WAS PREPARED BY ME OR UNDER MY DIRECT SUPERVISION AND THAT I AM A DULY LICENSED PROFESSIONAL ENGINEER IN THE STATE OF MINNESOTA.

John K. Hennig

UC NO. 20711 DATE 01/11/2019



12224 NICOLLET AVENUE
 BURNSVILLE, MINNESOTA 55337
 Phone: (952) 890-0509
 Email: Burnsville@bolton-menk.com
 www.bolton-menk.com



DESIGNED	NO.	REVISION	DATE
RR			
DRAWN			
JLW			
CHECKED			
RR			
CLIENT PROJ. NO.	T11.110351		

CITY OF MINNEAPOLIS, MN

28TH AVENUE BRIDGE REPLACEMENT AND TRAIL IMPROVEMENTS

PLAN AND PROFILE TRAIL

SHEET
C6.02