

# 26<sup>th</sup> Ave N Reconstruction

(Broadway Ave to Lyndale Ave and  
2<sup>nd</sup> St N to the Mississippi River)



Project Engineer:  
Beverly Warmka  
Construction Engineer  
Stephanie Malmberg  
Construction Inspector  
Menbere Wodajo 1

# Agenda

- Welcome
- Introductions
- Purpose of Meeting
  - Brief overview of project history and process for how we got here
  - Provide information regarding Construction
  - Questions



# General Project Scope

Removal and Replacement of:

- Street Pavement
- Curb and Gutter
- Driveways
- Storm Drain
- Sidewalk
- Bike Path



# Purpose of Project

## Pavement in poor condition



# Design Background

- Neighborhood Planning 2004 & 2009
- Public Meetings in 2014
- Stakeholder Input
  - BAC
  - PAC
  - MPRB





# Layout

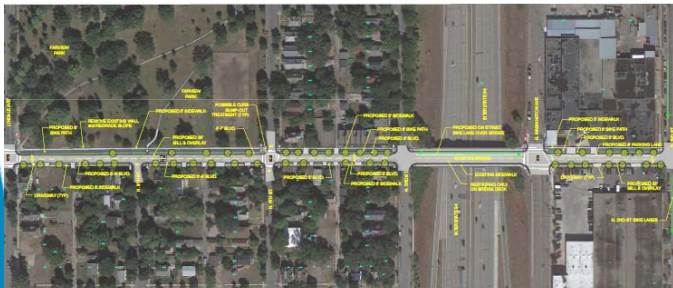
## Parkway to Broadway- Renovation



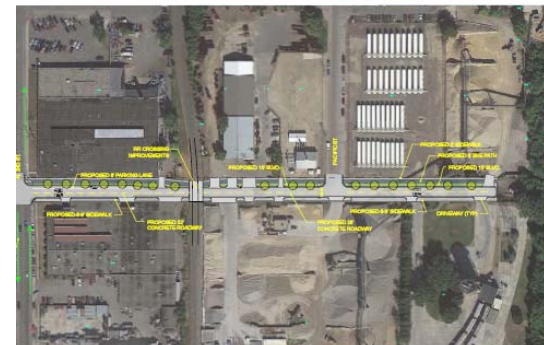
## Broadway to Lyndale- Reconstruction



## Lyndale to 2<sup>nd</sup> St- Renovation

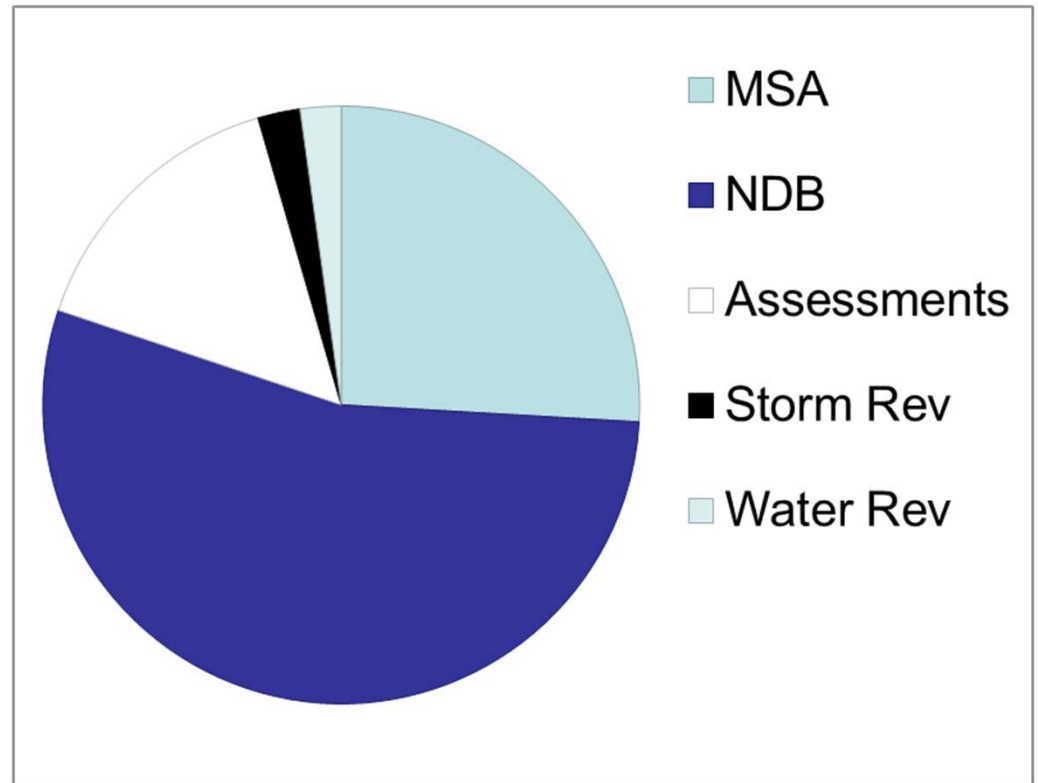


## 2<sup>nd</sup> St N to Mississippi- Reconstruction



# Funding

- \$13,560,000
- Municipal State Aid
- Net Debt Bonds
- Street Assessments
- Storm water Revenue
- Water Revenue



# Assessments

- Influence Area Method
- Uniform Reconstruction Assessment Rate  
2016 Rate (rates set annually)
  - \$2.52 sq. ft non-residential 2016
  - \$0.84 sq. ft residential 2016

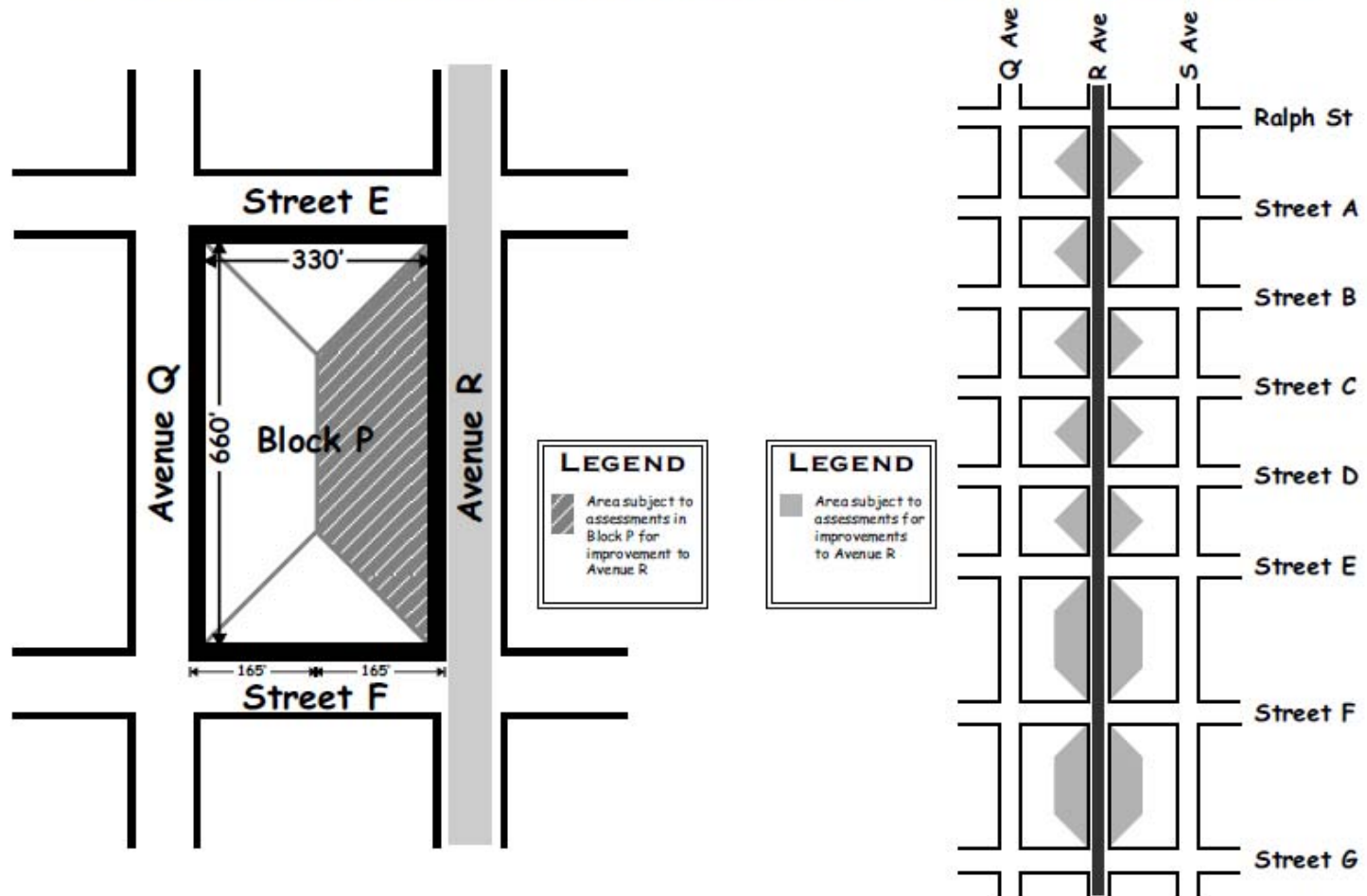




# Influence Area

## DEVELOPMENT OF THE INFLUENCE AREA ASSESSMENT METHOD

MINNEAPOLIS DEPARTMENT OF PUBLIC WORKS



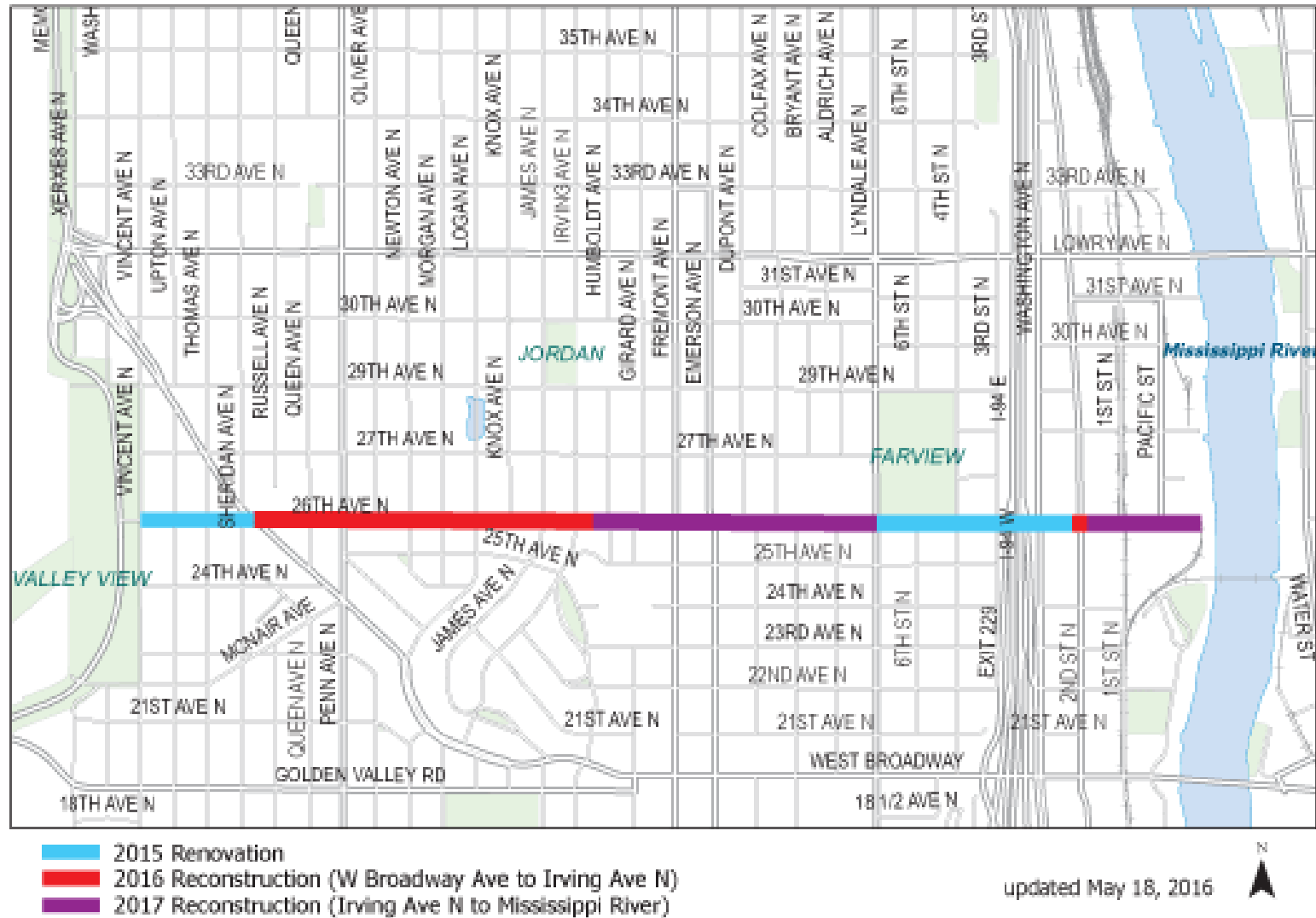
# Project Schedule

- Design Input Meetings- Starting in 2014
- Layout Approval- January 2015
- Assessment Meetings- January/February 2016
- Preconstruction Meeting- May 18, 2016
- Construction 2016 & 2017
  - May 31, 2016 to October 2016
  - April 2017 to October 2017



# Phasing

## 26th Avenue North



# Construction Schedule

- Preliminary
- Subject to change
  - Weather
  - Underground Surprises
- See project website or Facebook page for updates (or sign up for regular email updates)



This map illustrates a proposed transit route through Minneapolis. The route is highlighted with a thick blue line, which turns red in the central urban core. The map shows a grid of streets, including major thoroughfares like I-94 and I-55, and the Mississippi River. Key areas labeled include 'JORDAN' and 'FARVIEW'. The route begins near the airport, travels north-south through the city center, and then turns east towards the riverfront. The map also shows various other streets and landmarks, providing a comprehensive view of the proposed transit system's layout.

- updated May 18, 2016

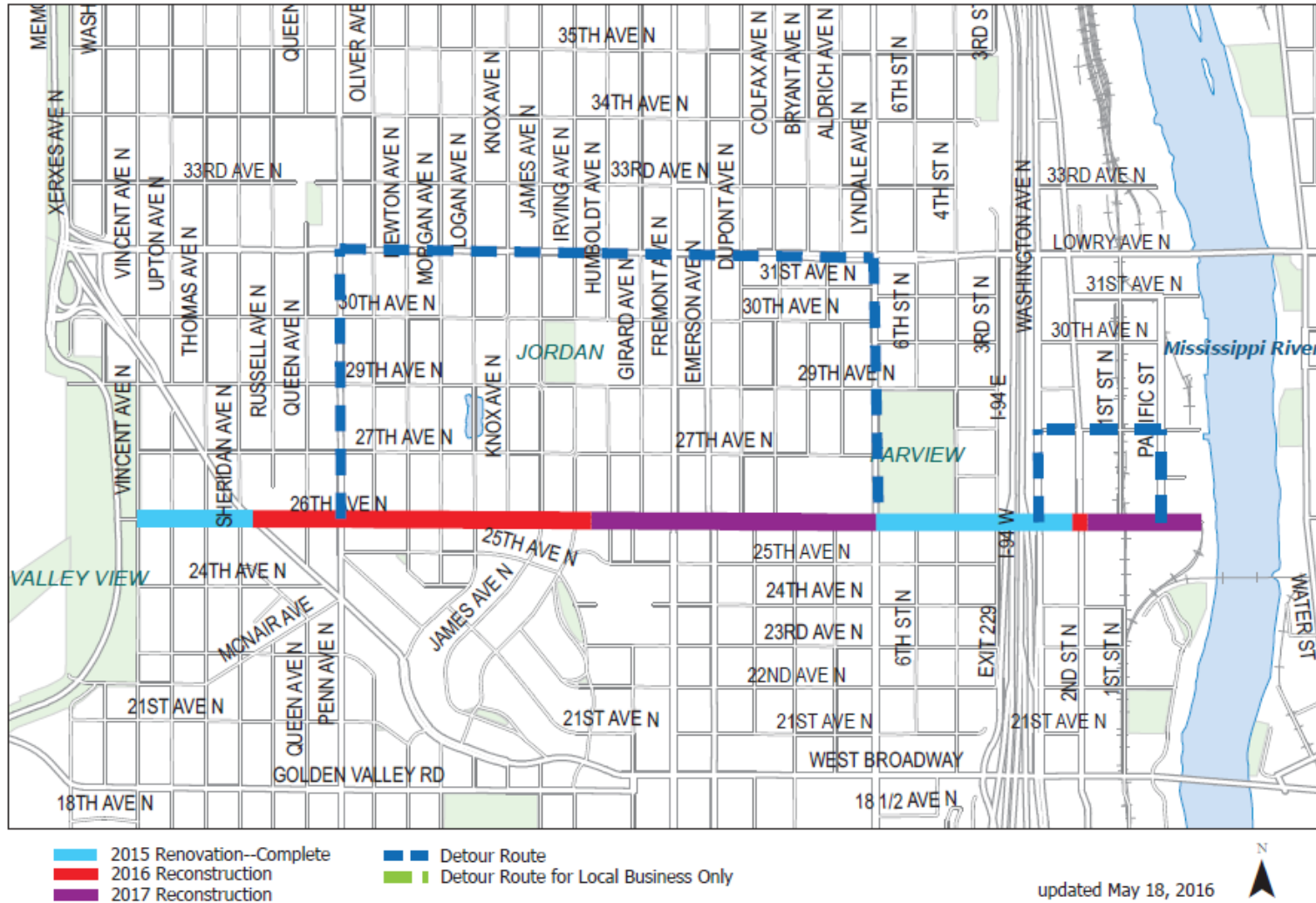




# Detour Phase 2- 2017

## Phase II Detour Route

26th Avenue North (Vincent Ave to Mississippi River)  
2016-2017 (PV073)



# Encroachments

- The City's Right-of-Way extend beyond the back of sidewalk
- We cannot protect your:
  - Sprinkler Systems
  - Decorative Pavers
  - Flowers
  - Other Special Items in the Right-of-Way



# What to expect during construction



# Soil Corrections





# Other Underground Work





# Driveway Ramping



# Forming and Pouring Driveways





# Mainline Construction



# Bike Path Construction Operations



Oct 21, 2015 12:40:54 PM





# Other Information

- Construction Process
  - Order of how the roadway will be built
- 2016 Phasing
  - Broadway to Newton- June to August
  - Newton to Irving- August to October
- 2017 Phasing
  - To be determined





# Thank you for attending!

- Contact Information
  - Menbere Wodajo 612-673-3716
  - [Menbere.wodajo@minneapolisismn.gov](mailto:Menbere.wodajo@minneapolisismn.gov)
  - Stephanie Malmberg 612-673-3365
  - [Stephanie.malmberg@minneapolisismn.gov](mailto:Stephanie.malmberg@minneapolisismn.gov)
  - Beverly Warmka 612-673-3762
  - [Beverly.warmka@minneapolisismn.gov](mailto:Beverly.warmka@minneapolisismn.gov)
- <http://www.ci.minneapolis.mn.us/cip/all/WCMS1P-127156>

