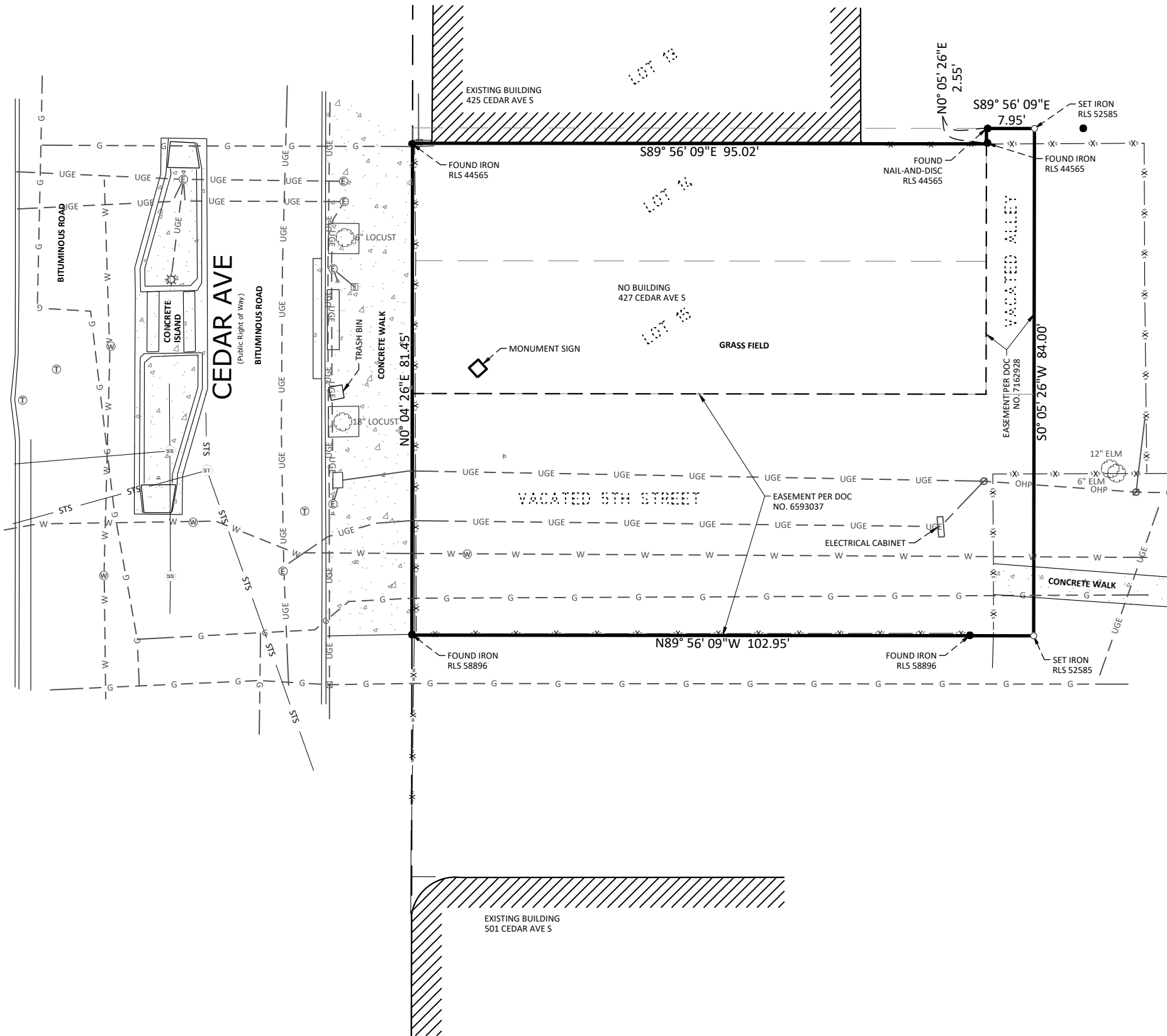
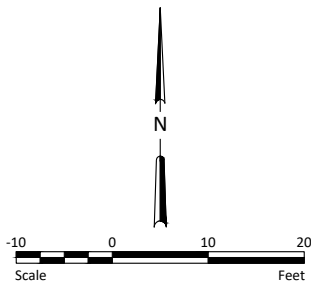


VICINITY MAP



LEGAL DESCRIPTION

Lots 14 and 15, Block 179 "Meldal and Sunde's Subdivision of Block 179", Town of Minneapolis, according to the recorded plat thereof, and situate in Hennepin County, Minnesota.

Together with that part of vacated 5th Street accruing to said Lot 15, and that part of the vacated alley accruing to said Lots 14 and 15.

EXCEPTING THEREFROM

The North 2.55 feet of Lot 14, Meldal and Sunde's Subdivision of Block 179, Town of Minneapolis, according to the recorded plat thereof, Hennepin County, Minnesota.

PREPARED FOR:

LISA PASSUS
CITY OF MINNEAPOLIS
COMMUNITY PLANNING AND ECONOMIC DEVELOPMENT
505 4TH AVENUE SOUTH, SUITE 320
MINNEAPOLIS, MN 55415

MINNESOTA CERTIFICATION:

I hereby certify that this survey, plan, or report was prepared by me or under my direct supervision, and that I am a duly Licensed Land Surveyor under the laws of the State of Minnesota.

Daniel F. Corey

Daniel F. Corey
Minnesota RLS No. 52585

6-17-2025

Date

LEGEND

	CURB AND GUTTER
	CONCRETE
	WOOD FENCE
	CHAIN-LINK FENCE
	STEEL FENCE
	OHP
	UGE
	LANDSCAPING EDGE
	SS
	STS
	G
	W
	IRON MONUMENT FOUND
	1/2" PIPE SET
	SANITARY MANHOLE
	STORM MANHOLE
	SIGN
	TELEPHONE MANHOLE
	WATER MANHOLE
	ELECTRIC MANHOLE
	WATER VALVE
	PUSH-TO-WALK