

# **The Bryn Mawr Neighborhood**

## **Neighborhood Revitalization Program**

### **Phase I Progress Report**



**April 2005**

**Bryn Mawr Neighborhood Association  
404 Thomas Avenue South  
Minneapolis, MN 55405**

## TABLE OF CONTENTS

*“Over the years Bryn Mawr is still a great place to live and be proud of. People are free to talk to each other – and live their private lives.”*

*“Events make community. Parks and natural areas are the key to making it a unique neighborhood.”*

*“Organize a summer neighborhood festival / block party at Bryn Mawr Meadows – live music, cookout, name tags and a chance to meet – nothing all that lavish – just an offering of some food, free entertainment and some neighborly love... I’ll help organize ... Thanks!”*

*“Our Bryn Mawr NRP has made good choices. Keep up the good work.”*

*“Keep it a safe place to live.”*

*“Would like to see a community center built.”*

*Diversity? “It’s really white here.”*

*“We need affordable housing not tacky lamp posts!”*

<b>INTRODUCTION, PURPOSE, AND ACKNOWLEDGEMENTS .....</b>	<b>1</b>
<b>SUMMARY .....</b>	<b>1</b>
<b>RICHNESS OF COMMUNITY—MAINTAIN AND ENHANCE QUALITY AND DIVERSITY OF HOUSING STOCK</b>	<b>2</b>
1.1.1 Housing Fair .....	2
1.1.2 Housing Information/Referral Program .....	3
1.1.3 Housing Improvement Program .....	3
<b>RICHNESS OF COMMUNITY—PRESENT BRYN MAWR AS A UNITED NEIGHBORHOOD .....</b>	<b>5</b>
2.1.1 Entry signage.....	5
2.2.1 Bryn Mawr Residents plant many community landscapes .....	6
2.1.3 Bryn Mawr Neighborhood Association - BMNA.....	9
2.1.3 Maintain the historic boundaries of Bryn Mawr.....	10
2.1.4 Develop and maintain a neighborhood directory & website.....	11
<b>RETAIL SETTING—PROVIDE AND MAINTAIN AN ATTRACTIVE RETAIL CENTER.....</b>	<b>12</b>
3.1.1 Bryn Mawr Neighborhood Business Association (BMNBA) incorporated in 1999.....	12
3.2.1 Beautify Downtown Bryn Mawr.....	15
3.2.1 Streetscaping Construction in Downtown Bryn Mawr .....	18
3.2.2 Matching Grant Program.....	20
<b>NEIGHBORHOOD WITHIN A PARK: DEVELOP AND ENHANCE THE BASSETT CREEK VALLEY.....</b>	<b>22</b>
4.1.1 Improve Bassett’s Creek Park.....	23
4.1.2 Improve Bassett’s Creek Park.....	24
Blowout repairs/Bassett’s Creek Bank and Falls Restoration Project (completed October 2001): .....	24
4.1.4 Luce Line/Bassett Creek Bike Trail.....	24
4.1.3 & 4.1.5 Bassett Creek Valley Restoration .....	25
<b>NEIGHBORHOOD WITHIN A PARK—FACILITATE NEEDED IMPROVEMENTS AT BRYN MAWR MEADOWS .....</b>	<b>29</b>
5.1.4 Tree Planting at Bryn Mawr Meadows.....	29
<b>PLANNED REMEDY FOR CLEAR CUT IN BASSETT’S CREEK PARK .....</b>	<b>30</b>
<b>NEIGHBORHOOD WITHIN A PARK: MAKE NEEDED IMPROVEMENTS TO THE CEDAR LAKE AND BROWNIE LAKE AREA .....</b>	<b>30</b>
2005 BUCKTHORN BUSTING AT BROWNIE LAKE PLANNED.....	31
<b>SAFETY—RESPOND TO CONCERNS FOR PERSONAL AND COMMUNITY SAFETY.....</b>	<b>31</b>

BRYN MAWR NEIGHBORHOOD: NEIGHBORHOOD REVITALIZATION PROGRAM -- PHASE 1 PROGRESS

<b>SCHOOLS—ESTABLISH EDUCATION AS FOUNDATION AND DEFINE NEIGHBORHOOD SCHOOLS AS GEOGRAPHICAL AND EDUCATIONAL CENTER OF BRYN MAWR.....</b>	<b>32</b>
8.1.1    Anwatin Middle School Improvements .....	32
8.1.1    Bryn Mawr Elementary School Improvements.....	32
<b>TRAFFIC—PROVIDE EXCELLENT MULTI-MODAL TRANSPORTATION AND FACILITIES TO ENSURE SAFETY, LIVABILITY AND VITALITY OF NEIGHBORHOOD.....</b>	<b>33</b>
9.1.1/9.2.1    Neighborhood Traffic Plan/Traffic Calming Plan.....	33
9.4.2    I-394 Expansion addressed; sound wall added.....	35
<b>OTHER MASTER PLANNING EFFORTS.....</b>	<b>36</b>
<b>ALLEY PAVED BETWEEN THOMAS AND UPTON AVENUE SOUTH; FIRST STEP/EARLY ACCESS NRP.....</b>	<b>37</b>
<b>ANOTHER PARTNERSHIP WITH NEARBY HARRISON NEIGHBORHOOD: MAY 15, 2004 ARBOR DAY CELEBRATION IN HARRISON.....</b>	<b>38</b>
<b>NRP TRANSITION FUNDS PURCHASE EWING AVENUE WETLAND SITE IN 1994 .....</b>	<b>38</b>
<b>CONCLUSION .....</b>	<b>38</b>
<b>APENDICES (NEIGHBORHOOD MAP, SURVEY SUMMARY, NRP SPREADSHEET .....</b>	<b>39</b>

*“Our neighborhood is full of people who walk which is a very good thing. Neighbors get to know each other... They observe each other’s homes, notice improvements, are inspired to make improvements of their own, spot problems, prevent crime. To encourage walking and to make the area as civilized as possible, I would like to see continuous public sidewalks on all residential public streets.”*

*“Many of the programs and projects are the result of naïve and overly precious expectation. It would be better if our resources were spent on improving and maintaining the basic quality of our neighborhood and the discouragement of anti-social incursions.”*

*“Look ahead to retirement and the need to downsize and find a place to live with less upkeep and maintenance, we worry that the housing options in Bryn Mawr will mean we’ll have to leave this neighborhood that we love so much. I would hope more modestly priced condo or townhouse type housing can be added to our area, so that people at all stages of life can stay here and enjoy the roots they’ve put down.”*

*“All / any funds should only be spent on “capital” improvements or other “tangible” assets – better lighting, housing, gardens, trails – not this “touchy-feely” good neighbor crap.”*

***Opinion of Neighborhood Revitalization Program?:***

*“I don’t know enough about it. But I understand the intention is to ‘make things better’. Thank you.”*

*“Has to do with how much I am paying attention – No fault of BMNA.”*

*“It seems a few things I know a lot about and some almost nothing.”*

*“Just recently became aware. Visited web site.”*

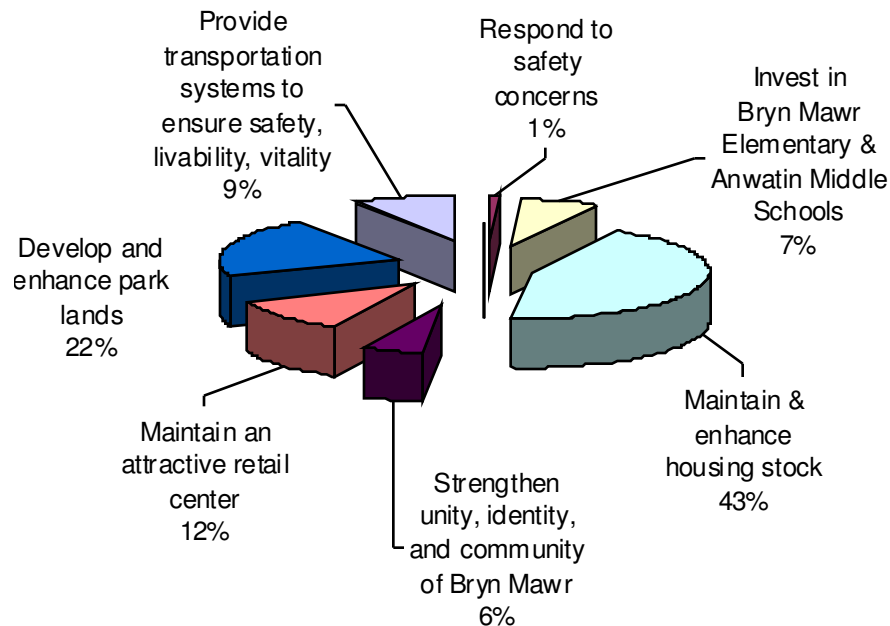
*“I am new to Bryn Mawr (60 days). Much of what is known as NRP is unknown to me. I like what I have seen and heard of BMNA. You should be pleased that someone so new to Bryn Mawr knows “so much”.*

*“I’ve been in Bryn Mawr 45 years, and love it. I hope I live long enough to enjoy more.”*

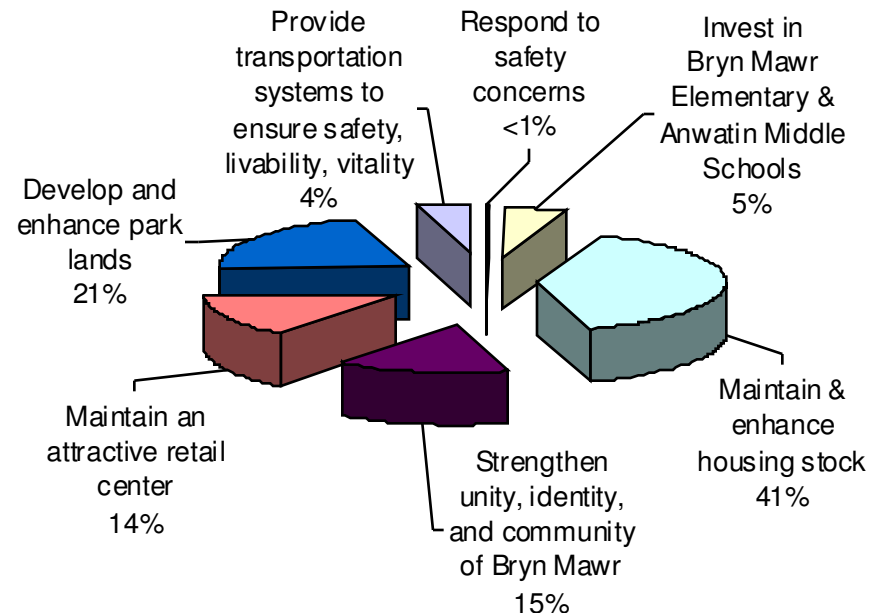
*“Thank you for your efforts to make Bryn Mawr the very livable neighborhood it is.”  
“I love this neighborhood and thank all the people who have helped make it so vibrant and welcoming. I wish I had more time to volunteer and appreciate those who put in so many hours.”*

*“Keep it up with what you are trying to achieve.”*

**BRYN MAWR NEIGHBORHOOD  
REVITALIZATION PROGRAM PHASE I:  
PLANNED DISTRIBUTION OF  
EXPENDITURES OF OUR \$713,000  
PHASE I ALLOTMENT**



**BRYN MAWR NEIGHBORHOOD  
REVITALIZATION PROGRAM PHASE I:  
ACTUAL DISTRIBUTION OF  
EXPENDITURES OF OUR \$713,000  
PHASE I ALLOTMENT**



*"Thanks to all the volunteers and involved people who make this such a vibrant neighborhood"*

*– Comment from neighborhood survey.*

Quotations posted in the report originate from the Phase I Neighborhood Revitalization Survey conducted November 2004-January 2005. The range of opinions is represented by these comments reflects the range of viewpoints of our independently minded residents.

### **Introduction, Purpose, and Acknowledgements**

In December 1997, after several years of facilitating meetings, discussions, and focus groups, Bryn Mawr Neighborhood Association (BMNA) completed its Comprehensive Plan and a Neighborhood Action Plan – a list of projects that it would invest its time, energy, and its NRP funds towards accomplishing. We are happy to report that over 90% of the projects, via the funds allocated and leveraged, have either been completed or have been contracted for completion. This report provides a “snapshot” of these accomplishments, program shortcomings, and suggestions for improvements. Through the words, pictures, and tables, BMNA strives to acknowledge the generous contribution of neighbors, non-profit and profit corporations, as well as the employees of the City of Minneapolis, Hennepin County and the State of Minnesota.

Over the years hundreds of neighbors have invested thousands of hours of time and sweat to make this one of the most desirable, safe and beautiful neighborhoods in the Twin Cities. The list of accomplishments is not complete – the list contains some (though not all) of the more recent accomplishments.

This review is a thank you to all the volunteers who gave of themselves to better the neighborhood for all. The review is also a plea to neighbors to step forward and volunteer. With your help so much more can be achieved. Finally, the review is an acknowledgement of the service performed by all the Neighborhood Association members since its inception in 1976 and the foresight of the founding members of the Bryn Mawr Neighborhood Association.

### **Summary**

The Bryn Mawr Neighborhood chose to focus its improvements within seven themes: housing, community/unity/identity, retail setting, parks, safety, schools, and traffic/transportation. For those desiring further information, we suggest a reference to the Bryn Mawr Neighborhood Comprehensive Plan, available at [www.bmna.org](http://www.bmna.org); or the Bryn Mawr Neighborhood Action Plan, available at [www.nrp.org](http://www.nrp.org). The three digit numbers, separated by periods (e.g. 1.1.1) refer to the specific Action Plan item to be discussed. On page 40, following the narrative section of this report, a summary of our survey and an NRP spreadsheet recalls details of Action Plan items.

Both the Bryn Mawr Neighborhood and the State of Minnesota, through its NRP program mandate, deemed housing to be the highest priority for neighborhood investment: 41% of Phase I resources funded a needs-test based housing improvement program and the



UNIQUE CURVING STREETS







TREE-LINED STREETS,  
DOWNTOWN MPLS. VIEWS

## BRYN MAWR NEIGHBORHOOD: NEIGHBORHOOD REVITALIZATION PROGRAM -- PHASE I PROGRESS

dissemination of housing improvement information. Park improvements, such as trail construction and parks restorations comprised the next largest area of investment: 21%. This comes as no surprise, for the neighborhood is surrounded by 650 acres of parkland and additional open space. Neighbors highly regard and guard the natural environment surrounding them. Neighbors who have moved away remark missing the parkland that is so easily accessible. A mix of efforts to strengthen the unity, identity and community of Bryn Mawr comprised the third largest amount of Phase I funds and efforts: 15%. These efforts produced neighborhood gateway signage, neighborhood directories and a website. A total of 14% of funding supported the efforts of local commercial property owners with streetscaping projects, commercial improvement matching grants, and the formation of the Bryn Mawr Neighborhood Business Association to revitalize a formerly tired-looking, though successful neighborhood commercial node. School investments, including funding of a computer center and a kitchen for use by both the school and the community totaled 5% of expenditures. Traffic/transportation review, monitoring, and planning amounted to 4% of total funding. Responding to safety concerns comprised less than 1%. Using funds distributed throughout the above allocations (comprising 10% of total Phase I NRP funding) and matching these funds (75% NRP funds to 25% BMNA funds), BMNA contacts to provide a part-time neighborhood organizer (initially, Margaret Anderson Kelliher and now Vida Ditter), who concentrates significant time and energy towards strengthening the identity, unity, and community of Bryn Mawr Neighborhood. From \$713,000 in NRP Funding, Bryn Mawr Neighborhood leveraged \$400,000 to \$425,000 from the variety of sources described herein. We hope to be as successful in planning and implementing the \$270,080 allocated to the neighborhood in Phase II.

### **Richness of Community—Maintain and enhance quality and diversity of housing stock**

#### **1.1.1 Housing Fair**

Gather and disseminate information of available housing improvement funds and resources.

#### STRATEGY FUNDS ALLOCATED:

Housing Loan/Grant Program	\$5,000
----------------------------	---------

LEVERAGED FUNDS:	\$ 0
------------------	------

TOTAL PROJECT FUNDS:	\$5,000
----------------------	---------

EXPENDITURES:	\$5,000
---------------	---------

IMPLEMENTING ORGANIZATION/PARTNERS:	Center for Energy and Environment
-------------------------------------	-----------------------------------

MEASURABLE OUTCOMES:

HIGHLIGHTS:



LANDSCAPED FRONT YARDS

### 1.1.2 Housing Information/Referral Program

Direct financial and housing improvements counseling to individuals needing assistance.

#### STRATEGY FUNDS ALLOCATED:

Housing Loan/Grant Program \$5,000

LEVERAGED FUNDS: \$ 0

TOTAL PROJECT FUNDS: \$5,000

EXPENDITURES: \$5,000

IMPLEMENTING ORGANIZATION/PARTNERS: Center for Energy and Environment

MEASURABLE OUTCOMES:

HIGHLIGHTS:

### 1.1.3 Housing Improvement Program

The Bryn Mawr Housing Loan / Grant Programs have benefited residents who otherwise would not have been able to remain in their homes due to deferred maintenance costs. From 1995-2000, three funding rounds of this needs-based housing program were offered to residents. Resulting home improvements have included upgrades or repairs to home electrical, plumbing, heating, roofing, and structural systems. Thus far, Bryn Mawr NRP housing funding totaling \$247,410 has provided over 70 matching grants or deferred loans. The program was administered by Center for Energy and Environment (CEE). This program guaranteed anonymity; the housing pictured in this report do not purport to picture houses benefiting from the improvement program, but rather illustrate the character of some of the neighborhood housing.

#### STRATEGY FUNDS ALLOCATED:

Housing Loan/Grant Program \$297,000

LEVERAGED FUNDS: \$ unknown amt. from homeowners

TOTAL PROJECT FUNDS: \$291,508

EXPENDITURES: \$247,410

IMPLEMENTING ORGANIZATION/PARTNERS: Center for Energy and Environment

MEASURABLE OUTCOMES: Number of loans/grants provided: 70

HIGHLIGHTS:

- **1995-1996** First round of the Home Improvement Program focused on code violations and exterior repairs



LATE 1800'S AND EARLY  
1900'S HOMES ADD  
HISTORIC CHARACTER





## BRYN MAWR NEIGHBORHOOD: NEIGHBORHOOD REVITALIZATION PROGRAM -- PHASE 1 PROGRESS

- **1998-1999** Second round of the Home Improvement Program focused on exterior and interior repairs.
- **2000** Third round of the Home Improvement Program repeated the efforts of round 2 with the remaining funds in Housing NRP dollars.

**All three rounds were preceded by extensive publicity in the Bugle and in public meetings.**

**Bryn Mawr contracted with Center for Energy and Environment to manage the Home Improvement Program.** Their expert building inspectors determined the work to be done, prioritized work to be done and costs allocated with each repair, evaluated the bids received by Bryn Mawr residents receiving NRP housing funds, and inspected the work upon completion.

Here's a quick recap of the Bryn Mawr Home Improvement Program :

45 Matching Deferred Loans	= \$153,954.50
26 Grants	= \$93,815.50

Here is a breakdown of what Bryn Mawr homeowners used their deferred loans and grants for:

27 roofs	1 misc. interior project
7 windows/doors replacement projects	9 sidewalks/front steps
4 heating systems	4 garages
4 misc. exterior projects	4 insulation upgrades
2 landscaping (drainage)	3 electrical upgrades
1 driveway	2 siding projects
	1 plumbing upgrade

Beyond NRP-funded loans/grants, CEE originated additional loans in Bryn Mawr:

17 low-interest loans for homeowners	= \$126,270.00
4 low-interest loans for owners of rental properties	= \$ 51,615.00

HOMES SELL FAIRLY QUICKLY

*Provide "a remodeler's showcase"*

*"more funds for moderate income homeowners"*

*"I favor grant and loan programs."*

*"I for one could use some help."*

*"Provide continuous sidewalks in residential areas."*

*Affordable housing?*

*"always a good idea... where?"*

*"... by maintaining rentals – not*

*more. Not low income housing.*

*It's important to take care of properties."*

*"help renters with downpayment"*

*"Kenwood neighborhood doesn't have affordable housing & neither should we. Help the people already here."*

*"Many houses suffer from water..."*



## **Richness of Community—Present Bryn Mawr as a united neighborhood**

### **2.1.1 Entry signage**

**Neighborhood Signage installed in fall, 2001.** From its birth as a cereal box with paper triangles and circles attached, the Bryn Mawr signs evolved. Two creative neighborhood volunteers designed the final street sign that the City's Public Works Department mounted at every entrance into the neighborhood. The copper and brushed aluminum signs can be seen at Cedar Lake Parkway at the neighborhood's southern border; Cedar Shore Drive at Bryn Mawr's southern border, Drew Avenue South at our western border; Ewing Avenue South at our western border; South Frontage Road near the Target Building; 394 Off ramp from East I-394; Off ramp from I-394 West; Cedar Lake North at the Creek (our northern border); Penn Avenue at the northern border; Vincent Avenue North and Washburn Avenue North and Xerxes Avenue North all at Glenwood. The sign heads were manufactured by one neighborhood business, Accent Signage, and the sign were mounted on poles manufactured and finishing touches applied by another Bryn Mawr Business, Bloomsbury Market, Inc.

STRATEGY FUNDS ALLOCATED:

\$18,000

LEVERAGED FUNDS:

Volunteers Kathy Ripke and Pat Waddick designed signage

TOTAL PROJECT FUNDS:

\$18,000

EXPENDITURES:

\$14,485.82, with \$3,514.18 remaining to be used to improve existing signage

IMPLEMENTING ORGANIZATION/PARTNERS:

Local businesses manufactured Signage; Public Works Department installed signage

MEASURABLE OUTCOMES:

20 new signs fabricated;  
17 or 18 installed

HIGHLIGHTS:

There are still a few details regarding this project that need to be completed for the School Parks Recreation and Community Committee. Neighborhood signage remains to be planted on the various trails into Bryn Mawr. Coordination between MPRB and the City of Minneapolis Public Works, rather than the small cost, \$150-\$200 for installation, is the stumbling block.

*"Nurture the seven areas as one community"*

*"Area 1 is often not included."*

*"Include Area 2."*



NEIGHBORHOOD ENTRY SIGNAGE: FOREGROUND MATERIAL IS SOLID COPPER, BACKGROUND MATERIAL IS SOLID ALUMINUM

*"Looks good."*

*Basic design is pleasing but they do not stand out*

*visually...pretty but hard to see"*

*"They aren't big enough."*



2000 VIEW OF SIGNAGE HEDGE;  
VOLUNTEERS PREPARED  
HILLSIDE AND PLANTED HEDGE



WINTER 2002



SUMMER 2003

## BRYN MAWR NEIGHBORHOOD: NEIGHBORHOOD REVITALIZATION PROGRAM -- PHASE 1 PROGRESS

Secondly, an estimate and mockups are being assembled to add a large oval 1/4" thick satin finish aluminum or stainless steel frame made to surround the Bryn Mawr signs (3-4" wider than the existing sign in each direction on the back side of the sign pole) – to make them more visible, and to paint the finials an accent color (copper or silver). One or two of the remaining poles may be installed in the downtown Bryn Mawr area – see discussions elsewhere in this report.

### 2.2.1 BRYN MAWR RESIDENTS PLANT MANY COMMUNITY LANDSCAPES

Bryn Mawr Neighbors have implemented many action plans of the Bryn Mawr Neighborhood Revitalization Program using NRP Funding approved by the School Park Recreation and Community Committee and the Downtown Bryn Mawr Committee; but also funding from a variety of other sources.

STRATEGY FUNDS ALLOCATED:  
LEVERAGED FUNDS:

\$0  
\$ 3,000 to 5,000 for signage hedge  
\$ 30,000 to 40,000 for medians  
\$ 2,000 + 1,000? CCP/SAFE  
\$ 36,000 to 48,000  
\$ 36,000 to 48,000; incl.\$1,000 NRP  
Volunteers Kathy Ripke and  
Steve Jensen envisioned design;  
MN/DOT Community Landscape  
Partnerships; City of Minneapolis  
Public Works Department, Bridge  
Repair Division  
Hedge, median plantings completed

TOTAL PROJECT FUNDS:

EXPENDITURES:

IMPLEMENTING ORGANIZATION/PARTNERS:

MEASURABLE OUTCOMES:

HIGHLIGHTS:

### Gateway Signage, Perennial Border and Landscaped Medians Penn Avenue and I-394, north and south of the highway

When Bryn Mawr was formed as a neighborhood at the turn of the last century, it was unified geographically. Since then, the neighborhood has been physically but not emotionally divided by the building of Highway 12 and its upgrade to I-394.

*"Love the hedge!" "Looks wonderful!" "Thanks to whomever (Steve Jensen) is maintaining the hedge."*

## BRYN MAWR NEIGHBORHOOD: NEIGHBORHOOD REVITALIZATION PROGRAM -- PHASE 1 PROGRESS

Inspired by a neighbor shoveling out the letters “BRYN MAWR” from a snow-covered hillside, the Bryn Mawr Neighborhood Association (BMNA) and its Neighborhood Revitalization Committee (NRP) envisioned planting a welcome sign at the neighborhood’s entrance from I-394, west of downtown Minneapolis. In 2000, neighbors planted the Alpine Currant hedge, Vinca ground cover; and a 100 foot long perennial border with marigolds in front, alpine currant shrubs in back, and a repeating pattern of 25 different small, medium, and tall perennials in between. Again in 2001, neighbors planted 1,100 drought-resistant perennials such as Stella D’Oro daylilies, sedum, yucca, grasses, yarrow, artemesia, purple coneflower, and prickly pear cactus in the roadway medians at the I-394 highway exit/entrance to our neighborhood at Penn Avenue South. Daffodils were planted both years. Community Landscape Partnerships between our neighborhood, the Minnesota Department of Transportation, and the City of Minneapolis Public Works Department/Bridge Maintenance Division made these projects possible. Block Connections Grants, funded by the Community Crime Prevention Division of the Minneapolis Police Department, provided additional monies. BMNA voted to spend NRP and other grant monies to further identify and unify the neighborhood by locating custom signage at each entry to the neighborhood. Following is a timeline of completed projects:

Fall 1999 – Neighbors remove turf by hand and rototill the planting area for the future “BRYN MAWR” hedge. With composted manure, they also amend the soil.

Saturday, May 20, 2000 – Alpine Currant planting in letters “BRYN MAWR”

Over twenty neighbors plant 200 alpine currant bare root shrubs and vinca ground cover to complete the first of many steps towards beautifying the I-394 entry to the neighborhood.

Sat. May 27, 2000-Perennial Border planting: Since the demolition work at the gas station would not be completed until later this summer, (and with the approval of CCP/SAFE) we used those grant funds to purchase (300) perennials. Eighteen neighbors from the included blocks planted these perennials at the base of the “Bryn Mawr” hedge that others had planted the weekend previously. These plantings form part of the Bryn Mawr gateway at the I394-Penn Avenue entrance to the neighborhood, and are located on the hillside on the west side of Penn Avenue between I394 and Mt. View. We are fortunate to have the assistance of both the Water and Sewer departments of Minneapolis to help us secure a fire hydrant hookup and locate a 150 foot garden hose under Penn Avenue through the storm sewer for watering of the hedge and perennial border. Several neighbors help with watering and weeding during the summers. We



2001 SIGNAGE HEDGE  
PERENNIAL BORDER



2001 MEDIAN  
PLANTING







FALL 2001 VIEW OF MEDIAN



CEDAR LAKE PRKWY GARDEN

## BRYN MAWR NEIGHBORHOOD: NEIGHBORHOOD REVITALIZATION PROGRAM -- PHASE 1 PROGRESS

celebrated with a potluck lunch after planting. Then, three days of rain during the Memorial Day weekend jump-started the shrubs, perennials and grass seed that we planted.

Sat. Oct. 21, 2000-Bulb Planting: Twenty-three neighbors from the included blocks planted 1300 daffodils at the Bryn Mawr gateway next to the Bryn Mawr hedge and perennial border. When even using a power auger to dig over two-hundred holes in bone-dry dirt proved nearly impossible, we enlisted nearby neighbors and their hoses to pre-soak the planting area to facilitate the digging. With a gas-powered auger, water, and the hard work of all involved; we finished in about four hours. We then celebrated with a potluck lunch on-site and imagined the flowers that would appear next spring!

Saturday, June 9, 2001 – Median planting – fifty neighbors plant 1100 perennials in medians in two hours.

Future gateway improvements may include the following: planting lilacs and/or climbing vines in front of I-394 sound walls, organizing regular cleanups of the highway entrance/exit ramps, greening the parking lots visible as one enters Area 2 (South Frontage Road), and—as a much longer range plan—replacing the Penn Avenue Bridge chain link with decorative metal railings and ornamental light posts similar to those above I-35 in Central and South Minneapolis.

Saturday and Sunday, October 13 and 14, 2001 – fourteen hardy souls braved rain and cold to plant 4,000 daffodil bulbs at the medians and hillside.

### 2.1.1 or 2.1.2 Cedar Lake Parkway gateway garden

Neighbors planned and planted a Cedar Lake Parkway to help identify Area 1 as Bryn Mawr and to apply the same neighborhood greening plans to this area. Area 1 neighbors planted 1,000 daffodils early Spring 2002 and implemented the full planting master plan on Saturday, June 1, 2002.

The newest garden in Bryn Mawr had its first plants placed in the soil on April 15<sup>th</sup>, 2002. Mary Borgh, Area 1 Rep and volunteers Linda Steiner, Susan McGinnis and Lynne Chell spent an hour on April 15<sup>th</sup> putting about 1000 daffodils, hyacinths, narcissi, wood hyacinths, irises, and 3 peony bushes into the ground. The plants in this garden are designed to present a profusion of color and scent throughout the warmer months. They will include Phlox, various sedums, yuccas, Stella D'Oro, Coral Bells, Salvia, Cushion Spurge, Artemesia, Liatris, Aster, Dwarf lilacs,



and more. All these plants can handle some degree of salt (from the Parkway) and all enjoy sunlight, which this bed gets in abundance.

In fall, 2001, Minneapolis Park and Recreation Board agreed to let Bryn Mawr adopt a signage garden in Area 1 on Cedar Lake Parkway (at 22<sup>nd</sup> Street). MPRB crews tilled a 50X6 foot garden in the median at 22<sup>nd</sup> Street and placed lots of compost in the bed. This spring, with minimal turning of the soil, the garden was ready to plant.

Funding for plants for this garden was to have come from a CCP/Safe Block Club grant – the garden and gardening was to be the mechanism for neighbors getting to meet and know each other. But funding slashes eliminated this program. So, new sources of funding or plants are being sought. The Minnesota Green program, organized and administered by the Minnesota State Horticultural Society makes possible many of the Bryn Mawr community gardens, or community landscapes. Wholesale and retail plant nurseries as well as private individuals contribute seeds, plants, shrubs, trees, paving materials, and tools to member community greening groups agreeing to beautify public right of ways and public spaces.)

### 2.1.2 Upton Community Garden

Corner of S. Cedar Lake Road & Upton Ave.

Though not funded by NRP, this garden marks a western gateway into the neighborhood. In 1992, the Bryn Mawr Garden Club began this garden which now includes bulbs, annuals, perennials, evergreen & deciduous shrubs, trellises, ornamental grasses, prairie flowers, miniature roses, in borders and isolated formal beds, a lift garden with tender summer-flowering bulbs in front of shrubs that screen the compost and service portions of the garden from view. Garden members grew perennials and annuals from seed to create the new boulevard beds. The ongoing maintenance needs for this garden illustrates several important points. First, location-location-location is critical in selecting a community garden site: it must be central, visible and supported by adjacent residents. Secondly, securing volunteers, planning and funding is critical. Lastly, a sustainability plan ought to be an integral part of the community landscaping plan.

### 2.1.3 Bryn Mawr Neighborhood Association - BMNA

The Bryn Mawr Neighborhood Association was incorporated in 1976. The BMNA and its communication organ, the Bryn Mawr Bugle, have been an integral part of the community since



*"Bring back crime reports!"*



MEMBERSHIP DRIVE ENVELOPE





SHARE THE HARVEST  
DINNER



## BRYN MAWR NEIGHBORHOOD: NEIGHBORHOOD REVITALIZATION PROGRAM -- PHASE 1 PROGRESS

the incorporation of BMNA. Neighborhood volunteers make up the Board and represent the seven geographic areas of Bryn Mawr plus five officers. Elected area representatives bring specific area concerns to the attention of the Board.

STRATEGY FUNDS ALLOCATED: (NRP "staff")

LEVERAGED FUNDS:

TOTAL PROJECT FUNDS:

EXPENDITURES:

IMPLEMENTING ORGANIZATION/PARTNERS:

MEASURABLE OUTCOMES:

\$46,500 for independent contractor

\$23,831 approx. in BMNA funds

\$71,500 so far; ongoing program

\$71,500 so far, program continues

BMNA

Funded independent contractor  
since 1997/1998

### HIGHLIGHTS:

- **May - Bryn Mawr Annual Dinner and Elections:** attended by up to 200 people (BMNA is trying to grow this event). A potluck dinner and celebration of the end of winter. Business meeting to vote for BMNA Board members and to hear a review of things past and things to come from elected officials.
- **July - Ice Cream Social:** attended by about 600 neighbors and BMNA membership drive kickoff. A fun summer evening of music, face painting, ice cream and cake and neighborhood building.
- **August – National Night Out.** A block by block celebration of being a community.
- **August 2001 and 2003 – Bryn Mawr Music Festival.** Arts and Crafts, children's zoo, food, beer and superb local music. Lack of sponsorship or profit threaten continuation of event.
- **October – Share the Harvest Dinner.** A fall harvest celebration held in late October. BMNA provides the roast turkeys and trimmings, neighborhood provides the rest of the meal potluck. About 200 in attendance. Another event the BMNA is trying to grow. Non-perishables collected are donated to local food shelf organizations.

### 2.1.3 Maintain the historic boundaries of Bryn Mawr

- **2000 – Successfully negotiated with neighboring neighborhoods, City Planning Department and the City Council, new boundaries for the neighborhood that preserved the historical and emotional boundaries of Bryn Mawr.**
- **2002 – Successfully negotiated with the State and City Redistricting Boards to preserve and maintain the historical District and Ward boundaries of Bryn Mawr.**

**Three ex-BMNA Board Presidents testified at the City Redistricting Hearings to keeping Bryn Mawr an intact and southern oriented neighborhood.**

- **Working with a special tax attorney, hired by NRP, to file the Bryn Mawr Neighborhood Association as a 501c4 organization.**
- **A CPA hired by NRP audits BMNA and its use of NRP funds on an annual basis. Our audits indicate BMNA keeps excellent records and uses NRP funds appropriately.**

**2.1.3, 8.1.1 & 9.1.1 Bryn Mawr Neighborhood Volunteers  
On City Council Advisory or Neighborhood Advisory Committees  
(appointees of the BMNA or City Council Member)**

- Bryn Mawr representation on the Walker Design Committee.
- Bryn Mawr representation on the Downtown Library Committee.
- 6 members (2 City Council Member appointees and 4 appointed by BMNA) on the Bassett Creek Valley Master Planning (MaP) Committee and its successor, the Bassett Creek Valley Redevelopment Oversight Committee (BCV ROC).
- Bryn Mawr representation on the Cedar Lake Parkway Redesign Committee (Brownie Bridge).
- Bryn Mawr representation on the Bryn Mawr Elementary School Design Committee.
- Bryn Mawr representation on the Bassett's Creek Bike Trail Design Committee

**2.1.4 Develop and maintain a neighborhood directory & website**

STRATEGY FUNDS ALLOCATED:

\$ 0; funds included in other strategies

LEVERAGED FUNDS:

\$ 0; advertising is possible

TOTAL PROJECT FUNDS:

\$ 3,000 plus \$25/mth. web hosting

EXPENDITURES:

\$ 3,000 plus \$25/mth. web hosting

IMPLEMENTING ORGANIZATION/PARTNERS:

BMNA

MEASURABLE OUTCOMES:

website hosted; (3) directories produced; 4<sup>th</sup> directory in progress



BRYN MAWR  
NEIGHBORHOOD DIRECTORY



[www.bmna.org](http://www.bmna.org) WEBSITE

1950 - Com. Bldg, N.Side of Laurel



1962



1963



1997



2003



## BRYN MAWR NEIGHBORHOOD: NEIGHBORHOOD REVITALIZATION PROGRAM -- PHASE 1 PROGRESS

### HIGHLIGHTS:

- **1998 – BMNA started maintaining an electronic list of neighbors who join the Bryn Mawr Neighborhood Association and who are willing to serve on various committees and activities.** The list is available only to BMNA Board members and to BMNA committee chairs for BMNA activities. Names can be sorted by street, by area, and by those willing to volunteer.

**The website <http://www.bmna.org> had been created and hosted in the past; a new website was completed, and has been hosted and maintained since November 2004. Much neighborhood communication (incl. NRP planning; Bugle newspaper) is posted.**

### 2.1.4

**Bryn Mawr Telephone Directory.** The first telephone directory was compiled in 1996/1997, published and distributed to every household in Bryn Mawr. The second telephone directory was published in 2001, third directory published in 2003-4, and a fourth directory is in progress, with a publishing date of mid- to late-2005. The Directory is available only to Bryn Mawr residents and businesses and cannot be used for solicitations. It is an effective tool of allowing neighbors and businesses to get and keep in touch.



COMMERCIAL BUILDING AT SOUTHWEST CORNER  
OF PENN AVENUE AND CEDAR LAKE ROAD



BUMPER STICKER SOLD  
BY BMNBA - BRYN MAWR  
NEIGHBORHOOD  
BUSINESS ASSOCIATION

### Retail Setting—Provide and maintain an attractive retail center

**3.1.1 Bryn Mawr Neighborhood Business Association (BMNBA) incorporated in 1999**

STRATEGY FUNDS ALLOCATED:

LEVERAGED FUNDS:

\$0

BMNBA, since its incorporation has received funding from MCDA and



BRYN MAWR NEIGHBORHOOD: NEIGHBORHOOD REVITALIZATION PROGRAM -- PHASE 1 PROGRESS

TOTAL PROJECT FUNDS:

EXPENDITURES:

IMPLEMENTING ORGANIZATION/PARTNERS:

MEASURABLE OUTCOMES:

winter festival, garden tours, neighborhood merchandise, making downtown Bryn Mawr more into a gathering place; beautifying it

HIGHLIGHTS:

now CPED for its activities; it also raises funds from the garden tour, sales of neighborhood merchandise, and its memberships

\$ 6,000 in CPED Annual Funding

\$ 6,000

BMNA initially, now BMNBA

17 members, more or less active,

- **Membership grown from 3 to 17.** A quarterly newsletter has been printed in the past, focusing on news relevant and important to the Business community.
- **In its first year, the BMNBA held periodic public meetings on subjects of value to Home Based and Retail Based businesses in Bryn Mawr:** MCDA acting Director Keith Ford spoke on programs and monies available through the MCDA. Iric Nathanson spoke on programs and monies available through the MCDA. Volunteer CPAs at Lurie, Besikof and Lapidus (a national accounting firm located in Bryn Mawr) conducted a seminar on tax laws relevant to home based businesses. Based on attendance and the presence of home based associations elsewhere, BMNBA chose to focus its efforts for premised based retail businesses.
- Created and sold Bryn Mawr caps, hats, and T-shirts (very successful fundraisers for the BMNBA) & Bryn Mawr bumper stickers. Items are for sale at downtown businesses.
- **Saturnalia – December 2001** through present - The Bryn Mawr Neighborhood Business Association has a winner of an event with potential for growth. Each year, an estimated 400 to 500 people visited Downtown Bryn Mawr during the events and 250 of them went on the hayrides. There were also participants from Harrison, which was nice, as the BMNBA had hoped to make this an event to be enjoyed by both Bryn Mawr and its closest neighbors. Santa made a dramatic entrance and talked to the young. Over 10 pounds of chestnuts were roasted and consumed. Marshmallows and graham crackers were roasted over



ROASTING  
CHESTNUTS  
ON AN OPEN  
FIRE



BAREBONES PUPPET  
THEATER ACTORS

WINTER SPRITE



*"Christmas shouldn't shouldn't be made into a roman pagan festival – celebrate Christmas/Hanukkah."*



2004 GARDEN  
TOUR  
HIGHLIGHTS



## BRYN MAWR NEIGHBORHOOD: NEIGHBORHOOD REVITALIZATION PROGRAM -- PHASE 1 PROGRESS

roaring firepots. Music and puppets from Barebones puppets provided entertainment to the crowd. It's an event offered free to the neighborhood and has received many compliments.

- **Many past activities for children during Saturnalia** have included a coloring contest, book reading, facepainting, and a visit from Santa Claus.

**Lighting up the Downtown area:** Organized since the BMNBA's formation in 1999, businesses have coordinated the decorating of the Downtown area with lights and trees for the pleasure of passersby.

- **Business Signage and magnets:** a new signage board with the names of the businesses in the Downtown area has been mounted on the Penn Avenue side of the Bryn Mawr Market Building.

### 3.1.1

- **Blooming Bryn Mawr Garden Tour:** With seed money from a Minneapolis Community Planning and Economic Development -CPED (formerly MCDA) grant and matching funds from the BMNBA and lots of help from several very committed volunteers and Bryn Mawr gardeners and business owners, the first Blooming Bryn Mawr Garden Tour was created. It was a resounding success with some 300 visitors from around the state coming to view about 20 Bryn Mawr gardens. Held five years since 2000, the Blooming Bryn Mawr Garden Tour showcases our community landscapes as well as private urban gardens. Tour proceeds fund community greening efforts. In part to avoid competition from the St. Anthony Garden Tour held in odd-numbered years, tour organizers have decided to produce this event in the future in even-numbered years only. In the alternate years, Bryn Mawr Garden Club members will assist the Kenwood Garden Club with their garden tour.

### 3.1.1

- **Minneapolis Unwrapped:** In 2001, the Bryn Mawr Downtown area was one of three small business nodes selected by Mayor Sayles-Belton's Minneapolis Unwrapped Program to showcase what fun can be had and what can be bought in your own neighborhood.

Bryn Mawr Neighborhood Business Association co-sponsored the Bryn Mawr Festival of Garage Sales with the Boy Scouts of America.

### 3.2.1 Beautify Downtown Bryn Mawr

STRATEGY FUNDS ALLOCATED:

\$63,000

LEVERAGED FUNDS:

\$ 3,000 from Bryn Mawr Mobil

\$ 4,000 from CCP/SAFE

\$ 5,000 + from MSHS MN Green

\$ 1,000 from NSP (now Xcel) and

Tree Trust Power of Working

Together Grant

TOTAL PROJECT FUNDS:

\$76,000 approximately

EXPENDITURES:

\$76,000 by end of 2005/2006

IMPLEMENTING ORGANIZATION/PARTNERS:

Mpls Public Works, MPRB Forestry,

MPRB Horticulture, Bryn Mawr

businesses, MN Green, CCP/SAFE,

Xcel (formerly NSP), Tree Trust

Trees, planters, gardens, signage

MEASURABLE OUTCOMES:

HIGHLIGHTS:

#### 3.2.1 Laurel Triangle Garden

Intersection of Cedar Lake Road and Laurel and Oliver Avenues West

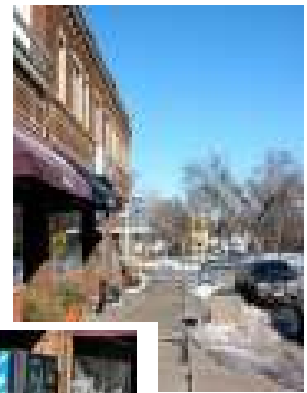
Though not funded by NRP, Laurel Triangle falls within Downtown Bryn Mawr boundaries.

Garden Club members & adjacent neighbors started this garden in Fall 1998 with funds from City of Minneapolis CCP/SAFE Block Connections grants. We've added flowers, trellises, and the large rock that we've received as donations from the MN Green Program and participants such as Bailey Nurseries, Hennepin Technical College, and the Como Conservatory. The consistent reddish-tan color in the precast concrete pavers, crushed aggregate path, and the large rock used as a bench help to unify the plantings. Explorer series climbing roses grow on arbors, while bittersweet and trumpet vine help to disguise utility pole cable supports.

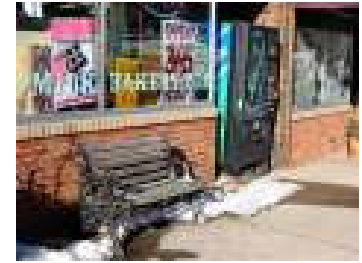
#### 3.2.1 Newton Triangle garden

Intersection of Cedar Lake Road and Newton and Hawthorne Avenues West

The Bryn Mawr Garden Club along with neighbors renovated this garden and planted bulbs in fall of 1999, and planted annuals and perennials this spring, clematis on center trellis, daylilies, miniature roses, and butterfly flowers such as purple coneflower, black eyed susan, monarda, and liatris. Though not funded by NRP, this garden marks an eastern neighborhood gateway.



BEFORE



AFTER

LAUREL  
TRIANGLE  
SEPT. 1999







1997



GAS STATION BEFORE



GAS STATION AFTER  
PLANTER INSTALLATION

## BRYN MAWR NEIGHBORHOOD: NEIGHBORHOOD REVITALIZATION PROGRAM -- PHASE 1 PROGRESS

### 3.2.1

**Flowers and benches in Downtown Bryn Mawr:** Annual greening efforts organized since 2001 with funds from NRP, BMNBA and business volunteers; 13 flowering pots were planted in the downtown area for the appreciation by passersby. Benches were purchased and placed in the downtown area for the comfort of shoppers and residents.

### 3.2.1

- **Worked with BMNA and Bryn Mawr Garden Club to create flowerbeds in the downtown area.**

#### 3.2.1 Downtown Bryn Mawr gardens

Penn Avenue and Cedar Lake Road; Oliver Avenue and Cedar Lake Road

Since the Spring 1999 planting Spring of Snow Crabapple trees along the boulevard in front of the local dentist's office, garden club members have and interested neighbors added daylilies and daffodils to the boulevard beds. In the alley adjacent to the Bryn Mawr Market, we planted donated annuals and perennials along with roses contributed by the Market owners. In 2000, neighbors constructed a planter out of 8 tons of native Kasota stone at the corner gas station. Neighbors planted perennials and shrubs at the boulevard beds at this gas station and at the nearby Bryn Mawr Coffee Shop. Neighbors and the Bryn Mawr Neighborhood Business Association plant and maintain many planted containers as well. The Bryn Mawr Neighborhood contracted with the City of Minneapolis Public Works Sidewalk Department and Forestry Department for sidewalk demolition and planting of Japanese Tree Lilac, Skyline Honey Locust, and Linden Trees.

Saturday, Aug 26 & Sunday, Aug 27, 2000-Gas Station Planter construction & shrub planting: After the asphalt demolition and planting of three Linden trees were completed by the Minneapolis Departments of Public Works and Forestry (under Bryn Mawr NRP contracts), eleven neighbors from nearby blocks constructed a Kasota (MN Dolomite) stone planter during fourteen hours over two days! Using eight tons and nine cubic yards of top soil, we created a new planter and boulevard beds, beautifying the Bryn Mawr Mobil gas station. Then during five more work sessions, ten additional neighbors planted perennials, bulbs, alpine ground covers, ornamental grasses, and evergreen and flowering shrubs. Neighbors from the surrounding blocks and gas station employees brought us food and drink during the main work sessions and watered the newly planted landscaping from the time of planting through the November 15<sup>th</sup> hard freeze.



By far, the highlight of these gardening projects was the community building, as well as the generosity of neighbors who donated over \$500 worth of perennials, bulbs, and shrubs, as well as food and beverages! Through the on-going planting, we have garnered more volunteers to employ on future gardening projects! We've enjoyed a lot of potluck meals at gardening sites. We were encouraged by many honks and waves from drivers passing by our planting sites during our work sessions! Through the generosity of those who donated plants, we were able to complete far more planting than we had expected. The additional planting and maintenance dates helped to connect neighbors to one another more than in past years!

Saturday, September 2-Monday, September 4, 2000: After concrete demolition at the Bryn Mawr coffee shop and the planting of five Honey Locust and four Japanese Tree Lilacs were completed by the Minneapolis Departments of Public Works and Forestry (under Bryn Mawr NRP contracts), nine neighbors planted evergreen shrubs, peonies, perennial flowers, spring flowering bulbs, daylilies, and ornamental grasses at the boulevards at Cedar Lake Road and Oliver Avenue. We used garden hoses from several neighboring homes to water the newly planted trees and perennials from the time of planting through the November 15<sup>th</sup> hard freeze.

Saturday and Sunday, October 13 and 14, 2001: neighbors planted 1,000 daffodil bulbs remaining from the median planting at the various Downtown Bryn Mawr gardens: the Bryn Mawr Market alley, Bryn Mawr Mobil Station planter and boulevards, Bryn Mawr Coffee Shop boulevards, and Laurel Triangle boulevards.

Beautification projects in Downtown Bryn Mawr have included: adding more sidewalk planters, adding plantings at Bryn Mawr Coffee Shop and Classic Tailors (coordinated with the re-paving of the parking lots there), installing wood and metal dumpster enclosures and adding permanent planters/trees as property and business owners agree, and—as a long range goal—adding banners/ornamental light fixtures to the wooden utility poles or buildings.

### 3.2.1

Working with the City of Minneapolis to remove/control proliferation of newsboxes at the intersection of Penn and Laurel Avenues, we discovered that we can't remove because of 1<sup>st</sup> Amendment rights to free speech. However, we can control how they are presented. Bloomsbury Market designed and constructed a decorative metal enclosure for the newsboxes which we relocated next to and in front of a blank stone wall, next to the bus stop shelter.



BEFORE



AFTER



BEFORE



AFTER



CLOSE-UP VIEWS OF RED-STAMPED FAUX-BRICK CONCRETE BOULEVARD S, TREES, AND PLANTINGS



### 3.2.1 Streetscaping Construction in Downtown Bryn Mawr

Thanks to all of you who have endured the 2004 construction of the new sidewalk curbs, boulevards, and planting beds at the intersection of Penn Avenue and Cedar Lake Road, the heart of downtown Bryn Mawr. After many years of planning and discussion, this greening and beautification is taking place.

Funded by both Bryn Mawr Neighborhood Revitalization Program monies and the City of Minneapolis Public Works Department, this project replaced many cracked sidewalk panels and damaged curbs and corrected the sub-standard pedestrian intersection curb ramps. Our neighborhood's downtown design committee selected the red-brick stamped concrete boulevard design to delineate the separation between vehicular and pedestrian traffic, in a similar way that the residential grassy boulevards do. Committee members visited similar streetscaping projects during the design phase; the faux-brick concrete was preferred over pavers due to concerns about uneven surfaces and weeds in the path of pedestrian travel. Ornamental pedestrian-scaled streetlights were reviewed and considered as an option but were not included for several reasons: a cost of \$6,000 per light pole was prohibitive, ongoing maintenance and energy fees would have borne by the neighboring properties, the general feeling of nearby neighbors indicated dislike for these types of light poles, and finally, these additional items would have further constricted a tight sidewalk environment. It is hoped that business and building owners may consider adding building mounted decorative lighting during future building renovations and upgrades.

In 2004, Bryn Mawr Neighborhood and the Minneapolis Park and Recreation Board (MPRB) planted a total of seventeen new trees in the downtown Bryn Mawr area to add welcome future shade and changing seasonal interest. Minneapolis Park and Recreation Board Foresters assisted in the selection of the types of tree for their hardiness to drought and salt and for their disease-resistance; and because similar species are planted nearby. While striving to maintain a diversity of tree species city- or neighborhood-wide, MPRB does plant trees of the same species on one block or street because this technique allows for synchronized pruning and maintenance of the trees. This technique also provides an organized and unifying appearance. Additionally, overhead utility lines necessitated the planting of trees of shorter mature stature: Spring Snow Crabapple, a non-fruiting variety with an oval crown; and Ivory Silk Japanese Tree Lilac, known for its summer blooming and interesting seed pods. For those interested in the tree selection, we provide the following information on tree cultivars.

BRYN MAWR NEIGHBORHOOD: NEIGHBORHOOD REVITALIZATION PROGRAM -- PHASE 1 PROGRESS

Accolade American Elm, a Dutch Elm disease-resistant cultivar is planted at the east side yard of Mill City Dental and at the far east boulevard of Bryn Mawr Mobil gas station.

Spring Snow Crabapple is planted on the north side of Laurel Avenue and Cedar Lake Road at Mill City Dental, near the store entry of Bryn Mawr Market, and inside the ornamental metal fence along Penn Avenue at Bryn Mawr Mobil.

Ivory Silk Japanese Tree Lilac is planted on the south side of Cedar Lake Road, at the planting beds of Studio 411 (and on the north side of Cedar Lake Road at Bryn Mawr Coffee Shop)

Imperial Thomless Honeylocust is planted at Classic Tailors and at the Oliver Avenue boulevard of Bryn Mawr Coffee Shop.

Renaissance Reflection Paper Birch, a birch borer-resistant paper birch, with brilliant white exfoliating bark developing after 4 years of age, is planted in the front yard of D.J.'s Upholstery

Autumn Gold Ginkgo is planted on the north and south sides of Cedar Lake Road, in front of Bloomsbury Market, Travel About, Rolayne's Hair Design, Bryn Mawr Pizza and Deli, and on northeast corner of Penn Avenue and Cedar Lake Road. Ginkgo is an extremely hardy tree with connections to prehistoric times, and is thus sometimes referred to as a "living fossil".

Princeton Sentry Ginkgo, a more-columnar variety is planted on the Penn Avenue frontage of Cuppa Java and Centuries Antiques.

Sentry American Basswood, or Linden is planted on the north side of Cedar Lake Road at Bryn Mawr Mobil. A related species, Little-leaf Linden is planted on the inside of the ornamental metal fence at this location.

Perennials will be planted in the planting beds and annuals will be planted in pots and containers and, possibly, in hanging pots as well. Residents who are interested in volunteering or in contributing plants are encouraged to contact Greg Lecker at 612-377-8915 or [glecker@michaudcooley.com](mailto:glecker@michaudcooley.com).



SW CORNER PENN AVE &  
CEDAR LAKE RD IN 1997  
BEFORE CUPPA JAVA'S  
ARRIVAL AND RENOVATIONS



SW CORNER IN 2003 AFTER  
CUPPA JAVA'S ARRIVAL AND  
RENOVATIONS



SW CORNER PENN AVE. &  
CEDAR LAKE ROAD AFTER  
2004 STREETSCAPING  
IMPROVEMENTS







NW CORNER PENN AVE & CEDAR LAKE RD AFTER BUSINESS ASSOCIATION SIGNAGE & STREETSCAPING IMPROVEMENTS

*“Please do something about empty corner”*  
*“constantly changing”*  
*“empty corner is an eyesore”*  
*“it brings down the rest of the neighborhood”*  
*“Could be fantastic”*  
*“... a nice store or restaurant”*  
*“...a bakery”*



MILL CITY DENTAL SIGN – BUSINESS GRANT FUNDING

BRYN MAWR NEIGHBORHOOD: NEIGHBORHOOD REVITALIZATION PROGRAM -- PHASE 1 PROGRESS

Finishing touches applied to the new downtown Bryn Mawr streetscaping project include Kasota stone path edging, black plastic chain and heavy duty black corner posts with finial by Bloomsbury Architectural Metals (Bloomsbury Market’s custom metalwork studio).

Thanks especially to Bryn Mawr Presbyterian Church for their addition of many trees (Maple, Little-leaf Linden, Oak and Crabapple) to their lawn triangle. Within several years, these trees should begin to add welcome shade for such neighborhood events as the Ice Cream Social or Festival of Garage Sales. A new addition on the Cedar Lake Road frontage is the designation of two handicapped parking spaces adjacent to the existing handicapped loading zone. This accommodation will be available not just to folks attending meetings at the Church but also to other-abled visitors to our storefront businesses.

Again, thanks to residents and business owners for their patience and understanding during the parking, noise and dust inconveniences of the construction which has enhanced the business district!

**3.2.2 Matching Grant Program**

**2001-2004 Bryn Mawr Neighborhood Business Improvement Grant** program offered to encourage business and property owners to improve their building facades and sites, leading to revitalization of a formerly tired-looking though successful neighborhood commercial node.

STRATEGY FUNDS ALLOCATED:	\$44,998.00- \$39,169 granted
LEVERAGED FUNDS:	\$29,423.20
TOTAL PROJECT FUNDS:	\$68,592.40
EXPENDITURES:	\$68,592.40, \$5,828 remaining to be reallocated to streetscaping
IMPLEMENTING ORGANIZATION/PARTNERS:	CPED (formerly MCDA), BM NRP downtown business grant committee
MEASURABLE OUTCOMES:	15 grants to 11 different businesses over three years of grant program

**HIGHLIGHTS:**  
 The Bryn Mawr Neighborhood Association NRP Downtown Committee has approved several grants funded by the \$45,000 that Bryn Mawr residents allocated to improving the exterior appearance of businesses in the downtown Bryn Mawr node. The Bryn Mawr Neighborhood



**BRYN MAWR NEIGHBORHOOD: NEIGHBORHOOD REVITALIZATION PROGRAM -- PHASE 1 PROGRESS**

Downtown area is bounded on the west by Queen Avenue South as it intersects Laurel and South Cedar Lake Road; on the north, by the alley at Penn Avenue between South Cedar Lake Road and Hawthorn; to the east, by the parking lot on South Cedar Lake Road between Oliver and Newton Avenues; and on the south, by the alley on Penn Avenue between South Cedar Lake Road and Mount View. Each two dollars of the grant (\$5,000 maximum per business) must be matched by one dollar from the grant recipient. The matching and grant funds must both be spent toward permanent, visible, exterior property improvements such as painting, sandblasting, masonry work, windows, doors, signs, awnings, lighting, driveway and parking lot resurfacing, and permanent landscaping. For example, the first grant awarded provided for re-paving an asphalt parking lot and leaving open ground at two locations within the lot for landscaped planters. Besides these and other parking lot and exterior sales floor resurfacing, other grant projects have included window replacements, signage, roofing, light posts, awnings, and ornamental metal fencing.



**BRYN MAWR MOBIL  
GAS STATION  
ORNAMENTAL METAL  
FENCE – BUSINESS  
GRANT FUNDING**



**PLAN FOR DOWNTOWN BRYN MAWR  
STREETSCAPING IMPROVEMENTS AT PENN  
AVENUE AND CEDAR LAKE ROAD**

As funds allow, remaining downtown improvement projects may include:

- installing additional trees and red-stamped faux-brick concrete boulevards along Penn Avenue north of Cedar Lake Road

**1953 VIEW OF 411 SOUTH  
CEDAR LAKE ROAD**



**2002-2004: 411 S. CEDAR LAKE  
RD – STUDIO SPA 411 ROOFING  
VIA BUSINESS GRANT FUNDING,  
STREETSCAPING**



**2002-2004: BLOOMSBURY  
MARKET CANOPIES,  
CONCRETE RESURFACING -  
BUSINESS GRANT FUNDING**



PLANTER; PARKING LOT  
RESURFACING – BUSINESS  
GRANT FUNDING



OVERVIEW OF BASSETT'S  
CREEK PARK FROM  
GLENWOOD AVE EAST OF  
VINCENT AVE. N – SITE OF  
NEW SIGNAGE, BUCKTHORN  
REMOVAL, AND WILDFLOWER  
PLANTINGS

#### BRYN MAWR NEIGHBORHOOD: NEIGHBORHOOD REVITALIZATION PROGRAM -- PHASE 1 PROGRESS

- designing, fabricating and installing banner poles that may incorporate sculptural elements. One or two of the gateway signposts, the house and tree design, could be installed in the sign collars that were cast into the concrete boulevards
- Adding more trees at the patio of the Bryn Mawr Coffee Shop and adjacent Lake of the Isles Chiropractic
- Replacing the existing boulevards at Bryn Mawr Coffee Shop with red-stamped faux-brick concrete boulevards to match the rest of downtown Bryn Mawr, while simultaneously enlarging the planting beds to permit more space for tree roots, water, and air

#### **Neighborhood Within a Park: Develop and enhance the Bassett Creek Valley McKnight Foundation names Bassett's Creek one of the original Ten Twin Cities Treasures – quoted from their website:**

"When Minneapolis was founded, Bassett's Creek was a pristine stream flowing from Medicine Lake to the Mississippi River near Nicollet Island. Settlers fished and swam in its waters, and its current was used to power one of the first sawmills in the region.

"But with rapid development in the 19th century, changes in the creek's watershed drastically altered its condition. Vital wetlands were filled, tributaries were diverted, and flooding increased downstream. To solve flooding, the natural meandering course of the creek was straightened and the last few miles were diverted into underground pipes that empty into the Mississippi River.

"By the 1960s, nine municipalities were within the creek's watershed: Crystal, Golden Valley, Medicine Lake, Minneapolis, Minnetonka, New Hope, Plymouth, St. Louis Park, and Robbinsdale. In 1969, these municipalities formed the Bassett's Creek Water Management Commission.

"Although Bassett's Creek remains an important amenity to surrounding suburbs, in Minneapolis it is largely an unknown resource. Its banks are overgrown with invasive species in some places, and eroding in others. Industrial areas sit close to its shore, access is limited, and a major portion remains hidden from view. However, with restoration, this waterway could become as vital to our region as Minnehaha Creek.

"Minneapolis now has a Bassett's Creek Valley Master Plan that aims to restore some of the creek's natural meandering, as well as features such as flood plains, wetlands, wet meadows,



and native vegetation. Goals include improved water quality, public parklands, walking paths, and an important habitat corridor between the Mississippi River and Theodore Wirth Park.

“Citizen groups such as Bryn Mawr Neighborhood Association and the Harrison Neighborhood Association are keenly interested in restoring Bassett's Creek. They are helping rebuild paths and eroded areas, participating in city planning oversight, and advocating for responsible development.

“The Friends of Bassett's Creek facilitate annual cleanup efforts, promote nature walks along the creek, and are committed to creating a vibrant urban green space in the Bassett's Creek Valley. Water quality is improving and parts of the Creek can be navigated by canoe again.

“Visitors can experience Bassett's Creek Valley in Theodore Wirth Park, in Bryn Mawr Park just north of Highway 394 and east of Penn Avenue, and at its Mississippi River outlet south of Broadway Avenue. Walking along the creek, it's easy to imagine how relocation of some commercial properties, care, and restoration will create a new amenity for the region.

To learn more, please visit:

- [www.embraceopenspace.org/openspace/learn/t\\_bassett.aspx](http://www.embraceopenspace.org/openspace/learn/t_bassett.aspx)
- [www.bassettcreekwmo.org/](http://www.bassettcreekwmo.org/) “

#### **4.1.1 Improve Bassett's Creek Park**

Bassett's Creek Park (this section of the park is located south of Glenwood Avenue, east of Vincent Avenue North and west of Thomas Avenue North and north of Chestnut Avenue) was formerly a neglected park overgrown with buckthorn. The Creek had spilled around its waterfall, eroding an ever-increasingly larger section of its bank and its shoreline path each year. Paths, particularly at the ravine bridge and at a 1940's Works Progress Administration (WPA)-era stone staircase were covered with dirt and tree roots. Not surprisingly, Bassett's Creek improvements are NRP projects with great impact on the neighborhood. These projects were the single largest funding item in the action plan after housing improvements. In addition, these projects have involved the most number of volunteers, inter-neighborhood cooperation with Harrison Neighborhood, and public-private partnerships.

Bassett's Creek was formerly classified as a “drainage ditch” by the Army Corps of Engineers. In Fall 2002, McKnight Foundation and its Embrace Open Space Partners selected Bassett's Creek as one of its original Ten Cities Treasures.



**BASSETT CREEK FALLS  
AFTER BLOWOUT REPAIR**



**BASSETT'S CREEK PARK WPA  
RAVINE BRIDGE OVER SPRING,  
N. OF CHESTNUT & UPTON AVE.**



#### 4.1.2 Improve Bassett's Creek Park

STRATEGY FUNDS ALLOCATED:

\$96,491

LEVERAGED FUNDS:

\$45,000 Board of Water & Soil  
Resources (BWSR) grant

TOTAL PROJECT FUNDS:

\$141,491

EXPENDITURES:

\$135,000

IMPLEMENTING ORGANIZATION/PARTNERS:

MASLA, MPRB Horticulture and  
Environmental Operations; MPRB  
Engineering, MPRB Maintenance,  
Barr Engineering, Hennepin County  
Conservation District, Bassett's  
Creek Watershed Commission,  
Harrison Neighborhood Association,  
Friends of Bassett Creek

MEASURABLE OUTCOMES:

See description below

HIGHLIGHTS:

- **Blowout repairs/Bassett's Creek Bank and Falls Restoration Project (completed October 2001):** Bryn Mawr leveraged \$30,000 of its Bassett's Creek NRP funds and \$10,000 of in-kind services from various city agencies, (largely MPRB) with interests in Bassett's Creek, to win a \$40,000 Challenge grant from the Board of Water and Soil Resources (BWSR) to stabilize the southern/western bank of Bassett Creek at Fruen Mill. The BMNA contributed additional funds to the project to get the work extended to cover more creek bank footage and to restore some of the walking shoreline path. The waterfall at Fruen Mill, in danger of having its rocks dislodged by heavy rains, was also stabilized. This project was completed in October 2001.

#### 4.1.4 Luce Line/Bassett Creek Bike Trail

STRATEGY FUNDS ALLOCATED:

\$52,500

LEVERAGED FUNDS:

\$200,000 - \$250,000 from MN State  
Legislature, \$33,500 from Harrison  
Neighborhood Assoc. NRP for native  
tree, shrub, & wildflower planting

TOTAL PROJECT FUNDS:

\$242,500 to \$302,500



BASSETT CREEK OVER VIEW  
FROM GLENWOOD AVENUE  
BRIDGE



SOCCER FIELD & LUCE LINE  
TRAIL (FORMERLY CALLED  
BASSETT CREEK TRAIL)

BRYN MAWR NEIGHBORHOOD: NEIGHBORHOOD REVITALIZATION PROGRAM -- PHASE 1 PROGRESS

EXPENDITURES:

\$247,500 to \$297,500 with \$5,000 remaining to be expended for trail signage

IMPLEMENTING ORGANIZATION/PARTNERS:

MPRB

MEASURABLE OUTCOMES:

Trail constructed in 2002

HIGHLIGHTS:

- **Luce Line Trail (formerly known as Bassett's Creek Bike trail) - interim route approved by all parties and construction completed in 2003:** Necessitated by CP Rail's refusal to sell or lease its land reasonably to MPRB for use as a bike trail, the Minneapolis Park and Recreation Board planning staff identified a new, scaled down and much less costly alignment for the Luce Line Trail, to be constructed entirely on land it currently owns. For about \$300,000, the trail extension connects Theodore Wirth Park with the Cedar Lake Bike Trail, thus creating a continuous bike trail from Hutchinson into the heart of the City, except for the gap through Golden Valley. For an additional \$150,000, a soccer field in Bassett's Creek Park was moved and upgraded, making room for the trail. The total \$450,000 tab to get the work done was extraordinarily modest for the results - a 3-mile connector bike and walking trail through Bassett's Creek Park. This trail completion fills yet another gap in the superb bicycle trail system planned by the Minneapolis Park and Recreation Board. Some of the funds used to build this trail were Bryn Mawr NRP funds and the rest was provided through state and other sources. A team of neighborhood volunteers testified at the Senate (with great support from Representative Margaret Anderson Kelliher and Senator Linda Higgins) – resulting in funds allocated to the Park Board with instruction to use to create the Bike Trail.

**4.1.3 & 4.1.5 Bassett Creek Valley Restoration**

STRATEGY FUNDS ALLOCATED:

\$ 5,000 + \$ 300

LEVERAGED FUNDS:

\$ 5,000 – 2001 DNR Grant

\$ 300 EPA Organic Gardening Grant

\$ 300 Bryn Mawr Garden Club match

TOTAL PROJECT FUNDS:

\$ 10,900

EXPENDITURES:

\$ 10,900

IMPLEMENTING ORGANIZATION/PARTNERS:

MASLA, MPRB Horticulture and Environmental Operations; Friends of Bassett Creek; MN Green, USDA



BASSETT'S CREEK PARK RESTORATION, STEP ONE: REMOVING BUCKTHORN WITH WEED WRENCHES



## BASSETT'S CREEK PARK RESTORATION, STEP TWO: WILDFLOWER PLANTING



A. DIPPING WILDFLOWER  
“PLUGS” AND PLANTS INTO  
TERRA-SORB, A WETTING  
AGENT



B. PLANTING  
WILDFLOWERS IN AREAS  
WHERE BUCKTHORN HAS  
BEEN REMOVED

## BRYN MAWR NEIGHBORHOOD: NEIGHBORHOOD REVITALIZATION PROGRAM -- PHASE 1 PROGRESS

Organic Gardening Grant from  
MSHS, MPRB, matching grant from  
Bryn Mawr Garden Club and Bryn  
Mawr NRP, Hennepin County  
Sentencing to Service Work Crews  
See following description

### MEASURABLE OUTCOMES:

#### HIGHLIGHTS:

The Minnesota Chapter of the American Society of Landscape Architects (MASLA) designed the Bassett Creek Valley Park's restoration master plan as part of their 100 Parks for 100 Years celebration in honor of their 100<sup>th</sup> anniversary. Neighbors participated in this design process as part of the Minneapolis Neighborhood Revitalization Program (NRP) and continue to remove invasive buckthorn in this area. Partners include the Minnesota Department of Natural Resources, the City of Minneapolis Departments of Forestry and Horticulture, and MASLA.

Beginning in May 1999, Minneapolis Park and Recreation Board staff and members of the Minneapolis Chapter of the American Society of Landscape Architects (MASLA) completed research, made several presentations, and facilitated discussions regarding the master plan for Bassett's Creek Park, including the Creek Bank Restoration Project. In addition, seven members from these public-private partners led neighborhood volunteers in several work sessions in the Bassett's Creek Park: removing buckthorn from a few sample areas, uncovering a Works Progress Administration-era (WPA) stone staircase, removing trash from the creek, and uncovering a path and boulder-faced bridge over a small ravine.

Building on annual Spring and Fall Bassett's Creek cleanups sponsored by the Friends of Bassett's Creek, a fortuitous and invaluable relationship with MASLA has led to a master plan that is slowly being implemented. In May 1999, MASLA selected the Bassett's Creek Valley Park as a project to celebrate their 100th Anniversary (100 parks for 100 years – two parks in each of the 50 states), thus jump-starting the ongoing volunteer investment chronicled here:

**May 1999** Relationship between MASLA, MPRB, Bryn Mawr and Harrison begins

**October 1999** MASLA, University of Minnesota College of Architecture and Landscape Architecture (CALA), and University landscape design students work with residents from both Bryn Mawr and Harrison neighborhoods in a morning indoor planning process for the entire Bassett Creek Park. Then an afternoon clean-up session involving four teams highlights the assets/potential of Bassett's Creek Park - the creek, steps,



BRYN MAWR NEIGHBORHOOD: NEIGHBORHOOD REVITALIZATION PROGRAM -- PHASE 1 PROGRESS

knoll, ravine bridge, and paths. It was especially rewarding to see the teamwork among MASLA/Bryn Mawr/Harrison folk to restore this community treasure

**May 2000** Clean-up day

**May 2001** MPRB forestry crews clear all debris, non-Minnesota native vegetation from a 1.5 acre planting area south of Glenwood and west/south of the creek at Fruen Mill. Soil was treated to retard return of invasive ground cover plants

**June 23, 2001** Along the west bank of Bassett Creek south of Glenwood Avenue and east of Vincent Avenue North, neighbors planted 5,000 wildflowers in the Bassett Creek restoration which includes an upland prairie (tall and short grass), woodland flowers (both spring and fall blooming), and a wetlands (including yellow flag iris and sedges). A total of (33) residents and (3) MPRB staff members and a MASLA design specialist volunteer about 140 hours in planting several thousand wetland, woodland, and prairie plants. Funding is provided by a \$5,000 Department of Natural Resources (DNR) grant and \$5,000 in matching funds from Bryn Mawr. The DNR approved the building/creation of a wetlands habitat on the south/west side of the creek, thus improving the wildlife habitat. In addition, the funding was sufficient to create and plant a small woodlands habitat and a small uplands habitat. All plants in the project are Minnesota natives.

**September 29, 2001** (13) residents volunteer 24 hours in weeding and deadheading weeds in the wetland area and removing buckthorn saplings

**November 2001** (9) residents volunteer 16 hours to continue to remove buckthorn saplings and replant woodland area with understory trees/shrubs.

**May 2002** MPRB and Bryn Mawr representatives walk the restored habitats and determine how much replanting will need to be done and determine that there are sufficient funds to build a split rail fence to keep bikers out of the planting area.

**December 7 and 21, 2002** – MPRB Forestry, Bryn Mawr & Harrison volunteers, and Sentencing to Service workers cut and chip buckthorn over a 2 acre parcel of Bassett's Creek Park. Chips are spread on paths. Over the next several years, more buckthorn is cleared from this area and from areas near the Ravine Bridge and spring.

**September 25, 2004** - volunteers plant 70 white and bur oak seedlings in Bassett's Creek Park.

Future projects may include the following: continuing to remove buckthorn from Bassett Creek Valley Park, designing and installing interpretive signage and benches for this park, installing split-rail fencing along the paths of the planting restoration area south of Glenwood Avenue,



TEMPORARY PLANT ID SIGNS  
USED ON PLANTING DAYS  
AND SPECIAL TOUR DAYS



PUBLIC EDUCATION: BRYN  
MAWR BUGLE ARTICLES AND  
ILLUSTRATIONS DESCRIBING  
NATIVE PLANTS AND  
WILDFLOWERS

BRYN MAWR NEIGHBORHOOD: NEIGHBORHOOD REVITALIZATION PROGRAM -- PHASE 1 PROGRESS

planting a clear-cut area located between Vincent Avenue and Bassett Creek, restoring paths, and restoring the boulder facing of the ravine bridge (located roughly on a line down from Upton Avenue between Chestnut and Bassett Creek).

**4.1.5 Residential Buckthorn Pickups in 2003 and 2004**

STRATEGY FUNDS ALLOCATED:

\$0

LEVERAGED FUNDS:

\$ 1,000 USDA Invasive Species Grant

\$ 750 (approx. in buckthorn registration contributions

TOTAL PROJECT FUNDS:

\$ 1,750

EXPENDITURES:

\$ 1,750

IMPLEMENTING ORGANIZATION/PARTNERS:

Bryn Mawr Garden Club, volunteers

MEASURABLE OUTCOMES:

Over two years, 2003 and 2004, about 120 cubic yards of buckthorn chipped, or about 29 tons of buckthorn chipped, buckthorn collected from about 55 residential and business properties  
Residential buckthorn education and pickup campaign supported and augmented buckthorn removal efforts in adjacent parkland

HIGHLIGHTS:

**4.1.5; 6.2.1, & 6.2.2 Buckthorn Removal in Bassett's Creek Park, Quaking Bog (February 2004), Cedar Lake and Brownie Lake (Fall 2004 onward)**

**SUCCESSFUL BUCKTHORN REMOVAL AT QUAKING BOG; Another Example of Cooperative Restoration Efforts**

By Greg Lecker and Hyun-Soo Lee

On Saturday, February 28, 2004, about thirty volunteers cut and removed glossy buckthorn and other invasive species from the Quaking Bog in Theodore Wirth Park. Hyun-Soo Lee, an Eagle Scout candidate, organized this event and recruited his Golden Valley Boy Scout Troop and neighbors from Golden Valley, Bryn Mawr and Harrison. The timing was of the utmost importance: scheduled for late winter, when the bog would still be completely frozen over but when the snow cover will have diminished enough to allow workers to clip the buckthorn plants



AN INVASIVE NON-NATIVE SHRUB OR SMALL TREE, BUCKTHORN IS THE BRUSH PULLED AND DISCARDED IN THE FOREGROUND

with impunity throughout the entire area, allowing them to clip the buckthorn as close to the ground as possible. As it turned out, the day was gloriously sunny with high temperatures in the upper-forties.

The Quaking Bog and its Mariana's Isle are located in a two-acre depression in Theodore Wirth Park, between I-394 and Glenwood Ave, and west of Theodore Wirth Parkway, adjacent to the "waterworks" cross-country ski trail and near where the City of Lakes Loppet 10K tour was routed this year. Hyun-Soo chose the location because of memories of time spent exploring the bog as a child and skiing nearby as a young adult. He hopes that by restoring the ecosystem to a more pristine condition, he will be able to pass on these experiences to other generations of children.

The project entailed the clearing from the bog of an invasive species, glossy buckthorn, as it is encroaching onto the native species, slowly but surely threatening the diverse yet delicate ecosystem of the bog. Glossy buckthorn, which tends to live in a wetland-type habitat differs from common buckthorn in several ways: it has no thorns and it bears berries that can be in various stages of ripening—in colors from cream, to red, blue, and black. The problem with both of these invasive species is that they have been removed from their ordinary habitat, where their natural predators lived. The buckthorn is very prolific, its presence being found in all areas of the bog in great numbers, requiring work to be done as soon as possible.

Minneapolis Park and Recreation Board horticulturists tagged the native trees and shrubs that should not be cut. By pack and by sled, organizers brought in abundant food and drink as well as the many tools that would be required. Volunteers clipped the buckthorn as close to the ground as possible with loppers and small hand-saws, hauled the clipped branches, and stacked the brush along the waterworks trail. Lastly, representatives from the Minneapolis Park and Recreation Board, the Arboretum, and a local tree care service sprayed the stumps with growth inhibitors (herbicides similar to Rodeo, that are labeled as safe for use in critical wetland habitats).

## **Neighborhood Within a Park—Facilitate needed improvements at Bryn Mawr Meadows**

### **5.1.4 Tree Planting at Bryn Mawr Meadows**

In Spring 1999, thanks to a Power of Working Together grant (funded by the TreeTrust and Excel Energy (then Northern States Power), neighbors planted twenty crabapple trees.

*"It's important to invest in parks and natural areas – key to making it a unique neighborhood"*

*"Fantastic access to park lands and bicycle trails!"*

*"Bike trails are excellent!"*

*"More communication about trails – maps."*

*Bryn Mawr Meadows:*

*"Sidewalks need to be taken care of and shoveled"*

*"More soccer fields"*

*"Security – neighborhood lighting of parks at night, especially parking areas."*

*"Park needs lights and more work done on paths."*

*Bassett's Creek Park – "replace old wood playground equipment with new, safer ones for the little ones."*



*“Resurfacing of Ewing Ave S. from 22<sup>nd</sup> to bridge approach”  
“I find that the street lights are frequently out along Cedar Lake – response time is slow when outages are reported.”*

*“Need clear lakes & canoe storage for Bryn Mawr only.”*

*Playground at 24<sup>th</sup> & Drew Ave- “We love our new park!”*



RENOVATED PLAYGROUND SOUTH OF CEDAR SHORE DRIVE – MADE POSSIBLE BY MPRB CAPITAL IMPROVEMENTS PROGRAM; DESIGN STEERED BY CITIZENS ADVISORY COMMITTEE, BRYN MAWR NEIGHBORS



## BRYN MAWR NEIGHBORHOOD: NEIGHBORHOOD REVITALIZATION PROGRAM -- PHASE 1 PROGRESS

Minneapolis Parks and Recreation planted twelve additional trees along Laurel Avenue and along Chestnut Avenue near Bassett Creek Valley Park. The planting demonstrates the importance of planting the proper trees under and near overhead utility lines. The City of Minneapolis Forestry Department organized and supervised the planting itself and maintain the trees. Since then, MPRB has resurfaced the parking lot and most of the park’s walking paths.

### **PLANNED REMEDY FOR CLEAR CUT IN BASSETT’S CREEK PARK**

At Bassett’s Creek Park, the clear cutting in maintenance of overhead utility lines was especially aggressive this fall because the last clearing was completed over thirteen years ago. In addition, trees and brush had grown up and through the park board’s chain link fence, damaging it. Xcel Energy and MPRB came to an agreement regarding extensive clearing to remove these woody plants and to maintain the fence line path that serves to provide pedestrian access as well as park admittance by utility truck to maintain the overhead power lines. agreement After a meeting with neighborhood representatives, Xcel Energy and MPRB came to an agreement and a plan to replant the area most impacted by this clear cut – an area just south of the WPA staircase and directly across the Bassett Creek from Fruen Mill.

### **Neighborhood Within a Park: Make needed improvements to the Cedar Lake and Brownie Lake Area**

**Reserve Block Tot Lot 40; Playground renovations & renaming:** Via its Capital Improvements Program (CIP), Minneapolis Park and Recreation Board (MPRB) funded the redesign and reconstruction of the playground, Reserve Block Tot Lot 40 immediately south of Cedar Shore Drive, in an area that is bounded by Bryn Mawr, Cedar-Isles-Dean and St. Louis Park. Residents from the three areas cooperatively participated in a citizens advisory committee. In the near future, MPRB plans to rename this playground based on citizens’ input.

**Renaming of Cedar Lake Beach:** Formerly, the Cedar Lake beach that falls within Bryn Mawr Neighborhood’s boundaries was alternatively called “First Point” or “North Point” depending on who was referencing the area. Bryn Mawr Neighborhood petitioned the MPRB to formally name this beach Bryn Mawr Point Beach. Unfortunately, and contrary to the neighborhood’s wishes, MPRB named and signed the area Cedar Lake Point Beach.

Spring 2005 landscaping at the Cedar Lake Parkway bridge at Cedar Lake Parkway north of its intersection with South Cedar Lake Road, northeast of Drew and Ewing Avenues.

### 2005 BUCKTHORN BUSTING AT BROWNIE LAKE PLANNED

Neighborhood volunteers and Hennepin County Sentencing to Service (STS) work crews worked together in fall 2004 to knock down buckthorn growing on the northeast end of Brownie Lake. Paths have been made more safe, visible and open; and views to the lake have been acquired. Using funding from our Neighborhood Revitalization Program parks budget, we plan to organize a large buckthorn removal operation for Saturday, April 9 and again in Fall 2005. This funding will pay for Saturday overtime fees, both to avoid taking foresters away from Elm tree removal and to allow use of our volunteers to stretch our limited monies farther. As structured in the past, Minneapolis Park and Recreation Board (MPRB) foresters wielding chain saws will cut and fell buckthorn and operate a large-scale chipper. Neighborhood and Target Corporation volunteers and STS crews will drag and stack buckthorn for removal. If and when buckthorn chipping occurs, volunteers and STS crews can then spread the buckthorn wood chips on the Brownie Lake paths. We plan to work primarily on the east side of the lake, opening up vistas along the paths that connect Cedar Lake Park, trails and the new parkway bridge with the upland prairie northeast of Brownie Lake. We hope to return in the future to remove buckthorn from the west side of Brownie Lake, possibly with the assistance of the adjacently located Target Corporation. The path on the west side of the lake has already received some clearing and widening, courtesy of the City of Lakes Loppet ski race course preparation.

### Safety—Respond to concerns for personal and community safety

In general, Bryn Mawr remains one of the top two safest neighborhoods in the City of Minneapolis. However, during the summer of 1994, a crime spree of an estimated 50 burglaries from homes (including resultant injuries to persons and pets) led to respondents to a survey remarking that crime and safety were high priorities. The following year, robberies dropped dramatically as those responsible for the crimes were arrested and then moved away. Calls for crime and safety committee meetings resulted in few if any participants. Since then, crimes have consisted of a few home burglaries; nuisance soliciting; several robberies from persons; burglaries from cars and garages; auto theft; one suicide in a park, and an isolated incident of shooting with no injuries. In general, neighbors are vigilant and call 911 often. Our neighborhood organizer, our local CCP/SAFE team and book club leaders distribute Crime Alerts door-to-door and via e-mail, and organize community meetings to address specific incidents. The \$2,500 allocated for safety funding has provided continued funding for our neighborhood organizer.



VOLUNTEERS LOADING BUCKTHORN INTO CHIPPER: LARGE TREES GO IN, AND OUT COME WOOD CHIPS FOR WALKING PATHS

TAMARACK: DECIDUOUS CONIFER

BROWNIE LAKE WILL BECOME EVEN MORE VISIBLE TO PARK USERS WHEN BUCKTHORN IS REMOVED



*"As our neighborhood becomes a more desirable place to live, it becomes a more desirable place for criminal activity. We need to increase our efforts in making our neighborhood safe, well lit, and strengthen the bond between neighbors and members of our community so that we may watch out for each other and each other's property. Additional street lighting, neighborhood watch training, and community events should be top priorities."*



ENTRY SIGN AT BRYN MAWR ELEMENTARY AND ANWATIN MIDDLE SCHOOL, BRYN MAWR COMMUNITY CENTER



ANWATIN MIDDLE SCHOOL



BRYN MAWR ELEMENTARY SCHOOL

## BRYN MAWR NEIGHBORHOOD: NEIGHBORHOOD REVITALIZATION PROGRAM -- PHASE 1 PROGRESS

### Schools—Establish education as foundation and define neighborhood schools as geographical and educational center of Bryn Mawr

#### 8.1.1 Anwatin Middle School Improvements

STRATEGY FUNDS ALLOCATED:	\$ 40,000; 33,060.79 used
LEVERAGED FUNDS:	\$ 40,000
TOTAL PROJECT FUNDS:	\$ 73,060.79
EXPENDITURES:	\$ 73,060.79
IMPLEMENTING ORGANIZATION/PARTNERS:	Minneapolis Public Schools, School Board
MEASURABLE OUTCOMES:	20 + new computers in lab

#### HIGHLIGHTS:

- **1999 - Planned Anwatin Middle School improvements** did not include funding for the computer lab upgrade that was deemed necessary. Bryn Mawr residents voted to fund \$40,000 for **20+ new computers for the Anwatin Middle School**. With this NRP allocation, we were able to leverage \$40,000 through our partnership with the Minneapolis School Board and the State of Minnesota. Without this funding, computers would not be available for a class that needed them. Not only does this benefit school children (research, internet) at this school, but for a one-year trial period, the computer lab was made available one evening per week to the general public. During this period, a neighbor volunteered to staff the computer lab during open computer evenings (since cancelled due to lack of interest).

#### 8.1.1 Bryn Mawr Elementary School Improvements

STRATEGY FUNDS ALLOCATED:	\$5,690
LEVERAGED FUNDS:	\$ 0
TOTAL PROJECT FUNDS:	\$ 0
EXPENDITURES:	\$5,690
IMPLEMENTING ORGANIZATION/PARTNERS:	Minneapolis Public Schools, School Board
MEASURABLE OUTCOMES:	Design input and community kitchen

#### HIGHLIGHTS:

*"Schools becomes the community center."*

*"Add a youth program. What about a youth volunteer to help seniors that may need help from able-bodied young people in exchange for senior buddy & a sense of history. Require seniors to provide aid to teens in some way – tutor/mentor. Screen program on both ends."*



- **Neighborhood architects and designers volunteered their design expertise** to improve the layout of the Bryn Mawr Elementary School Campus and especially the building entries, site entry and entry signage and gate configuration.
- **1999 – Bryn Mawr committed \$10,000 of its NRP funds to buying the kitchen equipment in the Community Kitchen at the Bryn Mawr Elementary School.** Not only does this fully equipped community kitchen benefit staff and faculty at the school, but it has also benefited our neighborhood organization. For the Bryn Mawr Neighborhood Association, the fully equipped community kitchen has allowed for large neighborhood activities such as the Harvest Dinner, the Annual Dinner, and other neighborhood public meetings where refreshments are served.
- **2003 – Native tree and shrub collection:** Through a Tree Trust grant and with the help of neighborhood volunteers and all 500+ students from Bryn Mawr Elementary School, a tree and shrub collection has been planted in the rear grounds of the school.

**St. Margaret's Mosaic at the Bryn Mawr Elementary School** – with a grant from the Heritage Preservation and Smithsonian American Art Museum's Save Outdoor Sculpture grant, a specialist in outdoor mosaics analyzed the St. Margaret mosaic. Next steps will include raising the funds and having the repair work recommended by the specialist done.

**Traffic—Provide excellent multi-modal transportation and facilities to ensure safety, livability and vitality of neighborhood**

**9.1.1/9.2.1 Neighborhood Traffic Plan/Traffic Calming Plan**

STRATEGY FUNDS ALLOCATED:	\$18,000
LEVERAGED FUNDS:	\$ _____ Hennepin County
TOTAL PROJECT FUNDS:	\$ _____ for Penn Ave. traffic study
EXPENDITURES:	\$ 300, approx. for signage
IMPLEMENTING ORGANIZATION/PARTNERS:	Metro Transit, Hennepin County
MEASURABLE OUTCOMES:	Study
HIGHLIGHTS:	

- **Public Transportation** – Bryn Mawr successfully advocated for some bus service to be temporarily returned during the midday hours to Area 1 (after Metro Transit had eliminated all midday traffic to that area). Feedback at Bryn Mawr public meetings persuaded transportation authorities to change the bus route by Target Center downtown to eliminate



BRYN MAWR ELEMENTARY SCHOOL COMMUNITY KITCHEN



NATIVE TREE AND SHRUB COLLECTION AT BRYN MAWR ELEMENTARY SCHOOL



BUS AND AND OTHER VEHICLES AT BUSY INTERSECTION OF PENN AVE. AND CEDAR LAKE ROAD

EVERYONE HERE  
HAS AGREED  
DRIVING SAFELY  
IS GOOD  
INDEED!



EXAMPLE OF “BURMA-SHAVE” INSPIRED JINGLE TO ENCOURAGE TRAFFIC SAFETY; THIS “BRYN MAWR” LOGO-TYPE IS ALSO FEATURED ON T-SHIRTS SOLD BY NEIGHBORHOOD BUSINESS ASSOCIATION



NEW CEDAR LAKE PRKWAY BRIDGE EASES ACCESS TO PARK TRAILS AND LAKES



*Design & Construction:*

*“Sure took a long time, but it is great.”*

#### BRYN MAWR NEIGHBORHOOD: NEIGHBORHOOD REVITALIZATION PROGRAM -- PHASE 1 PROGRESS

excessively long drive times because of congested traffic. Reducing how often buses run through Bryn Mawr at various times in the day and night (because of shortage of funding) hurts Bryn Mawr’s public transportation efforts. Routing buses on Penn Avenue in addition to Cedar Lake Road adds confusion for users and has reduced on-street parking available in downtown Bryn Mawr.

- **Penn Avenue Traffic Study conducted in 2003** – Hennepin County funded and conducted a traffic study of Penn Avenue between Chestnut Avenue and I-394. “Bumpouts” were painted and marked with traffic bollards, parking bay visibly divided from roadway by painted white stripes. Horizontal orange bar striping is added to traffic speed signage. Officer and volunteer measured traffic speeds with “speed gun”. Additional traffic speeds measured with pavement-mounted sensors. Burma-Shave style signage posted to caution drivers to monitor their traffic speed. Enforcement is deemed to be the most effective measure to reduce traffic speeds.
- **Bumpouts at Penn Avenue and Mt. View are being considered for funding**
- **The absence of sidewalks is frequently discussed in Traffic Committee meetings. Most notably, a sidewalk is needed along the South Frontage Road of I-394 to provide a safe connection between Areas 3 or 4 and Area 2.**

*“Please reorganize efforts to address speed and traffic on Penn Ave.” “Rolling stops are an issue.” “Calming traffic along Penn Avenue should not be financial priority. Penn Avenue is a through street in an area just off the downtown of a major metropolitan area. Efforts to make it resemble a suburban cul-de-sac will not make it so.”*

- **2003/2004 - Cedar Lake Parkway Bridge reconstruction (Brownie Bridge).** A Team of Bryn Mawr neighborhood appointees to the Design Advisory Committee successfully advocated that, even though the cost would rise by approximately \$500,000, one lane of traffic must remain open at all times during reconstruction. In partnership with City and Park Board planners, the volunteers designed an intricate and safer, more user friendly system of bike trails, walking paths, greenery and lights for the new bridge construction and the surrounding land. Although the bridge opened in late fall 2004 after a two-year construction period, additional work remains to be completed. Landscaping will be installed in spring 2005, possibly in conjunction with a planned memorial ceremony to remember the bridge safety inspector who was killed during bridge surveying. In addition, re-paving of nearby Ewing Avenue and the addition of a paved pedestrian and bicyclist trail adjacent to Ewing Avenue is planned for 2005.

#### 9.4.2 I-394 EXPANSION ADDRESSED, SOUND WALL ADDED

##### STRATEGY FUNDS ALLOCATED:

\$5,000 and \$10,000

To review plans and monitor progress

##### LEVERAGED FUNDS:

\$ unknown amount in sound walls and resurfacing I-394 with asphalt; see pages 6 and 7 for a description of the Community Landscape Partnership Program to mitigate highway impacts

##### TOTAL PROJECT FUNDS:

\$ 15,000

##### EXPENDITURES:

\$ 15,000

##### IMPLEMENTING ORGANIZATION/PARTNERS:

BMNA, MnDOT

##### MEASURABLE OUTCOMES:

Sound walls and resurfacing

##### HIGHLIGHTS:

When Bryn Mawr was formed as a neighborhood at the turn of the last century, it was unified geographically. Since then, the neighborhood has been physically but not emotionally divided by the building of Highway 12 and its upgrade to I-394. At the time of the highway widening from two lanes (an exit only lane formerly ended at Penn Avenue) to three lanes, the Traffic/Transportation Committee hired a consultant, reviewed recommendations comparing asphalt overlay and concrete, and successfully worked to implement the expansion of the sound wall on the north side of I-394 west of Upton Avenue. The sound wall reduced the traffic noise somewhat and certainly quieted the visual “noise” of cars driving so close by the north frontage road. While the addition of a third lane did little to improve east-bound traffic (the Lowry Hill tunnel continues to be a bottleneck), the asphalt overlay did result in a sound reduction, at least temporarily, until seams opened up. In 2004, I-394 was resurfaced with “Nova-chip”, a new material with a longer expected life. In addition, since 2001, neighborhood volunteer Matt Stark and fellow neighbors have completed spring and fall highway litter cleanups along I-394 and its entry/exit ramps in Bryn Mawr. Traffic/Transportation Committee members plan to continue discussions with MN/DOT as to the future surface treatments of I-394.

*I-394 Improvements: “...Probably the most important issue BMNA has (become) involved in.”*

Landscaped park on deck built over freeway in Philadelphia →



I-394: IMPEDIMENT, OR EASY ACCESS?



*“I-394 is our lifeline!”*

*“It’s a bad design...Three lanes scrunching down to one with nearly a right angle turn????!! Is it any wonder that traffic is backed up in our back yard!”*

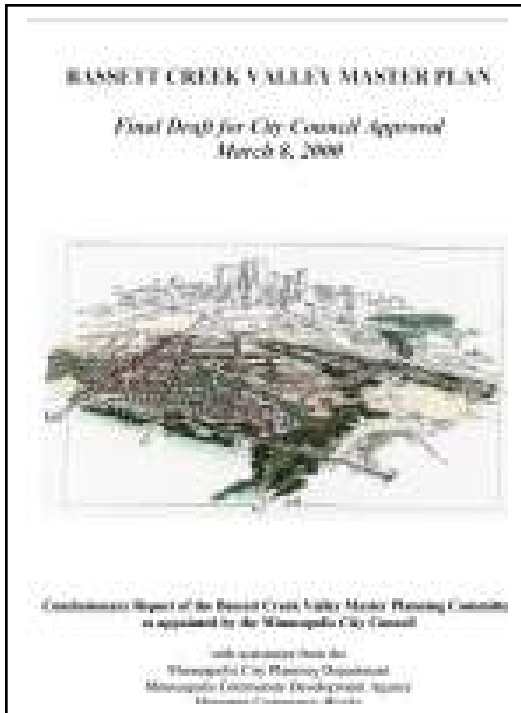
*“It’s really the physical issue of I-394. I love the north side of I-394 neighborhood. But there is a feeling of belonging to more to Cedar-Isles-Dean than Bryn Mawr.”*

*“Send the train our way!  
“Replace most of I-394 with light rail ...cleaner buses... provide small shuttles”*

*“Disappointed with reduced bus service”*







## Other Master Planning Efforts

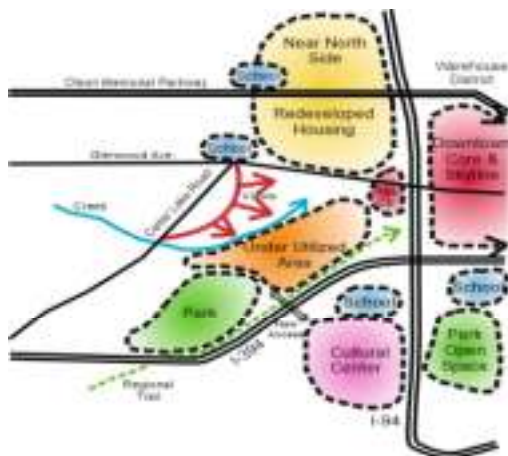
- **BASSETT CREEK VALLEY REDEVELOPMENT MASTER PLAN AND OVERSIGHT:** BMNA appointed 4 members to the Bassett Creek Valley Advisory Committees and City Council Member appointed 2 Bryn Mawrites to these Committees. The final document was presented to the City Planning Commission and the City Council for approval in March, 2000. The plan was approved in its entirety.

The Bassett Creek Valley study area is roughly bound by Cedar Lake Road on the west, 4th Avenue North on the north, I-94 on the east and I-394 on the south. Bryn Mawr Meadows, the Impound Lot and the city crushing facility all fall within the study area.

The BCV Plan presents some very exciting opportunities for change in the Valley area. It is a 20-year plan which very **strongly recommends the City Crushing Facility and the City Impound Lot be moved either totally or in great part away from the BCV area**. The plan recognizes that the Bassett Creek Valley is the Western Gateway to the City of Minneapolis and tries to make the gateway an inviting and beautiful one. It also acknowledges and accommodates the Park Board commitment to constructing new bicycle and pedestrian trails linking the Bassett Creek Valley on the west to Theodore Wirth Park and the Luce Line and on the east and south to downtown and to other trails such as the Cedar Lake Trail.

## Highlights of the Plan: <http://www.ci.minneapolis.mn.us/planning/basset/index.html>

- Creation of a new north/south boulevard – scheduled for completion in 2006/2007.
- West of the new connector, new development will be limited to mixed type residential buildings (apartments, town houses, single family dwellings).
- East of the new connector, land will be either commercial or industrial. On the west side of the north/south connector, in the area vacated by the City of Minneapolis Public Works rock crushing and storage yard, commercial, residential, or cultural regional facilities will be permitted. On the east side, the former City of Minneapolis Public Works Facility will be developed as commercial/industrial space.
- Farmer's Market will be encouraged to move into the area, with parking and access directly from the new Boulevard
- Bassett Creek, south of 2nd Avenue, should be restored to a more natural channel, and wetlands areas added to filter and clean stormwater runoff



### Market Forces

Bassett Creek Valley  
Master Plan

- Bryn Mawr Meadows will be expanded to the north to encompass Bassett Creek and a section of land north of the creek. Bicycle and pedestrian trails should be constructed along Bassett Creek.
- Park Board should develop adequate parking for users of both the new recreational land and the existing playing fields in Bryn Mawr on the eastern side of the Meadows, and accessed from the new Boulevard. There should be no net loss of open space within the current Bryn Mawr Meadows area. This includes multi-use playing fields that are free of fences, such as those used to enclose softball fields, so that there are no barriers to activities such as kite-flying, Frisbee tossing, dog-running, etc. That the aesthetics, sight lines, and visual openness of the current Meadows not be disturbed by future park development.
- Glenwood Avenue should be promoted as a mixed-use (mixed commercial and housing types, commercial on the bottom, housing on top) community corridor that connects residents, employees and visitors of the BCV to downtown Minneapolis.

To ensure that the Design Principles and recommendations of the BCV committee are used in the implementation and redevelopment of the study area, the Bassett Creek Valley Master Plan recommends the creation of a community based "Redevelopment Oversight Committee". Any deviation from the plan as recommended by the committee and approved by the City Council will need to be reviewed and approved by the Oversight Committee.

In 2002 in response to a proposed Anwatin Woods housing development, the **Bryn Mawr Land Use Committee** was formed to develop and apply the Bryn Mawr Land Use Plan.

**Alley Paved Between Thomas and Upton Avenue South; First Step/Early Access NRP**

STRATEGY FUNDS ALLOCATED:	\$9,000
LEVERAGED FUNDS:	\$9,000 in residential assessments
TOTAL PROJECT FUNDS:	\$18,000
EXPENDITURES:	\$18,000
IMPLEMENTING ORGANIZATION/PARTNERS:	BMNA; Minneapolis Public Works
MEASURABLE OUTCOMES:	One of three unpaved alleys paved
HIGHLIGHTS:	

Following pressure by residents of Thomas and Upton Avenue, NRP funds were diverted from developed action plan strategies to help defer the assessment cost of residential alley paving of one of three un-paved alleys.



PRESENTLY FLOWING  
HIDDEN WITHIN AN  
EXISTING INDUSTRIAL  
AREA, BASSETT CREEK IS  
AN AMENITY THAT  
FUTURE RESIDENTS AND  
PARK USERS COULD  
BETTER UTILIZE

*Development at Fruen Mill or  
in the Bassett Creek Valley?  
"Yes! Only if by private  
development and at market  
rate."*

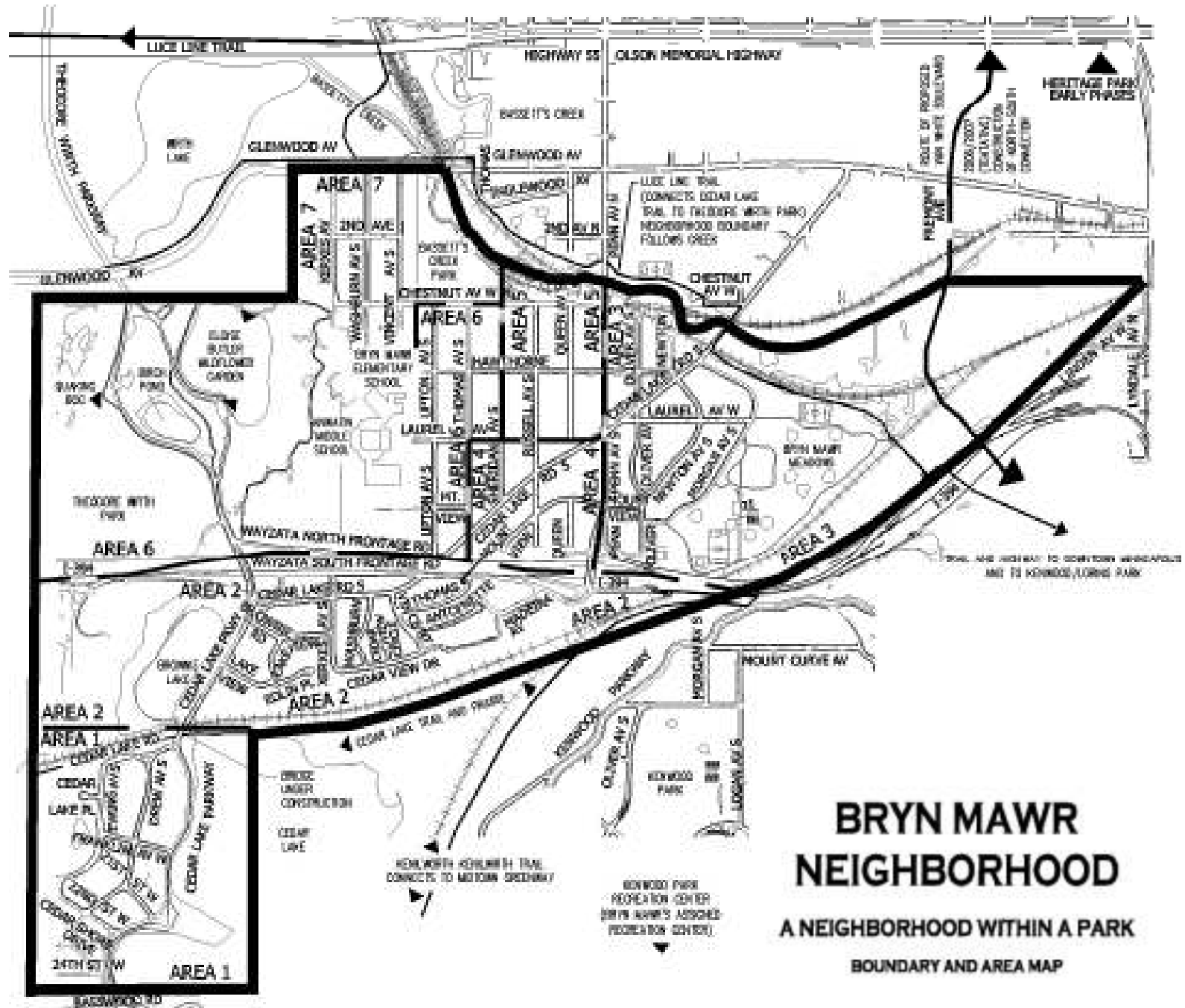
*"I would encourage BMNA  
not to over-react or to be  
intimidated by a single  
person or a small group of  
people."*

*"We need the rest of the dirt  
alleys done"*





BRYN MAWR NEIGHBORHOOD: NEIGHBORHOOD REVITALIZATION PROGRAM -- PHASE 1 PROGRESS



Complete Phase I survey results, including written comments and tabulated results are posted at the Bryn Mawr [www.bmna.org](http://www.bmna.org) website. Probably the most important survey results related to a review of Bryn Mawr Neighborhood's Phase I Neighborhood Revitalization Program are two sets of ratings.

The first rating category "Effectiveness in positive impact on the neighborhood as a whole of the following changes" comes in response to a question asking respondents to rate the effectiveness in positive impact on the neighborhood as a whole, of the changes listed on this page. Results summarized on this page are an "average" response (5 for Strongly Agree to 1 for Strongly Disagree) for each question in order to assist us with absorbing a large amount of quantitative data. However, the "average" includes only those responders who answered the question "1-5". It's also important to look at the percentage of responders who checked "No opinion" or skipped the question. The sum of these percentages is included as well.

**EFFECTIVENESS OF PHASE I ACTION PLAN:**

**Effectiveness in positive impact on the neighborhood as a whole of the following changes:**

	<b>Rating</b>	<b>Total % "No opinion", No answer</b>
"Downtown" Bryn Mawr business improvements such as resurfacing parking lots, new canopies, windows, roofing, signage, benches, ornamental railings, newsbox enclosure, trees, flower pots, stone planters, and red-brick stamped concrete	4.4	12%
Penn Avenue Gateway and Cedar Lake Parkway landscaping including the addition of median planters, signage hedge, and trees; and highway clean-ups	4.4	12%
Bryn Mawr Neighborhood Business Association formation and sponsorship of special events such as the Festival of Garage Sales, Blooming Bryn Mawr Garden Tour and the Saturnalia Winter Festival	4.4	17%
Cedar Lake Parkway bridge design and construction	4.4	20%
Reduction of buckthorn on neighborhood parkland and residential property	4.2	18%
I-394 improvements – resurfacing and sound walls added on the north side of I-394 – made possible in part by studies, requests and demands made by BMNA	4.2	23%
Providing community support through our Bryn Mawr Coordinator (Vida Ditter and previously Margaret Anderson Kelliher) since 1996	4.1	32%
Luce Line Trail construction (formerly called Bassett's Creek trail), which connects Cedar Lake Trail at Bryn Mawr Meadows to Theodore Wirth Park	4.1	32%
Bassett's Creek Park restorations including repairs to the falls and path "blow out" erosion areas, and wildflower plantings at the creek near Fruen Mill	4.1	34%
Neighborhood directory (phone & address) that BMNA has produced three times	4.0	23%
Playground renovation at 24 <sup>th</sup> and Drew Avenue in Area 1	4.0	57%
Neighborhood signage – copper & aluminum sculptures of house and tree mounted on black signposts at neighborhood entries	3.8	16%
BMNA.org website, recently redesigned and reopened	3.8	56%
Neighborhood school improvements, particularly Bryn Mawr Elementary School community kitchen and Anwatin Middle School computer lab	3.5	50%
Housing improvement program (needs-test based grant and loan programs offered 1995 through 2000).	3.4	64%
Housing Improvement Fair and counseling provided in 1995	3.2	77%

**Effectiveness of BMNA in meeting goals of its Action Plan**

	<b>Rating</b>	<b>Total % “No opinion”, No answer</b>
Provide and maintain a retail center that consists of shops serving Bryn Mawr neighbors with convenience goods and services in an area that is attractive and appealing and economically rewarding to the merchants	3.9	18%
Present Bryn Mawr as a united neighborhood containing seven areas	3.8	20%
Develop and enhance Bassett’s Creek Valley as a major city and neighborhood amenity	3.8	31%
Facilitate needed improvements to the Bryn Mawr Meadows	3.7	38%
Respond to the concerns for personal and community safety with a plan and program that reinforces neighbors watching out for each other, and with improved lighting around homes and on paths frequented by pedestrians	3.6	25%
Facilitate needed improvements to the Cedar Lake and Brownie Lake parks area	3.6	39%
Maintain and enhance the quality and diversity of the housing stock to retain and attract neighbors to Bryn Mawr	3.6	40%
Establish education as the foundation for our future and define our neighborhood schools, Bryn Mawr Elementary and Anwatin Middle Schools, as the geographical and educational center of Bryn Mawr	3.5	37%
Provide excellent multi-modal transportation access to and from the Bryn Mawr neighborhood, and facilities designed to ensure the safety, livability and vitality of the neighborhood	3.2	35%

The second rating category, “Effectiveness of BMNA in meeting goals of its Neighborhood Revitalization Action Plan” comes in response to a question asking respondents to rate the effectiveness of the Bryn Mawr Neighborhood Association in meeting the goals of its Action Plan. Results summarized on this page are an “average” response (5 for Strongly Agree to 1 for Strongly Disagree) for each question in order to assist us with absorbing a large amount of quantitative data. However, the “average” includes only those responders who answered the question “1-5”. It’s also important to look at the percentage of responders who checked “No opinion” or skipped the question. The sum of these percentages is included as well.



# UNITY/COMMUNITY/IDENTITY

[illegible]

# RETAIL CENTER: DOWNTOWN BRYN MAWR

[illegible]

# NEIGHBORHOOD WITHIN A PARK

Page of Action Plan	Citation	Strategy	Description	Contract	Vendor	Total NRP Allocations	Program Income	Contracted Amount for Strategy	Current Appropriation Remaining	Future Appropriation Available	Leveraged Funds	Sources of Leveraged Funds
16	4.1.1	Bassetts Creek - Change Designation	Change the designation of Bassetts Creek in City plans and agency programs from a drainage ditch to a creek.	At least partly as a result of NRP investments, Bassetts Creek is recognized in 2002 as one of Ten Twin Cities Treasures by the McKnight Foundation.								
16	4.1.2	Fruens Mill Walking Trail Improvements	Improve the condition of the walking trail west of Fruens Mill.	Contract with the Minneapolis Park Board to restore eroded shoreline along the south bank of the Glenwood Falls.	Park Board	\$85,000 plus \$300					\$45,000 plus \$900	BWSR - Board of Water and Soil Resources; EPA; Bryn Mawr Garden Club
17	4.1.3	Bassetts Creek - Water Quality	Improve the water quality of Bassetts Creek.	Contract with Minneapolis Park Board to enhance and restore wetland habitats adjacent to Bassetts Creek in the Bryn Mawr neighborhood.	Park Board	\$5,000.00					\$5,000	MN Dept. Of Natural Resources
				Master development/restoration plan completed by the Minnesota Chapter of the American Society of Landscape Architects to recognize their 100th Anniversary - 100 Parks for 100 Years - 2 parks were selected in each of 50 states								MN Chapter of American Society of Landscape Architects
17	4.1.4	Bassetts Creek - Design/Complete	Support the completion of the Bassetts Creek Bike Trail consistent with the final design that separates bike and pedestrian movements and maintains the natural environment of the creek and its adjoining vegetation.	Contract with the Park Board to construct a portion of the Bassetts Creek Trail in Bryn Mawr Meadows Park. This section of trail is part of a larger project that will connect the Luce Line trail to the Cedar Lake Trail. In order to reduce costs, it will be completed in conjunction with remaining portions of the Bassetts Creek Trail project, or the Wirth trail or Luce Line trail connections project.	Park Board	\$45,000 to \$52,500		\$47,500	\$5,000		\$200,000 to \$250,000 approx. Contact Tim Brown & Jennifer Ringold for more info.	Funding from MN State Legislature Bonding
17	4.1.5	Bassetts Creek - Improve Valley	Improve the Bassetts Creek Valley including the Fruen Mill walking trail, the soccer field in Harrison, parking for Bryn Mawr Meadows, and building a small gazebo.		Park Board	\$96,491		\$91,000	\$8,000			Soccer field improved with state funding
17	4.2.1	Support Friends of Bassetts Creek	Support the efforts of the Friends of Bassetts Creek organization as they identify projects of value to both Harrison and Bryn Mawr neighborhoods.	Support HNA in Bassetts Creek Cleanup; and in their contract with MPRB for Luce Line/Bassetts Creek Trail tree, shrub, and wildflower planting								
18	5.1.1	Bryn Mawr Meadows Improvements	Upgrade the restroom facilities in the Bryn Mawr Meadows park building.			\$16,000		\$4,000 \$3,500	\$8,500			
18	5.1.2	Bryn Mawr Meadows - Improve Sports Field	Improve the condition of the sports field in the Bryn Mawr Meadows.									
18	5.1.3	Bryn Mawr Meadows - Improve Tennis Court	Improve the Bryn Mawr Meadows tennis courts.	Enclose the tennis court with fencing and provide controlled entrance. Replace the tennis backboard once the fence work has been completed.	Park Board	\$4,000						
18	5.1.4	Bryn Mawr Meadows - Upgrade/Improve Path	Upgrade and improve the Bryn Mawr Meadows paths.									MPRB paved some walking paths and the parking lot in 2003
19	6.1.1	Playground - 24th and Drew	Replace playground equipment at the 24th and Drew Park.									MPRB completed this with CIP
19	6.1.2	Cedar Lake Trails	Upgrade and improve the Cedar Lake trails.									MPRB Capital Imp.
19	6.2.1	Brownie Lake Canoe Storage	Develop a canoe storage area at the south end of Brownie Lake.	MPRB denied request because of concerns related to safety, accessibility (slopes), erosion, parking, theft & graffiti, and costs; there were canoe rack vacancies in 2004. Buckthorn brush clearing is organized instead.	Park Board	\$3,500						



## SAFETY

Page of Action Plan	Citation	Strategy	Description	Contract	Vendor	Total NRP Allocations	Program Income	Contracted Amount for Strategy	Current Appropriation Remaining	Future Appropriation Available	Leveraged Funds	Sources of Leveraged Funds
20	7.1.1	Organize Residents	Organize residents to respond to safety concerns.	Independent contractor - distribute crime alerts, organize safety meetings and organize block club leader training		\$2,500	—	\$2,500	—	—		
20	7.2.1	Alley Lighting	Provide motion detector lights to residents who want to improve alley lighting.				—	—	—	—		
20	7.2.2	Park Lighting	Identify and improve park lighting on pedestrian paths.				—	—	—	—		
20	7.2.3	Blue Phones	Investigate the feasibility and value of placing 911 blue lights in strategic Bryn Mawr park locations.				—	—	—	—		
20	7.3.1	Organize Block Clubs/Residents	Increase participation in neighborhood safety programs.				—	—	—	—		
21	7.4.1	Establish Bike Safety Program	Set up a public education program for bicycle safety and bicycle security through easier bicycle registration and retrieval of stolen bikes.	Support CCP/SAFE for Bike Fair at Bryn Mawr Meadows			—	—	—	—		
10	First Step 3.1.1.b	Implement Safety Strategies	Implement personal safety strategies which may include: street lighting, child safety, the McGruff House program, police substation, and security phones in the park areas.				—	—	—	—		

## UNITY PARKS

11	First Step 4.1.1.a	Bassetts Creek - Identify Matching Funds	Secure NRP and private donation funding for design work on Bassetts Creek Corridor Trail. Identify other sources of income and provide the means to work with the Harrison neighborhood to assure that Federal funds are not lost. Bryn Mawr's commitment of funds assumes a commitment of Federal funds.	Minneapolis Chapter of American Society of Landscape Architects (MASLA) provided master planning with MPRB and, together, identified additional funding sources			—	—	—	—	\$1,000 plus \$1,000	
9	First Step 10.1.1	"Protect" fundamentally sound neighborhoods such as Bryn Mawr	"Protect" fundamentally sound neighborhoods such as Bryn Mawr. The neighborhood and public staff participate in development of the Minneapolis City Plan and assure that Bryn Mawr receives a designation that assures maintenance of the high value and quality of its homes.	Bryn Mawr NRP Independent Contractor			—	—	—	—		

## SCHOOLS

Page of Action Plan	Citation	Strategy	Description	Contract	Vendor	Total NRP Allocations	Program Income	Contracted Amount for Strategy	Current Appropriation Remaining	Future Appropriation Available	Leveraged Funds	Sources of Leveraged Funds
21	8.1.1	Bryn Mawr/Anwatin Schools - Communication	Maintain a good relationship and good communications with the neighborhood schools.				—	—	—	—		
21	8.1.2	Bryn Mawr Elementary School	Provide the Bryn Mawr Elementary School with kitchen equipment, media production equipment, and gym equipment.	Contract with the School Board to improve the structure and equipment of the Bryn Mawr Elementary Community School.	School Board	\$5,690.26	—	\$5,690	—	—		
21	8.1.3	Anwatin Middle School Computers	Provide Anwatin Middle School with computer equipment for its computer lab.	Contract with the School Board to provide up-to-date computer facilities to the Anwatin Middle School in the Bryn Mawr neighborhood.	School Board	\$33,060.79	—	\$33,060	—	—	\$40,000	School Board/ NRP Funds

## TRAFFIC/TRANSPORTATION

Page of Action Plan	Citation	Strategy	Description	Contract	Vendor	Total NRP Allocations	Program Income	Contracted Amount for Strategy	Current Appropriation Remaining	Future Appropriation Available	Leveraged Funds	Sources of Leveraged Funds
22	9.1.1	Neighborhood Traffic Plan	Create a neighborhood traffic plan through a committee with a special emphasis on the collector and arterial roads used by residents of Bryn Mawr and the I-394 and Penn Avenue intersection.	\$301.77 has been expended on making Burma-Shave style signs to test out on Penn Avenue during the summer of 2003, in conjunction with the bollard bumpout study conducted and funded by the county	Volunteers	\$5,000	—	—	\$4,698.23	—	—	Hennepin County conducted traffic study in 2003; added orange stripes to speed limit signs
22	9.2.1	Traffic Calming Plan	Develop and implement a traffic calming plan for Penn Avenue and the South Frontage Road.			\$12,750	—	—	\$12,750	—	—	
22	9.3.1	Bryn Mawr Meadows - Parking/Traffic	Develop alternative parking opportunities for Bryn Mawr Meadows and a traffic calming plan for streets accessing the Park, including Laurel Avenue.			—	—	—	—	—	—	
23	9.3.2	Identify Problem Streets/Intersections	Identify streets and intersections where speeding, ignoring of traffic signs, and other traffic infractions frequently occur. Police will use this identification to increase enforcement of existing laws.	Addition of two (2) stop signs at the intersection of Russell and Hawthorne Avenues		—	—	—	—	—	—	
23	9.3.3	Laurel Avenue Greenway Feasibility	Investigate and determine the feasibility of creating a greenway on Laurel Avenue that will use traffic calming techniques to discourage motor vehicle speeding.			—	—	—	—	—	—	
24	9.4.1	I-394 Communication Network	Develop an I-394 communication network.	HOT Lane/I-394 Committee; BMNA and other volunteers; hiring BIKO and Associates		\$5,000	—	\$5,000	—	—	—	
24	9.4.2	I-394: Review Plans/Monitor Progress	Monitor the proposed changes to the I-394 highway as they relate to noise and noise mitigating measures.	HOT Lane/I-394 Committee; BMNA and other volunteers; hiring BIKO and Associates		\$10,000	—	\$10,000	—	—	—	
24	9.4.3	I-394: 20 Year Plan	Work with public staff to develop a twenty-year plan to deal with the I-394 highway.	HOT Lane/I-394 Committee; BMNA and other volunteers; hiring BIKO and Associates		—	—	—	—	—	—	
				Contract with the Minneapolis Public Works Department to reduce the assessment for the Thorpe Bros. Block 5 alley paving.	Minneapolis Public Works Department	\$9,000.00	—	—	—	—	\$9,000	Residents' property tax assessments
TOTAL						\$713,000	\$47,000	\$713,511	\$45,963	—	\$400,000 to \$425,000	See above descriptions
TRANSITION/PLANNING	Prior to NRP Plan; Not a Plan Item	Transition Funds	Prior to completion of its Phase I Plan, BMNA proposed to use \$179,000 in NRP Transition Funds toward the purchase of the entire wetlands and woods Ewing Avenue site (west of Ewing Avenue to City of Minneapolis Property line between Cedar Lake Road and 22nd Street) instead of the land being developed as housing	The City of Minneapolis, through its Public Works Department, made decision to allocate \$167,000 in transition funds through a settlement agreement for purchase of only the wetland portion of the proposed housing site.		\$167,000	—	—	—	—	—	
		Planning Funds	Prior to completion of its Phase I Plan, neighborhoods were given planning money	Bryn Mawr used \$21,431 in planning and developing its Phase I Comprehensive Plan/Neighborhood Action Plan		\$21,431	—	—	—	—	—	