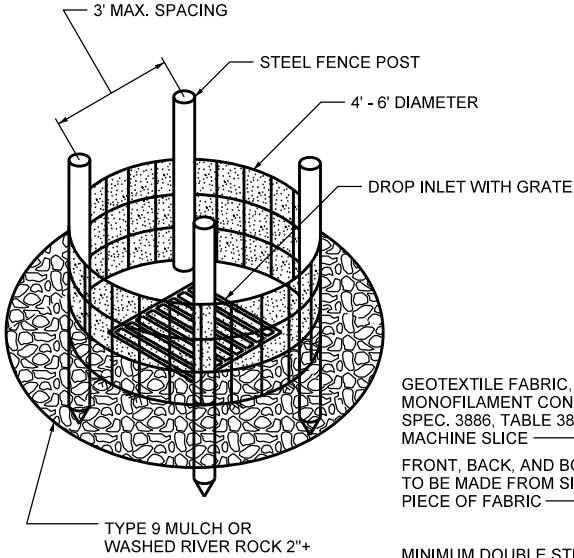
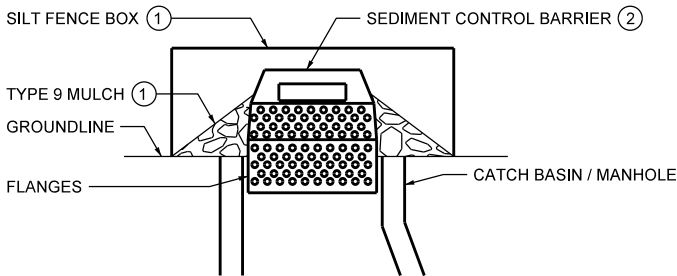
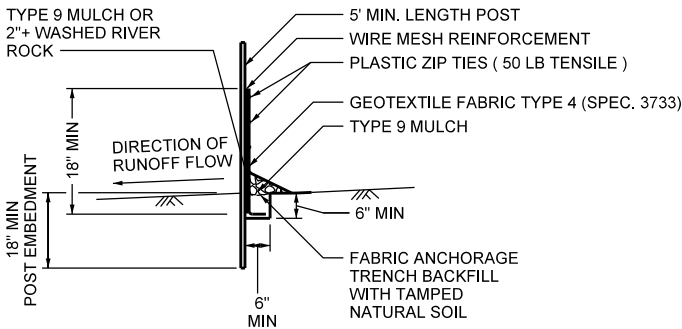
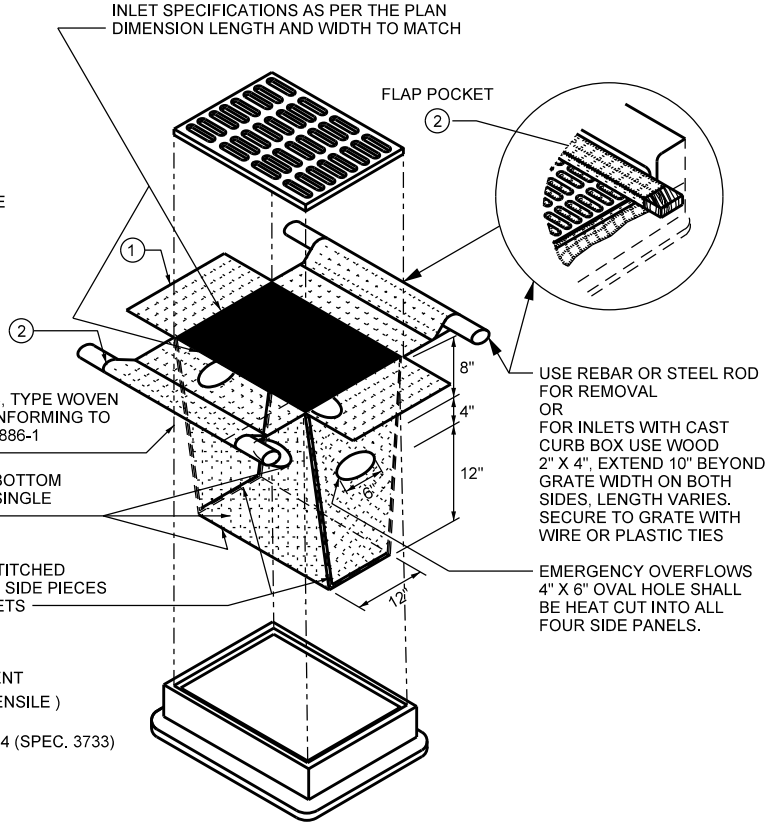


INLET PROTECTION TYPE A
 (SILT FENCE TO PROTECT DROP INLETS)
 USE WHERE INLET DRAINS AN AREA
 WITH SLOPES AT 1:3 OR LESS
 (TYPE A SPEC. 3891)



INLET PROTECTION, TYPE C (3)
 DETAIL
 (CAN BE INSTALLED IN ANY INLET TYPE
 WITH OR WITHOUT A CURB BOX)



SEDIMENT CONTROL BARRIER (2)

NOTES:
 THE SEDIMENT CONTROL BARRIER SHALL BE A METAL OR PLASTIC/POLYETHELENE RISER SIZED TO FIT INSIDE THE CATCH BASIN/MANHOLE; HAVE PERFORATIONS TO ALLOW FOR WATER INFILTRATION; HAVE AN OVERFLOW OPENING, FLANGES AND A LID/COVER.

- (1) USE INLET PROTECTION TYPE A OR TYPE 9 MULCH, AS DIRECTED BY THE ENGINEER.
- (2) PAID FOR AS SEDIMENT CONTROL BARRIER.

NOTES:
 INLET PROTECTION DEVICES SHALL BE MAINTAINED OR REPLACED AT THE DIRECTION OF THE ENGINEER.

MANUFACTURED ALTERNATIVES APPROVED AND LISTED ON THE MNDOT DEPARTMENT'S EROSION CONTROL PRODUCT ACCEPTABILITY LIST MAY BE SUBSTITUTED.

WHEN REMOVING OR MAINTAINING INLET PROTECTION, CARE SHALL BE TAKEN SO THAT THE SEDIMENT TRAPPED ON THE GEOTEXTILE FABRIC DOES NOT FALL INTO THE INLET. ANY MATERIAL FALLING INTO THE INLET SHALL BE REMOVED IMMEDIATELY.

- (1) FINISHED SIZE, INCLUDING POCKETS WHERE REQUIRED, SHALL EXTEND A MINIMUM OF 10" AROUND THE PERIMETER TO FACILITATE MAINTENANCE OR REMOVAL.
- (2) FLAP POCKETS SHALL BE LARGE ENOUGH TO ACCEPT WOOD 2" X 4".
- (3) INSTALLATION NOTES:
 DO NOT INSTALL PROTECTION IN INLETS SHALLOWER THAN 30", MEASURED FROM THE BOTTOM OF THE INLET TO THE TOP OF THE GRATE.

TRIM EXCESS FABRIC IN THE FLOW LINE TO WITHIN 3" OF THE GRATE.

THE INSTALLED BAG SHALL HAVE A MINIMUM SIDE CLEARANCE, MAXIMUM OF 4" FROM THE BOTTOM OF THE BAG. BETWEEN THE INLET WALLS AND THE BAG, MEASURED AT THE BOTTOM OF THE OVERFLOW HOLES, OF 3". WHERE NECESSARY THE CONTRACTOR SHALL CLINCH THE BAG, USING PLASTIC ZIP TIES, TO ACHIEVE THE 3" CLEARANCE. THE TIES SHALL BE PLACED AT A MAXIMUM OF 4" FROM THE BOTTOM OF THE BAG.

REFERENCES:
 MNDOT DRAFT PLATES

MINNEAPOLIS CUSTOM
 MNDOT SPEC. REF. 3891
 NOT TO SCALE



DRW: DCD DATE: 1/05
 APP: HRS DATE: 4/07

INLET PROTECTION TYPE A & C

STANDARD
 PLATE
 NO.
 SEWR-8003