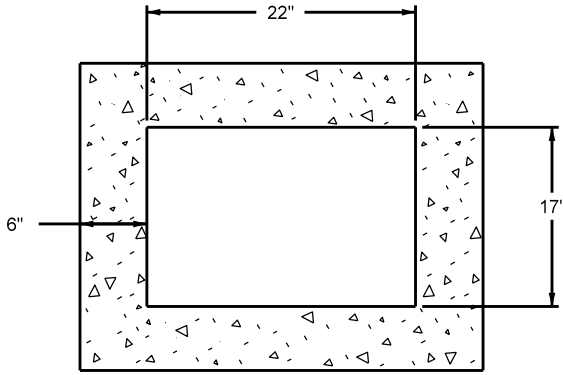
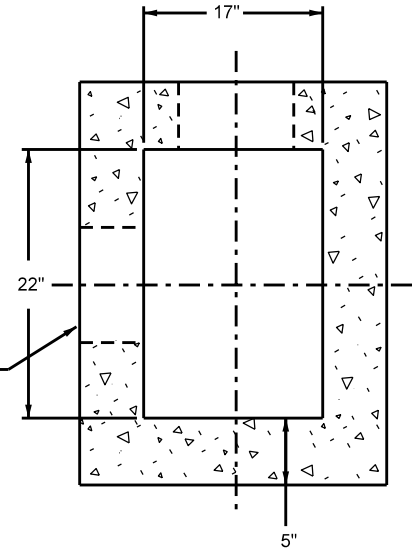


1918 POURED IN PLACE  
CATCH BASIN

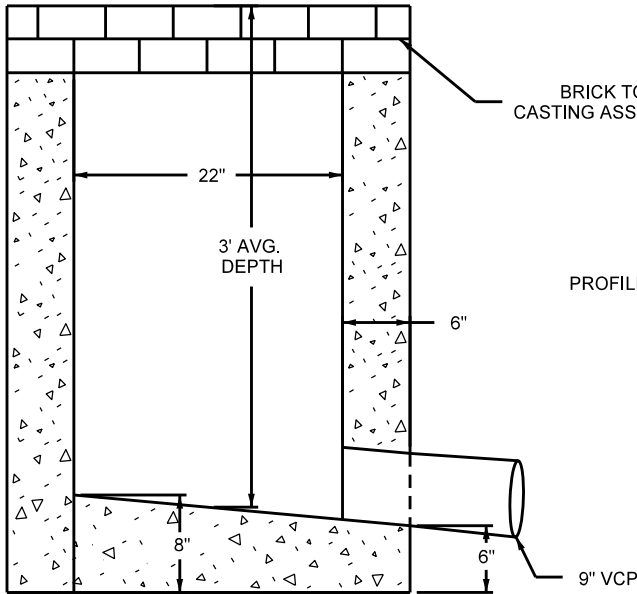


TOP VIEW

1954 PRECAST CONCRETE  
CATCH BASIN BOX



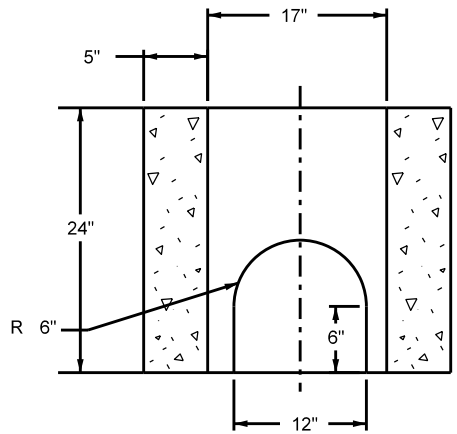
ALTERNATE LOCATION  
OF OPENING



PROFILE VIEW

BRICK TO ADJUST  
CASTING ASSEMBLY HEIGHT

WELDED WIRE REINFORCING  
FABRIC - 6" X 6" MESH  
#6 GAGE USED



NOTES: A-029 (1918)  
A-094 (1954)

REFERENCE PLATE ONLY

MINNEAPOLIS CUSTOM  
MNDOT SPEC. REF. 2506  
NOT TO SCALE



DRW: DCD

DATE: 4/10

APP: KMM

DATE: 12/14

SQUARE CATCH BASIN

STANDARD  
PLATE  
NO.  
SEWR-5020