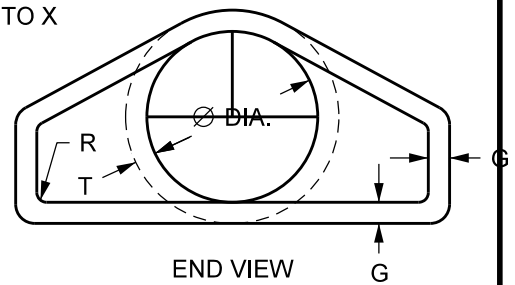


REINFORCEMENT AND DESIGN OF END SECTION "C" SHALL CONFORM TO STANDARD REINFORCED CONCRETE PIPE CLASS II, "C" WALL.

TIE THE THREE END SECTIONS (INCLUDING APRON) OF A FREE END (NO MANHOLE). SEE PLATE SEWR-3004.



DIA. (IN)	WEIGHT PER SECTION (LBS.)	SLOPE Y TO X	T (IN)	A (IN)	B (IN)	C (IN)	D (IN)	E (IN)	G (IN)	R (IN)
12	530	1 TO 2.4	2	4	24	48 7/8	72 7/8	24	2	1-1/2
15	740	1 TO 2.4	2 1/4	6	27	46	73	30	2 1/4	1-1/2
18	990	1 TO 2.3	2 1/2	9	27	46	73	36	2 1/2	1-1/2
21	1280	1 TO 2.4	2 3/4	9	36	37 1/2	73 1/2	42	2 3/4	1-1/2
24	1520	1 TO 2.5	3	9 1/2	43 1/2	30	73 1/2	48	3	1-1/2
27	1930	1 TO 2.5	3 1/4	10 1/2	49 1/2	24	73 1/2	54	3 1/4	1-1/2
30	2190	1 TO 2.5	3 1/2	12	54	19 3/4	73 3/4	60	3 1/2	1-1/2
36	4100	1 TO 2.5	4	15	63	34 3/4	97 3/4	72	4	1-1/2
42	5380	1 TO 2.5	4 1/2	21	63	35	98	78	4 1/2	1-1/2
48	6550	1 TO 2.5	5	24	72	26	98	84	5	1-1/2
54	8240	1 TO 2	5 1/2	27	65	33 1/4	98 1/4	90	5 1/2	1-1/2
60	8730	1 TO 1.9	6	35	60	39	99	96	5	1-1/2
66	10710	1 TO 1.7	6 - 1/2	30	72	27	99	102	5 1/2	1-1/2
72	12520	1 TO 1.8	7	36	78	21	99	108	6	1-1/2
78	14770	1 TO 1.8	7 - 1/2	36	90	21	111	114	6 1/2	1-1/2
84	18160	1 TO 1.6	8	36	90 1/2	21	111 1/2	120	6 1/2	1-1/2
90	20900	1 TO 1.5	8 1/2	41	87 1/2	24	111 1/2	132	6 1/2	6

FOR WALL THICKNESS LESS THAN 4", LOCATE REINFORCEMENT AT THE CENTER OF WALL. FOR WALL THICKNESS GREATER, LOCATE REINFORCEMENT WITH A MIN. OF 2" OF COVER MEASURED FROM THE OUTSIDE OF THE WALL.

MNDOT SPEC. REF. 2501, 2503 MNDOT 3100G NOT TO SCALE

	DRW: DCD	DATE: 12/02	<b>CONCRETE APRON FOR RC PIPE</b>	<b>STANDARD PLATE NO. SEWR-4014</b>
	APP: HRS	DATE: 12/06		