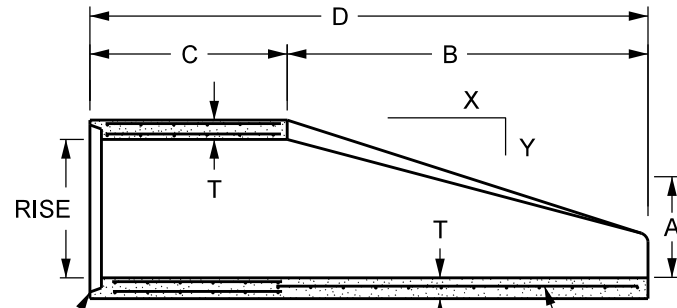
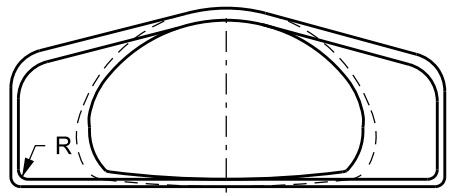


TOP VIEW



LONGITUDINAL SECTION

SLOPE = Y TO X



END VIEW

TIE THE THREE END SECTIONS (INCLUDING APRON) OF A FREE END (NO MANHOLE). SEE PLATE SEWR-3004.

REINFORCEMENT AND DESIGN OF END SECTION "C" SHALL CONFORM TO STANDARD REINFORCEMENT CONCRETE PIPE-ARCH CLASS II-A.

SIZE = DIAMETER OF ROUND PIPE WITH SAME PERIPHERY. SEE MNDOT STANDARD PLATE 3014J FOR PIPE-ARCH SHAPE DIMENSIONS AND APPLICABLE REQUIREMENTS.

SIZE	WT.	RISE	SPAN	T	A	B	C	D	E	R	SLOPE Y TO X
18	1090	13 1/2	22	2 1/2	7	27	45	72	36	2	1 TO 3
24	1760	18	28 1/2	3 1/2	8 1/2	39	33	72	48	3	1 TO 3
30	3280	22 1/2	36 1/4	4	9 1/2	50	46	96	60	3	1 TO 3
36	4330	26 5/8	43 3/4	4 1/2	11 1/8	60	36	96	72	6	1 TO 3
42	5260	31 5/16	51 1/8	4 1/2	15 13/16	60	36	96	78	6	1 TO 3
48	6380	36	58 1/2	5	21	60	36	96	84	6	1 TO 3
54	7860	40	65	5 1/2	25 1/2	60	36	96	90	6	1 TO 3
60	9520	45	73 1/2	6	31	60	36	96	96	6	1 TO 3
72	13550	54	88	7	31	60	36	99	120	6	1 TO 2
84	17965	62	102	8	28 1/2	83	19	102	144	6	1 TO 2

NOTE: DIMENSIONS ARE IN INCHES
WEIGHTS ARE IN POUNDS PER SECTION

MNDOT SPEC. REF. 2501, 2503
MNDOT 3110G
NOT TO SCALE

	DRW: DCD	DATE: 12/02	CONCRETE APRON FOR RC PIPE-ARCH	STANDARD PLATE NO. SEWR-4013
	APP: HRS	DATE: 12/06		