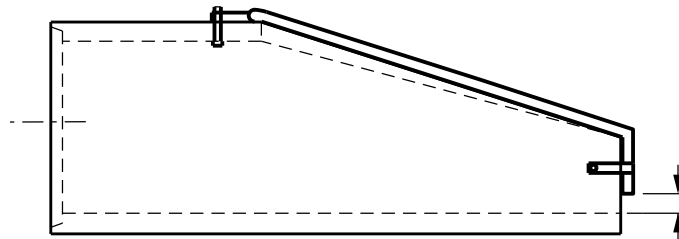


TOP VIEW



PROFILE VIEW

ARCH PIPE FLARED END TRASH GUARD					
DIA.	SPAN	STD. BAR DIA.	HEAVY DUTY BAR	H	BOLT SIZE
18	22	5/8	3/4	4	5/8
24	28 1/2	3/4	1	4	3/4
30	36 1/4	3/4	1	5	3/4
36	43 3/4	3/4	1	5	3/4
42	51 1/8	3/4	1	6	3/4
48	58 1/2	1	1 1/4	6	1
54	65	1	1 1/4	6	1
60	73 1/2	1	1 1/4	7	1
72	88	1	1 1/4	7	1

NOTES:
 DIMENSIONS ARE IN INCHES.
 HEAVY DUTY BAR CONSTRUCTION ONLY.
 2503.573 INSTALL TRASH GUARD_EA.
 CONFIGURATION AND BAR DIAMETERS MAY VARY BY MANUFACTURER.
 HOT DIP GALVANIZED PER MNDOT 3392 AND ASTM A153.

MINNEAPOLIS CUSTOM
 MNDOT SPEC. REF. 2503, 3392
 NOT TO SCALE



DRW: CXD	DATE: 4/03
APP: HRS	DATE: 12/06

RC PIPE FLARED END/APRON TRASH GUARD

STANDARD
 PLATE
 NO.
 SEWR-3010