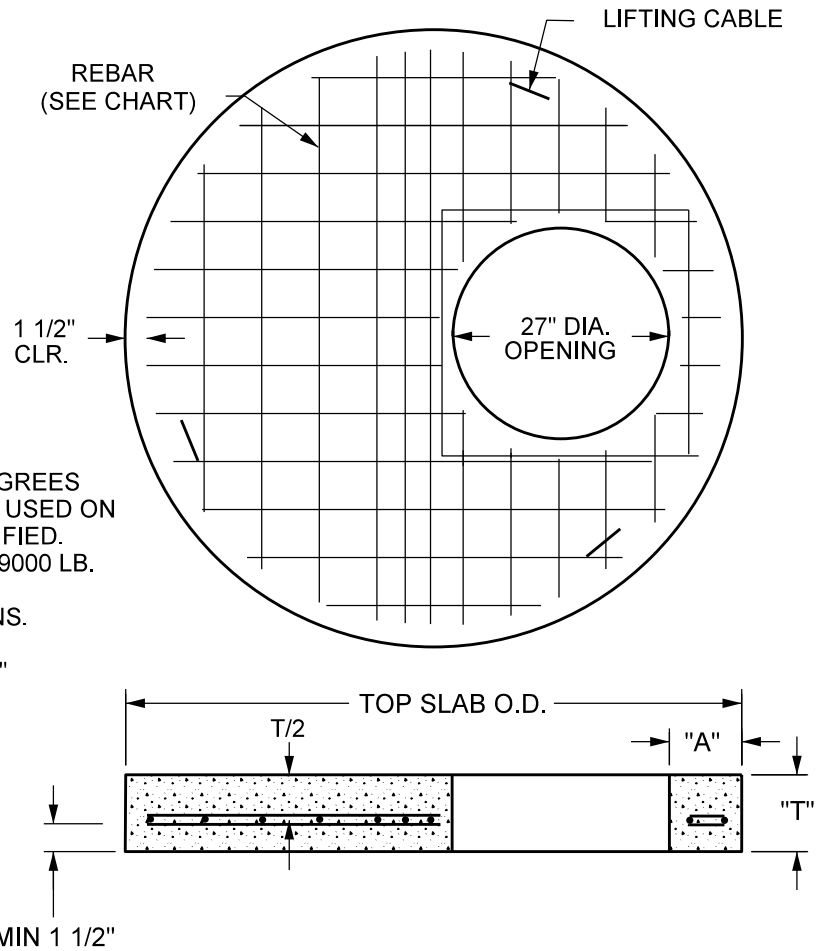


TYPE II (ROADWAY LOADING)						
MH I.D. (in.)	TOP SLAB O.D. (in.)	WEIGHT OF SLAB (lbs.)	"T" (in.)	"A" (in.)	BOTTOM BARS (in.)	TOP BARS (in.)
48	58	1140	6	6	#5 AT 6	
54	65	2000	8	6	#5 AT 6	
60	72	2525	8	7	#5 AT 4	#3 AT 6
66	79	3105	8	7	#5 AT 4	#3 AT 6
72	86	3740	8	8	#5 AT 4	#3 AT 6
78	93	4403	8	8	#5 AT 4	#3 AT 4
84	100	5140	8	9	#5 AT 4	#3 AT 4
90	106	5840	8	9	#5 AT 4	#3 AT 4
96	113	6680	8	9	#5 AT 4	#3 AT 4
102	119	7450	8	9	#5 AT 4	#3 AT 4

MPLS. STD. MH ALTERNATE

NOTES:  
 EXTRA BOTTOM BARS PLACED ADJACENT TO ACCESS HOLE.  
 MINIMUM 1 1/2" COVER ON STEEL BARS.  
 THREE LIFTING CABLES PLACED AT 120 DEGREES ON 60" COVERS AND LARGER. TWO HOOKS USED ON COVERS SMALLER THAN 60" UNLESS SPECIFIED.  
 TYPE II COVERS CAPABLE OF CARRYING A 9000 LB. WHEEL LOAD.  
 ALL REBARS ARE IN ENGLISH DESIGNATIONS. PROVIDE FULL MORTAR BED.  
 MINNEAPOLIS STANDARD TOP SLAB IS A 27" CENTER HOLE TOP SLAB.



MNDOT SPEC. REF. 2506  
 NOT TO SCALE



DRW: CXD	DATE: 2/03
APP: HRS	DATE: 12/06

27" OFFSET MANHOLE  
 TOP SLAB ALTERNATE

STANDARD  
 PLATE  
 NO.  
 SEWR-1015