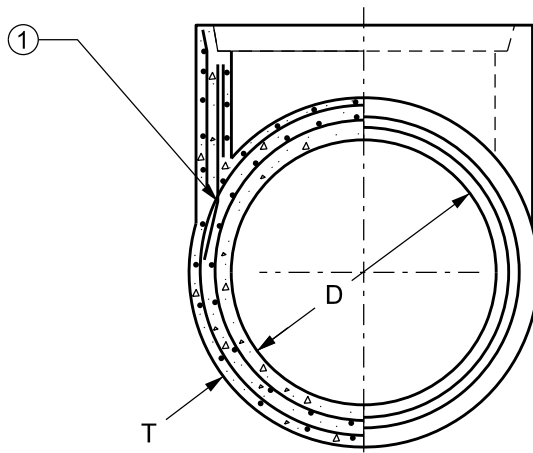
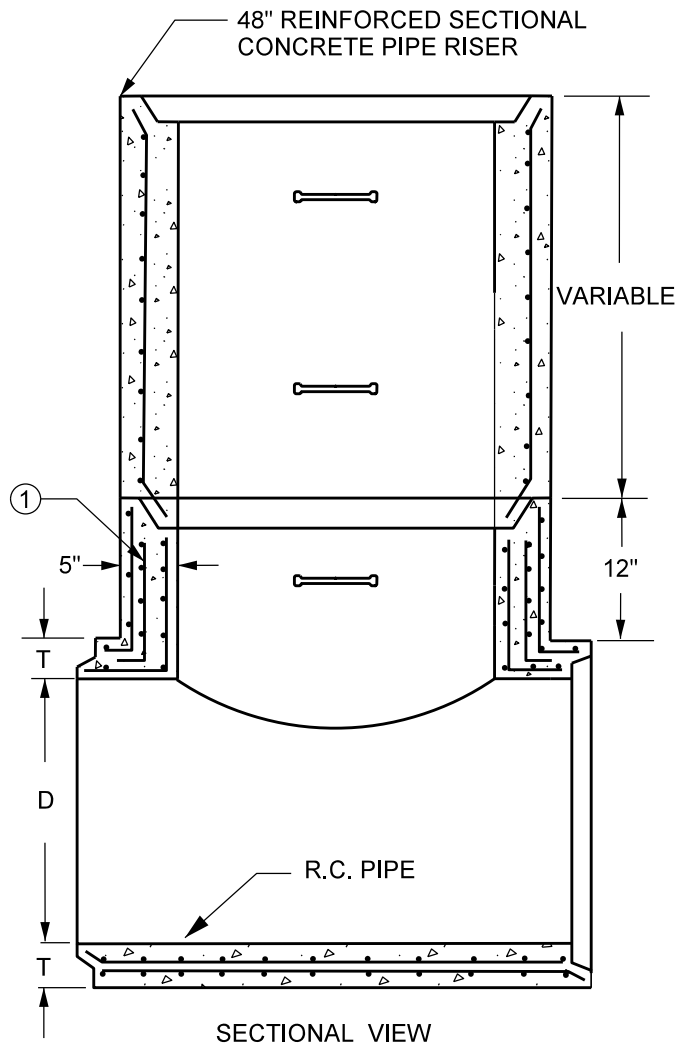


TOP VIEW



END VIEW



SECTIONAL VIEW

NOTES:

- ① WHEN PRECAST AS A UNIT. PLACE 8 EQUALLY SPACED NO. 10 X 24" BARS OR WIRE MESH OF EQUIVALENT AREA IN LOCATION SHOWN. WHEN NOT PRECAST AS A UNIT. THE EXISTING STEEL IN THE PIPE OF THE TRUNK LINE SHALL BE CUT, BENT, OVERLAPPED AND FASTENED TO THE STEEL OF THE BRANCH CONNECTION PIPE BEFORE MORTARING.

REFER TO PLANS FOR CASTINGS REQUIRED. USE PRECAST CONCRETE ADJUSTING RING WHERE NECESSARY. CASTING AND PRECAST ADJUSTING RINGS, WHEN USED, SHALL BE SET ON FULL MORTAR BEDS.

BARS ARE IN METRIC DESIGNATIONS.

TYPE C ALTERNATE SHORT CONE SECTION OR TOP SLAB ONLY.

WALL "C"	
THICKNESS OF SHELL OF PIPE "T" (in.)	DIAMETER OF PIPE "D" (in.)
5 1/4	42
5 3/4	48
6 1/4	54
6 3/4	60
7 1/4	66
7 3/4	72
8 1/4	78
8 3/4	84
9 1/4	90
9 3/4	96

MNDOT SPEC. REF. 2506
DESIGN J MNDOT 4009H
NOT TO SCALE



DRW: CXD DATE: 12/02
APP: HRS DATE: 12/06

MANHOLE TEE SECTION

STANDARD
PLATE
NO.
SEWR-1007