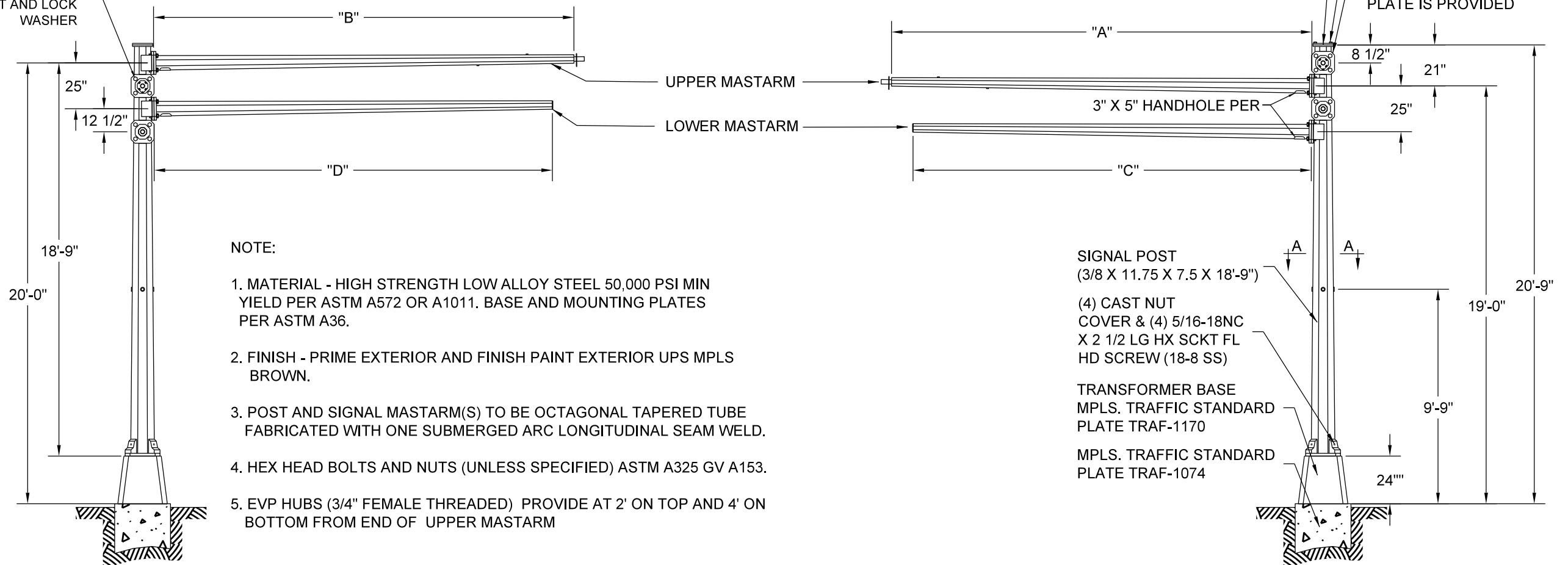


(16) 1 1/4"-7NC X 4 1/2" LG HVY HX HD BOLT AND LOCK WASHER



**NOTE:**

1. MATERIAL - HIGH STRENGTH LOW ALLOY STEEL 50,000 PSI MIN YIELD PER ASTM A572 OR A1011. BASE AND MOUNTING PLATES PER ASTM A36.
2. FINISH - PRIME EXTERIOR AND FINISH PAINT EXTERIOR UPS MPLS BROWN.
3. POST AND SIGNAL MASTARM(S) TO BE OCTAGONAL TAPERED TUBE FABRICATED WITH ONE SUBMERGED ARC LONGITUDINAL SEAM WELD.
4. HEX HEAD BOLTS AND NUTS (UNLESS SPECIFIED) ASTM A325 GV A153.
5. EVP HUBS (3/4" FEMALE THREADED) PROVIDE AT 2' ON TOP AND 4' ON BOTTOM FROM END OF UPPER MASTARM

SIGNAL POST  
(3/8 X 11.75 X 7.5 X 18'-9")

(4) CAST NUT COVER & (4) 5/16-18NC X 2 1/2 LG HX SCKT FL HD SCREW (18-8 SS)

TRANSFORMER BASE  
MPLS. TRAFFIC STANDARD  
PLATE TRAF-1170

MPLS. TRAFFIC STANDARD  
PLATE TRAF-1074

QTY	POLE NO	MASTARM				LUMINAIRE EXTENSION			LOCATION
		"A"	"B"	"C"	"D"	MTG HT	ARM LG	TYPE	
-	-	-	-	-	-	-	-	-	-

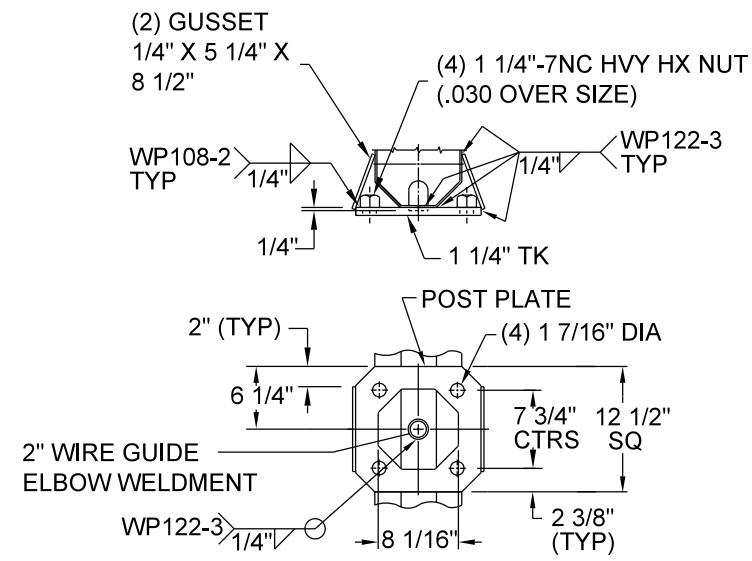
NO SCALE



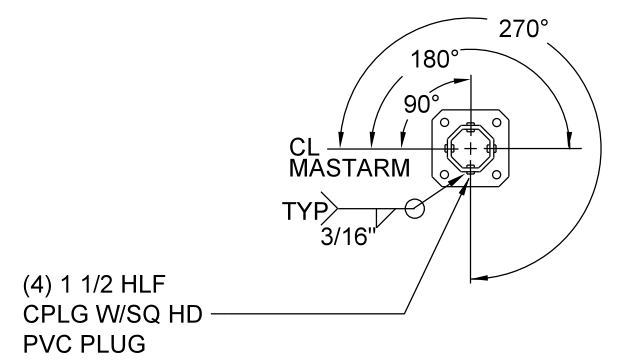
DRW: EAV DATE: 12/14/20  
APP: DRP DATE: 12/14/20

POLE - SIGNAL  
MASTARM TWIN TYPE "B"  
REFERENCE PLATE: TRAF-1074, TRAF-1170

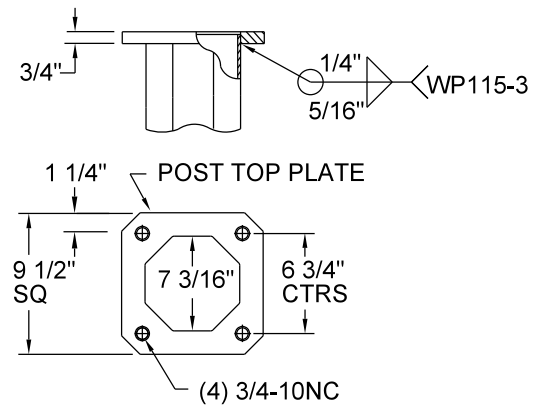
STANDARD  
PLATE  
NO.  
TRAF-1238-R2



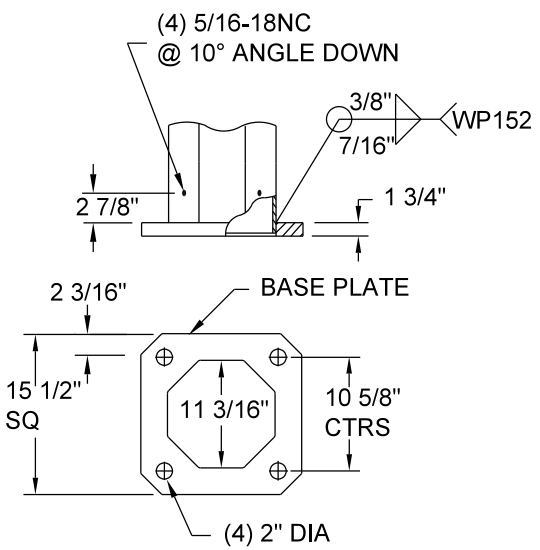
DETAIL 2 POST MASTARM MTG PLATE



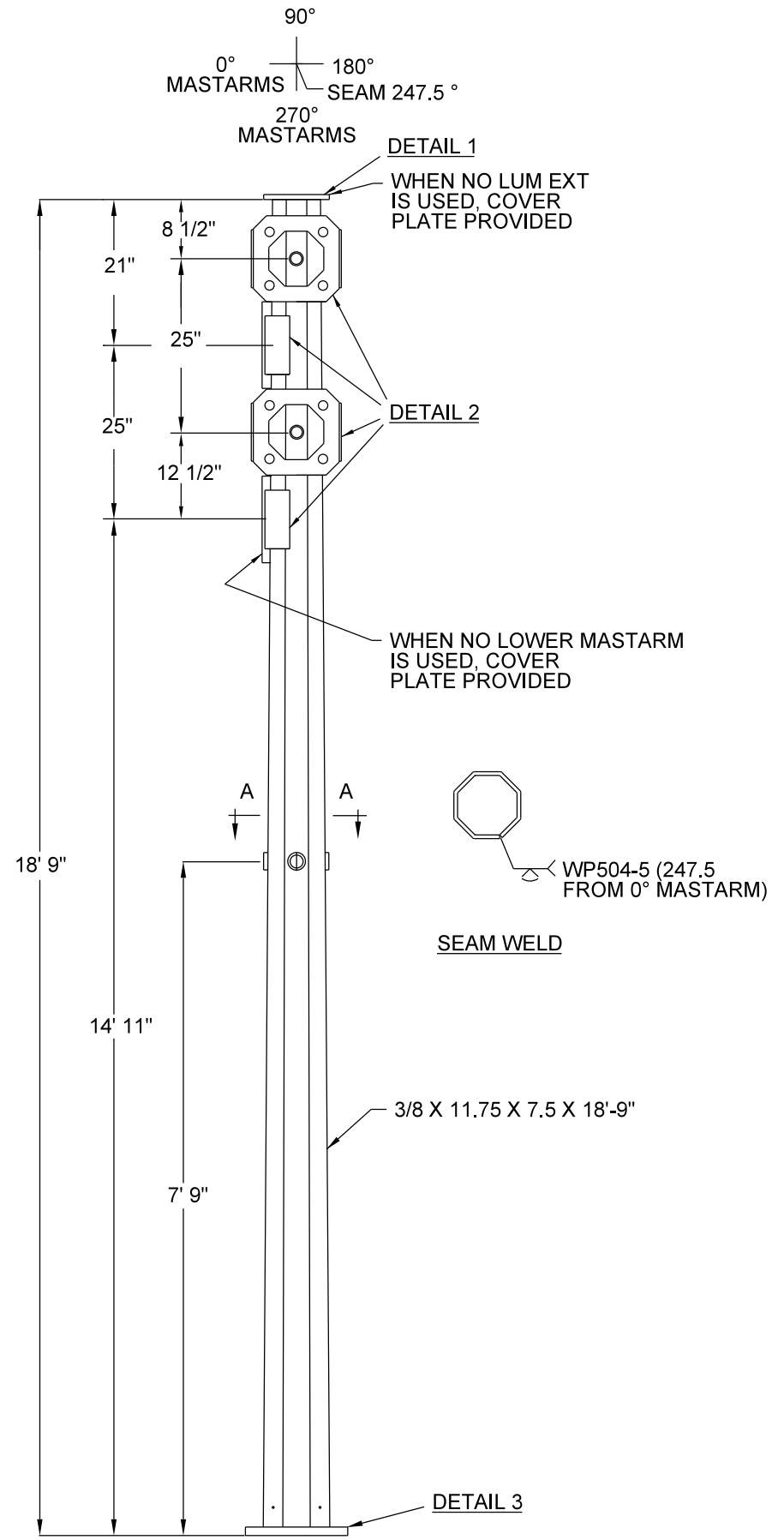
SECTION A-A  
POST SIGNAL HUB LOCATION



DETAIL 1 POST TOP PLATE



DETAIL 3 POST BASE PLATE



- NOTE:
1. MATERIAL - HIGH STRENGTH LOW ALLOY STEEL 50,000 PSI MIN YIELD PER ASTM A572 OR A1011. BSAE AND MOUNTING PLATES PER ASTM A36.
  2. FINISH - PRIME PAINT EPOXY RED OXIDE AND FINISH PAINT EXTERIOR WITH URETHANE UPS (MPLS) BROWN
  3. POST TO BE OCTAGONAL TAPERED TUBE FABRICATED WITH ONE SUBMERGED ARC LONGITUDINAL SEAM WELD WITH 100% PENETRATION 6" FROM BASE PLATE AND 60% FOR REMAINDER. GAS METAL ARC WELDING PROCESS TO BE USED FOR REMAINDER OF WELDED FABRICATION.
  4. HEX HEAD BOLTS AND NUTS (UNLESS SPECIFIED) ASTM A325 GALV A153 FOR SIZES 1/2 THRU 1 1/2 DIA AND ASTM A354BC GALV A153 FOR SIZES OVER 1 1/2 DIA.
  5. THE SIGNAL POST AND THE FOLLOWING PARTS WILL BE SHIPPED UNASSEMBLED:
    - (4) 5/16-18NC X 2 1/2 LG HX SCKT FL HD CAP SCREW (18-8 SS)
    - (4) CAST STEEL NUT COVER
    - (1) POLE TOP COVER PLATE

NO SCALE

	DRW: EAV	DATE: 12/14/20	POLE - SIGNAL MASTARM TWIN TYPE "B"	STANDARD PLATE NO. TRAF-1238-R2
	APP: DRP	DATE: 12/14/20		