

CITY OF MINNEAPOLIS

Hiawatha Campus Expansion

Minneapolis Department of Finance and Property Services

Minneapolis Department of Public Works

Minneapolis Department of Neighborhood and Community
Relations

Today's Agenda

- Welcome and Introductions, Logistics
- Goals for Today
- Project History, Current Status, Questions: Greg Goeke
- City operations at the Hiawatha Campus: Lisa Cerney
- Continued engagement and Site Development Guidelines Advisory Committee Discussion: Bob Friddle
- Questions

Water Distribution Maintenance

Facilities are beyond their useful life and need to be replaced



(commonly called
"East Side Yard")



Siting Public Facilities

A guide for the City of Minneapolis



Hiawatha Campus Expansion Project

- Guiding Principles for the City:
 - Supports the Planning and Sustainable Design Goals of the City
 - Multi-agency campuses
 - Density
 - Truck routes
 - Easily accessible, clearly identified

Hiawatha Campus



Early Planning



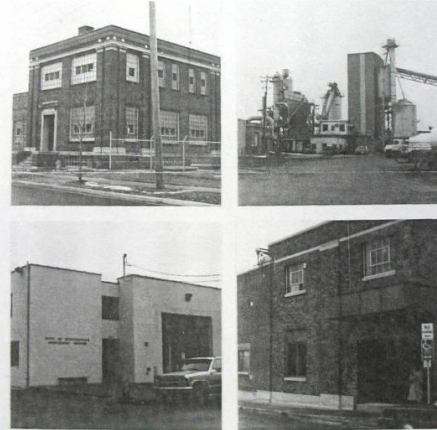
Hiawatha Maintenance Facility May 1991, when it all began...

CITY OF MINNEAPOLIS DEPARTMENT OF PUBLIC WORKS

COMPREHENSIVE FACILITY MASTER PLAN FIELD OPERATIONS FACILITIES

EXECUTIVE SUMMARY

MAY 10, 1991

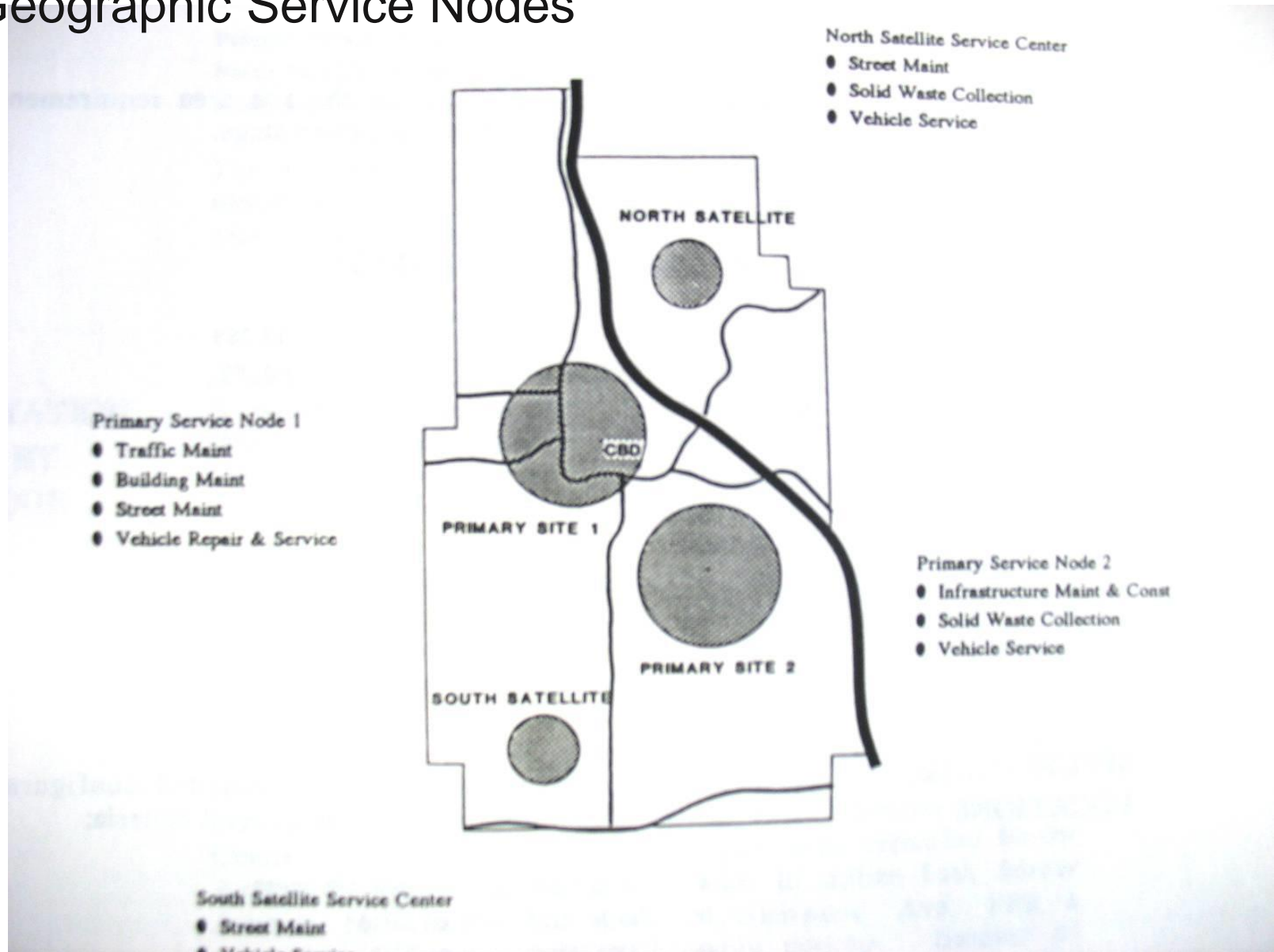


THORBECK ARCHITECTS, LTD
1409 Willow Street
Minneapolis, MN 55403
612-871-7979

in association with

GSA, LTD.
4815 Emperor Blvd., P.O. Box 12132
Research Triangle Park, NC 27709
919-941-5246

Geographic Service Nodes



2001 Council Committee Action

APRIL 6, 2001

T&PW & W&M/Budget – Your Committee, having received an update on planning for Primary Service Node 2 located at 26th and Hiawatha Av (as identified in the Public Works Comprehensive Facility Master Plan), now recommends that the proper City officers be authorized to begin discussions with Roof Depot, Inc., owners of the property at 1860 E 28th St, for possible acquisition of their property for the City facility.

Adopted. Yeas, 13; Nays none.

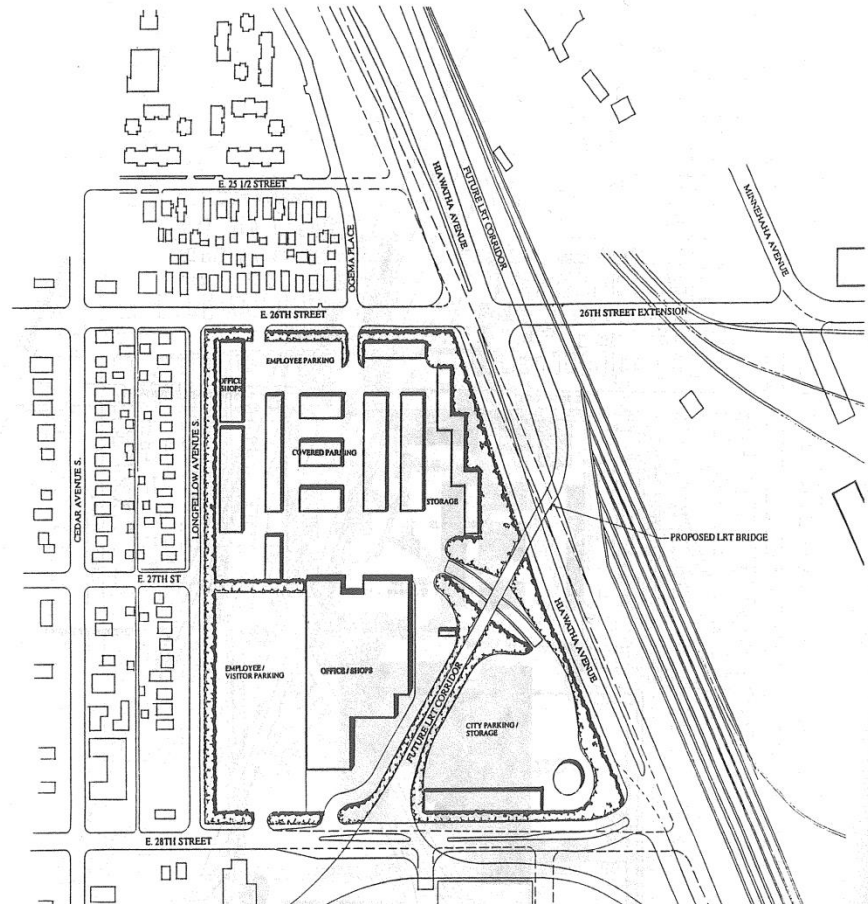
Passed April 6, 2001.

Approved April 11, 2001. S. Sayles Belton, Mayor.

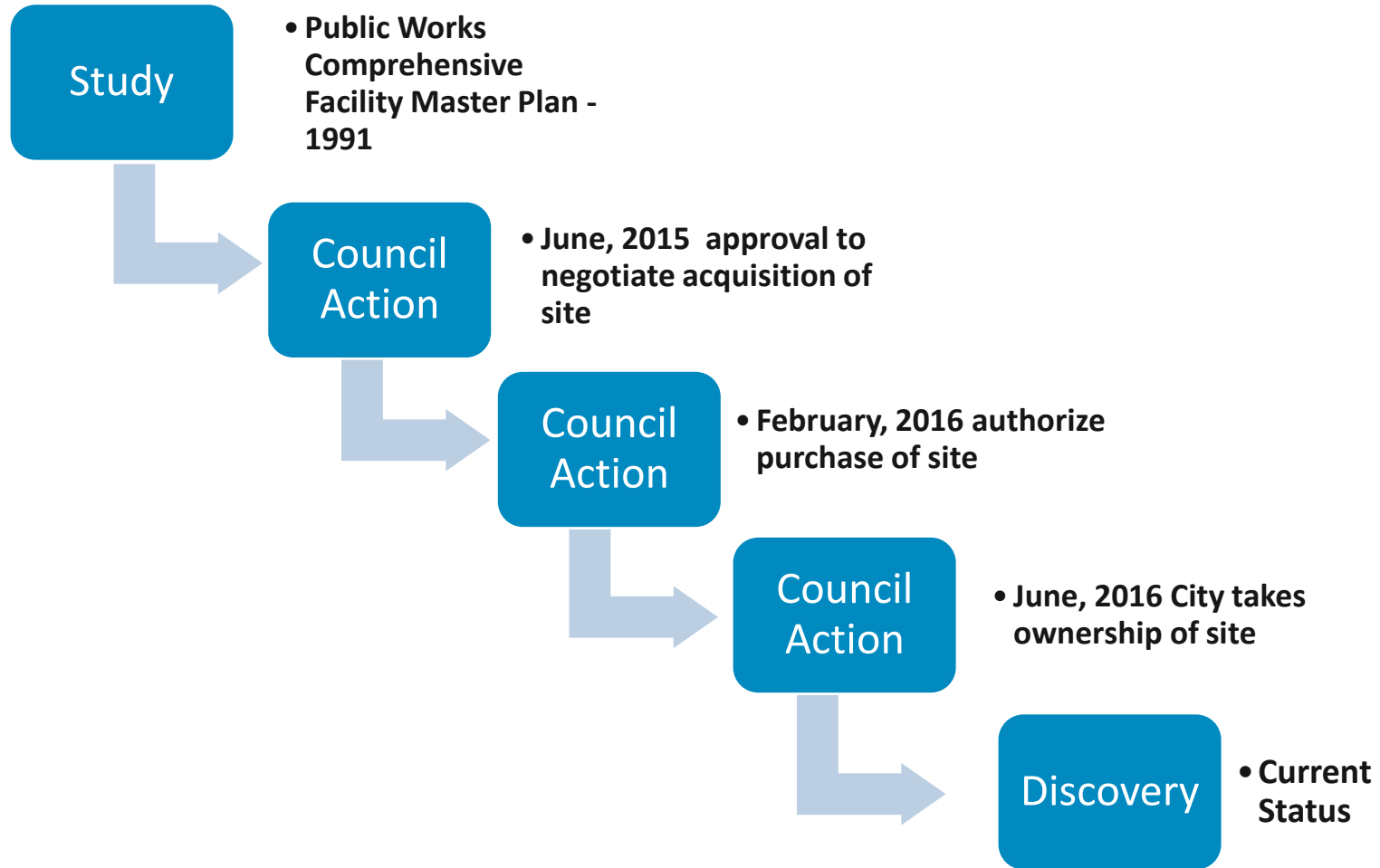
Attest: M. Keefe, City Clerk.



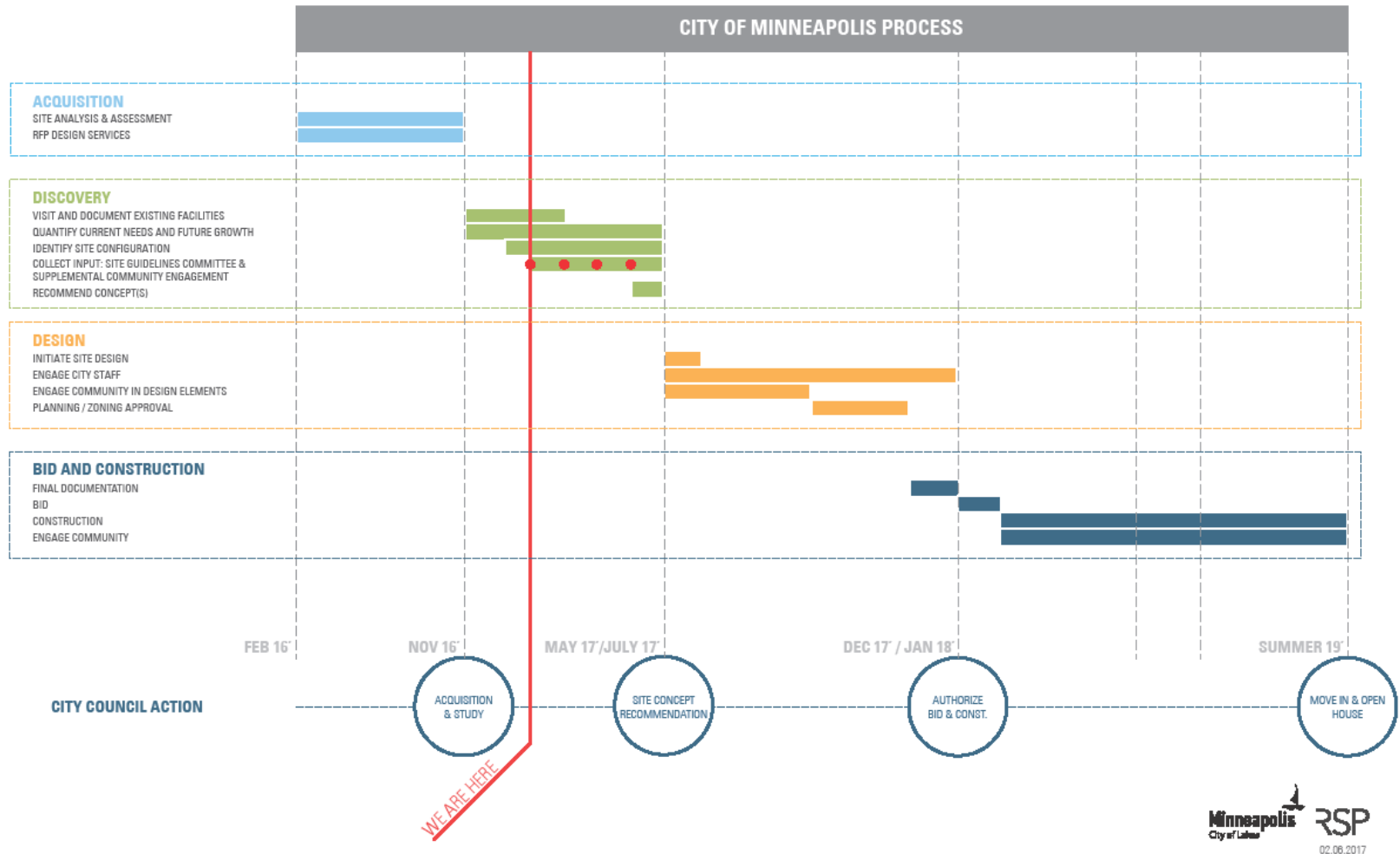
Early Planning Scheme



Project History – Current Status



Timeline



Public Works Infrastructure and Services

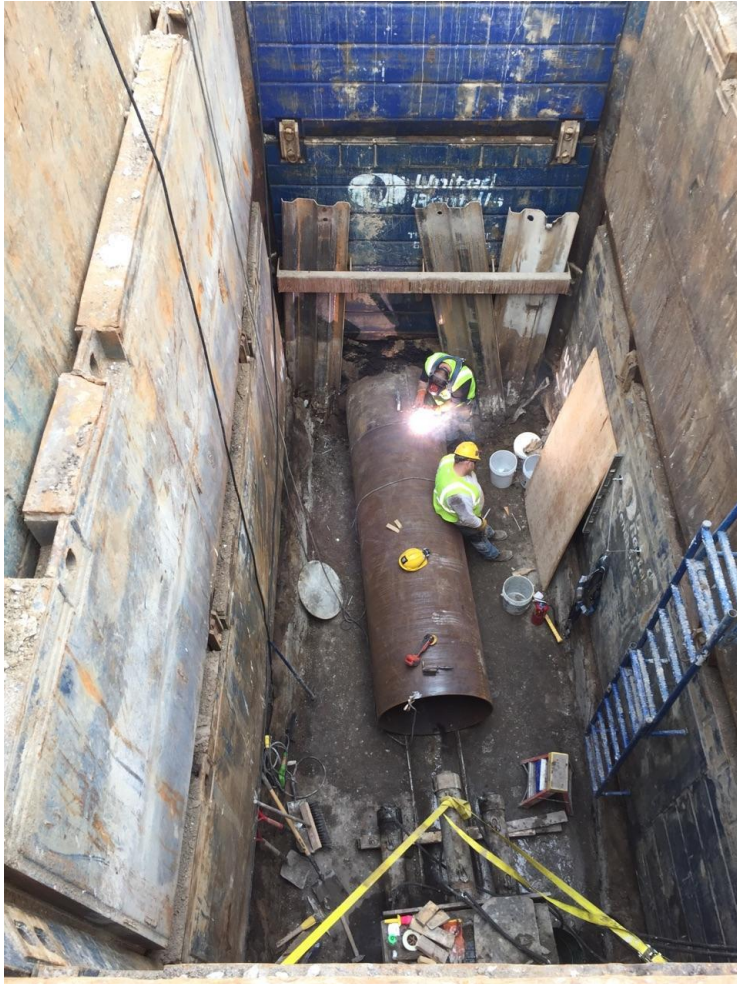
- Drinking Water
- Wastewater
- Stormwater
- Snow Plowing
- Street Construction
- Bike, Trail and Street Maintenance
- Bridge Maintenance
- Street Sweeping
- 1,500+ miles of streets and alleys
- 86 miles of bike lanes
- 28,000 street lights
- 8,000 water hydrants
- 800 street signals
- 1,000 miles of water piping
- 25 billion gallons of drinking water
- 13 stormwater ponds
- 830 miles of sanitary sewer pipes
- Trash, Recycling and Organic Collection
- Transportation Planning
- Traffic Management



Public Works Activities



Public Works Activities



Public Works Activities



Public Works Activities



City of Minneapolis
East Water Dept Early 1900's



Nick
Petrangelo



Antonio
Petrangelo



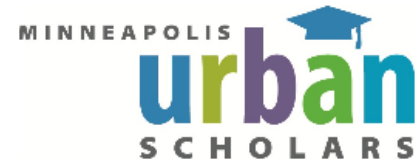
Public Works Activities



Public Works Internship Program

If you are interested in an internship with Public Works email a cover letter with your area of interest and resume to [Monique Cuff](#) or call for more information: 612-673-3514.

Public Works offers three types of internships for high school and college students. Click on the links below for more information on how to apply.



[Public Works Undergraduate Internship Program](#)



Current Phase: Discovery

- Environmental clean-up: building and site
- Co-location of Public Works Divisions: shared services, improved operational efficiencies and delivery of services
- Site internal organization and circulation for density, safe traffic and pedestrian flows
- Environmentally Sustainable building, site and operations
- Buffers to the adjacent neighborhood
- Mitigation of traffic, noise and pollution concerns
- Explore alternative development potential for areas not needed for municipal uses



Operational Needs

- Offices
- Conference/Training
- Lockers/showers
- Repair Shops
- Warehouse Stores

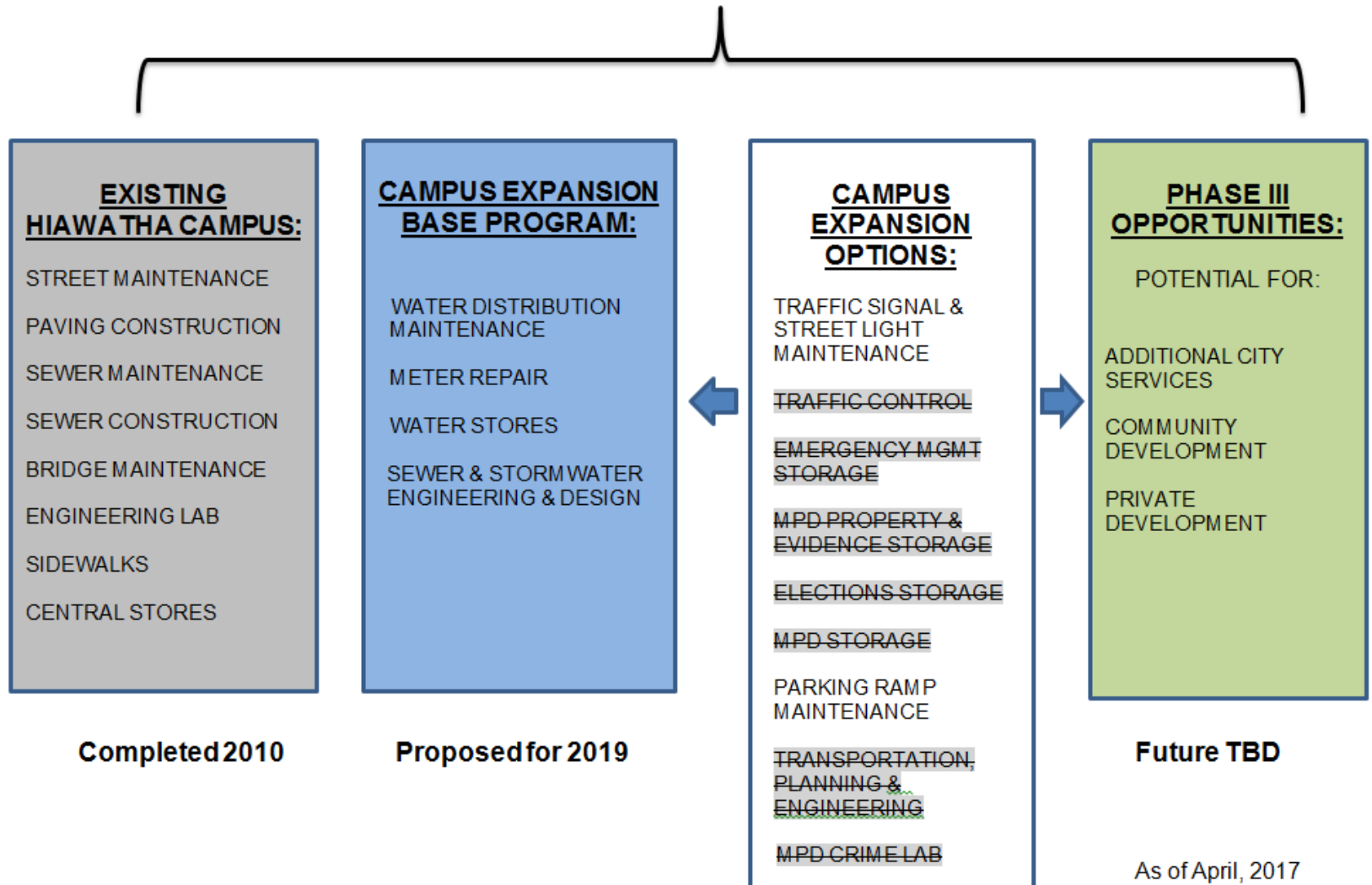


Operational Needs

- Indoor Vehicle Storage
- Vehicle Maintenance & Wash Yard Storage
- Parking (City vehicles and staff)
- Landscape/Buffer/Storm Water/Site Circulation
- Existing Operations



CURRENT PLANNING FOR HIAWATHA CAMPUS LONG TERM VISION FOR THE CITY



PUBLIC WORKS FACILITIES



Engaging the Community



Site Development Guidelines Advisory Committee



Lake Street Station renovation by Julie Snow Architects

Guidelines for Transit Oriented Development at the Hi Lake Center

Hiawatha-Lake Advisory Committee report

July 20, 2011



Site Development Guidelines Advisory Committee

- Goal: Work with City and Design team to understand neighborhood desires, provide perspective, observations, input and recommendations; assist with development of site plan options, to be reviewed with community and forwarded for formal consideration and action by the City Council



Site Development Guidelines Advisory Committee

- Representation of diverse community groups and stakeholders
- Commitment to three to four two hour meetings – bi-weekly in April – July



Site Development Guidelines Advisory Committee

Charter/Engagement Framework and Roles

1. The Site Development Guidelines Advisory Committee (GAC) is an advisory body to the City of Minneapolis that will provide input and recommendations throughout the study process for the City's Hiawatha Campus Expansion project.
2. GAC will provide community input to the Hiawatha Campus Expansion Project that has been established by action of the Minneapolis City Council. The City has purchased 7.63 acres of property at 2717 Longfellow Avenue and 1860 28th Street East, adjacent to the existing Hiawatha Public Works Campus, and located in the East Phillips neighborhood.
3. City staff and the design team have been directed to work with community members to identify redevelopment or leasing scenarios for any portion of the property not required for municipal operations
4. The GAC process is expected to require approximately three bi-weekly two hour design meetings in April and May, resulting in one or more proposed site development concepts for the property, to be followed by a community meeting prior to formal consideration and action by the City Council.
5. The City and its design team (RSP) will work directly with the GAC throughout the study process to discuss and promote involvement in all aspects of the study process, including review of alternative solutions and scenarios. Accessible, accurate and consistent two way information will be a base-line assumption throughout this process.
6. The GAC members are respected as thoughtful and informed stakeholders in the neighborhood that will contribute important information, perspectives and observations to the study process. GAC members will participate in a spirit of openness and honesty. The GAC will operate through respectful dialogue, fact-based decision making, and strive for consensus whenever possible. The GAC process will be open and transparent.
7. The GAC will also serve as strategic partners in the community engagement process, and work to



Site Development Guidelines Advisory Committee

Application and selection process

Hiawatha Campus Expansion Site Guidelines Committee Interest Form

Date: _____

Name: _____

Address: _____

Contact Information (e-mail or phone): _____

Stakeholder group you are representing (you may check more than one)

- ☐ East Phillips Neighborhood Organization Representative
- ☐ American Indian Community Member
- ☐ Little Earth Community Member
- ☐ Latino Community Member
- ☐ East African Community Member
- ☐ Resident
- ☐ Business Community Member
- ☐ Other (please describe) _____

Please tell us about any experience in community planning, land use, small area plans, development, etc.

Please tell us what opportunities this project has for you or the community



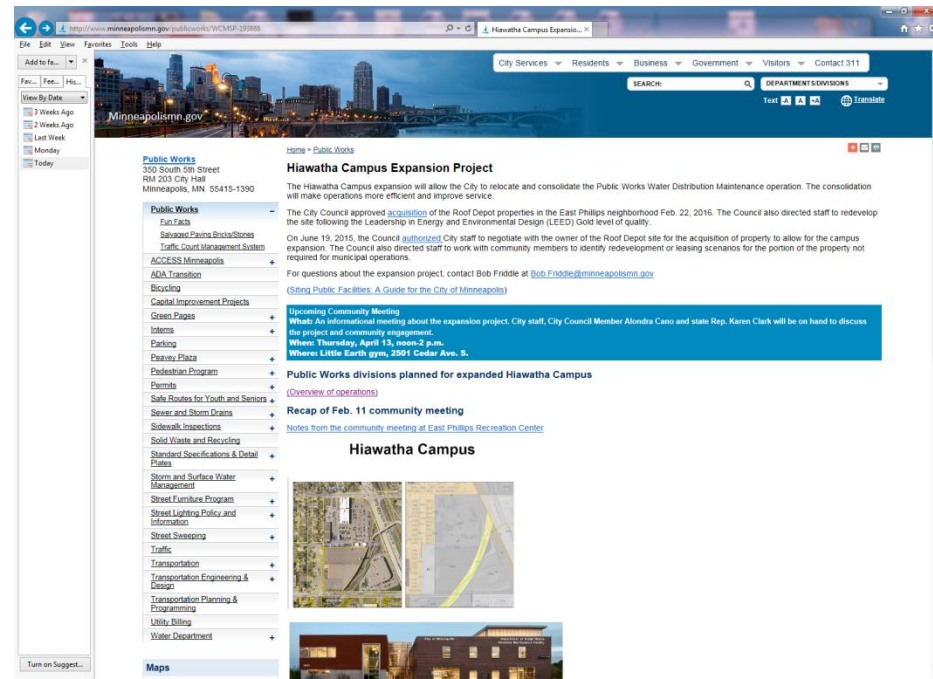
Questions?



Wrap Up

- Summary of today's meeting will be on the website <http://www.minneapolismn.gov/publicworks/HiawathaCampusExpansion>
- Additional Application Forms available
- Don't forget if you want e-mail updates to print your information as neatly as possible
- Email questions to: bob.friddle@minneapolismn.gov

Thank you for your participation!



Sustainable Design Opportunities

LEED GOLD STANDARD AS BASIS OF DESIGN

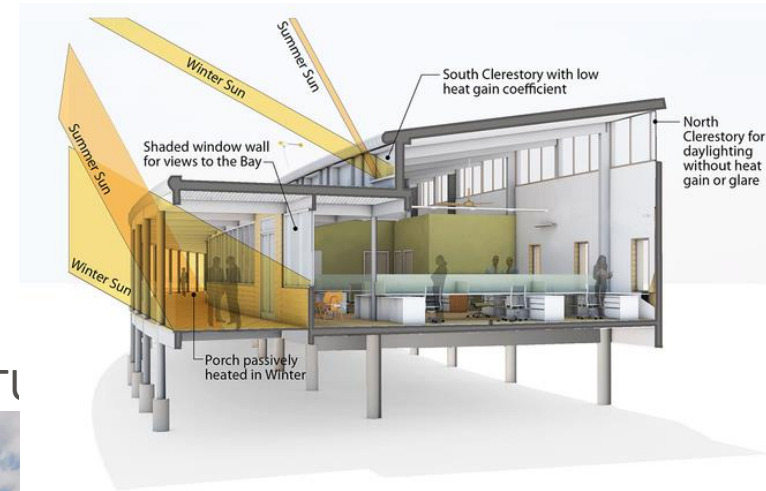
- Storm Water: Capture & Reuse
- Rain Gardens: Slow & Filter Runoff
- Pollinator Beds: Native Plants Reduce Maintenance & Support Native Species
- Recycled Materials & Re-use
- Electric Vehicle Charging



Sustainable Design Opportunities

THE BASICS

- Excellent Thermal Insulation
- Eliminate Thermal Bridging
- Coordinated Passive Solar Components (i.e. windows, sun shading, etc.)



RE-USE BUILDING MATERIAL FROM EXISTING STRUCTURE

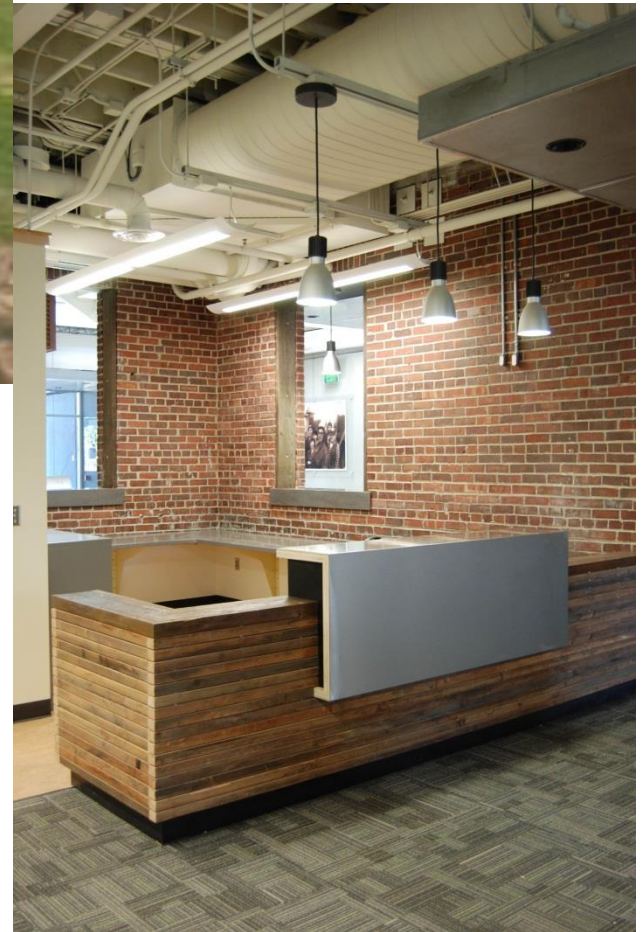


SOLAR READY



Sustainable Design Opportunities

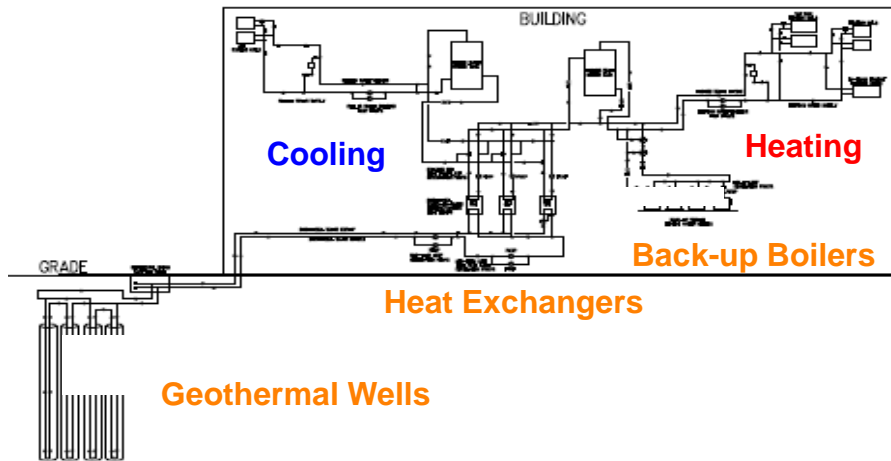
Reclaim urban resources



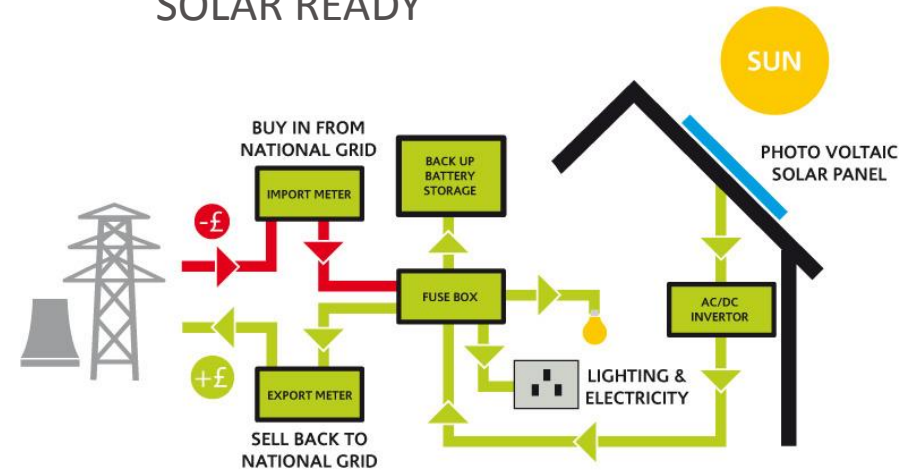
Sustainable Design Opportunities

SYSTEMS

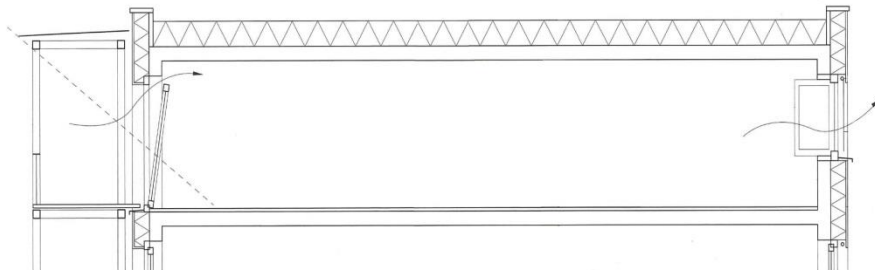
GEO THERMAL



SOLAR READY



PASSIVE VENTILATION



REUSE OF STORMWATER

