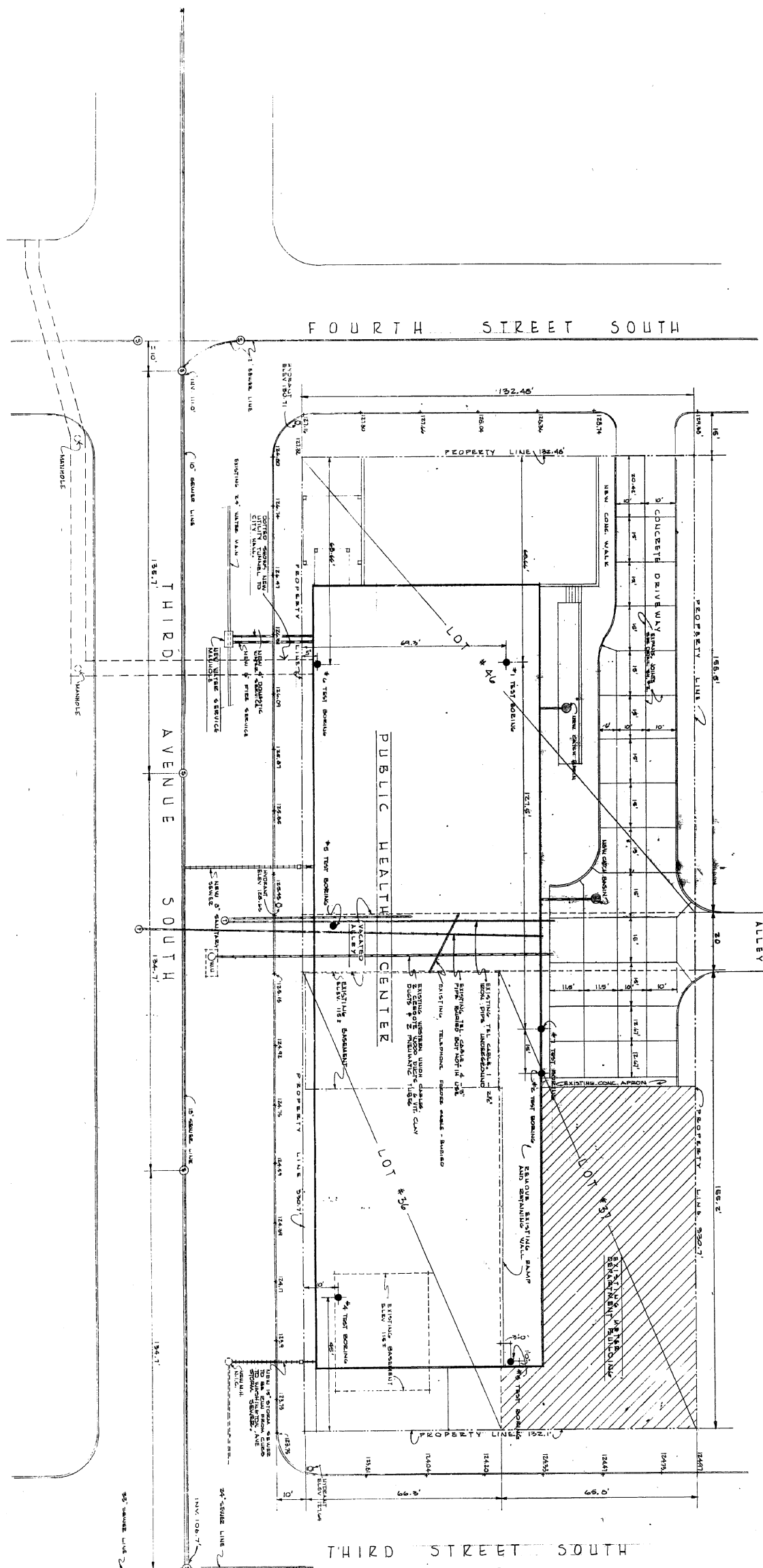
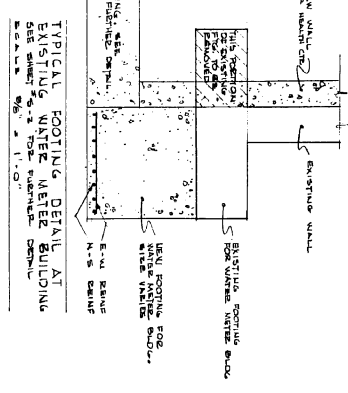


# LOG OF TEST BORINGS

DEPTH (FEET)	SOIL DESCRIPTION	REMARKS
0	GRAVELLY SAND	
1	GRAVELLY SAND	
2	GRAVELLY SAND	
3	GRAVELLY SAND	
4	GRAVELLY SAND	
5	GRAVELLY SAND	
6	GRAVELLY SAND	
7	GRAVELLY SAND	
8	GRAVELLY SAND	
9	GRAVELLY SAND	
10	GRAVELLY SAND	
11	GRAVELLY SAND	
12	GRAVELLY SAND	
13	GRAVELLY SAND	
14	GRAVELLY SAND	
15	GRAVELLY SAND	
16	GRAVELLY SAND	
17	GRAVELLY SAND	
18	GRAVELLY SAND	
19	GRAVELLY SAND	
20	GRAVELLY SAND	
21	GRAVELLY SAND	
22	GRAVELLY SAND	
23	GRAVELLY SAND	
24	GRAVELLY SAND	
25	GRAVELLY SAND	
26	GRAVELLY SAND	
27	GRAVELLY SAND	
28	GRAVELLY SAND	
29	GRAVELLY SAND	
30	GRAVELLY SAND	

NOTE: LINO WATER ENTERED THE BORINGS AT THE TIME THEY WERE MADE.  
 2. AVAILABLE GEOLOGICAL DATA INDICATES THAT THE OBSTRUCTION ENCOUNTERED IS BEDROCK.  
 3. AVERAGE DEPTH OF FROST BELOW SURFACE OF GROUND IS 3'6".  
 4. SOIL BEARING VALUE OF THE SOILS IS 2000 POUNDS PER SQUARE INCH.



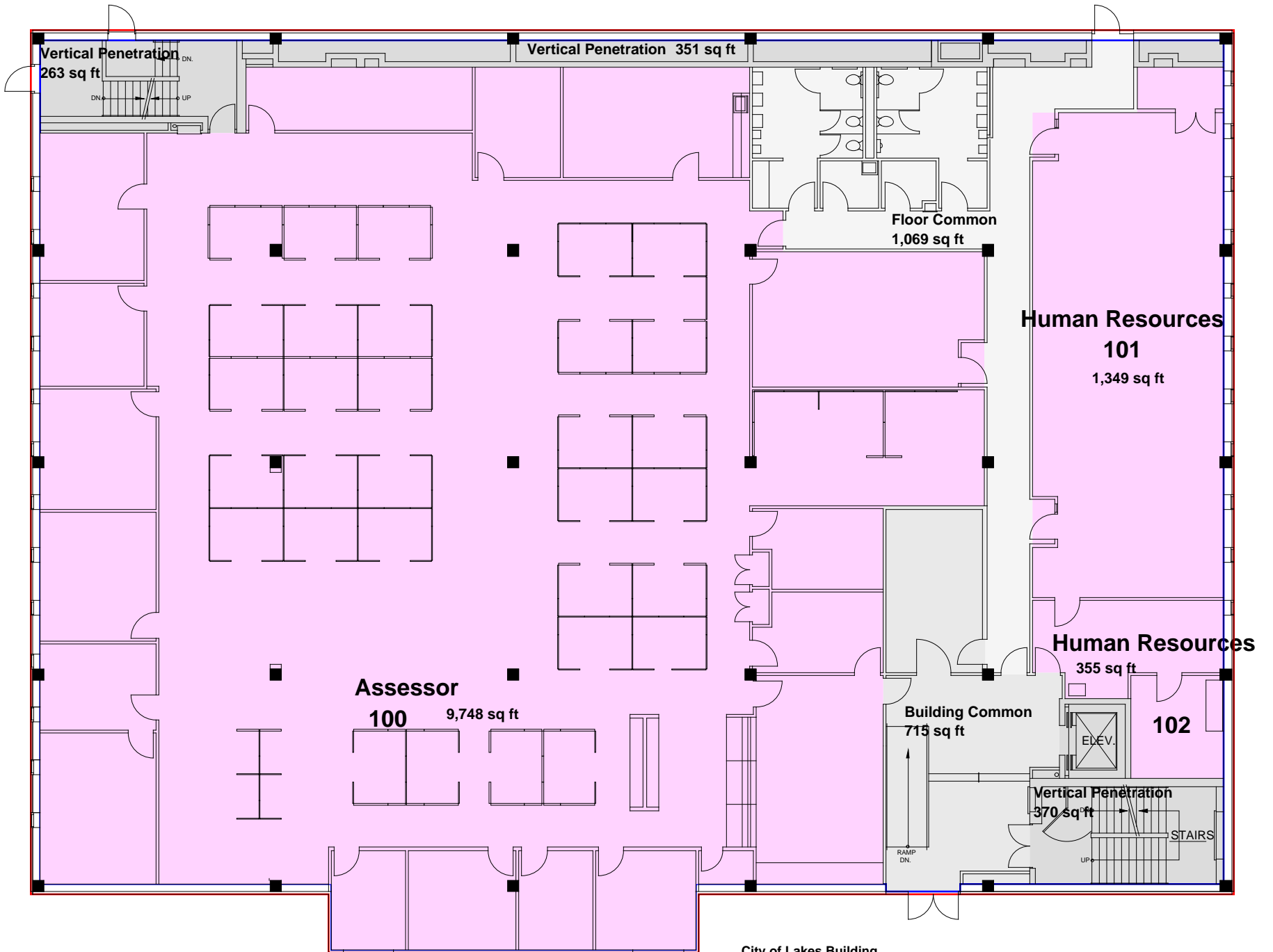
REVISIONS  
 NO. DATE  
 1 2/28/58  
 GENERAL REVISIONS

NOTE: ALL UNDERGROUND UTILITIES AS SHOWN ON THE PLAN ARE FROM THE CITY OF MINNEAPOLIS. THE CITY ENGINEER HAS REVIEWED THE PLAN AND HAS APPROVED THE LOCATION AND DEPTH OF ALL UTILITIES SHOWN THEREON. TELEPHONE AND UTILITY LOCATIONS SHOWN ON THE PLAN ARE FROM THE CITY OF MINNEAPOLIS.

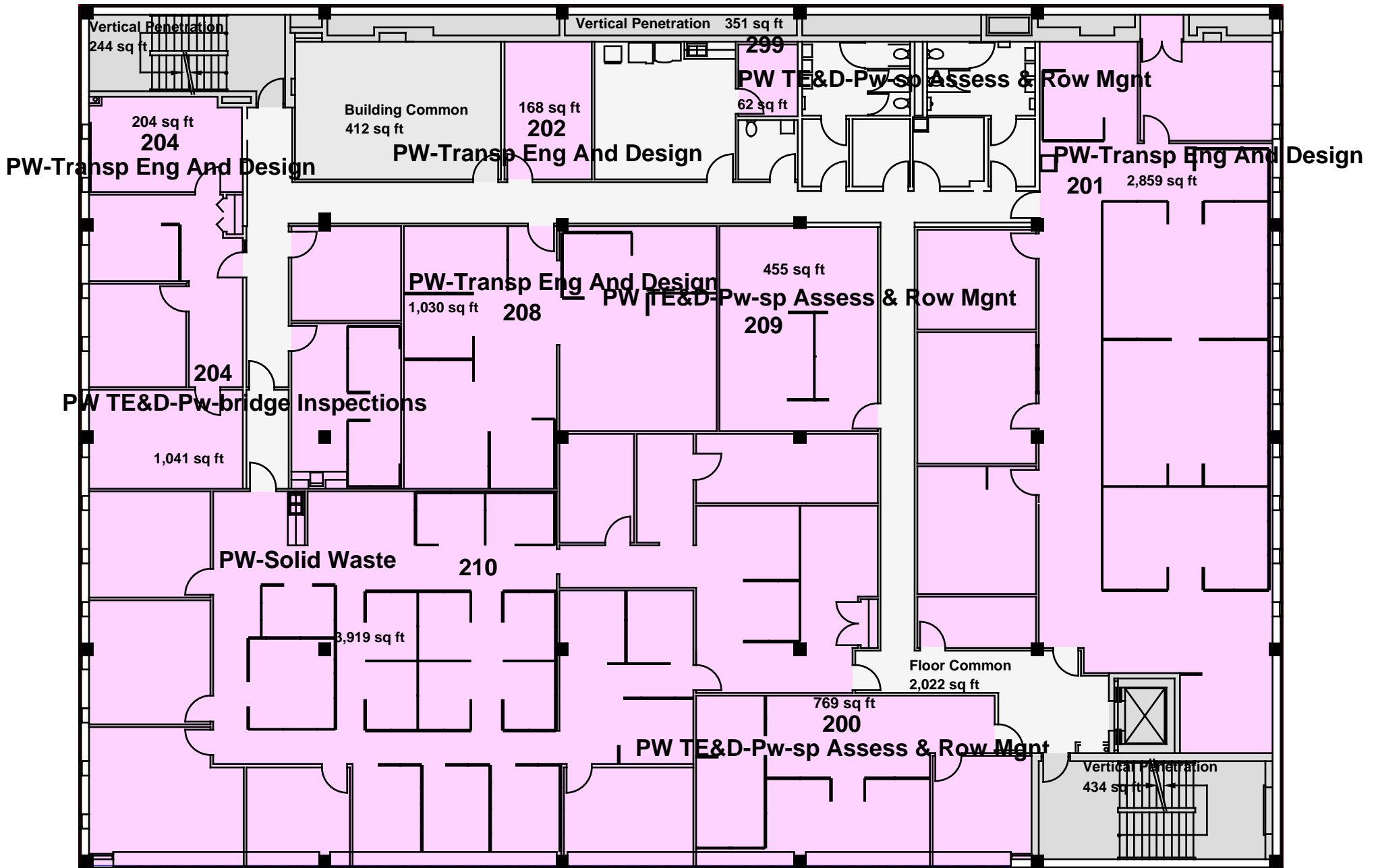
**PUBLIC HEALTH CENTER**

DATE: 2-2-58  
 DRAWN: [Name]  
 CHECKED: [Name]  
 PROJECT NUMBER: 54-26  
 SHEET NUMBER: 2-A

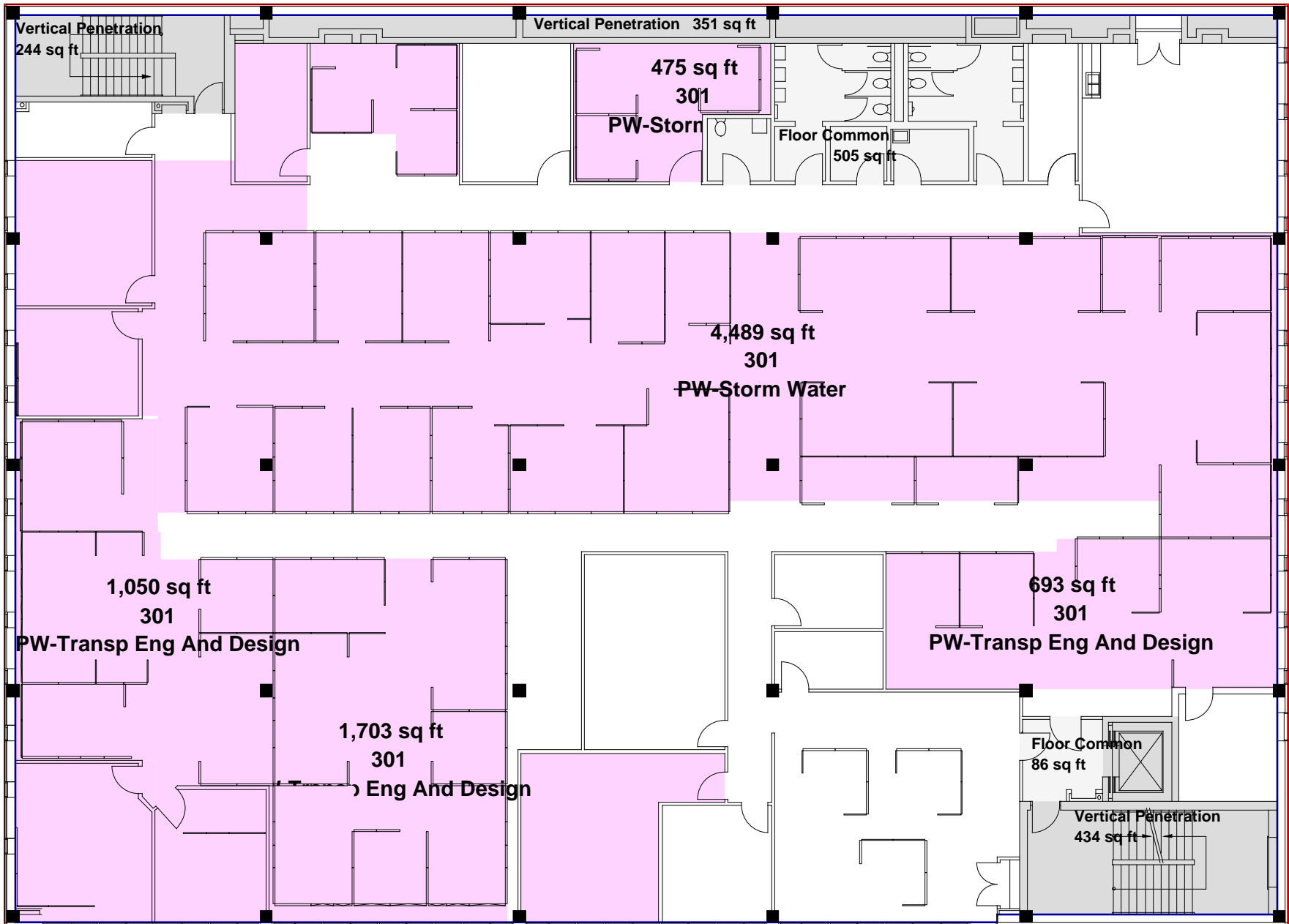
**THORSHOW & CERNY**  
 ARCHITECTS & ENGINEERS  
 100 N. 1ST ST.  
 MINNEAPOLIS, MINN.



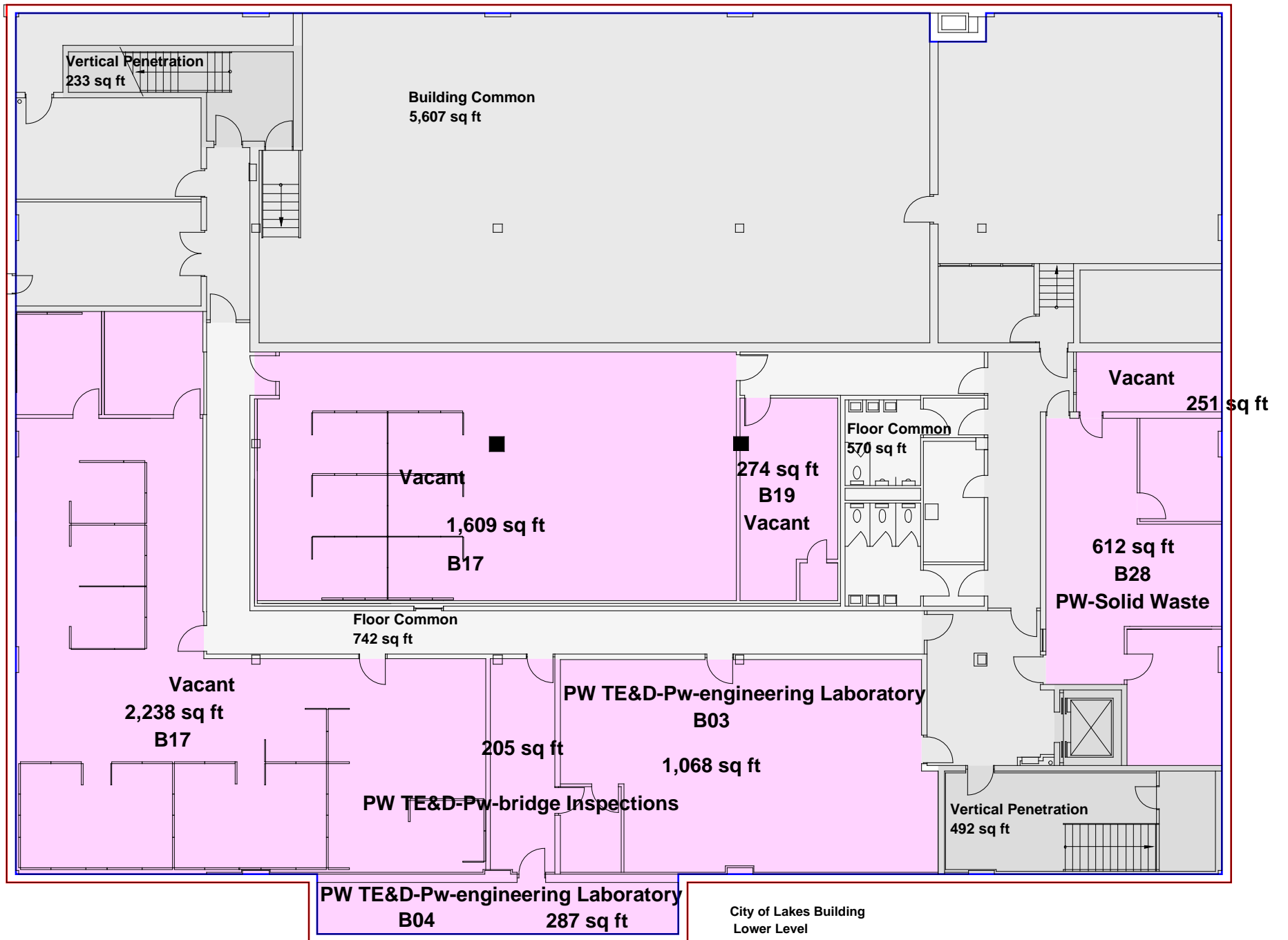
City of Lakes Building  
1st Floor



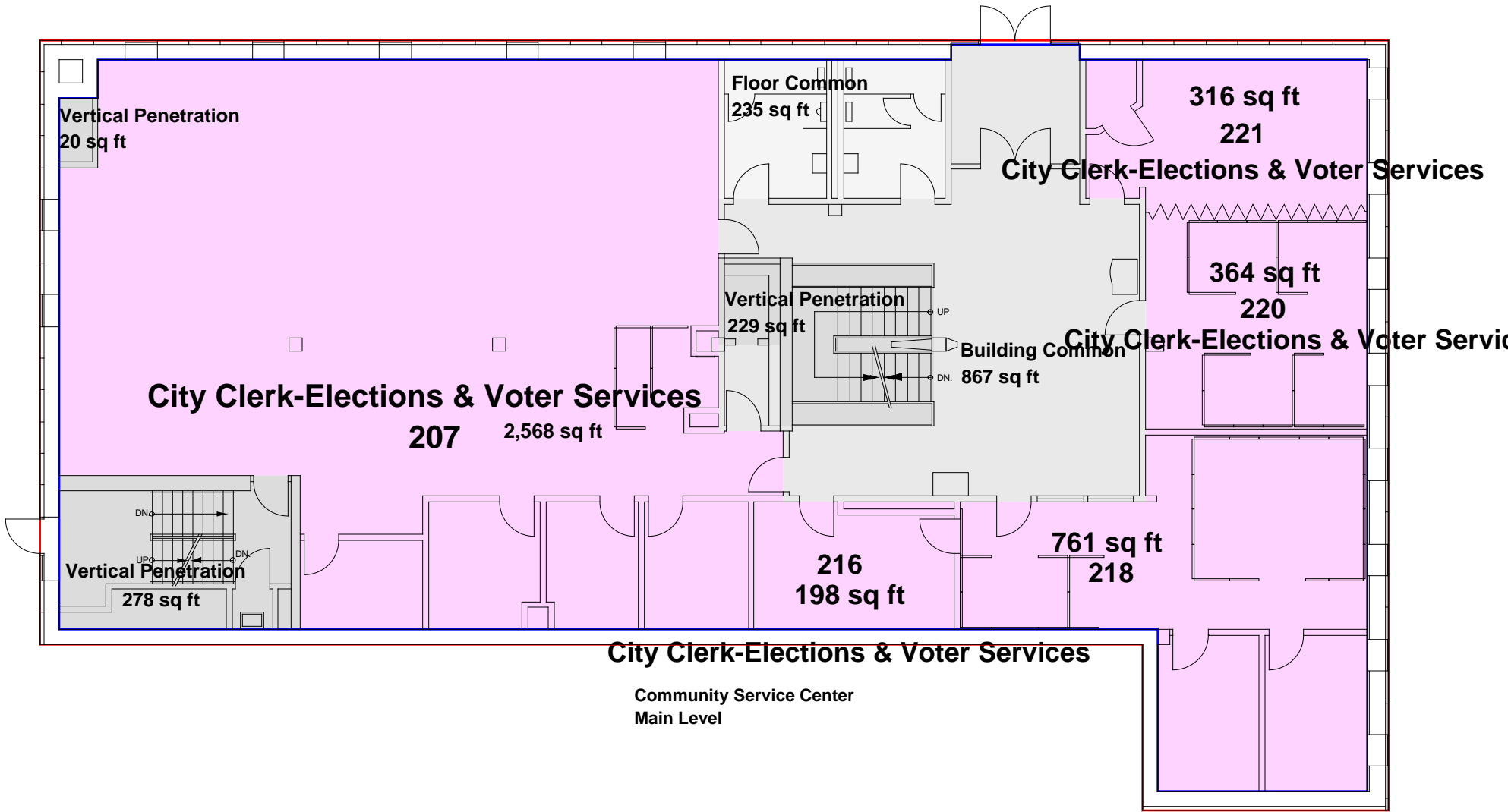
City of Lakes Building  
2nd Floor

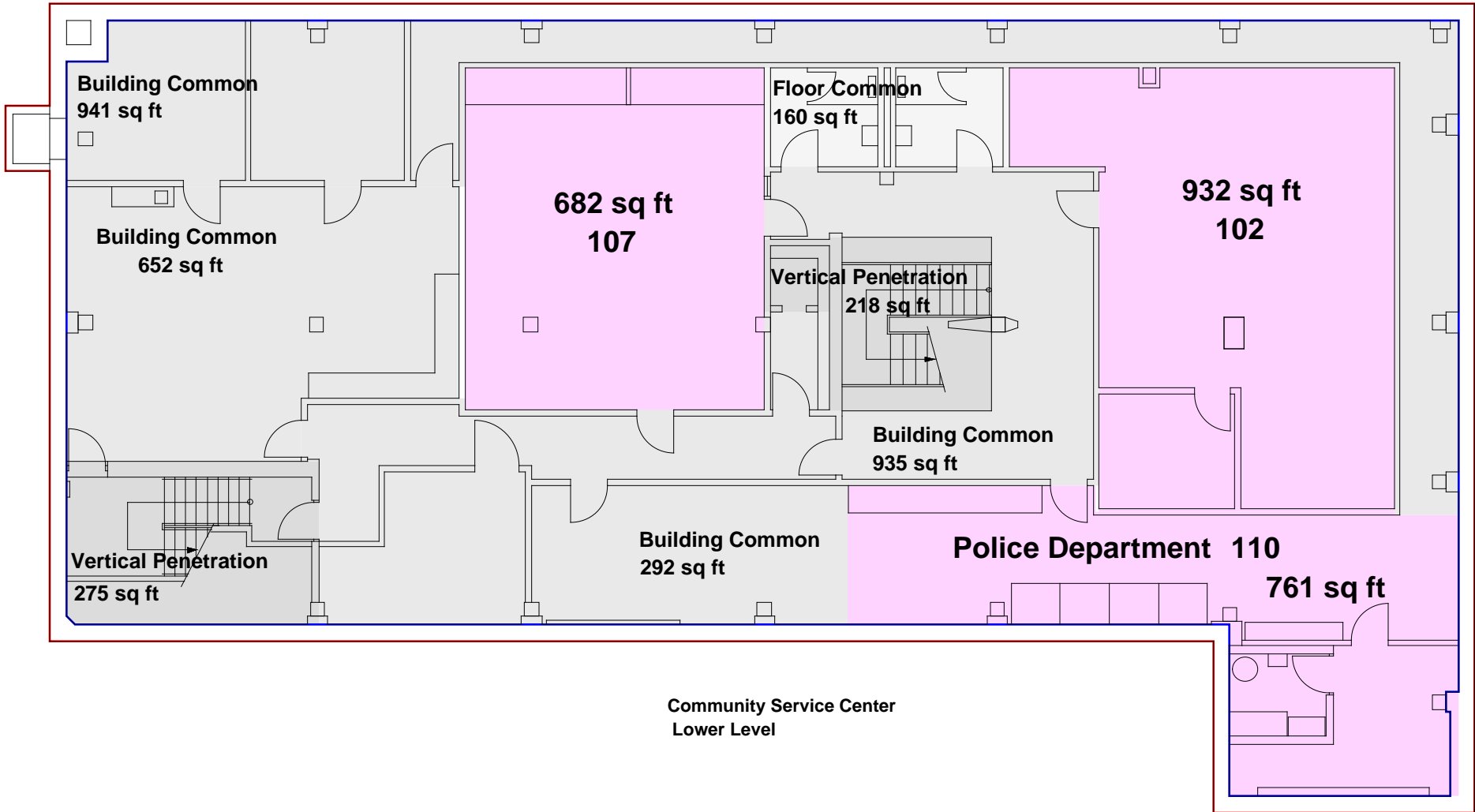


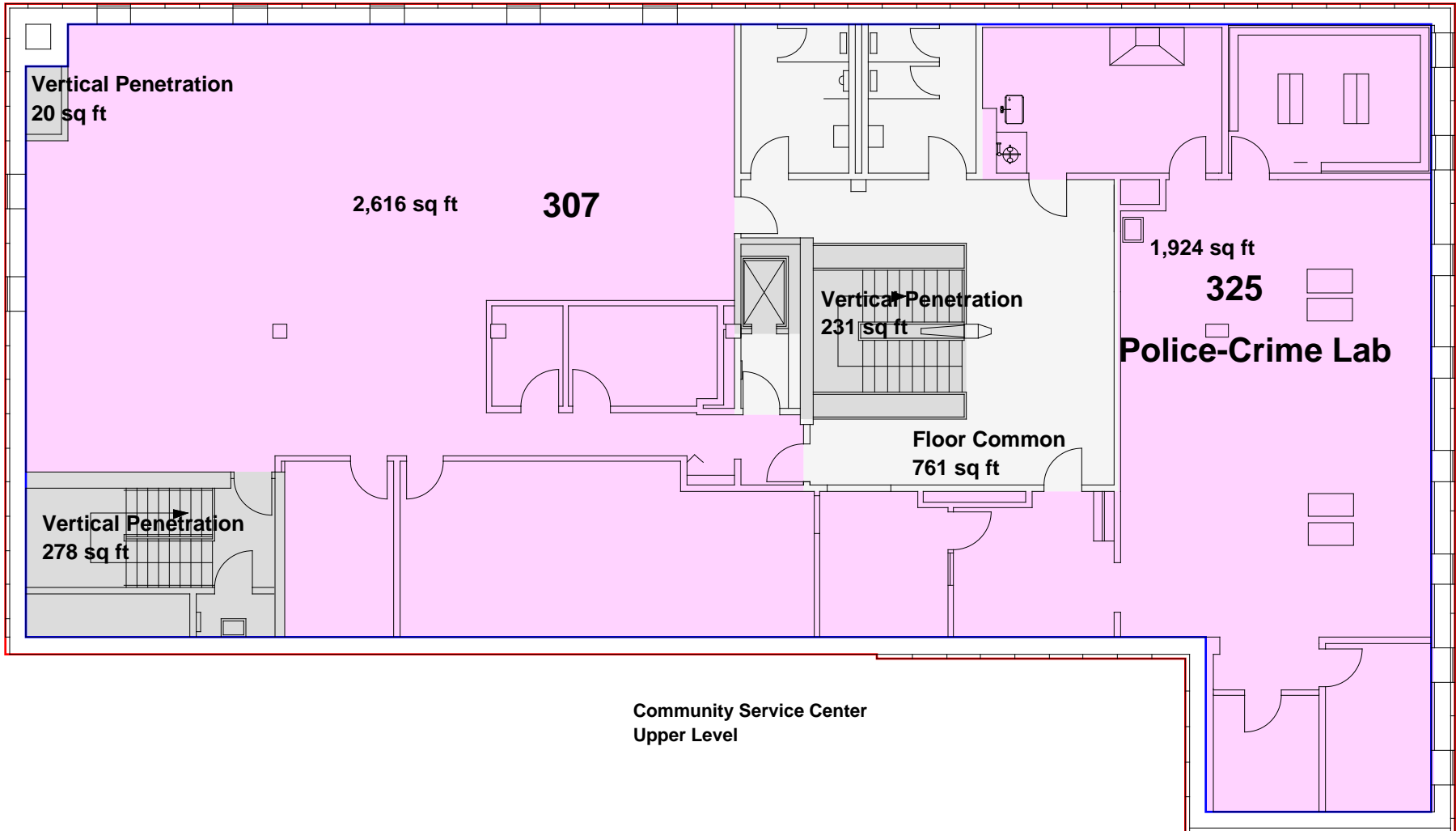
City of Lakes Building  
3rd Floor



City of Lakes Building  
Lower Level



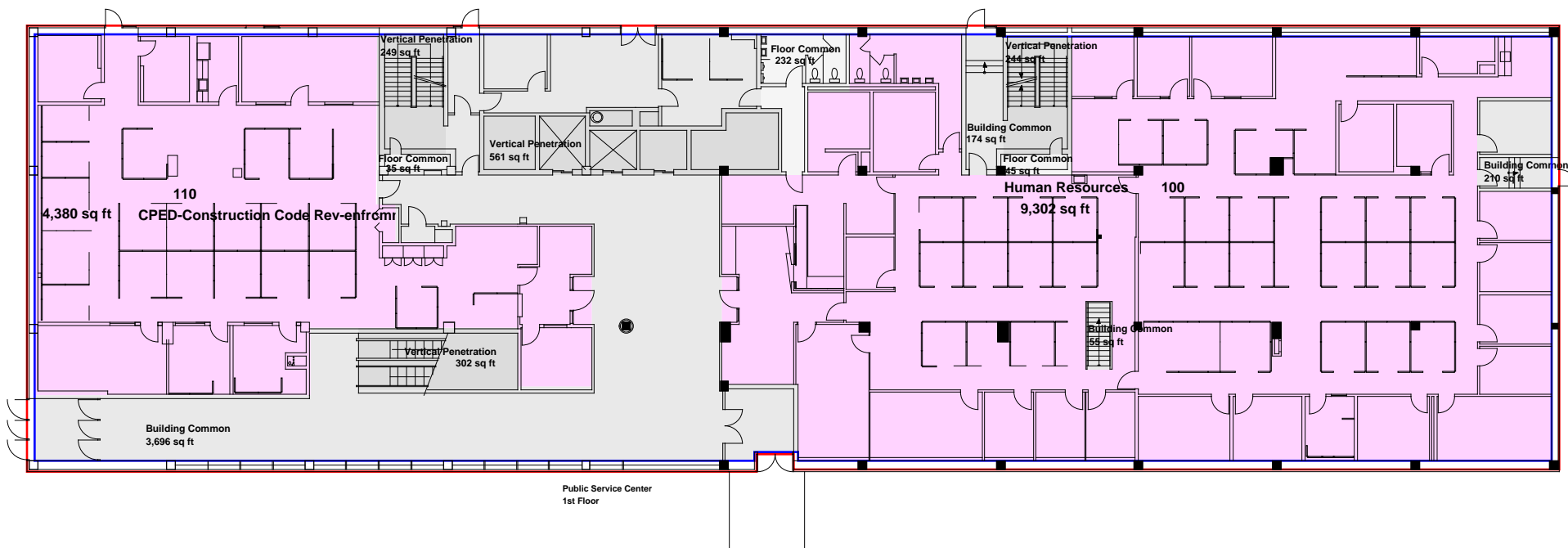


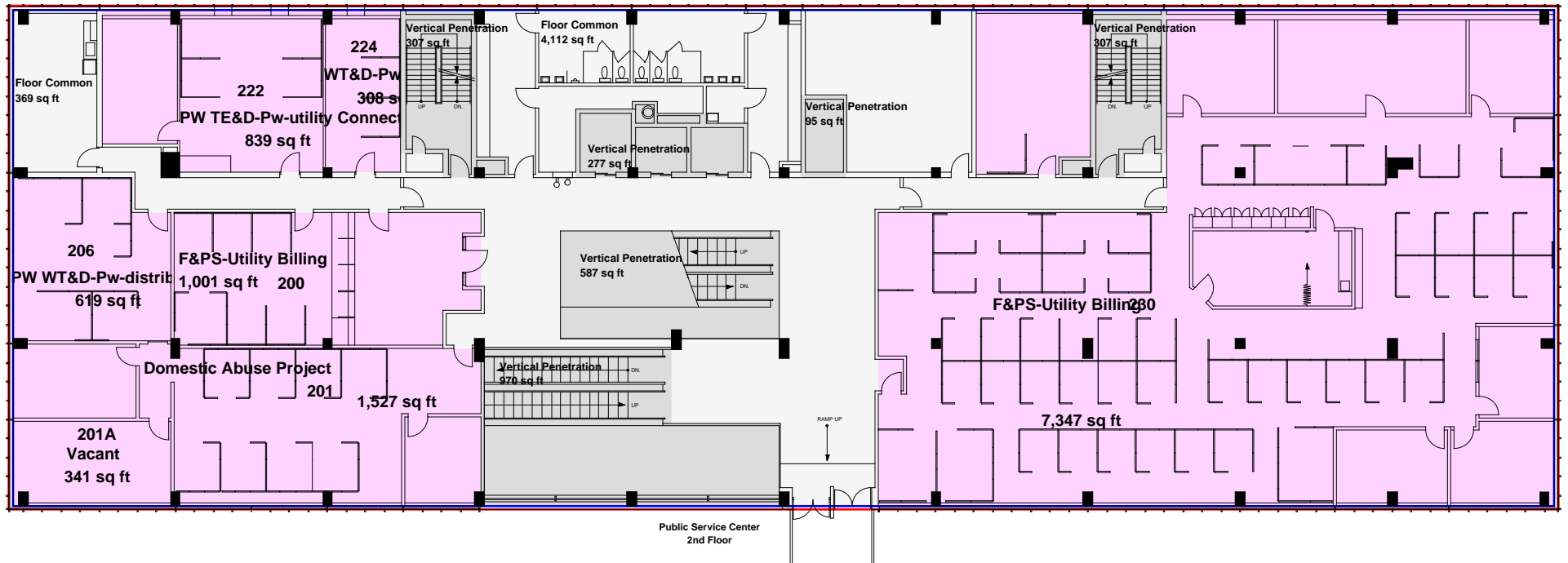


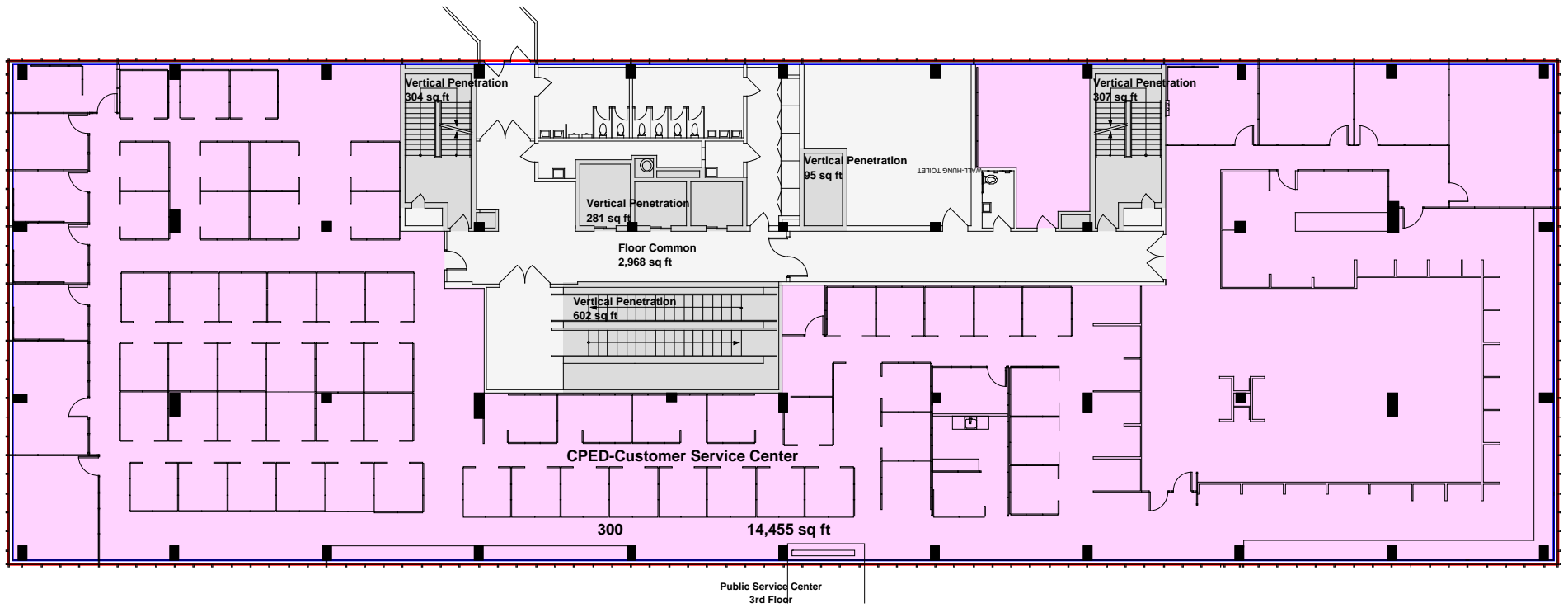
Community Service Center  
Upper Level

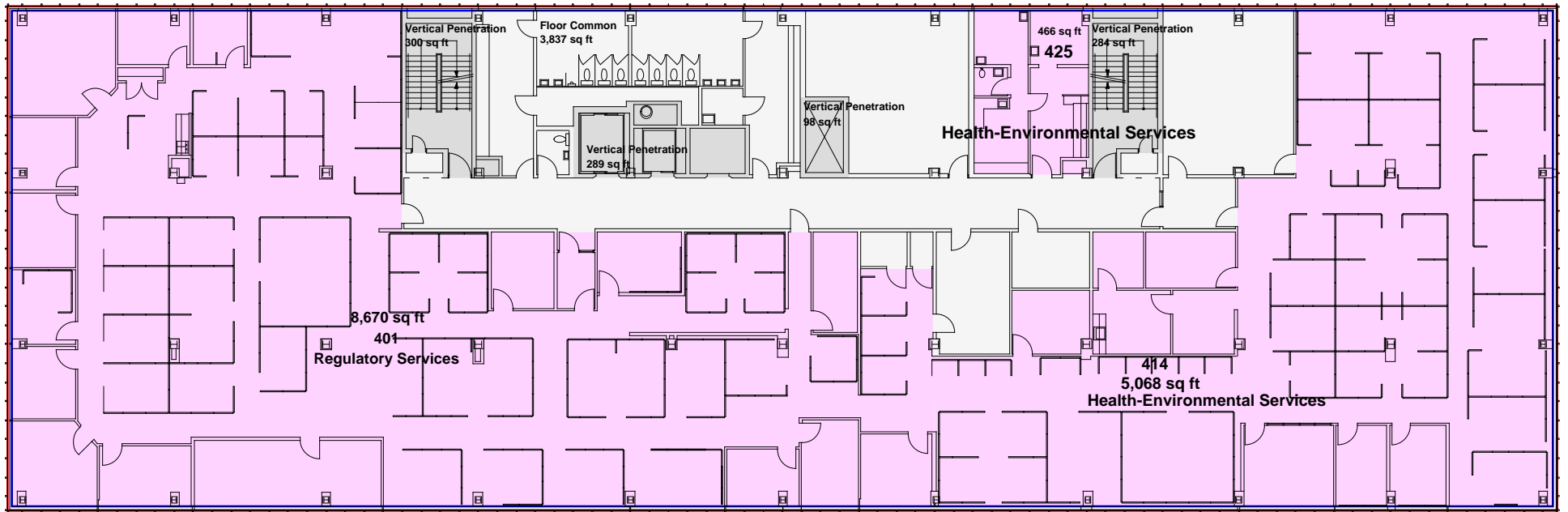


-enfrmnt

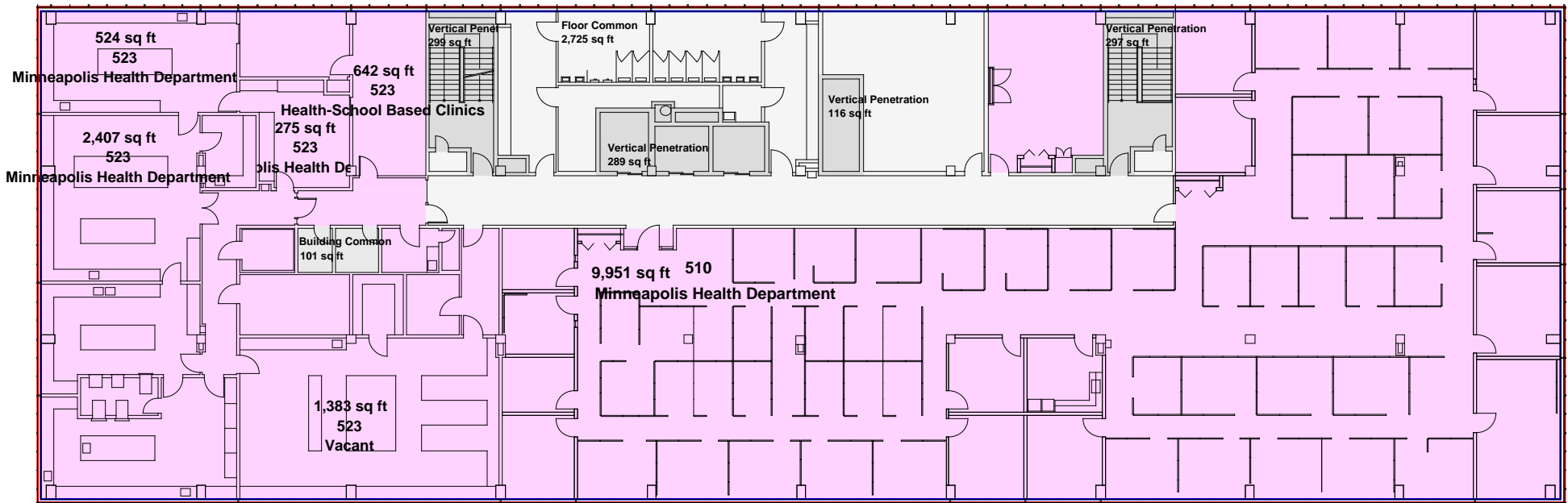




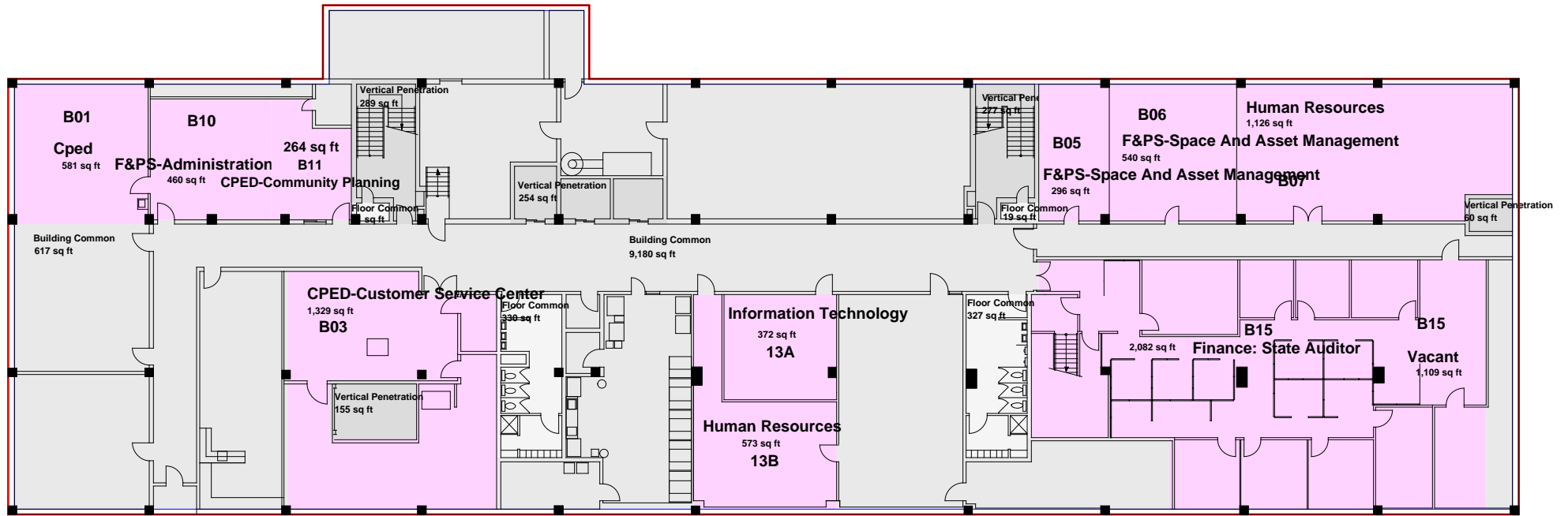




Public Service Center  
4th Floor



Public Service Center  
5th Floor



Public Service Center  
Lower Level