

# North Minneapolis (1) Open House

Wednesday, May 31, 2023

Farview Community Center

Total attendees: 12

## Comments Summary

The following comments were received by staff:

### N 6<sup>th</sup> St

- 6<sup>th</sup> St is quiet and does not need traffic calming – focus on 4<sup>th</sup> St instead

### N 29<sup>th</sup> Ave – East

- Speeding problems on 4<sup>th</sup> St. Many cars don't stop at the stop signs (27<sup>th</sup>, 28<sup>th</sup>, 29<sup>th</sup>) and endanger children in the neighborhood.
- Parking issues in neighborhood when there is an activity at Farview Park.
- Roundabout preferred at 29<sup>th</sup> and 4<sup>th</sup>
- Not in favor of speed bumps or bollards
- 29<sup>th</sup> and N 3<sup>rd</sup> desperately in need of traffic calming
- Roundabout desired on N 4<sup>th</sup> St at Farview Park
- People frequently running stop sign at 29<sup>th</sup> and 3<sup>rd</sup>
- Speed bumps desired at 29<sup>th</sup> Ave N and 3<sup>rd</sup> St
- Roundabout desired on N 4<sup>th</sup> at 26<sup>th</sup> and/or 29<sup>th</sup> – especially concrete or other solid material, not plastic
- Plastic bollards not helpful because they get removed or driven over
- Corner of 29<sup>th</sup> and Bryant has houses with children who are in danger from reckless drivers
- Speeding is dangerous to people visiting Farview Park and neighbors/children
- Issues with crashing into parked cars/hit-and-runs
- Roundabout desired at 29<sup>th</sup> and 4<sup>th</sup>, 26<sup>th</sup> and 4<sup>th</sup>
- Excessive speed, running stop signs around Farview Park on Lyndale, 29<sup>th</sup> Ave, 4<sup>th</sup> St, 3<sup>rd</sup> St
- Parking needed on 29<sup>th</sup>

### N 29<sup>th</sup> Ave - West

- 27<sup>th</sup> to 29<sup>th</sup> at Girard needs speed bumps
- Not in favor of bollards at 27<sup>th</sup> and Girard
- Girard Ave N between 26<sup>th</sup> and Lowry: problem speeding, drivers ignoring stop sign. Speed humps desired on Girard between 27<sup>th</sup> and 29<sup>th</sup>
- Girard between 26<sup>th</sup> and 27<sup>th</sup> and Lowry at 29<sup>th</sup> are often overparked into intersections – making turns challenging/dangerous

# Board Comments

N 6<sup>th</sup> St

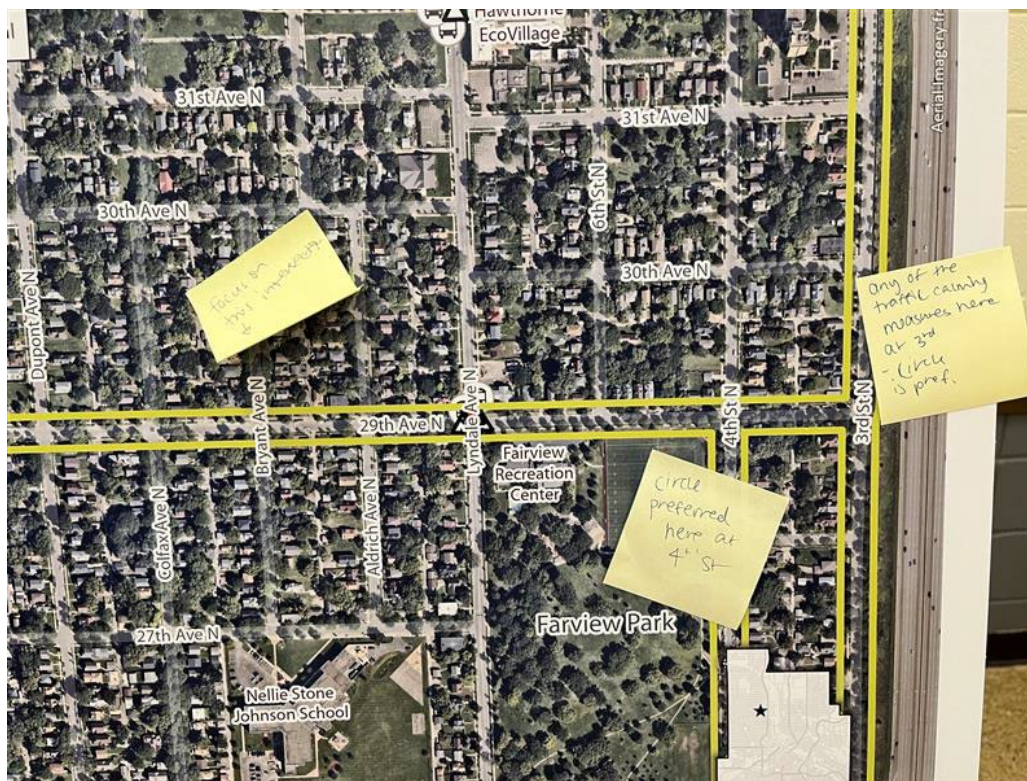
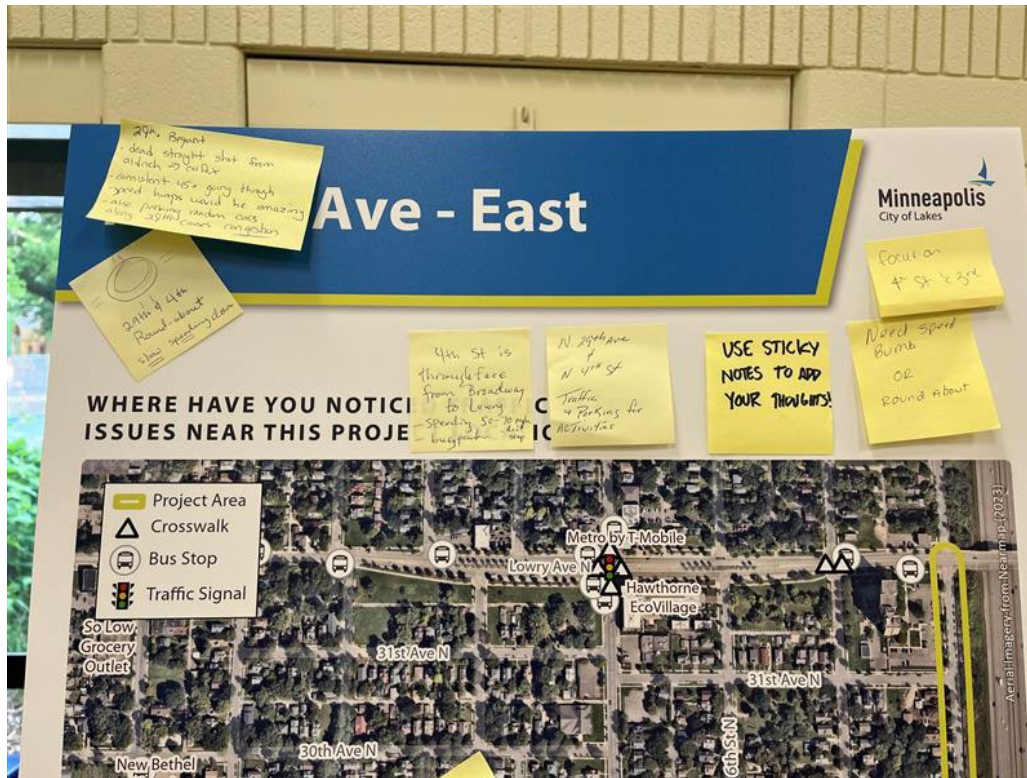
USE THE STICKY NOTES TO ADD YOUR OWN THOUGHTS!

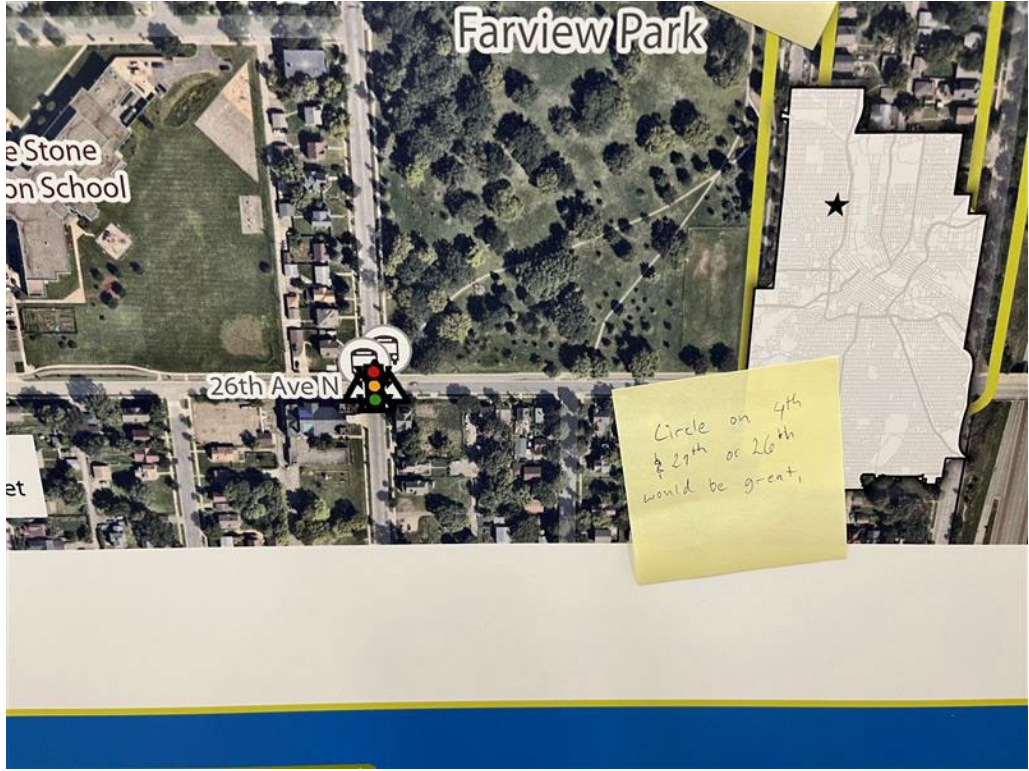
6th Street is very quiet! why slow?

### WHERE HAVE YOU NOTICED TRAFFIC SAFETY ISSUES NEAR THIS PROJECT LOCATION?

The map displays an aerial view of a residential neighborhood in Minneapolis. A yellow vertical line marks the project area along N 6th St, extending from Dowling Ave N at the top to Lowry Ave N at the bottom. The map includes a legend in the top left corner with the following items: Project Area (yellow line), Crosswalk (triangle with exclamation mark), Bus Stop (circle with 'B'), and Traffic Signal (traffic light icon). Labeled streets include Emerson Ave N, Dupont Ave N, Colfax Ave N, Bryant Ave N, Aldrich Ave N, Lynch Ave N, 37th Ave N, 36th Ave N (Northside Food Market), 35th Ave N, 34th Ave N, 33rd Ave N, and Lowry Ave N. Other landmarks include Perkins Hill, Fellowship Missionary Baptist Church, Metro by T-Mobile, Hawthorne EcoVillage, and Big Brothers Big Sisters Twin Cities. A scale bar at the bottom left shows distances from 0 to 1,000 feet. A north arrow is also present. A small inset map in the bottom right shows the project location within the city of Minneapolis. Aerial imagery is dated 2023.

N 29<sup>th</sup> Ave – East





N 29<sup>th</sup> Ave – West

