

Midtown-Phillips Open House

Tuesday, June 6, 2023, 6-7 p.m.

Phillips Community Center

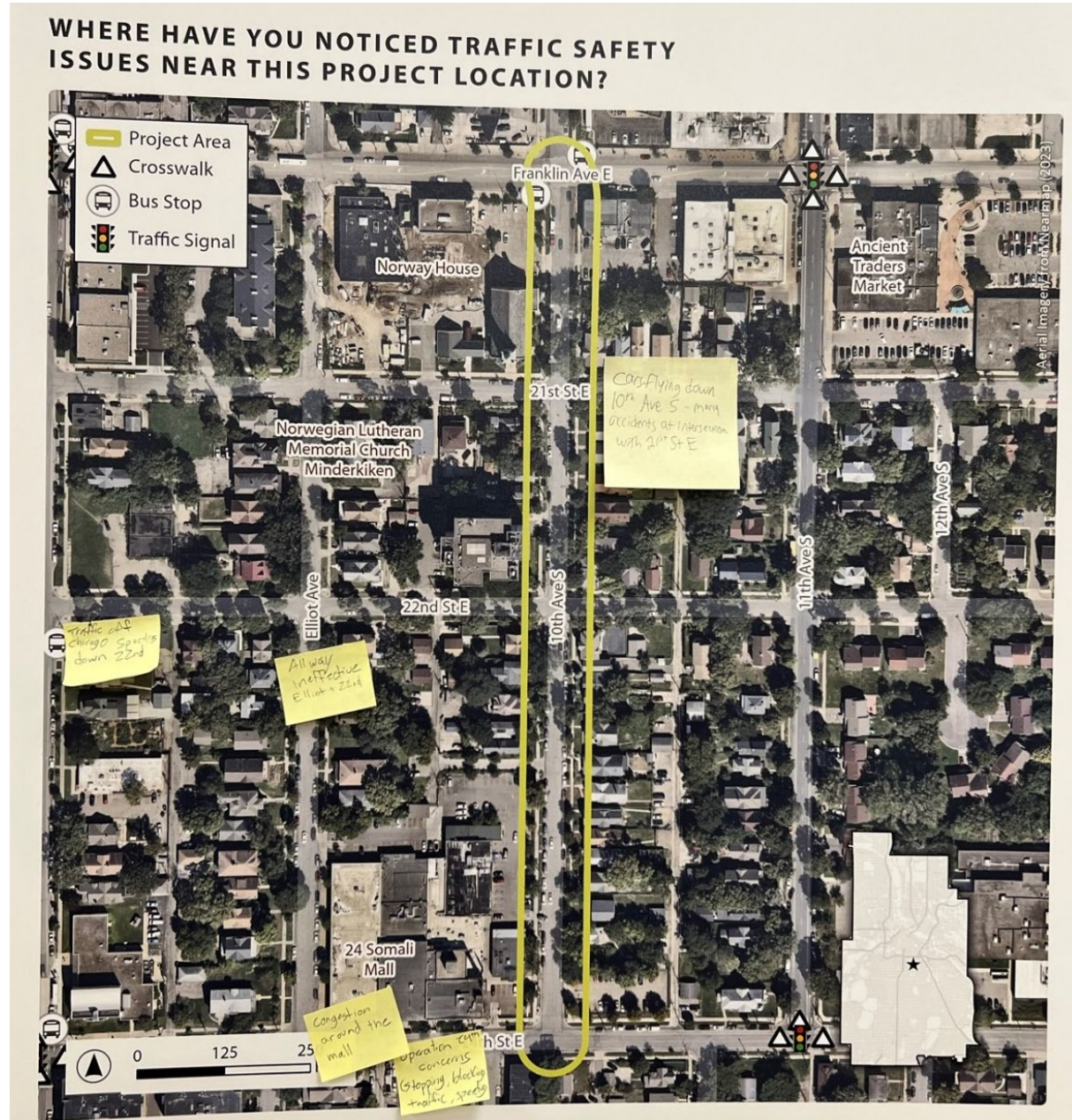
Total attendees: 6

Comment Forms

- “Traffic from Chicago heading east does not obey 4-way stop. They accelerate through the intersection at Elliot. They also drive south on Elliot through 22nd after drive-by shootings and late at night to miss traffic on Chicago. A traffic circle would be beneficial.”
- “Speed hump between 14th and 15th Avenues along E 27th St. Why? 1) Excessive speed – 40-50, even 60 mph has been known and recorded; 2) many or most drivers have ignored “20 is Plenty” signs; 3) 3 blocks from stop sign to stop sign; 4) it’s become bypass for some who don’t want to take 26th or 28th St (one-ways); 5) this is a school zone/bus stop street for kids who have witnessed speeds at dangerous levels.”

Board Comments

S 10th Ave



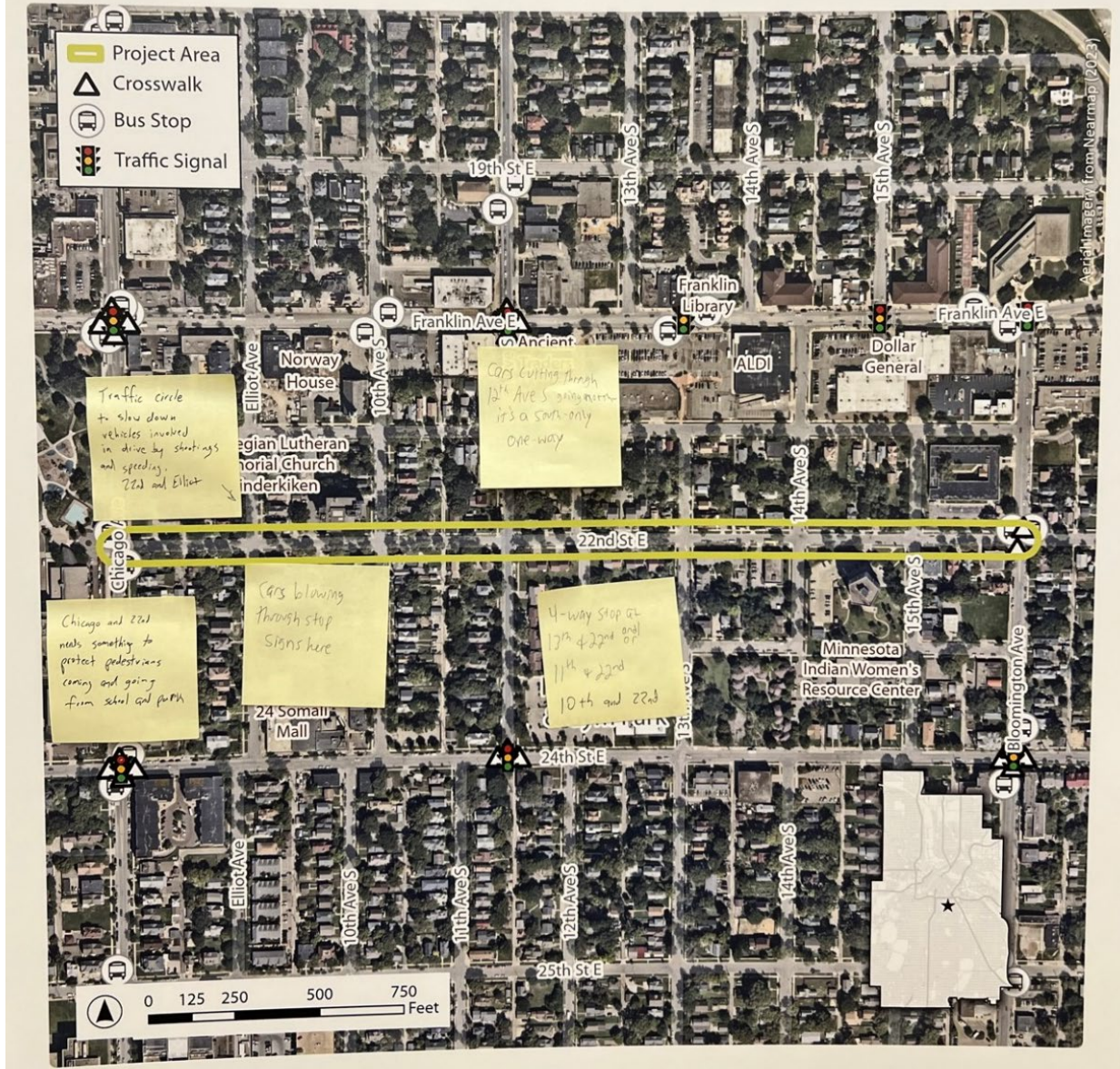
S 11th Ave

WHERE HAVE YOU NOTICED TRAFFIC SAFETY
ISSUES NEAR THIS PROJECT LOCATION?



E 22nd St

WHERE HAVE YOU NOTICED TRAFFIC SAFETY ISSUES NEAR THIS PROJECT LOCATION?



E 27th St

WHERE HAVE YOU NOTICED TRAFFIC SAFETY ISSUES NEAR THIS PROJECT LOCATION?

