

FIRE DEPARTMENT

CITY OF

MINNEAPOLIS



ANNUAL STATISTICAL REPORT

2012

MINNEAPOLIS FIRE DEPARTMENT

ANNUAL STATISTICAL REPORT

2012



MISSION STATEMENT

Members of the Minneapolis Fire Department are thoroughly trained and ready to protect lives, property and the environment by rapidly responding to emergencies and hazardous situations. We are committed to prevention by proactively working with the community to reduce risk to life, property and the environment.

**MINNEAPOLIS FIRE
DEPARTMENT
2012 SUMMARY**



Population 382,578
Land area (sq. miles) 58.7
2012 Budget \$52,561,000

PERSONNEL (effective 12/31/12)

Fire Chief 1
Assistant Chiefs 2
Deputy Chiefs 4
Battalion Chiefs 14
Fire Marshal 1
Staff Captains 8
Captains 93
Fire Motor Operators 92
Firefighters 165
Fire Investigators 3
Fire Inspectors 2

TOTAL SWORN 385

Civilians 7

TOTAL PERSONNEL 392

Battalions 4
Fire stations 19
Engine Companies 19
Ladder Companies 6
Heavy Rescue 2
Command Van 1
Salvage Rig 1

FIRE LOSS

Total Structure Fires 643
Loss \$19,481,415

Total Vehicle Fires 210
Loss \$492,838

Total Other Fires 492
Loss \$261,026

Total Fire Loss \$20,235,279

Excludes mutual/auto aid & exposures

MULTIPLE ALARM FIRES

2-2 Alarms 13
3-3 Alarms 8
4-4 Alarms 0
Total Multiple Alarms 21

TOTAL LOSS \$15,268,200

CIVILIAN FIRE VICTIMS

Deaths 3
Injuries 33

FIREFIGHTER INJURIES

Lost Time Injuries 45
No Lost Time Injuries 155

TOTAL FF INJURIES 200

Total Fire Company Familiarizations 1290

Total Board Up Runs 947

Fires 1,362
EMS & Rescue 24,668
False Alarm 4,122
Hazardous Condition 885
Other Incidents 5,974

Total Calls for Service 37,011

Includes Mutual/Auto Aid & Exposures

APPARATUS RESPONSES

Company Total Runs

Engine 6 3777
Engine 1 3208
Engine 14 3142
Engine 7 3030
Engine 8 2847
Engine 5 2633
Engine 16 2326
Engine 21 2230
Engine 4 2142
Engine 17 2068
Engine 11 2050
Engine 20 1706
Engine 15 1468
Engine 2 1463
Engine 27 1313
Engine 19 1114
Engine 22 991
Engine 28 866

Engine 12 859

Ladder 11 2115
Ladder 3 1828
Ladder 4 1348
Ladder 10 1237
Ladder 5 1155
Ladder 2 917

Rescue 1 869
Rescue 9 802

**Average Response Time
3 minutes, 58 seconds**

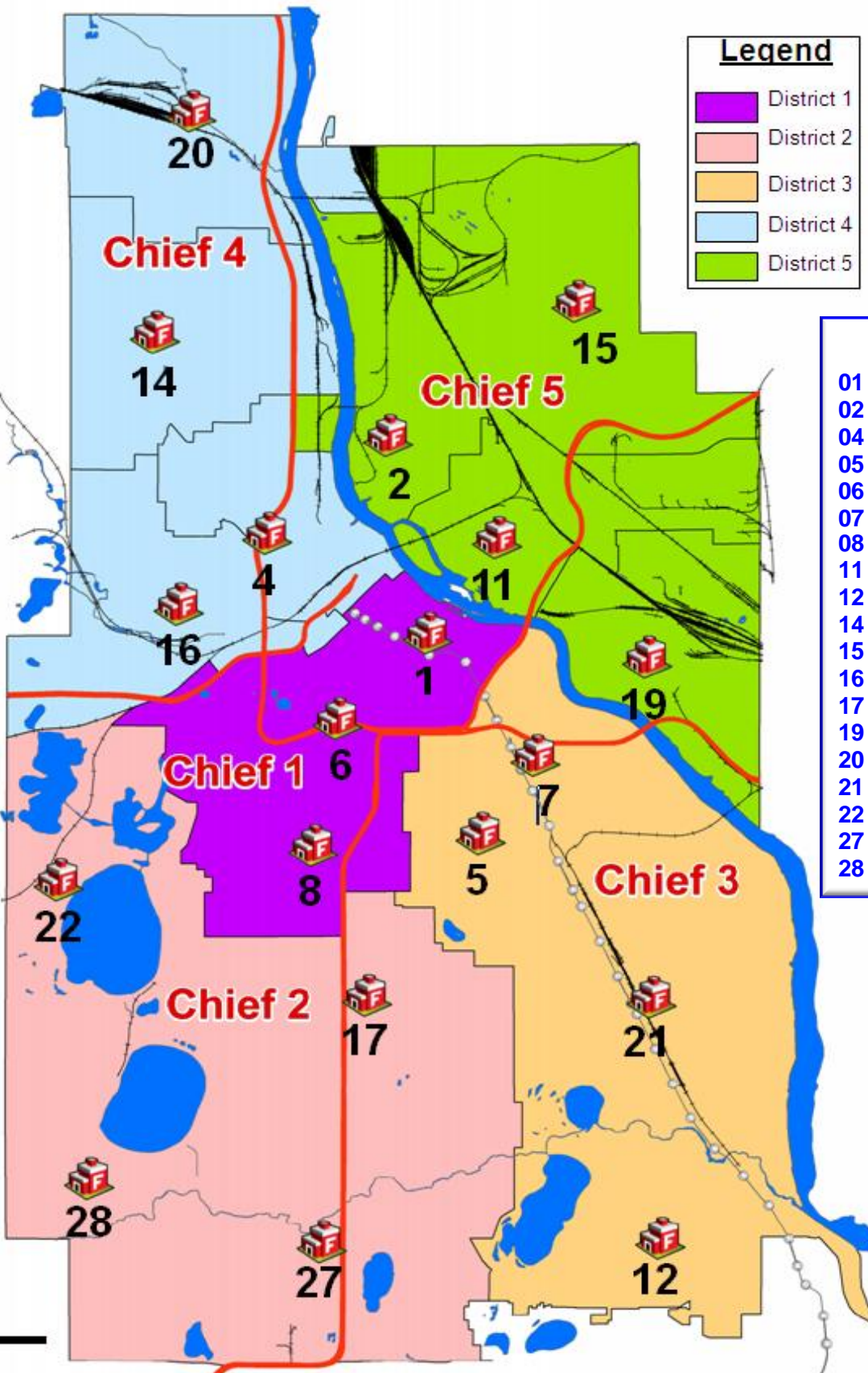
- 80% of all fire calls responded to in less than 5 minutes
- 81.2% of all EMS calls responded to in less than 5 minutes

**Structural Fires
whose lines laid
excluding residential garages**

- First-in rig on scene in less than 5 minutes 88% of the time
- 14 FFs on scene of initial alarm in less than 9 minutes, 20 seconds 93% of the time (not including upgrades)



Minneapolis Fire Department Station Locations



Legend

- District 1
- District 2
- District 3
- District 4
- District 5

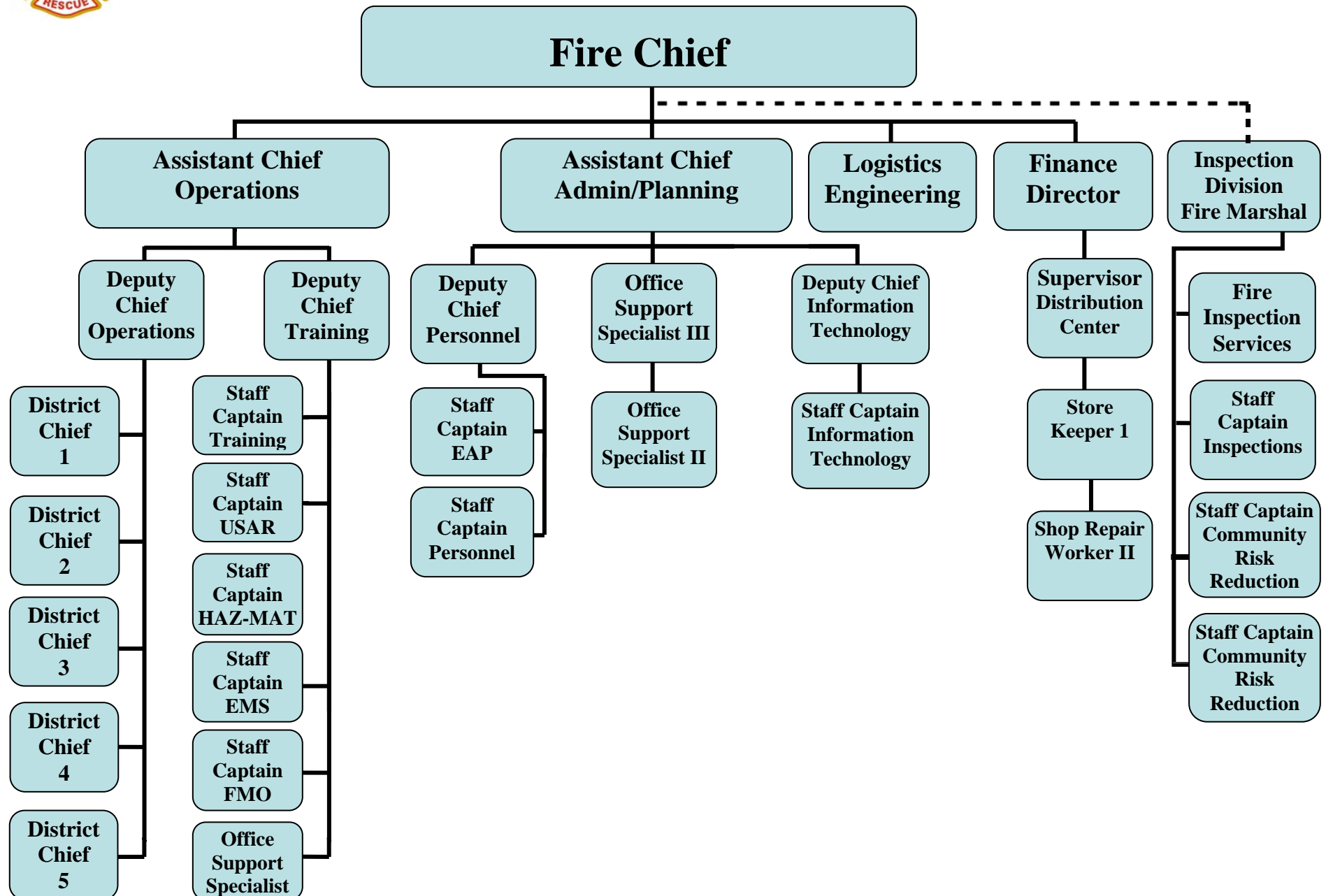
Station Locations

- 01 - 530 3rd St S
- 02 - 143 13th Ave NE
- 04 - 1101 6th St N
- 05 - 2700 Bloomington Ave S
- 06 - 121 15th St S
- 07 - 2000 Franklin Ave E
- 08 - 2749 Blaisdell Ave S
- 11 - 229 6th St SE
- 12 - 5401 33rd Ave S
- 14 - 2002 Lowry Ave N
- 15 - 2701 Johnson Ave NE
- 16 - 1600 Glenwood
- 17 - 330 38th St E
- 19 - 200 Ontario St SE
- 20 - 4646 Humboldt Ave N
- 21 - 3209 38th St E
- 22 - 3025 Market Plaza
- 27 - 5410 Nicollet Ave S
- 28 - 2810 50th St W



Minneapolis Fire Department

1-200.00 - Organizational Chart





CITY OF MINNEAPOLIS

Mayor

R. T. Rybak

City Council



Ward 1 Kevin Reich
Ward 2 Cam Gordon
Ward 3 Diane Hofstede
Ward 4 Barbara Johnson
Ward 5 Don Samuels
Ward 6 Robert Lilligren
Ward 7 Lisa Goodman

Ward 8 Elizabeth Glidden
Ward 9 Gary Schiff
Ward 10 Meg Tuthill
Ward 11 John Quincy
Ward 12 Sandra Colvin Roy
Ward 13 Betsy Hodges

City Coordinator

Paul Aasen



Minneapolis Fire Department Chief Officers and Staff

Fire Chief

Alex Jackson/John Fruetel

Assistant Fire Chiefs

Charles Brynteson
Cherie Penn

Deputy Chiefs, Suppression

Harold Breffle
Michael Dickinson
Donald Leedham

Deputy Chief, Training

Raymond Cruz

Fire Marshal

Perry Ebner

Employee Assistance Program

Mark Olson

Deputy Chief, Information & Technology (acting)

Timothy Hillmeyer

Deputy Chief, Personnel (acting)

Jennie Kawaters

Finance & Logistics Director

Luke Scardigli

Engineering

Colleen Mullen

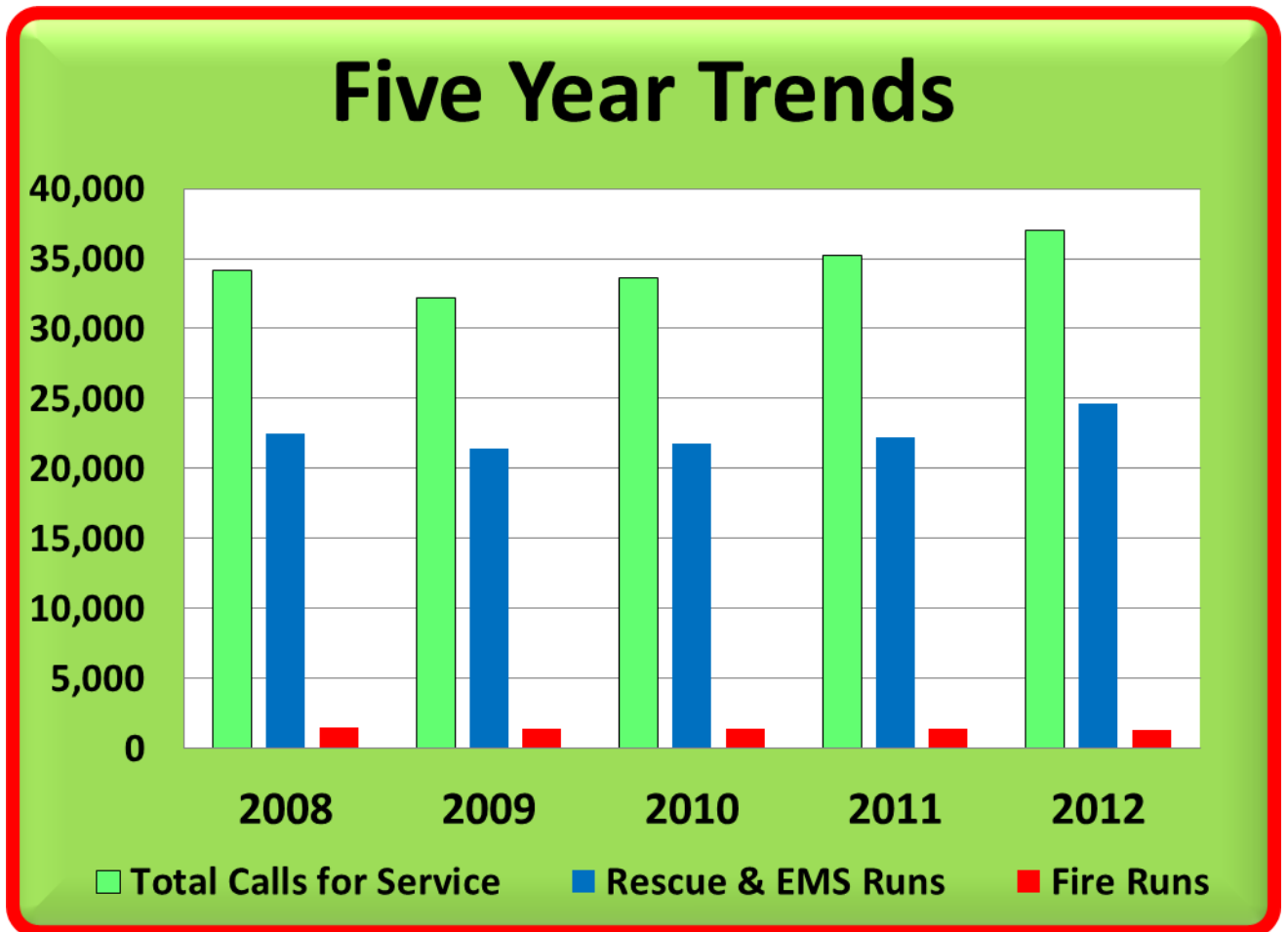
Battalion Chiefs

Michael Carswell
Richard Christensen
Michael Dahlberg
David DeWall
Stephen Dziedzic
Steven Ebert
Anthony Kuczek
Randall Miller
Kathleen Mullen
Edward Otis
Gary Piekarczyk
Kevin Rousseau
Todd Steinhilber
Todd White



Five Year Trends 2008 – 2012

Total Calls for Service,
Total Fire Runs and Total Rescue & EMS Runs

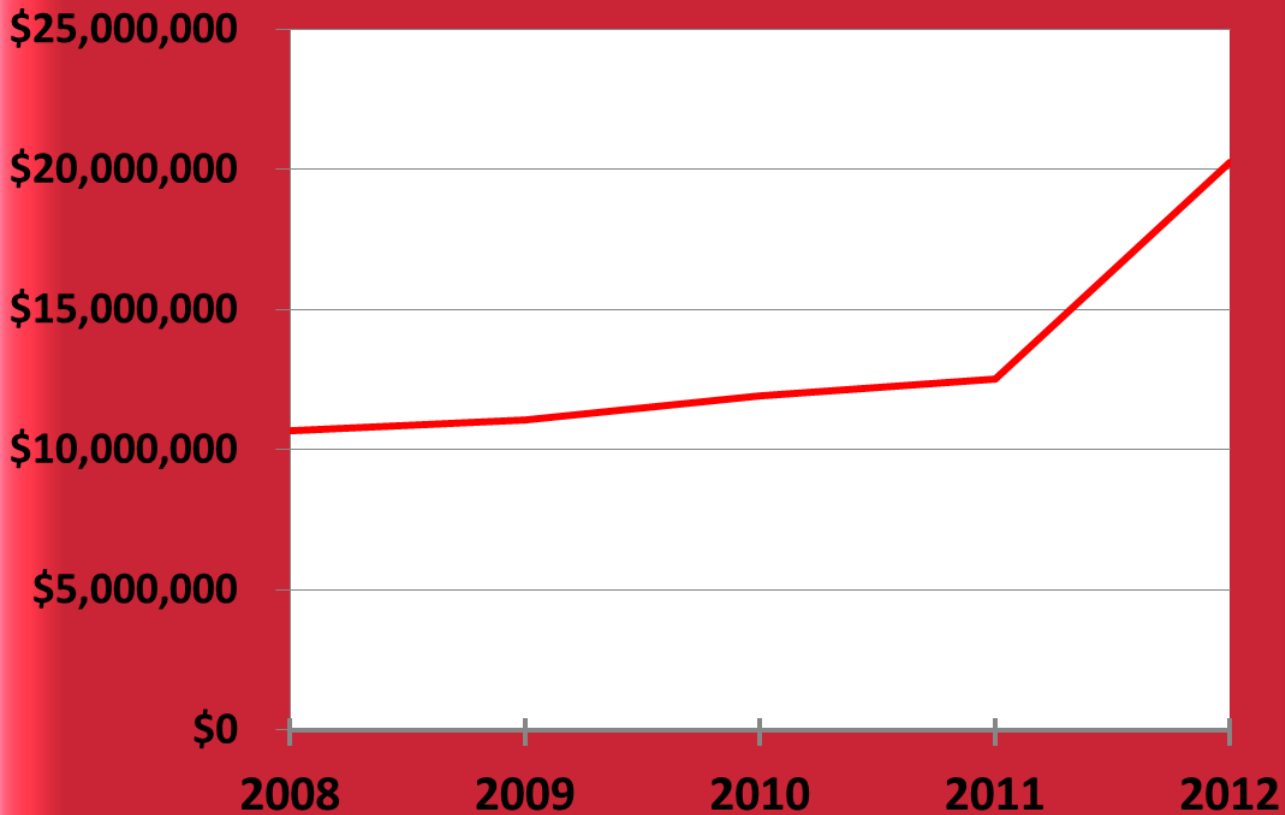


	Total Calls for Service	Rescue & EMS Runs	Fire Runs
2008	34,191	22,492	1,489
2009	32,191	21,400	1,401
2010	33,601	21,781	1,392
2011	35,204	22,247	1,367
2012	37,011	24,668	1,362



Five Year Fire Loss Totals

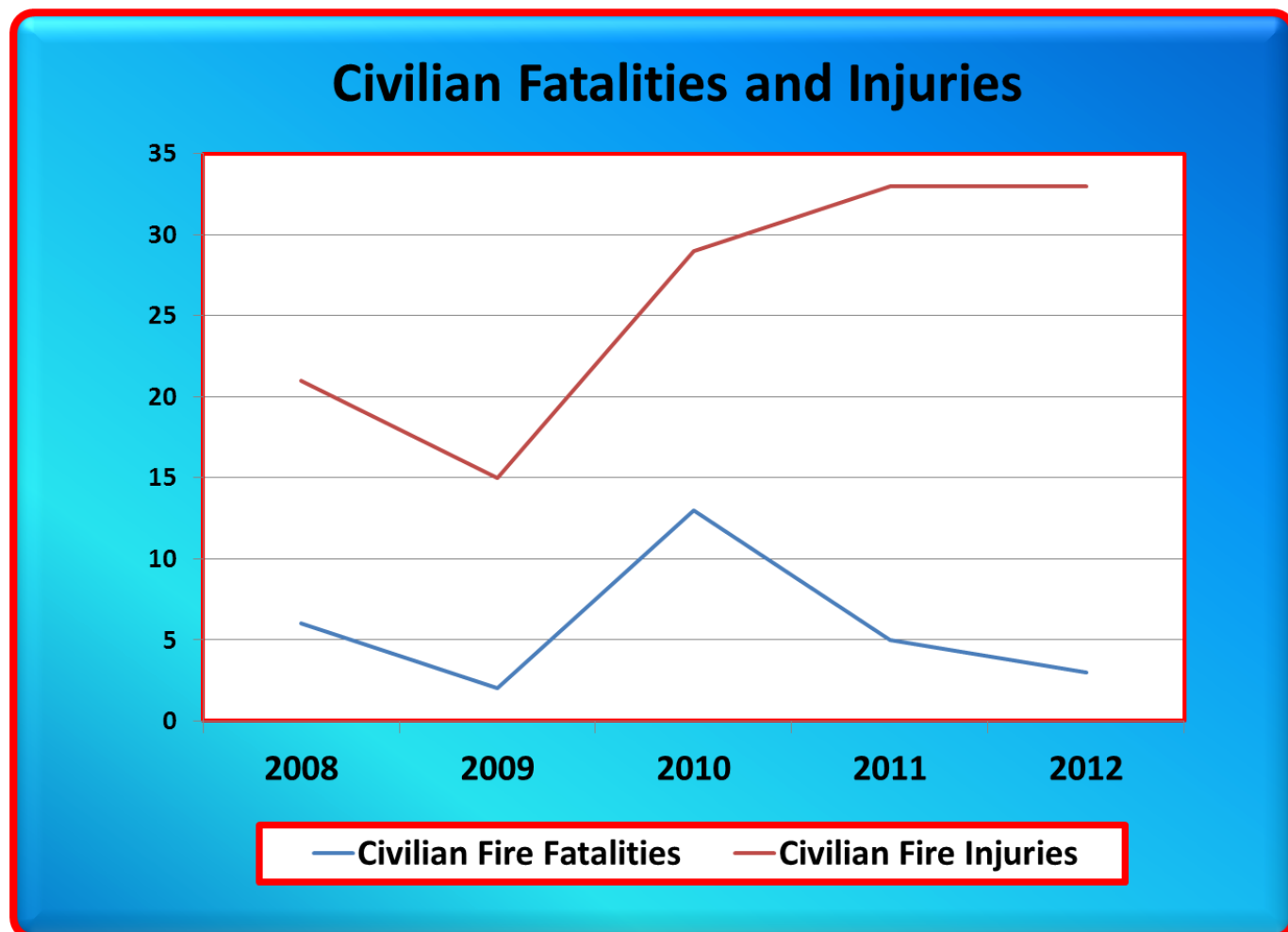
Total Fire Loss



Year	Total Fire Loss
2008	\$10,665,039
2009	\$11,065,130
2010	\$11,918,235
2011	\$12,530,310
2012	\$20,235,279



Civilian Fatalities and Injuries

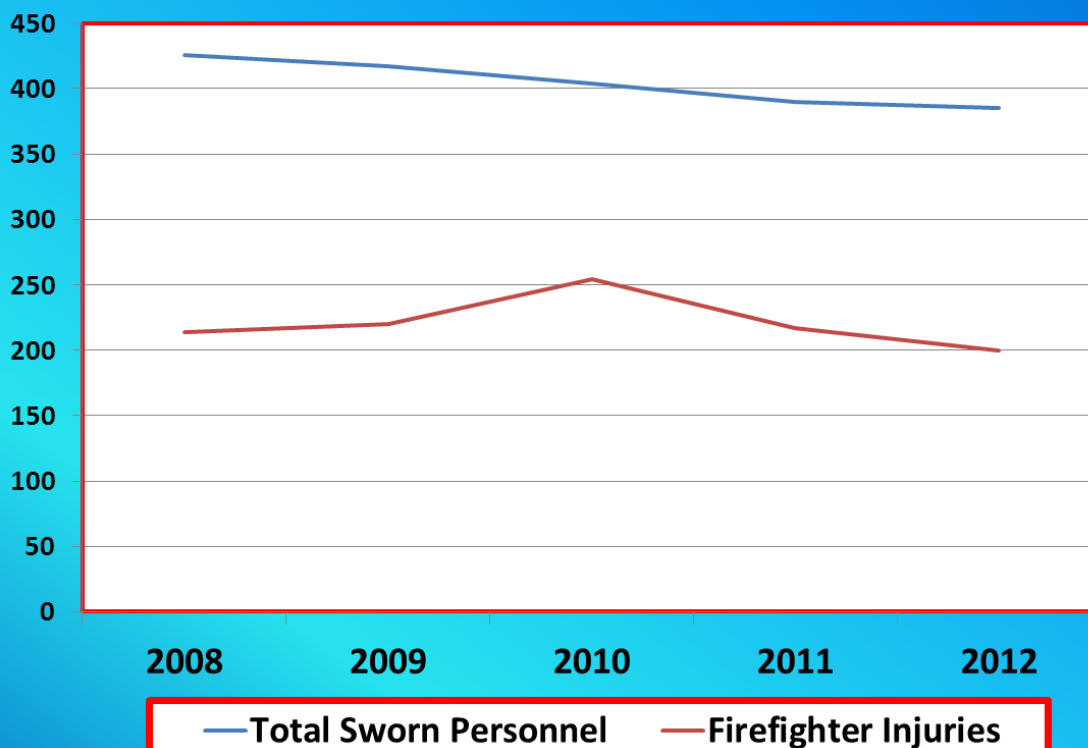


	Civilian Fire Fatalities	Civilian Fire Injuries
2008	6	21
2009	2	15
2010	13	29
2011	5	33
2012	3	33



Total Sworn Personnel and Firefighter Injuries

Total Sworn Personnel and Injuries



Year	Total Sworn Personnel	Firefighter Injuries
2008	426	214
2009	417	220
2010	404	254
2011	390	217
2012	385	200



2012 Positions by Division (sworn & civilian as of 12/31/2012)

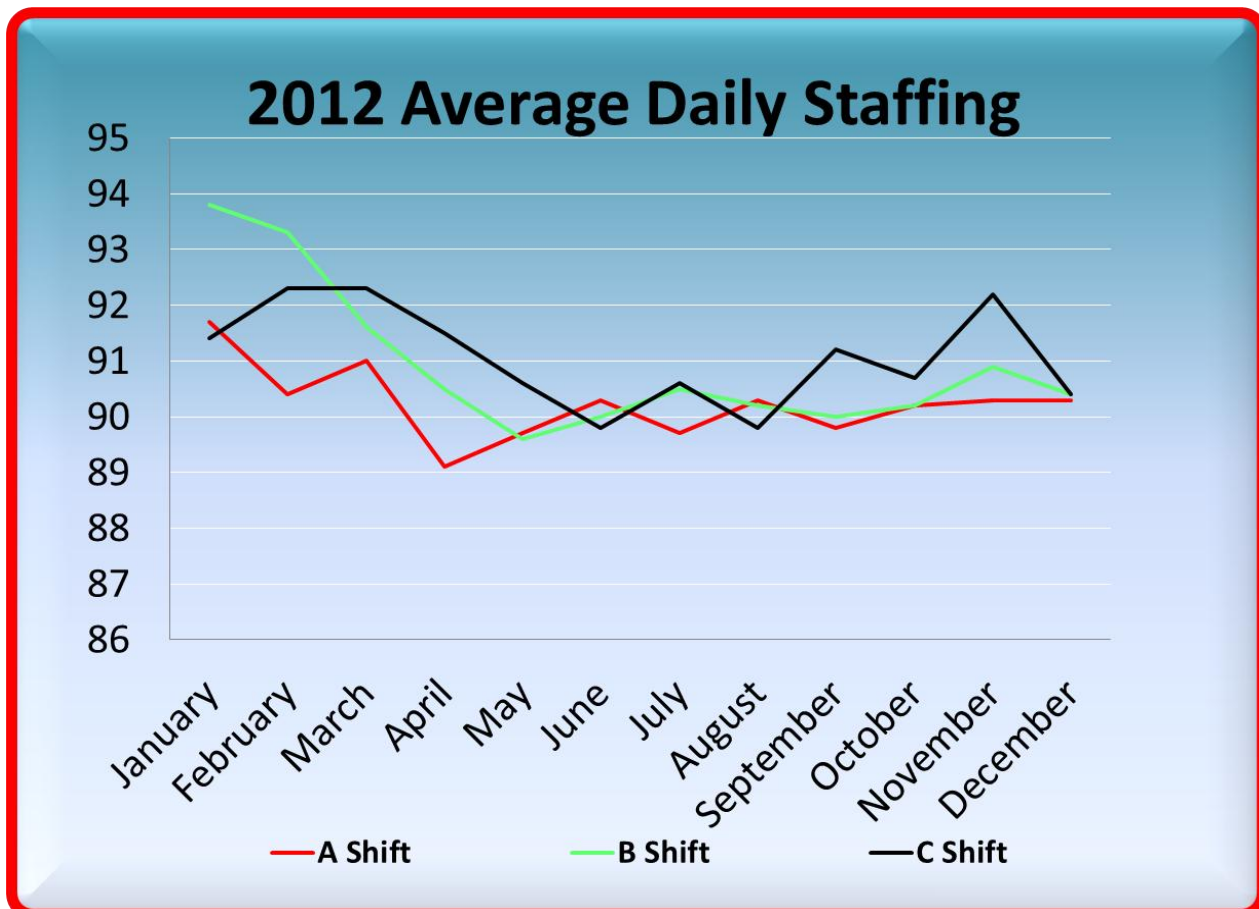
Division	Total	Sworn	Civilian
Emergency Response	370	370	0
Fire Prevention Bureau	4	4	0
Headquarters Staff & Fire Stores	14	8	6
Training Staff	4	3	1

Sworn Personnel Summary (12/31/2012)		
	Total Number	% of Total
Total Sworn Personnel	385	
Total People of Color	125	32.47%
Total Males	328	85.19%
White	220	67.07%
Black	63	19.21%
American Indian	19	5.80%
Hispanic	16	4.88%
Asian	9	2.74%
Hawaiian	1	.30%
Male People of Color Totals	108	32.93%
Total Females	57	14.81%
White	40	70.18%
Black	7	12.28%
American Indian	5	8.77%
Hispanic	4	7.02%
Asian	1	1.75%
Female People of Color Totals	17	29.82%



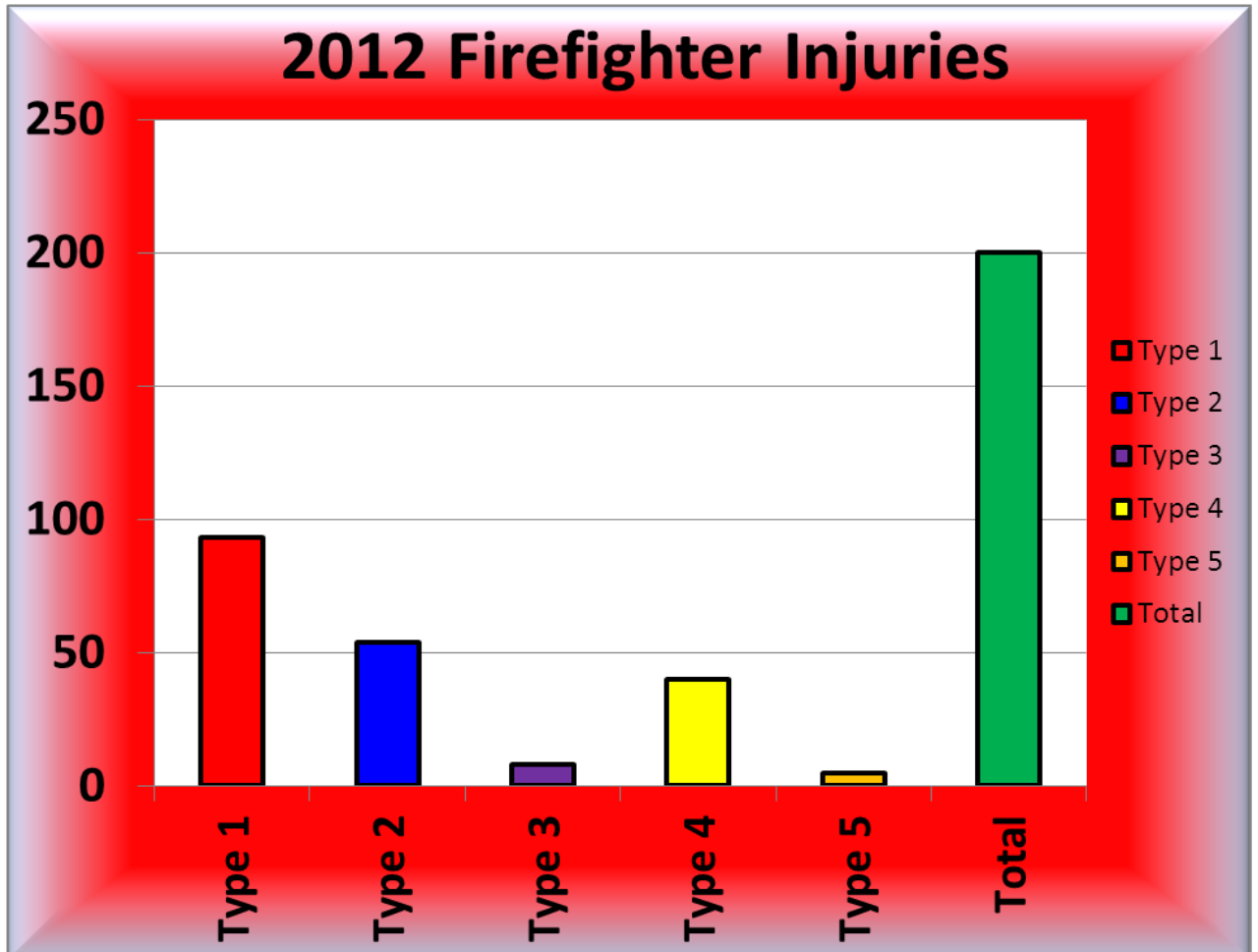
Minneapolis Fire Department 2012 Average Daily Staffing (includes hirebacks)

Month	A Shift	B Shift	C Shift	Total
January	91.7	93.8	91.4	92.3
February	90.4	93.3	92.3	91.9
March	91.0	91.6	92.3	91.7
April	89.1	90.5	91.5	90.4
May	89.7	89.6	90.6	90.0
June	90.3	90.0	89.8	90.0
July	89.7	90.5	90.6	90.3
August	90.3	90.2	89.8	90.1
September	89.8	90.0	91.2	90.3
October	90.2	90.2	90.7	90.4
November	90.3	90.9	92.2	91.1
December	90.3	90.4	90.4	90.3
Totals	90.2	90.9	91.1	90.7





Minneapolis fire Department 2012 Firefighter Injuries



2012 - Firefighter Injuries

Type 1 - Report only, including exposures – no lost time

Type 2 - First aid only – no lost time

Type 3 - Treated by physician – no lost time

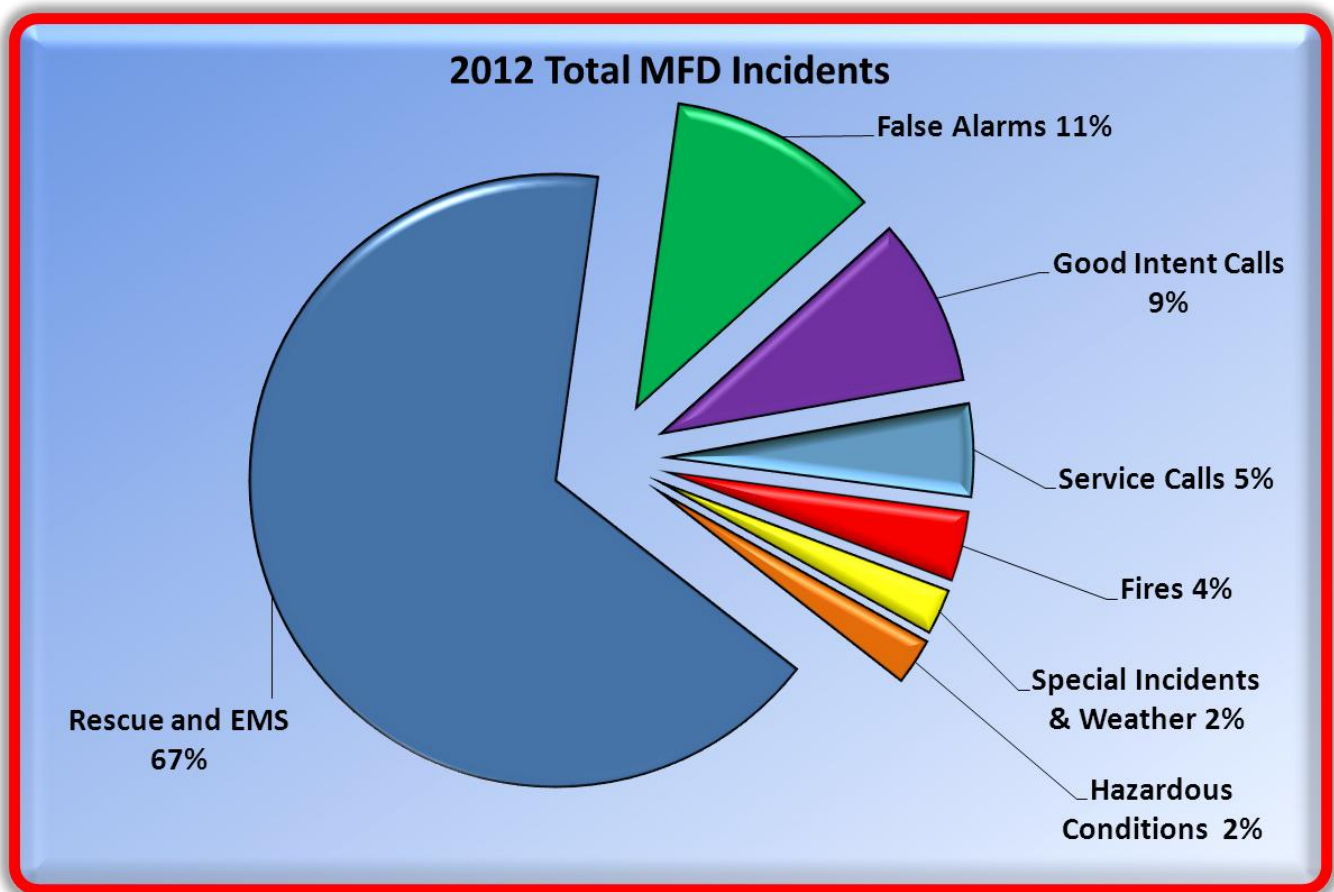
Type 4 - Moderate severity – lost time injury

Type 5 - Severe – lost time injury



2012 Total MFD Incidents (includes exposures and mutual aids)

Rescue and Emergency Medical Service	24,668
False Alarm and False Call	4,122
Good Intent Call	3,275
Service Call	1,795
Fires	1,362
Hazardous Conditions/Explosions – No Fire	885
Special Incident/Weather	904
Totals	37,011





Minneapolis Fire Department

2012 Fires by Incident Type (includes exposure and mutual aid fires)

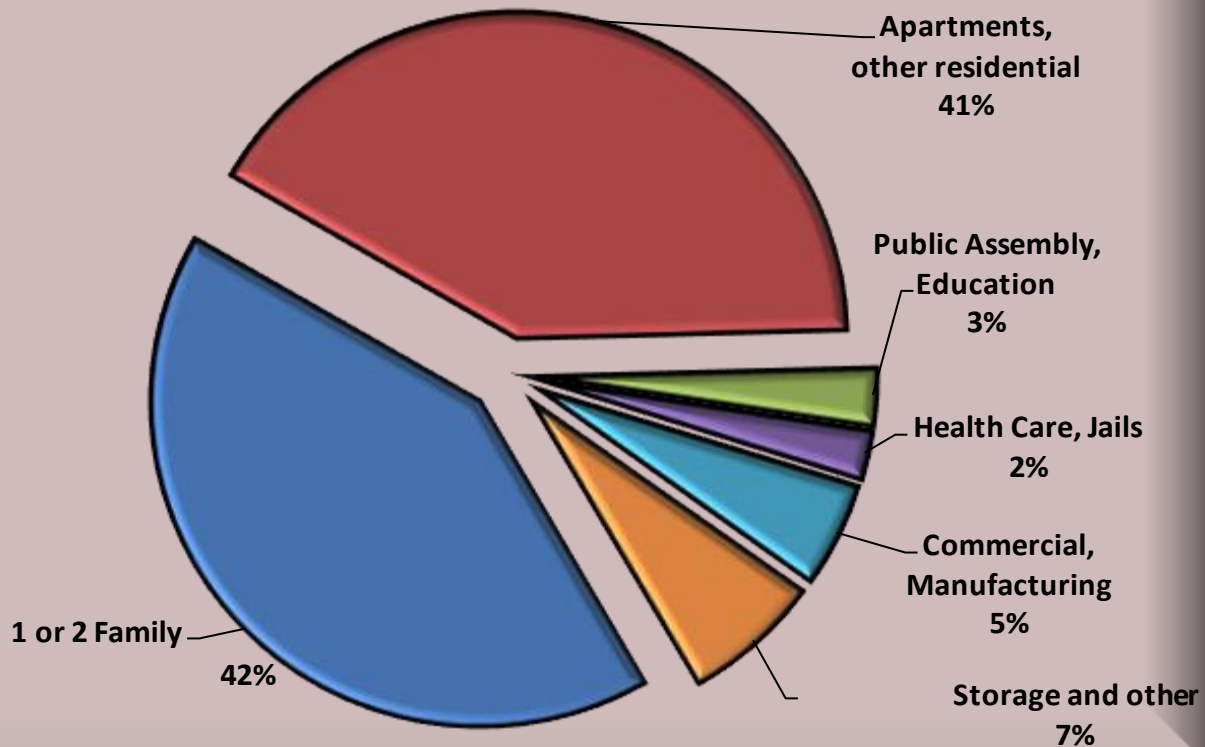
<u>Incident Type</u>	<u>Count</u>	<u>Estimated Loss (in dollars)</u>
Building fire	336	19,466,065
Fires in structures other than in a building	17	5,650
Cooking fire, confined to container	250	2,200
Chimney or flue fire, confined to chimney or flue	8	0
Fuel burner/boiler malfunction, fire	1	0
Commercial Compactor fire, confined	3	5,000
Trash or rubbish fire, contained	36	1,000
Fire in portable building, fixed location	7	1,500
Passenger vehicle fire	199	452,038
Road freight or transport vehicle fire	10	40,800
Rail vehicle fire	1	0
Off-road vehicle or heavy equipment fire	2	0
Natural vegetation fire, Other	53	0
Forest, woods or wildland fire	5	0
Brush, or brush and grass mixture fire	60	0
Grass fire	42	0
Cultivated vegetation, crop fire	1	0
Outside rubbish, trash or waste fire	143	4,925
Dumpster or other outside trash receptacle fire	124	1,251
Special outside fire, Other	40	213,550
Outside storage fire	2	2,500
Outside equipment fire	20	38,800
Outside gas or vapor combustion	1	0
Outside mailbox fire	1	0
Totals	1,362	\$20,235,279



Minneapolis Fire Department 2012 Structure Fires by Property Use

Structure Use	Number	Estimated Loss (in dollars)
Residential		
• 1 or 2 Family	283	4,671,935
• Apartments	255	848,875
• Hotels & Motels	2	5,000
• All other residential	23	485,250
Public Assembly	15	393,500
Schools & Colleges	4	100
Health Care & Jails	16	3,544,850
Stores & Offices	25	1,018,050
Industry, Utility, Manufacturing	10	63,300
Storage (including residential garages)	39	409,300
Other Structures	7	40,300
Totals	679	\$11,480,460

2012 Structure Fires By Property Use





Minneapolis Fire Department 2012 Multiple Alarm Incidents

2-2 Alarms	13
3-3 Alarms	8

TOTAL MULTIPLES	21
------------------------	-----------

2-2 Alarms

<u>Date</u>	<u>Time</u>	<u>Location</u>	<u>Occupancy Type</u>	<u>Loss</u>
Jan-03	135	315 Lowry Avenue North	Highrise Apartment	\$13,000
Feb-19	1804	50 37th Avenue NE	Warehouse	\$25,000
Feb-27	433	301 East Lake Street	Commerical	\$42,000
Feb-28	1956	15 East Grant Street	Highrise Apartment	\$7,600
Mar-25	354	1715 East Lake Street	Commerical	\$20,000
			Commercial/Residenti	
Apr-28	703	1122 Lowry Avenue North	al	\$552,000
		2941 Chicago Avenue		
May-12	1851	South	Commercial	\$11,000
May-30	534	2433 5th Avenue South	Highrise Apartment	\$0
Jun-02	1539	4400 Lyndale Avenue North	Industrial	\$20,000
Jul-05	452	2935 Colfax Avenue North	House	\$84,000
Jul-23	2121	3513 Dupont Avenue South	Apartment	\$90,000
Sep-15	203	2316 Jefferson Street NE	Storage	\$45,000
Sep-17	2056	2732 11th Avenue South	House	\$10,000

3-3 Alarms

<u>Date</u>	<u>Time</u>	<u>Location</u>	<u>Occupancy Type</u>	<u>Loss</u>
Mar-09	203	137 East 17th Street	Apartment	\$2,250,600
May-27	2025	3104 16th Avenue South	Church	\$500,000
Jun-10	939	550 Kasota Avenue	Industrial	\$10,000,000
Jun-25	1616	920 East 19th Street	Apartment	\$20,000
Jun-29	2111	1855 East 28th Street	Industrial	\$85,000
Jul-22	1451	2321 Fillmore Street NE	Duplex	\$198,000
Jul-28	437	2812 1st Avenue South	House	\$295,000
Dec-28	809	1508 West Lake Street	Condominiums	\$1,000,000

TOTAL LOSS	<u>\$15,268,200</u>
-------------------	----------------------------

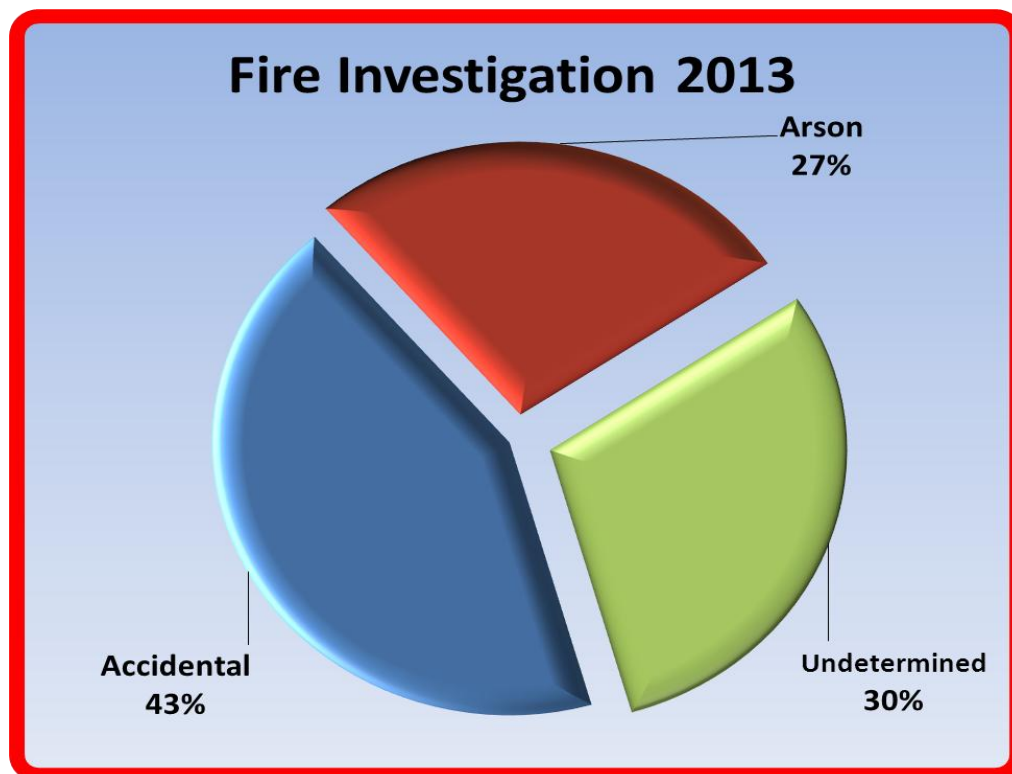


Minneapolis Fire Department Fire Investigation 2012

	# Fires Investigated	# Arson Fires	% Arson Fires
January	22	4	18%
February	31	5	16%
March	32	8	26%
April	34	12	35%
May	36	9	25%
June	36	13	36%
July	46	15	32%
August	40	17	42%
September	48	11	22%
October	30	8	27%
November	30	10	30%
December	33	1	3%

There were 418 total fires investigated in 2012

Accidental	180	43%	
Arson	113	27%	
Undetermined	125	30%	





Minneapolis Fire Department

2012 Emergency Medical Service

Incident Types

(includes mutual aids)



Incident Type

EMS call, excluding vehicle accident with injury	10,393
EMS – Arrive & cancelled before patient contact or no patient contact	8,772
EMS – Assist medics, did not provide any BLS treatment	3,507
Motor vehicle accident with injuries	435
Medical assist, assist EMS crew	344
Motor vehicle accident with no injuries	261
EMS – DOA (no BLS provided)	205
Removal of victim(s) from stalled elevator	165
Motor vehicle accident w/injuries – no patient contact	160
Lock-in	134
Motor vehicle/pedestrian accident	126
Motor vehicle vs. self-propelled (bike, wheelchair)	100
Search for person in water	10
Extrication of victim(s) from machinery	10
Swift water rescue	9
Watercraft rescue	9
Swimming/recreational water rescue	8
Extrication of victim(s) from vehicle	6
High-angle rescue	4
Extrication of victim(s) from building/structure	3
Trench/below-grade rescue	3
Rescue, EMS incident, other	2
Ice rescue	1
Electrocution or potential electrocution	1
Total	24,668



Minneapolis Fire Department

2012 Emergency Medical Service

Chief Patient Complaint

Chief Complaint

Respiratory distress	1,868
Chest pain	1,457
Altered level of consciousness	1,293
Trauma	1,189
Impression/assessment, other	839
Seizure	662
Hemorrhaging/bleeding	582
Pain, general	536
Syncope, fainting	341
Back pain	274
Stroke/CVA	257
Abdominal pain	243
General illness	199
Overdose/poisoning	197
Cardiac arrest	192
Flu like symptoms	191
Diabetic symptom	150
Pregnancy/OB	125
Behavioral/mental status, psychiatric disorder	121
Cardiac dysrhythmia	111
Headache	107
Allergic reaction, excludes stings & venomous bites	80
Vaginal bleeding	46
Respiratory arrest	39
Airway obstruction	35
Suicide attempt	34
Burns	15
Obvious death	10
Sting/bite	7
Eye problem	6
Hyperthermia	5
Hypothermia	4
Electrocution	2
Do not resuscitate	1
Hypovolemia	1
Inhalation injury, toxic gases	1

Total 11,220



Minneapolis Fire Department

2012 Training Division Report

Company Level & Training Division Classes



Company Schools – Total Hours	50,832
Hours of Training per Employee	132

Administrative – 727 hours

MFD Communications
Employee performance appraisal
Intersection Safety

Firehouse Software Training
Visinet Mobile Training

Basic Practices – 24,483 hours

Self-Contained Breathing Apparatus
Advancing Lines
Replacing Burst Section
Hose Loading and Bundles
Straight Beam Ladders
30-35 Ft. Extension Ladders
Using Ladders to Advance Lines
High Rise Operations
Back Stretching Hose
Elevate Hose Lines
Aerial Standpipe
Raise Equipment
RIT

Ladder Rescues
Rescue Basket
Ventilation
Life Rope Slide
Master Streams
Relay Operations
Sprinkler Systems
Foam Equipment
FMO Manual
May Day
Boarded Vacant Buildings
Daily Safety Briefing

EMS Company Schools – 2,793 hours

Airway Management & Equipment
Defibrillator Operation
Automatic B/P Monitor Operations
SOPs for Transferring Medical 02
Patient Care Guidelines
Infection Control Policy
Introduction to EMS
Well Being EMS
Medical/Legal EMS Issues
Human Body
Baseline Vital Signs
Lifting & Moving Patients
Airway Management
Patient Assessment
Communications
Pharmacology
Respiratory Emergencies
Cardiovascular Emergencies
Neurological Emergencies

Acute Abdomen
Diabetic Emergencies
Allergic Reactions
Substance Abuse/OD
Environmental Emergencies
Behavioral Emergencies
OB/GYN
Kinematics of Trauma
Bleeding
Shock
Soft Tissue Injuries
Eye Injuries
Face & Throat Injuries
Chest Injuries
Abdominal & Genital Injuries
Musculoskeletal Care
Head & Spine Injuries
Pediatric Assessment
Pediatric Medical



Minneapolis Fire Department

2012 Training Division Report

Company Level & Training Division Classes



Pediatric Trauma
Geriatric Assessment
Ambulance Operations
Gaining Access to Patient
Special EMS Operations
BLS Review
NREMT Skills – PA Trauma
NREMT Skills – Joint Splinting
NREMT Skills – Spine Immobilize
Infectious Diseases
Bloodborne Pathogen Training

Communicable Disease
Biological Terrorism
EMS Safety Topic
CPR Devices Study
Updated CPR Guidelines
Walk for VO2 Fitness – Rockport Test
MFD Functional Weight Training Program
Basic Animal Rescue Training
Anaphylaxis

Essentials of Firefighting – 2,498 hours

Firefighter Orientation and Safety
Fire Behavior
Building Construction
Firefighter Personal Protective Equipment
Portable Extinguishers
Ropes & Knots
Rescue & Extrication
Forcible Entry
Ground Ladders
Ventilation
Water Supply
Fire Hose

Fire Streams
Fire Control
Fire Detection, Alarm and Suppression Systems
Loss Control
Protecting Evidence for Fire Cause Determination
Fire Department Communications
Fire Prevention & Public Fire Education
Fire Service Elevator Operation
Using Resources to Test Your Hypothesis

Hazardous Materials – 1,895 hours

Introduction to Hazardous Materials
Managing the Hazardous Materials Incident
Explosive Emergencies
Gas Emergencies
Understanding Cryogenics
Responding to Compressed Gas Emergencies
Responding to Cryogenic Gas Emergencies
Flammable & Combustible Liquid Emergencies
Flammable Solid Emergencies
Oxidizer Emergencies
Responding to Oxidizer Emergencies

Poison Emergencies
Responding to Poison Emergencies
Radioactive Emergencies
Understanding Radioactive Emergencies
Responding to Radioactive Material Emergencies
Responding to Corrosive Emergencies
Miscellaneous Hazardous Materials Emergencies
Spills: Open Water, Moving Water, Sewer Systems
WMD Response
Decontamination – Set Up, Solutions, Trailer Operations



Minneapolis Fire Department

2012 Training Division Report

Company Level & Training Division Classes



MFD Lesson Plans – 4,580 hours

Driver Training, Truck	Refilling SCBA Bottles & Compressor
Elevator Escape & Rescue	Ropes & Knots
Procedures	Salvage & Overhaul
Fire Department Connections	Saws-all
Fire Detection & Alarm Systems	Self Contained Breathing Apparatus
Fire Hose	Station Journals
Fire Service Terminology	Target Saw/K12 Operations
Foam Equipment and AFFF	Vehicle Accidents (involving MFD apparatus)
Forcible Entry	Ventilation Operations
Glassmaster Tool	Water Rescue Operations
Hurst Tool Operations	Scott Thermal Imager
Ladders, Care & Maintenance	MSA Thermal Imager
Light Plan Uses and Operations	Hydra Ram
MFD Rescue Boat Operations	Quint Operations
Multiple Alarm Procedures	Aerial Platform Operation
Natural Gas Emergencies	Incident Critique
Personal Protective Equipment	Streets & Routes
Portable Fire Extinguishers	SORD Training
Public Relations	Motorola 800 MHz
Rapid Intervention Team Operations	

Monthly OSHA Hazmat and Safety Topics – 895 hours

Coping with WMD Attacks	E85
Air-Purifying Respirator	Flashover
PPE and Scene Safety	Ventilation
Identifying Materials	Structural Collapse
Air Monitoring	Vehicle Accidents/Lessons
Officer Safety – New Suicide Technique	Natural Gas
Arrival and Size-Up	Swift Water Rescue
CBRNE	Fundamentals of Attack Lines
Air Monitoring	Ground Ladders
Refrigerant Emergencies	Search Guidelines
Scene Safety Considerations	Forcible Entry Review
PAR	Terminology Clarification
New Fire Ground SOP	Fire Hose Basics
Safety and Risk Management	Cold Weather Operations
Work Injuries	Ice Rescue
Glued Trusses	NFPA Ratings
Alternative Fueled Vehicles	Hazard Placards
APRs	Reading Smoke
Rail Crossing Safety	Whooping Cough
Hybrid Vehicle Safety	Anaphylaxis
Heat Exposure	New Extrication Equipment
Rope Care	HCMC Stryker Power Load System
Mayday	Cold Weather Firefighting



Minneapolis Fire Department

2012 Training Division Report

Company Level & Training Division Classes



Fire Operations Manual – 2,576 hours

Organization of the Fire Department
Harassment Policy & Investigative
Procedures
Station Duty
Apparatus & Equipment
Arson & Fire Investigation
Fire Prevention
Reports & Records
Fire Department Communications
Uniforms & Grooming

General Operations
Emergency Duty
Incident Command
Hazardous Materials & Incident
Response
Basic Practices
EMS SOPs
Infection Control Plan
Job Descriptions

Urban Search and Rescue – 375 hours

Confined Space Rope Systems
Confined Space
Breaching and Breaking
Cutting and Burning
Air Bags

Anchoring Systems
Patient Packaging
Raising & Lowering
Ropes
Operational Planning

Water Rescue – 1,323 hours

Ice Rescue
MFD Rescue Boat 4
MFD Rescue Boat 22
Open Water Rescue

River Rescue
MFD Air Boat 21
Emergency Management Boat School
MFD Rescue Boat 12

Defensive Driving – 404 hours

Defensive Driving Tactics at EOTF
Defensive Driving Academic Course at
EOTF

DCTC Emergency Response Driving
Academic Course
DCTC Emergency Response Drivin

EMS Continuing Education Classes – 4,544 hours

King Airway & Polst SOP
3 ECHO/Random Skill Bleeding
Control

Autism/3 ECHO/HP CPR
Lectures/Pt. Assess
OB, Pt. Assess, Med, HPCPR-CAM

Medical – 7 hours

Spinal Injuries

Carbon Monoxide: The Odorless Killer

Conferences – 627 hours

Captains Conference
Captain Promotional Orientation

BC Promotional Conference



Minneapolis Fire Department

2012 Training Division Report

Company Level & Training Division Classes



Miscellaneous Training – 3,106 hours

Engine Functions
2012 Genesis Rescue Systems
Truck Functions
HOT Auto Extrication
Hazmat Operations
NFPA 1033 and our Career
Mass Casualty Incident Van Training
Outside Training/Seminar
ISO Training
MN DOH Hazmat Sampling
Hybrid Training

Rope Maintenance
Airboat Training
Boat Training
Confined Space Awareness
Rope Awareness
Rescue Crewmember
Special Responses for Special Events
Calling the Mayday
Understanding and Handling Electrical
Emergencies



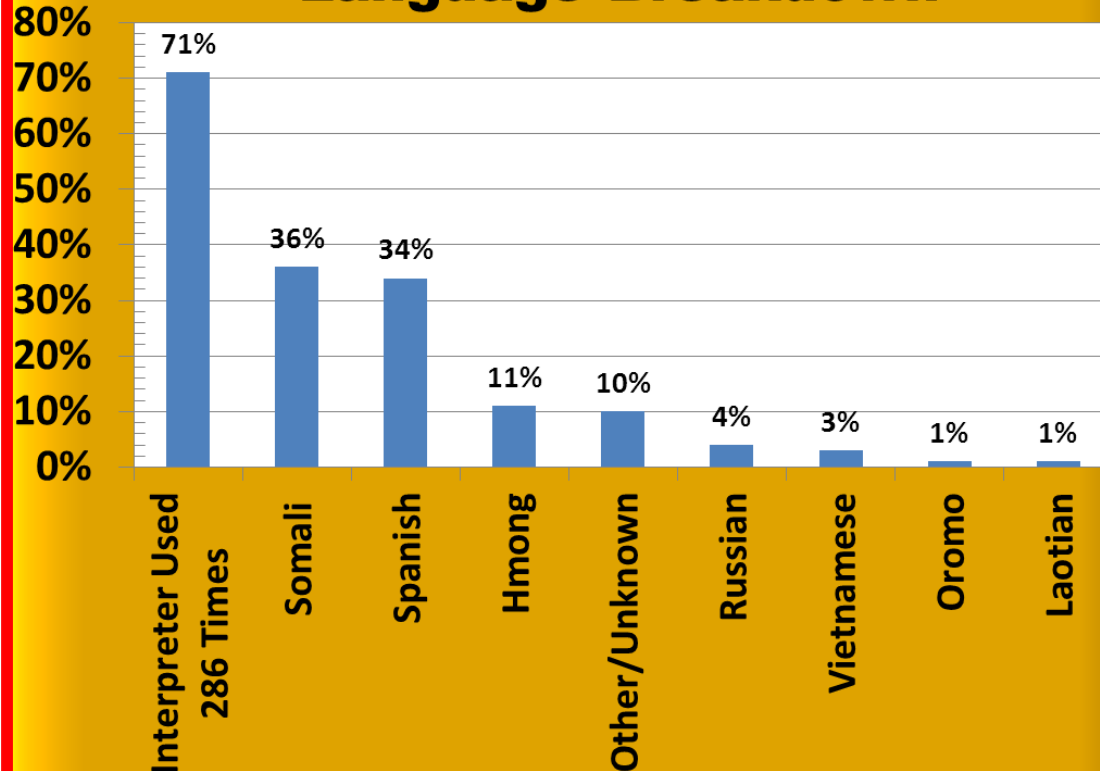
Minneapolis Fire Department 2012 MFD Limited English Proficiency Incidents

<u>Total Limited English Proficiency Runs</u>	402	
<u>Total Runs Where Interpreter Was Used</u>	286	71%

Interpreter Type Used

Family Member	182	64%
Bystander	56	19%
MFD Personnel	37	13%
Language Line	11	4%

Language Breakdown



Total (LEP) Runs 402



Minneapolis Fire Department

2012 MFD Equipment List

<u>Station</u>	<u>Unit</u>	<u>Apparatus #</u>	<u>Type</u>	<u>Notes</u>
1	E1	71402	Pumper	2004 General/SP
1	MCV	72524	Pierce	2003 Pierce
1	MCV/SUV	72377	Tahoe	2004 Chevrolet Tahoe
1	Duty Deputy	72387	Suburban	2008 Chevrolet Suburban
2	E2	71804	Quint	2004 General/SP
2	BC	72397	Tahoe	2010 Chevrolet Tahoe
2	Task Force Boat	72549		2008 Rescue One Connector Boa
2	Task Force Boat	72550		2008 Rescue One Connector Boa
2	Task Force Trailer	72548		2008 Haul Rite Trailer
4	E4	71404	Pumper	2004 General/SP
4	L4	71340	Ladder	1998 Sutphen Aerial
4	Boat 4	72374	Truck & Boat	2004 Ford & boat
5	E5	71407	Pumper	2008 Pierce Arrow XT
5	Salvage	72525		2003 Sterling
6	E6	71409	Pumper	2009 Pierce Arrow XT
6	L11	71301	Ladder	2004 Pierce Dash Platform
6	R1	72522	Rescue	2000 Pierce Lance 2000
6	BUP	72382	Pick-up	1997 Ford F350
7	E7	71408	Pumper	2008 Pierce Arrow XT
7	L3	71011	Ladder	2001 Pierce Dash 2000
7	BC	72396	Tahoe	2010 Chevrolet Tahoe
8	E8	71401	Pumper	2004 General/SP
8	USAR/Collapse	71020	Truck #3	1990 IHC Pirsch
8	USAR	72533	Trailer #3	2002 Mickey AT-A
11	E11	71405	Pumper	2004 General/SP
11	R9	72523	Rescue	2002 Pierce Lance
11	Mobile Lab	72536	Haz Mat	2006 IHC
12	E12	71430	Pumper	1998 Freightliner
12	Boat 12	72361	Truck & boat	1999 Ford Explorer & boat
12	Spare L12	71320	Ladder	1996 Sutphen Hale
14	E14	71403	Pumper	2004 General/SP
14	L10	71012	Ladder	2001 Pierce Dash 2000
14	USAR/Collapse	72526	Truck and Trailer, Unit 1	2005 Freightliner



Minneapolis Fire Department

2012 MFD Equipment List

<u>Station</u>	<u>Unit</u>	<u>Apparatus #</u>	<u>Type</u>	<u>Notes</u>
15	E15	71801	Quint	2004 General/SP
15	HCMC		Medics	
16	E16	71470	Pumper	1998 Freightliner
16	Blue Dragon	72021	heater	1999 Blue Dragon
16	EAP	72379	Yukon	2005 GMC Yukon
17	E17	71408	Pumper	2008 Pierce Arrow XT
17	BC	72395	Tahoe	2010 Chevrolet Tahoe
19	E19	71480	Pumper	1999 Freightliner
19	Decon 24'	72023	Trailer	2003 Wells Cargo trailer
19	Decon 50'	72024	Trailer	2003 Wells Cargo trailer
19	Decon tow veh	72500	Flat bed	
19	Decon tow veh	71030	50' tractor	1990 IHC Pirsch
19	Engineering Officer	72385	Tahoe	2007 Chevrolet Tahoe
20	E20	71805	Quint	2004 General/SP
20	Hackney, Task	72528	30' trailer, unit 2	2005 Hackney
20	Hackney, Task Force	72527	5th wheel collapse tractor unit 2	2005 Spartan
21	E21	71580	Pumper	
21	L2	71802	Ladder	2004 General/SP
21	Air Boat	72713	Type 4 airboat	2005 American Air Ranger
21	Trailer	72714	Bunk Trailer	2005 American trailer
22	E22	71450	Pumper	1998 Freightliner
22	Arson	72384	Tahoe	2007 Chevrolet Tahoe
22	Boat 22	72363	Truck and trailer	1999 Ford Expedition
27	E27	71440	Pumper	1998 Freightliner
27	L5	71803	Ladder	2004 General/SP
27	Rehab/MCI	72551	Rehab/MCI	1995 Spartan
27	HCMC		Medics	
28	E28	71460	Pumper	1998 Freightliner
28	Bus	72610	Bus	1981 IHC

