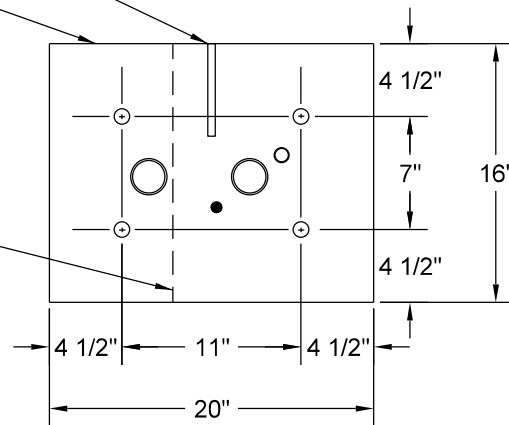


1/4" x 1/4" x 5"
DRAIN TROUGH

STREET SIDE

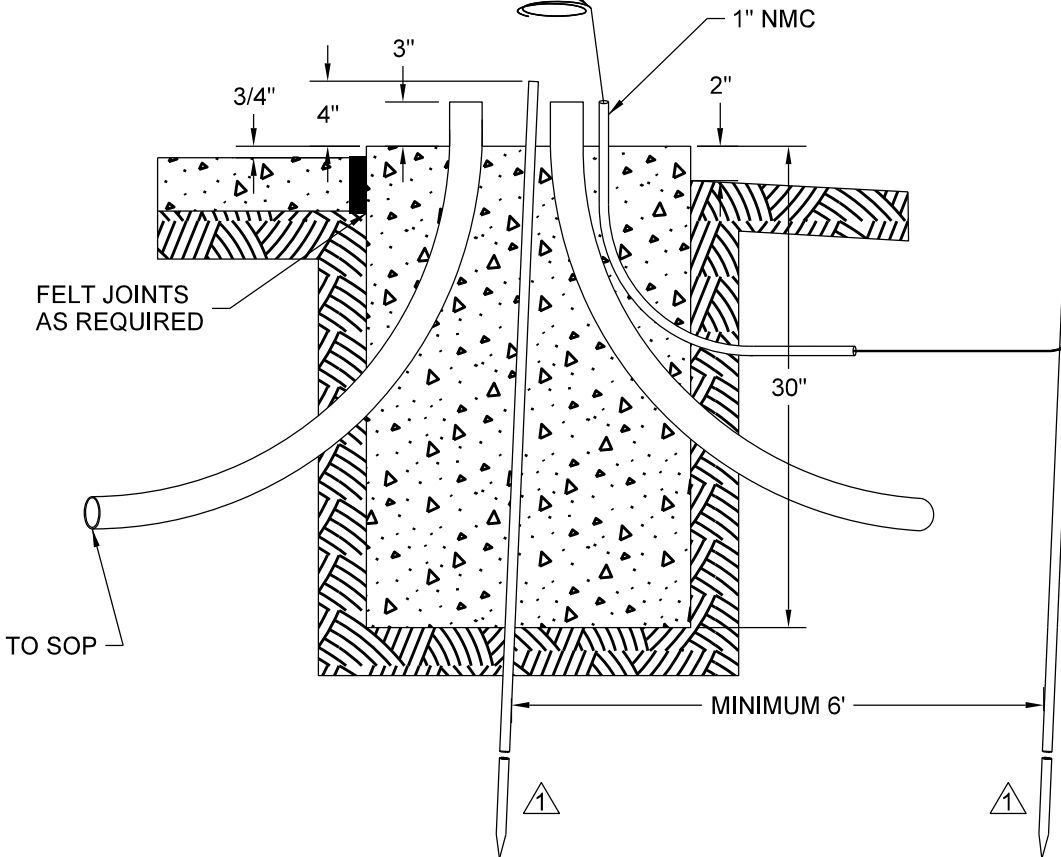
CABINET BARRIER



NOTES:

- 1 TWO GROUND RODS (1/2" X 8') ARE REQUIRED ON ALL SERVICE CABINETS.
- 2 PROVIDE PROTECTIVE BUSHINGS ON ALL CONDUITS
- 3 FOUNDATION TOP SHALL HAVE SQUARED EDGES.
- 4 ALL FOUNDATION LOCATIONS SHALL BE DETERMINED IN FIELD BY TRAFFIC DIVISION AT TIME OF CONSTRUCTION.
- 5 CABINET ANCHORS ARE HILTI KWIK BOLT II WEDGE ANCHORS OR EQUAL 4 PER CABINET, 1/2" X 4 1/2" STAINLESS STEEL (#304) FULL THREADED.

#6 SOLID BARE COPPER TO
GROUND ROD W/ 24" TAIL



NO SCALE



DRW: BKK

DATE: 04/12/18

APP: DRP

DATE: 04/02/18

FOUNDATION - SIGNAL
SERVICE CABINET

STANDARD
PLATE
NO.
TRAF-1084-R1