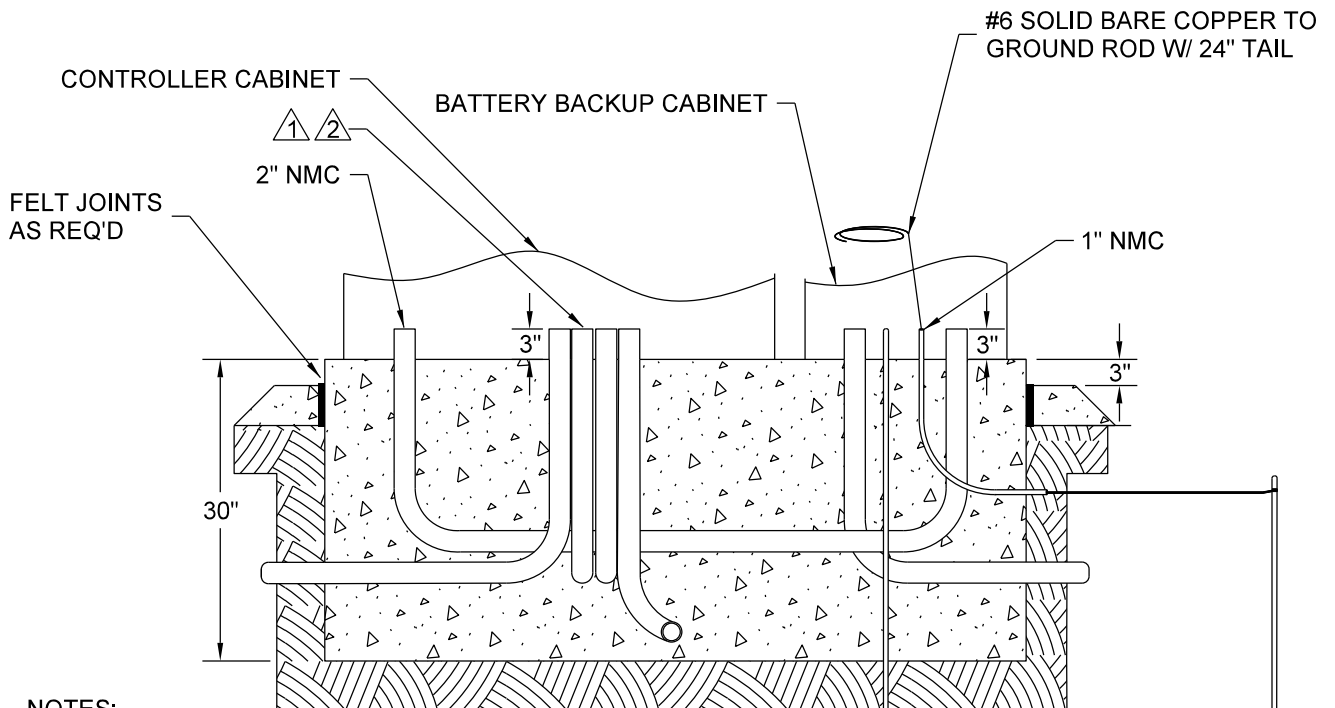
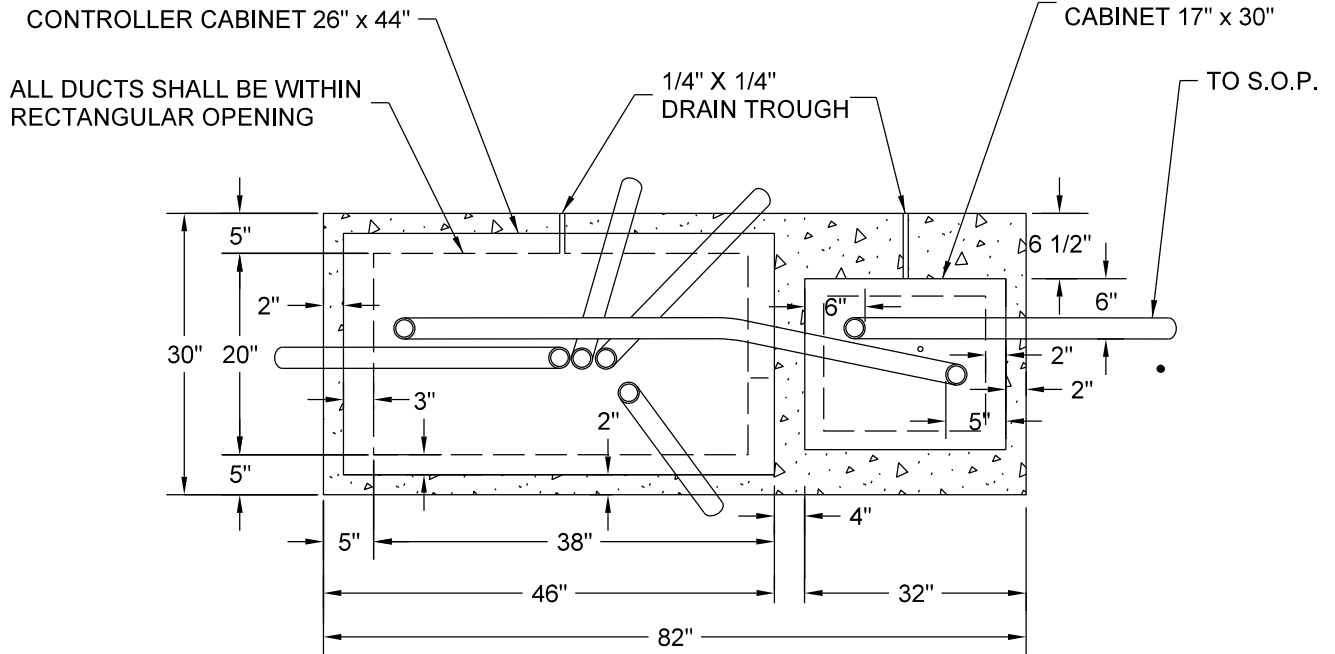


**STREET SIDE**



**NOTES:**

1. CABINET ANCHORS ARE HILTI KWIK BOLT II WEDGE ANCHOR OR EQUAL, 4 PER CABINET, 1/2" X 4 1/2" STAINLESS STEEL (#304) FULL THREADED.

- ① PROVIDE PROTECTIVE BUSHINGS ON ALL CONDUITS
- ② ELECTRICAL CONDUITS AS SPECIFIED
- ③ TWO GROUND RODS (1/2" X 8') AS REQUIRED BY N. E. C.

MINIMUM 6'

NO SCALE



DRW: BKK DATE: 8/20/17  
 APP: DRP DATE: 8/20/17

FOUNDATION - SIGNAL  
 CONTROLLER CABINET TYPE "P"  
 W/BATTERY BACK-UP

STANDARD  
 PLATE  
 NO.  
 TRAF-1073-R2