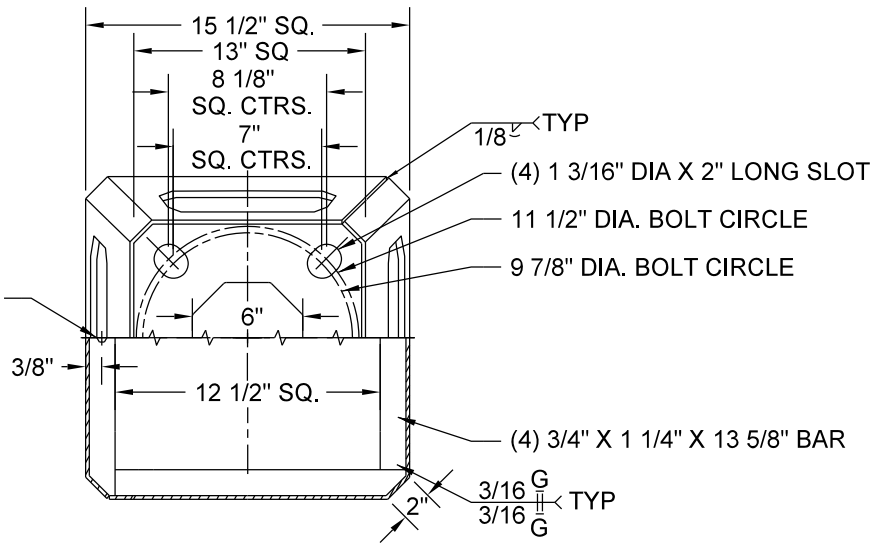
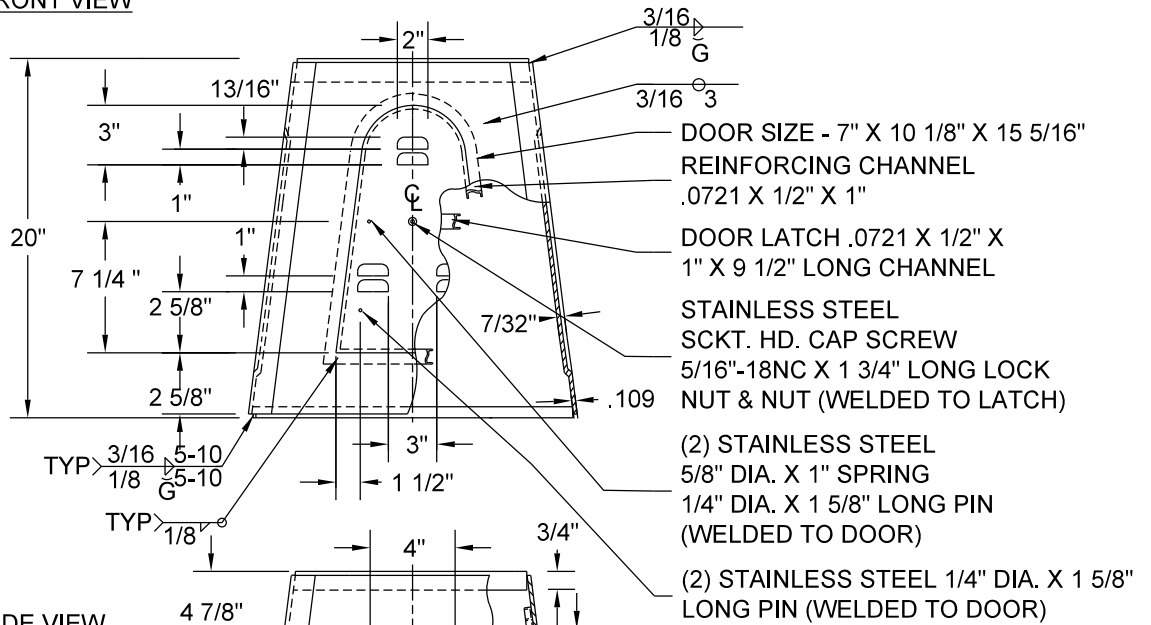


TOP VIEW

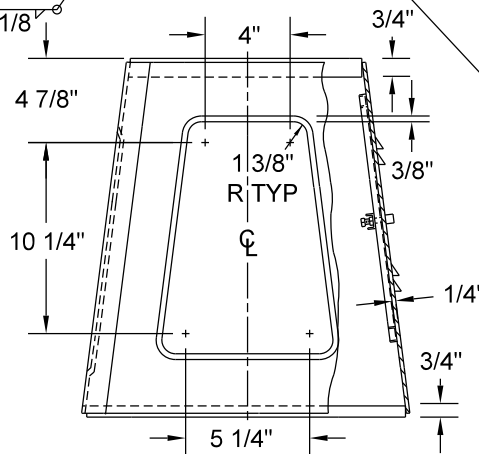
5/16"-18NC TAPPED HOLE  
W/5/16"-18NC X 3/4" LONG  
HEX HD. CAP SCREW (S.S.)  
& (2) BRASS WASHERS



FRONT VIEW



SIDE VIEW



**NOTE:**

1. SKIRT & BOTTOM PLATE MATERIAL- STAINLESS STEEL (TYPE 201) 60,000 PSI MIN. YIELD AFTER FABRICATION. TOP PLATE MATERIAL- LOW CARBON STEEL 36,000 PSI MIN. YIELD.
2. FINISH-EPOXY PRIMER
3. FINISH-UPS BROWN THERMO-SET ACRYLIC

NO SCALE



DRW: LPK

DATE: 1/1/11

APP: DRP

DATE: 1/1/11

BASE - ST. LIGHT  
TRANSFORMER 30'

STANDARD  
PLATE  
NO.  
TRAF-3160