

NOTES:

EXTRA BOTTOM BARS PLACED ADJACENT TO ACCESS HOLE.

MINIMUM 1 1/2" COVER ON STEEL BARS.

THREE LIFTING CABLES PLACED AT 120° USED ON COVERS SMALLERS THAN 60" UNLESS SPECIFIED.

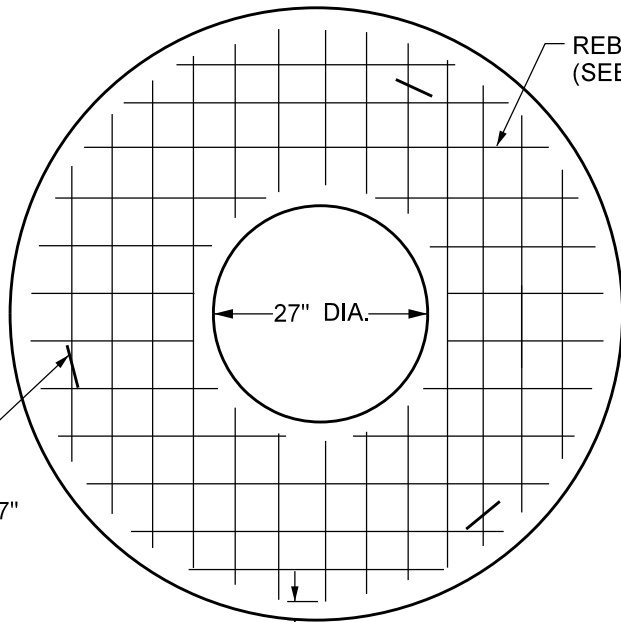
TYPE II COVERS CAPABLE OF CARRYING A 9000 LB. WHEEL LOAD.

PROVIDE FULL MORTAR BED.

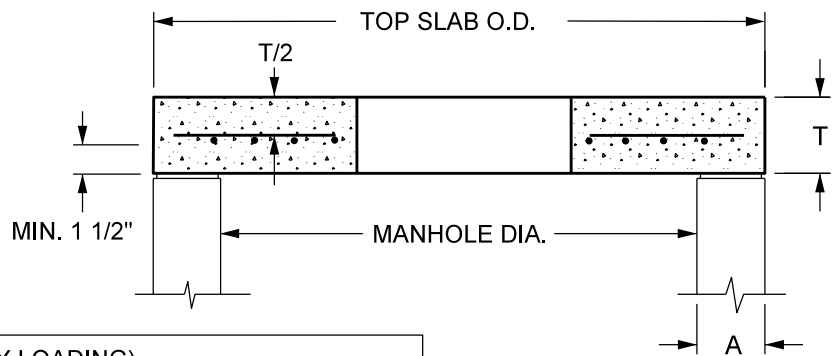
ALL REBARS ARE IN ENGLISH DESIGNATIONS.

LIFTING CABLE

REBAR (SEE CHART)



1 1/2 CLR.



TYPE II (ROADWAY LOADING)

MH DIA. (in.)	TOP SLAB O.D. (in.)	WEIGHT OF SLAB (lbs.)	"T" (in.)	"A" (in.)	BOTTOM BARS (in.)	TOP BARS (in.)
48	58	1140	6	6	#5 AT 6	
54	65	2000	8	6	#5 AT 6	
60	72	2525	8	7	#5 AT 4	#3 AT 6
66	79	3105	8	7	#5 AT 4	#3 AT 6
72	86	3740	8	8	#5 AT 4	#3 AT 6
78	93	4403	8	8	#5 AT 4	#3 AT 4
84	100	5140	8	9	#5 AT 4	#3 AT 4
90	106	5840	8	9	#5 AT 4	#3 AT 4
96	113	6680	8	9	#5 AT 4	#3 AT 4
102	119	7450	8	9	#5 AT 4	#3 AT 4

MPLS. STD. MH ALTERNATE

MINNEAPOLIS CUSTOM
MNDOT SPEC. REF. 2506
MODIFIED MNDOT 4020I
NOT TO SCALE



DRW: CXD

DATE: 2/03

APP: HRS

DATE: 12/06

27" CENTER HOLE MANHOLE TOP SLAB

STANDARD
PLATE
NO.
SEWR-1005