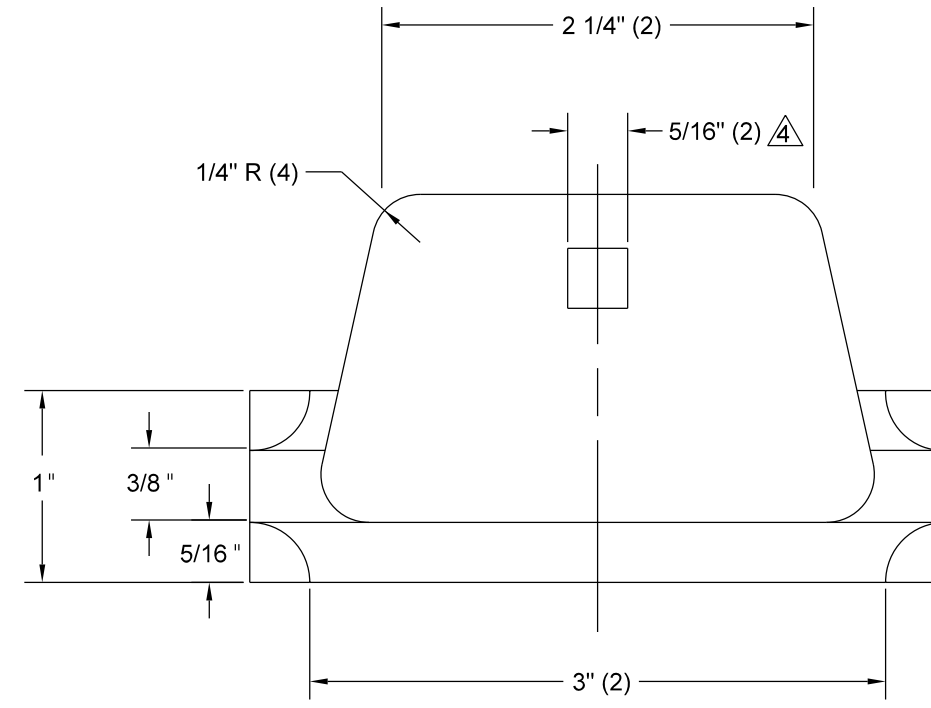


NOTES

1. MATERIAL - GREY CAST IRON - 25,000 PSI MIN - 2 LB APPROXIMATE WEIGHT
2. PATTERN AVAILABLE FROM CITY OF MINNEAPOLIS, TRAFFIC ENGINEERING
ALL DIMENSIONS WITHOUT TOLERANCE FOR REFERENCE ONLY
- ③ VENDOR SHALL SUPPLY WITH 3/8"-16 X 1" CUP POINT SQUARE HEAD SET SCREW
- ④ 3° MAX DRAFT TO INCR DIMENSION
- ⑤ 3° MAX DRAFT TO DECR DIMENSION
6. ALL SHARP CORNERS SHOWN - 0.06" R MAX.
7. INSIDE DIAMETER TO BE FREE OF FLASH AND BURRS



	DRW: CLK	DATE: 10/29/14	BRACKET - SIGN DOUBLE CAST RING FOR 2 1/2" PIPE	STANDARD PLATE NO. TRAF-5100
	APP: DRP	DATE: 10/29/14		