

Exhibit 2: Additional Photographs



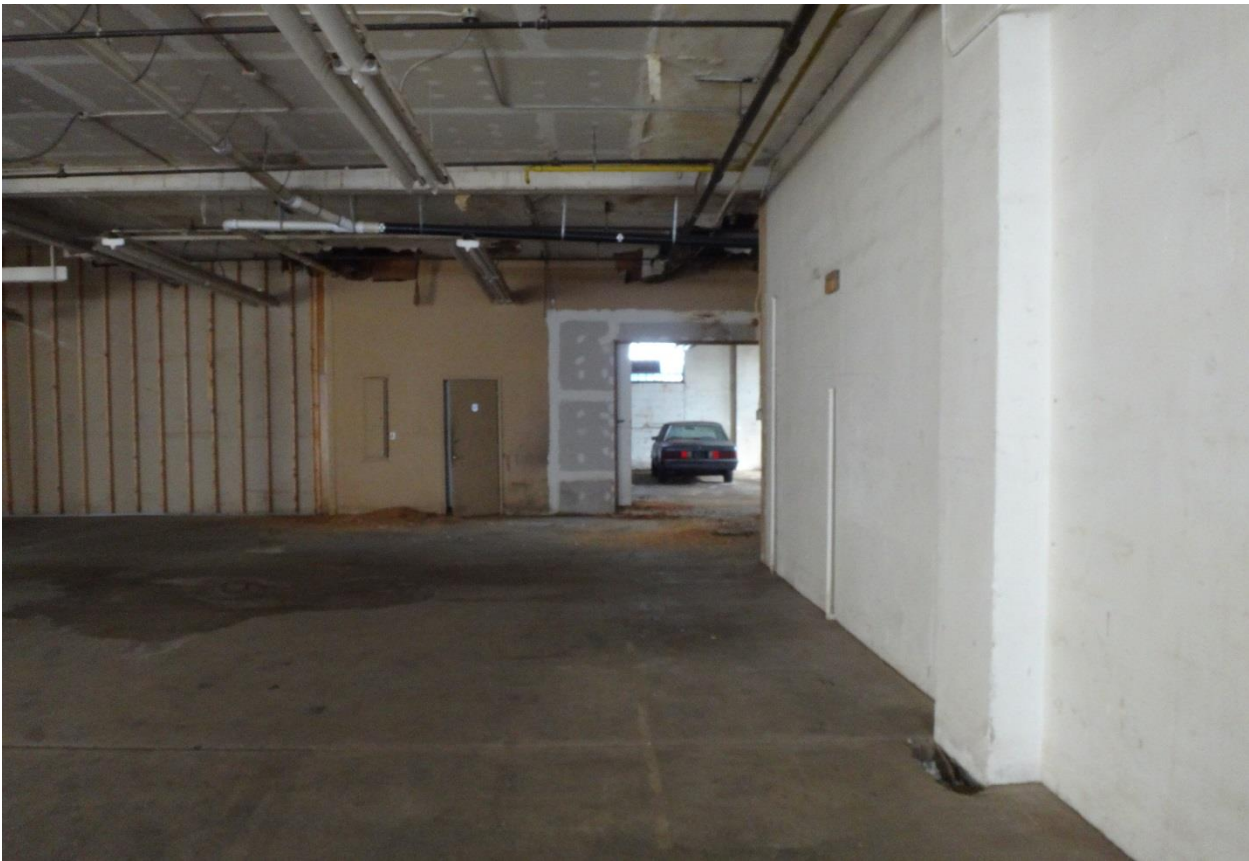
View of sunroom and bedroom in second story apartment, 699 Lowry Ave NE, windows facing Lowry



Second story apartment bathroom, 699 Lowry Ave NE



Center commercial space, 695 Lowry Ave NE, window facing Lowry



Center commercial space, 695 Lowry Ave NE, window at rear facing north



Mechanicals basement of 695 Lowry Ave NE



Utility panels, 695 Lowry Ave NE



Exterior of 695 at corner of Lowry Ave NE and Howard Ave NE