

# PUBLIC SPACE CONCEPT A

## Linear (long rectangular) park along the Midtown Greenway



### OPTION A / KEY DESIGN FEATURES:

The following features can fit in a park of this shape and size. What features in this option do you like most?

1. Two distinct rectangular park spaces on either side of New Nicollet Ave
2. Creating the public park along the Midtown Greenway that encourages the visibility and safety of the Greenway.
3. Pedestrian connection east-west through the park with a mobility hub.

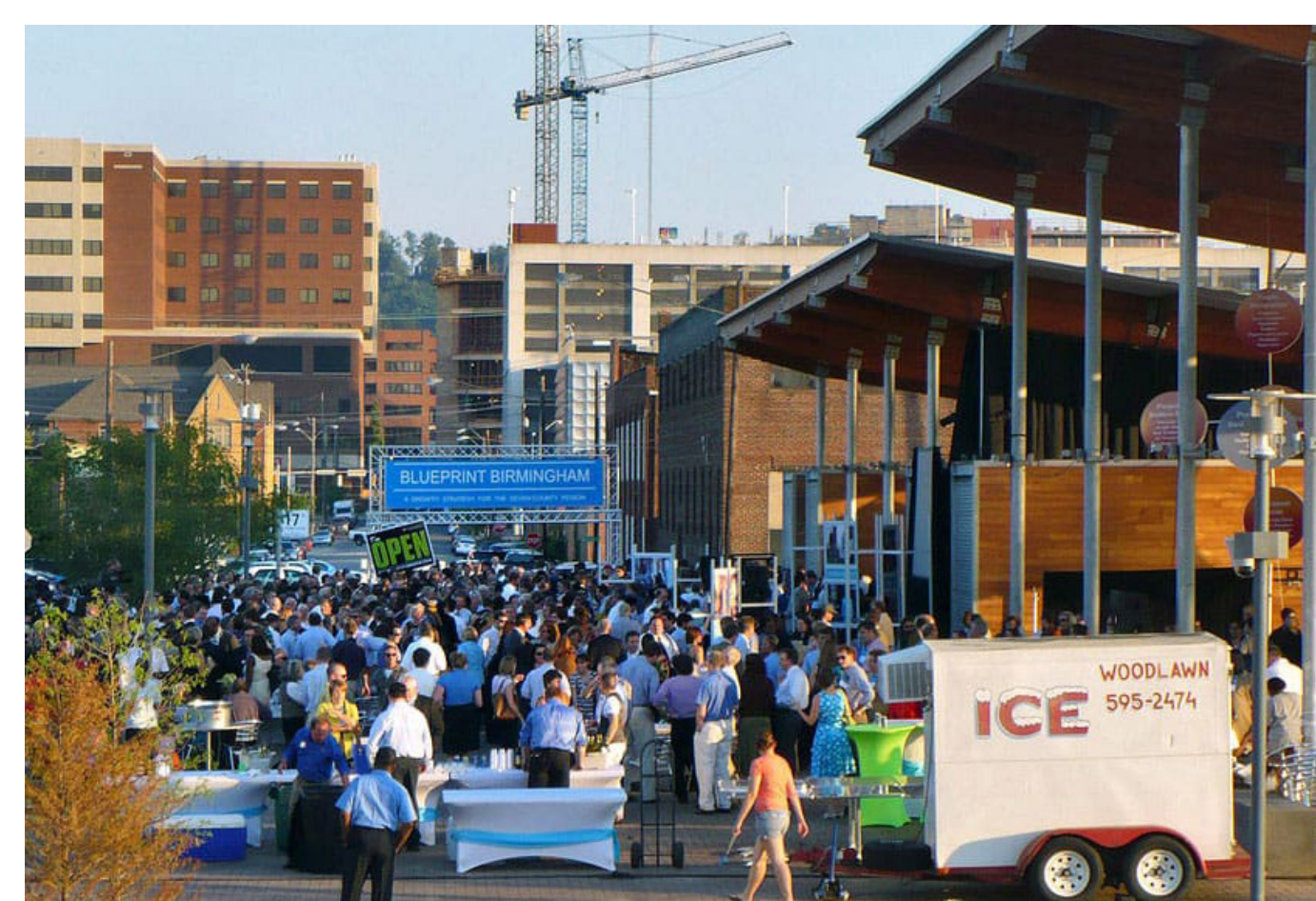
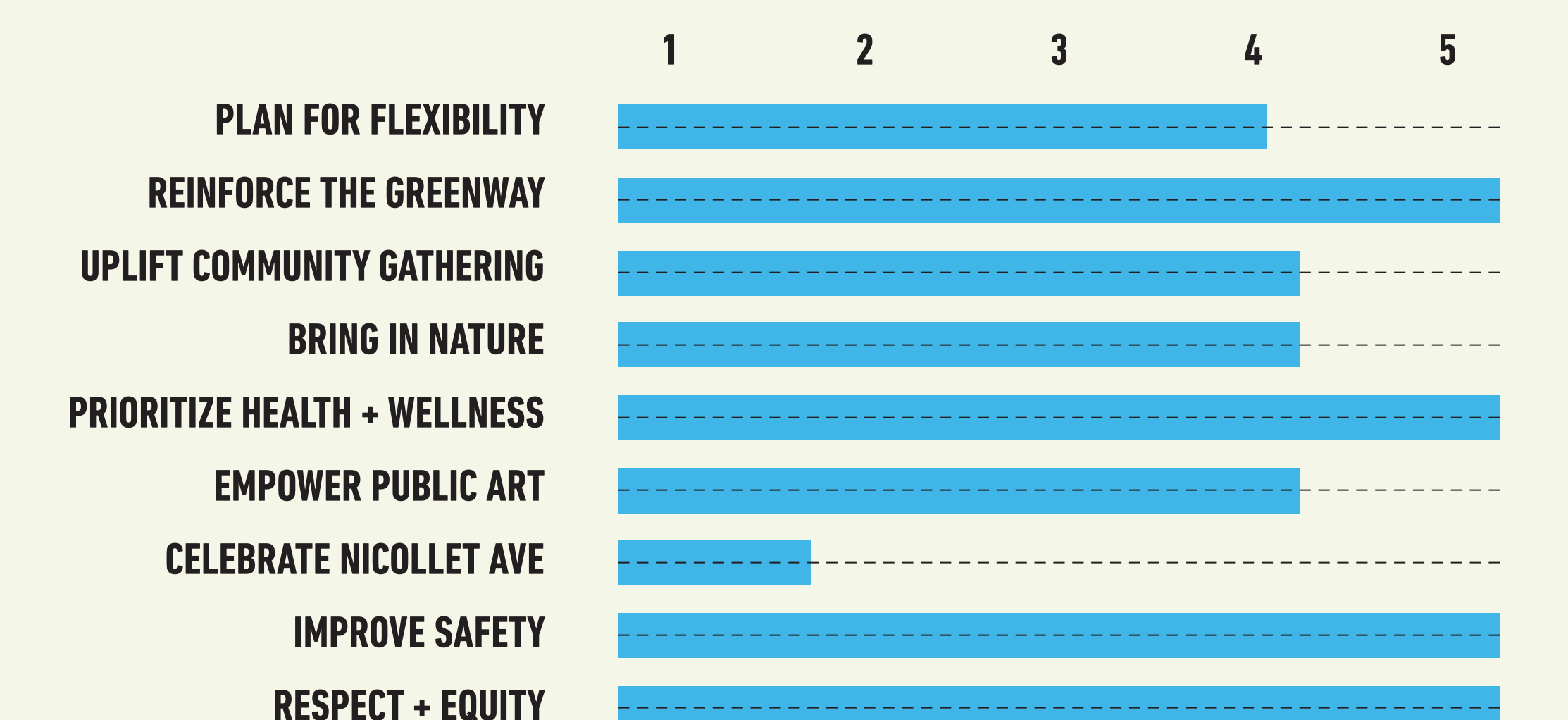
### POSSIBLE FEATURES:

The following features can fit in a park of this shape and size. What features in this option do you like most?

- Flexible event lawn for festivals or informal sports and games
- Medium-sized, covered, flexible plaza for markets and food trucks
- Performance space/stage with amphitheater seating
- Native gardens surrounding the edges of the park
- Medium-sized playground natural play features
- A sports and recreation-oriented side of the park
- Dedicated futsal field (soccer-like game)
- A large sport court (could include half basketball court, skate-able plaza, ping pong, handball, informal soccer, etc.)
- Pathways connecting Blaisdell and 1st Ave for pedestrians and bike
- Public Art

### PHASE II, PART I COMMUNITY VALUES

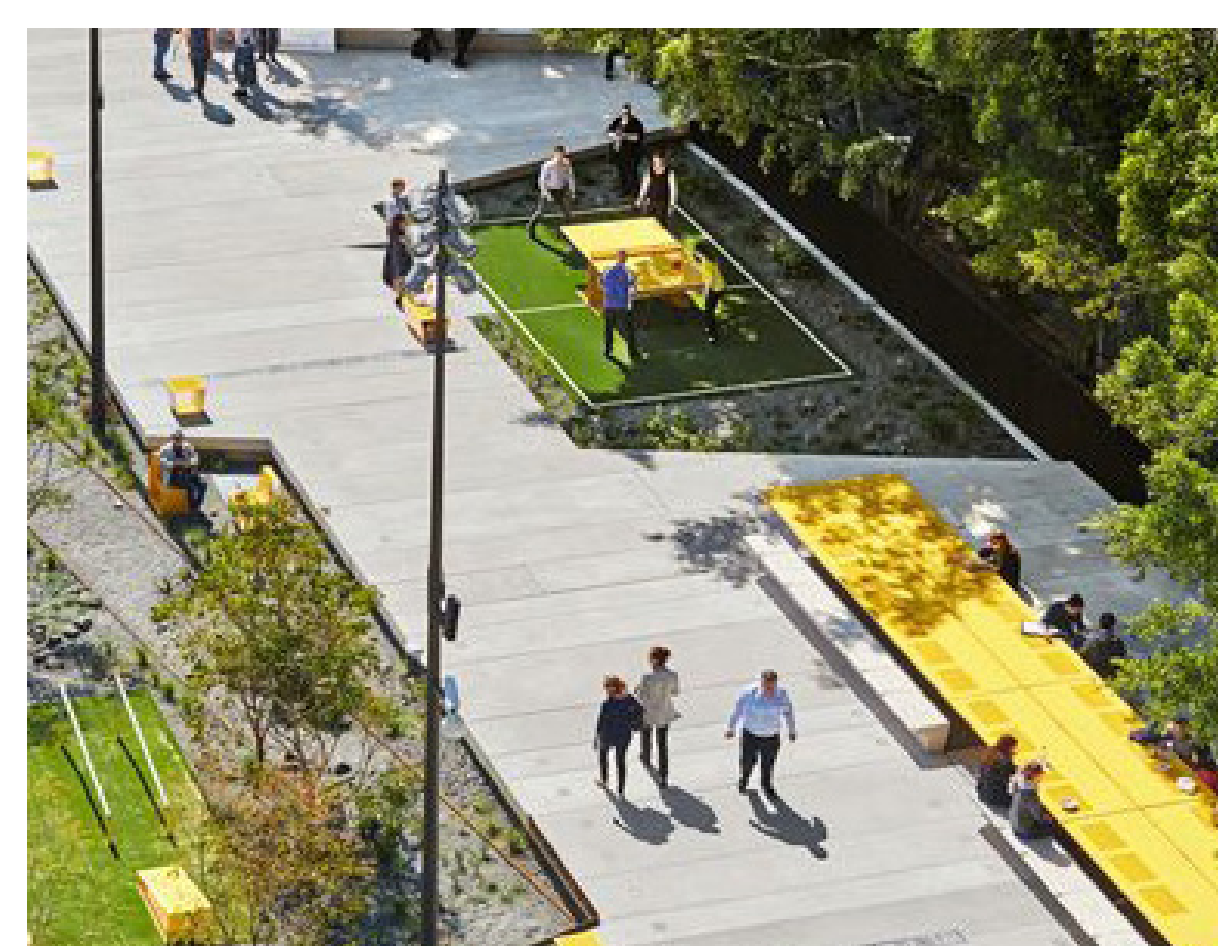
In previous engagement, we heard the following values were important to the community. This option prioritizes these values on a scale of 1-5.



A. COVERED PAVILION SPACE



B. LARGE FLEXIBLE EVENT LAWN



C. PLAYFUL PATH W/ GAMES

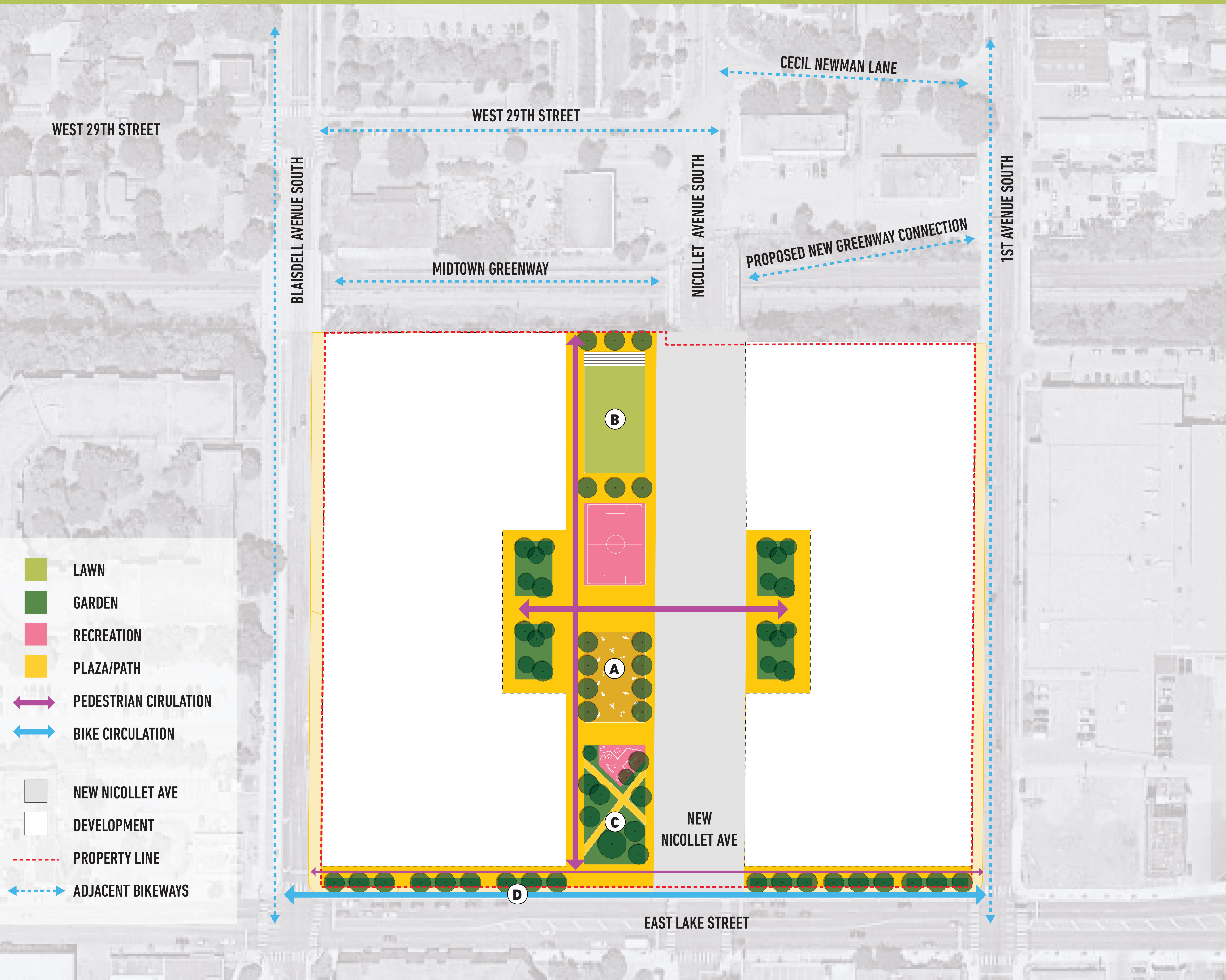


D. SPORT COURT



# PUBLIC SPACE CONCEPT B

## Linear (long rectangular) park along Nicollet Ave



### OPTION B / KEY DESIGN FEATURES:

The following features can fit in a park of this shape and size. What features in this option do you like most?

1. A long, rectangular park that aligns with New Nicollet Avenue
2. Wide pedestrian promenade following retail and restaurants along New Nicollet
3. Formal, protected bikeway on Lake St connecting bikeways on Blaisdell and First Ave.
4. Additional green buffer and pedestrian space on Lake Street.

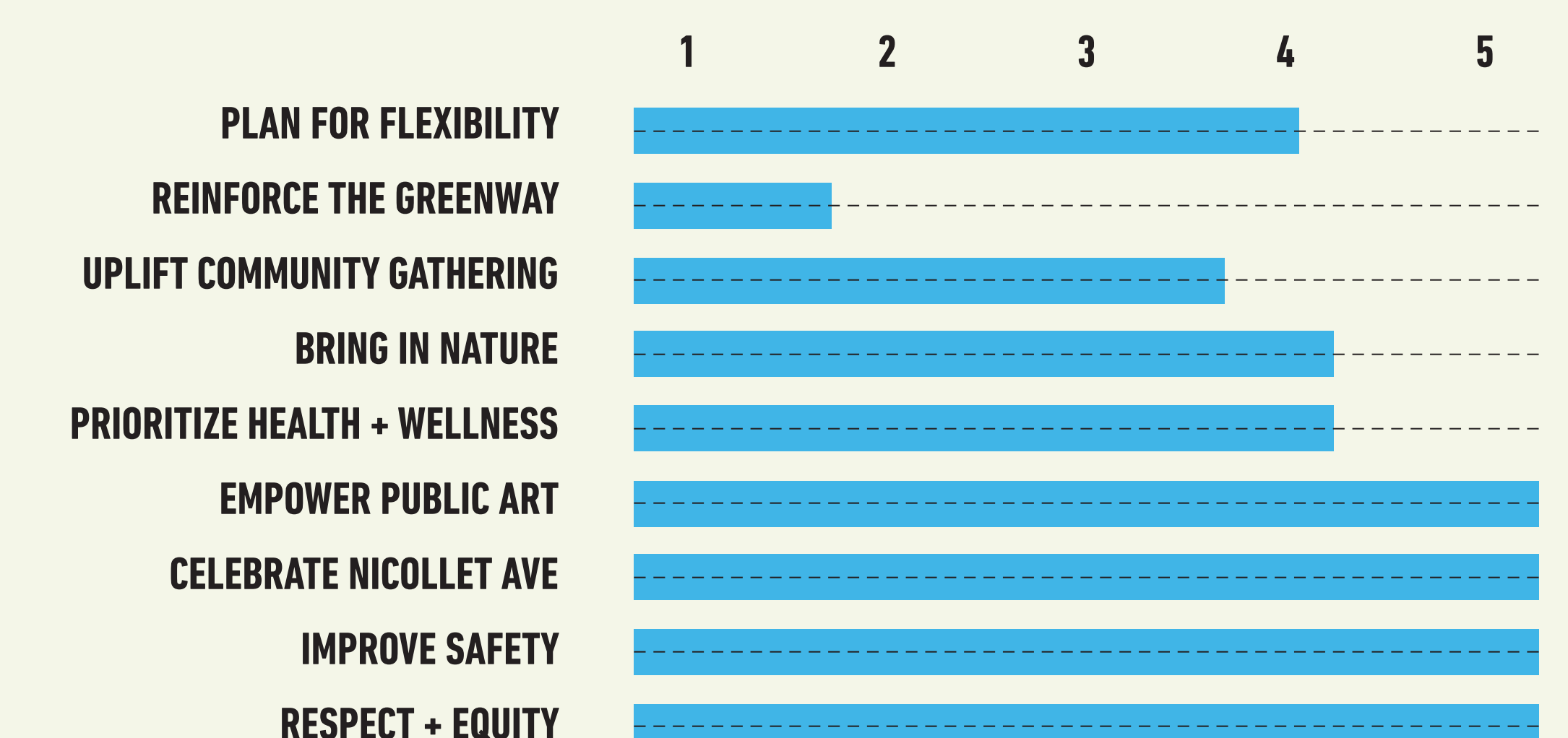
### POSSIBLE FEATURES:

The following features can fit in a park of this shape and size. What features in this option do you like most?

- Wide pedestrian promenade following retail and restaurants along New Nicollet
- Small, flexible gathering lawn for events or performance
- Small sport court (could include informal soccer, games, half basketball court, etc.)
- Dedicated food truck parking
- Performance space/stage
- Small playground with natural play features
- Large planted garden with pathways cutting through
- Small gathering "rooms" surrounded by plants
- Formal bike lane connecting Blaisdell and 1st Ave along Lake St
- Public Art

### PHASE II, PART I COMMUNITY VALUES

In previous engagement, we heard the following values were important to the community. This option prioritizes these values on a scale of 1-5.



A. PERFORMANCE SPACE / STAGE



B. SMALL FLEXIBLE GATHERING LAWN



C. PLANTED GARDENS AND PATHS



D. BIKE LANE FOR EAST/WEST CONNECTION



# PUBLIC SPACE CONCEPT C

## Corner park and diagonal promenade



### OPTION C / KEY DESIGN FEATURES:

The following features can fit in a park of this shape and size. What features in this option do you like most?

1. A typical neighborhood park size and shape for greater flexibility
2. A park next to the Midtown Greenway along the eastern half of the site that encourages the visibility and safety of the Greenway.
3. A secondary pedestrian promenade in addition to Nicollet Ave creates a sightline from 1st Avenue to Blaisdell Ave.
4. Formal bikeway running diagonally connects to the protected bikeways on Blaisdell and 1st Ave and the Greenway entrance
5. Multiple small parks allowing for smaller gathering areas

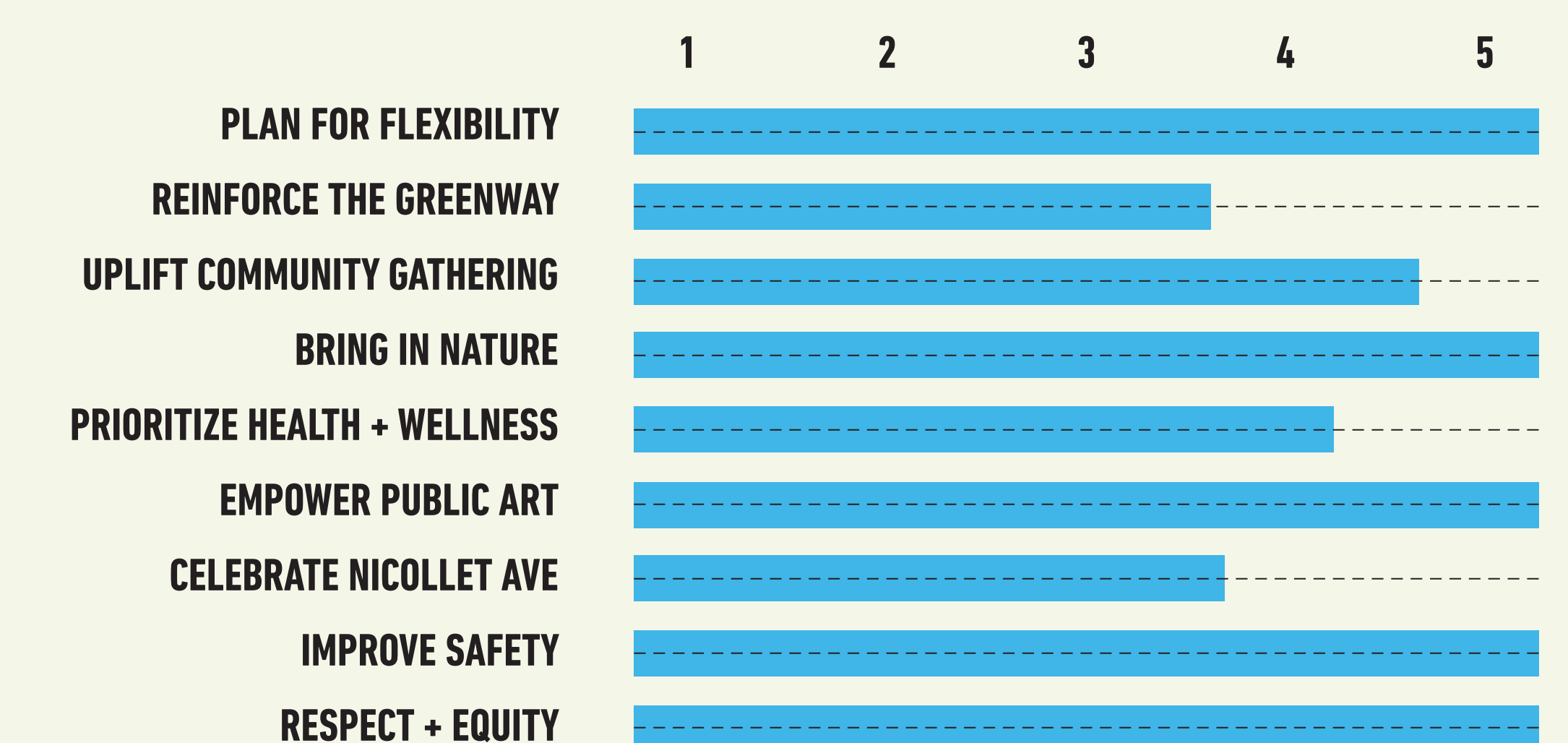
### POSSIBLE FEATURES:

The following features can fit in a park of this shape and size. What features in this option do you like most?

- Flexible gathering plaza with integrated splash pad/water feature
- Diagonal pedestrian promenade
- Community gardening space
- Medium-sized, flexible gathering lawn for events or performance
- Smaller gathering "rooms" surrounded by native gardens
- Formal east/west bike lane connecting Blaisdell and 1st Ave
- Outdoor fitness equipment zone (pull up bars, etc.)
- Medium-sized sport court (could include half basketball court, skateable plaza, ping pong, handball, informal soccer, etc.)
- Mobility hub along 1st Ave
- Public Art

### PHASE II, PART I COMMUNITY VALUES

In previous engagement, we heard the following values were important to the community. This option prioritizes these values on a scale of 1-5.



**A. DIAGONAL PEDESTRIAN PROMENADE**



**B. SMALL GATHERING SPACES IN PLANTING**



**C. COMMUNITY GARDENS**



**D. OUTDOOR FITNESS EQUIPMENT ZONE**