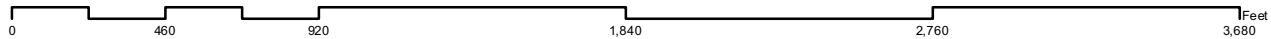


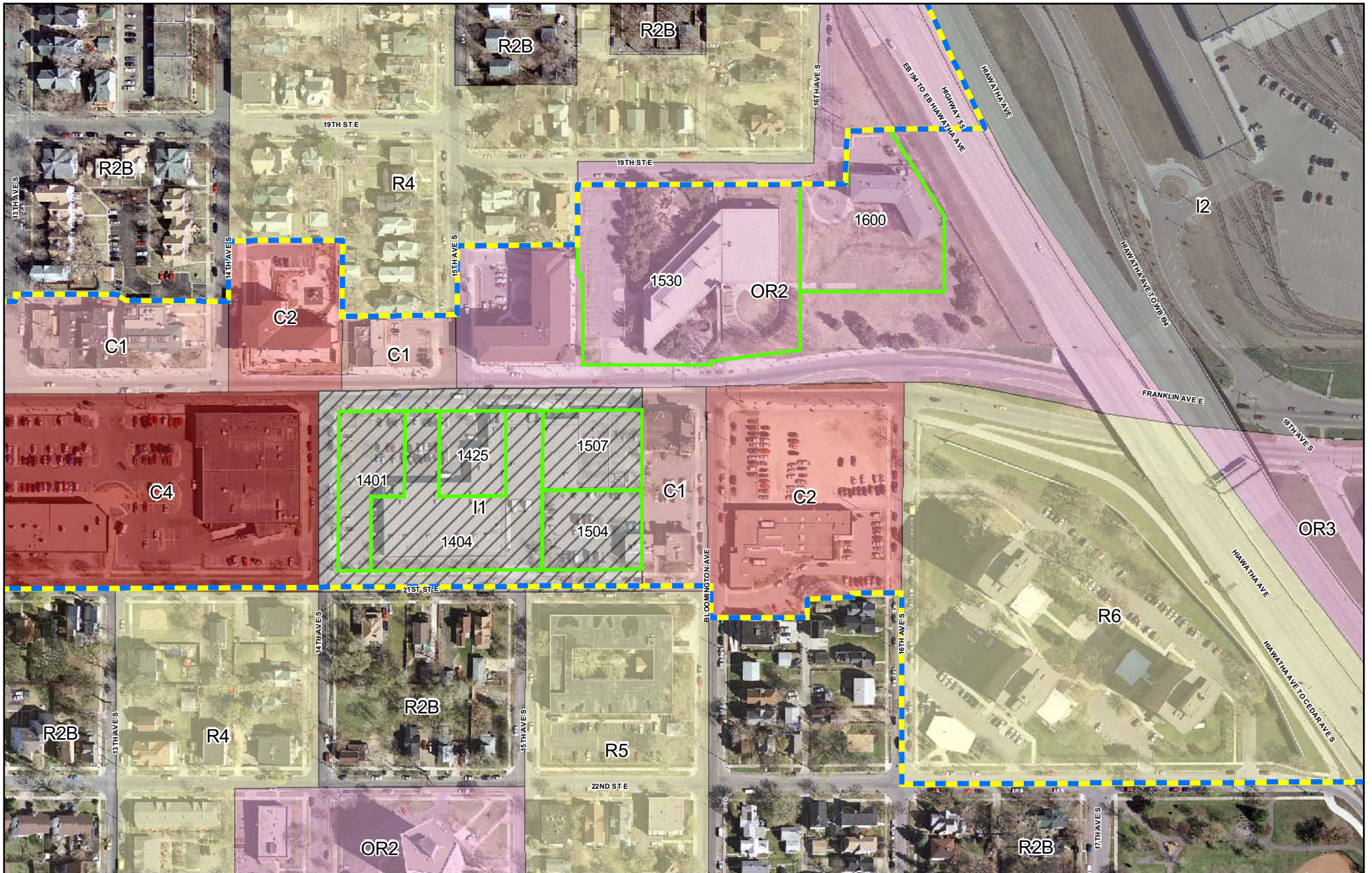
- Study Area
- Parcels with Zoning Change
- C1 and OR1
- C3A
- OR2 and OR3
- R3 to R6
- I2
- Industrial Living Overlay
- C2
- C4
- R1 to R2B
- I1
- I3

**Franklin Avenue  
LRT Station Area Rezoning Study  
Proposed Zoning**

*Note: The North Phillips-NP Overlay District is not impacted by this rezoning study.*

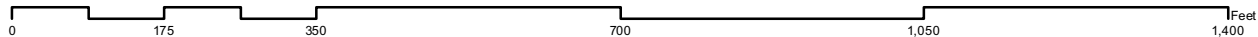


CPED-Planning Division  
March 26th, 2007



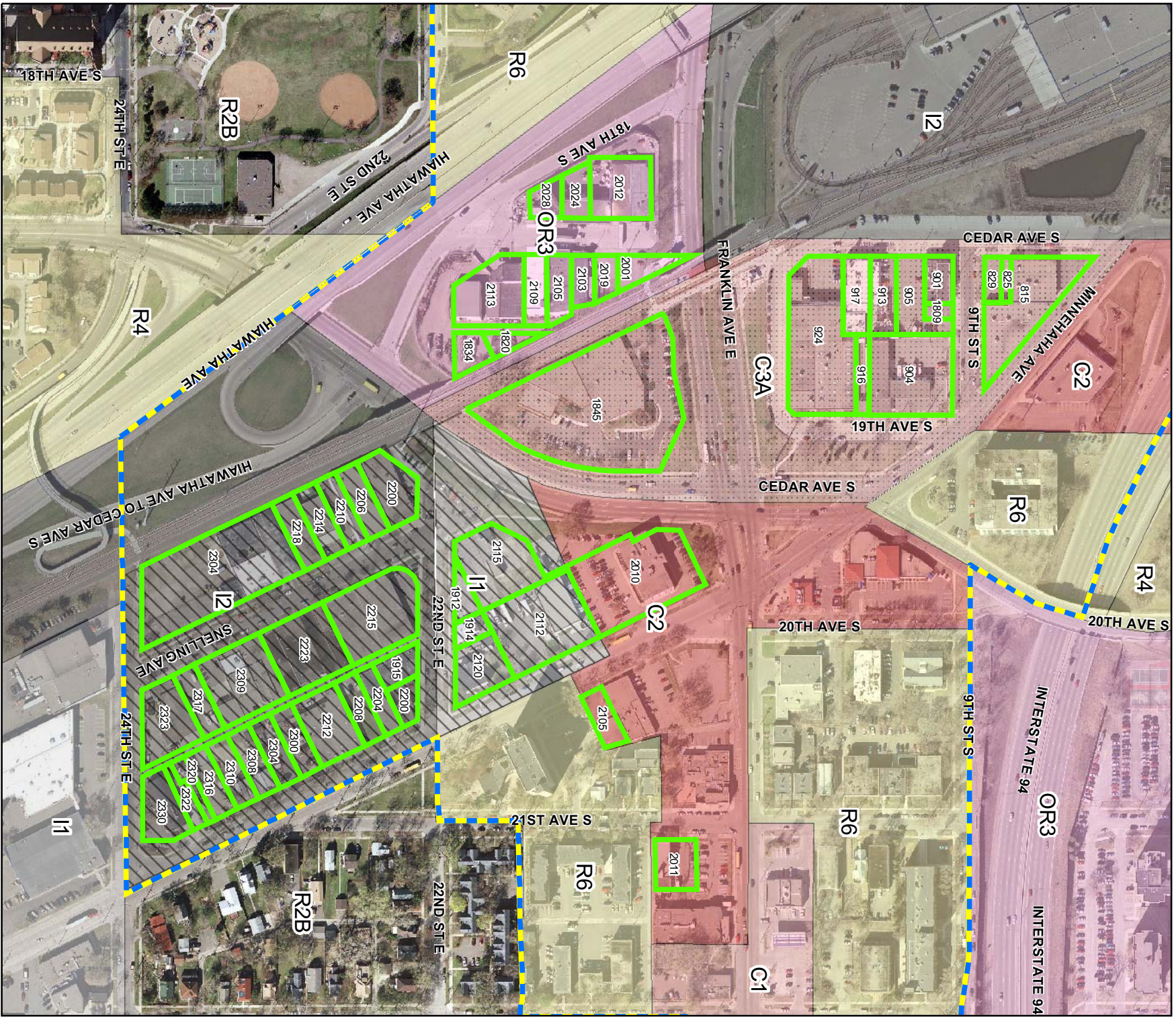
- Study Area
- Parcels with Zoning Change
- C1 and OR1
- C2
- C3A
- C4
- OR2 and OR3
- R1 to R2B
- R3 to R6
- I1
- I2
- I3
- Industrial Living Overlay
- PO Overlay

Note: The North Phillips-NP Overlay District is not impacted by this rezoning study.



### Franklin Avenue LRT Station Area Rezoning Study Proposed Zoning

CPED-Planning Division  
March 26th, 2007



**Franklin Avenue  
LRT Station Area Rezoning Study  
Proposed Zoning**

Study Area  
PO Overlay

Parcels with Zoning Change

C1 and OR1  
C2

C3A  
C4

OR2 and OR3  
R1 to R2B

I1  
I2

R3 to R6  
I3

Industrial Living Overlay

Industrial Living Overlay

Industrial Living Overlay

Industrial Living Overlay

Industrial Living Overlay

Industrial Living Overlay

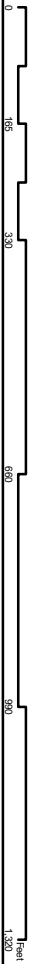
Industrial Living Overlay

Industrial Living Overlay

Industrial Living Overlay

Industrial Living Overlay

Industrial Living Overlay



CPED-Planning Division  
March 26th, 2017

Note: The North Phillips-MP Overlay District is not impacted by this rezoning study.