

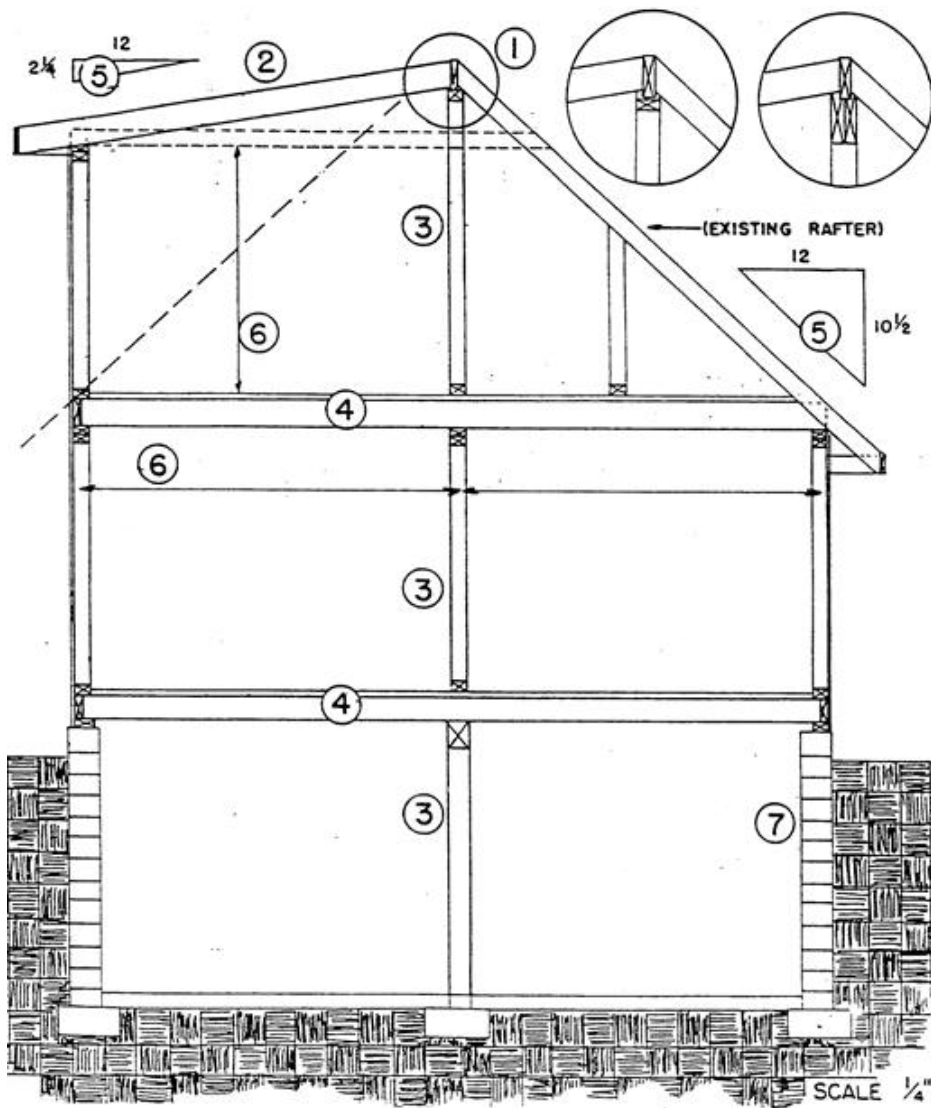
DORMER ADDITION – SHED ROOF DORMER

Minneapolis Construction Code Services
Informational Bulletin

Revised January 2009

Section View of House

Prepare all drawings to scale ($\frac{1}{4}'' = 1'0''$ or $\frac{1}{2}'' = 1'0''$). Size all basic materials (posts, joists, beams, decking) indicating spans and all post locations. **Note:** Attic ventilation and insulation required to meet code.

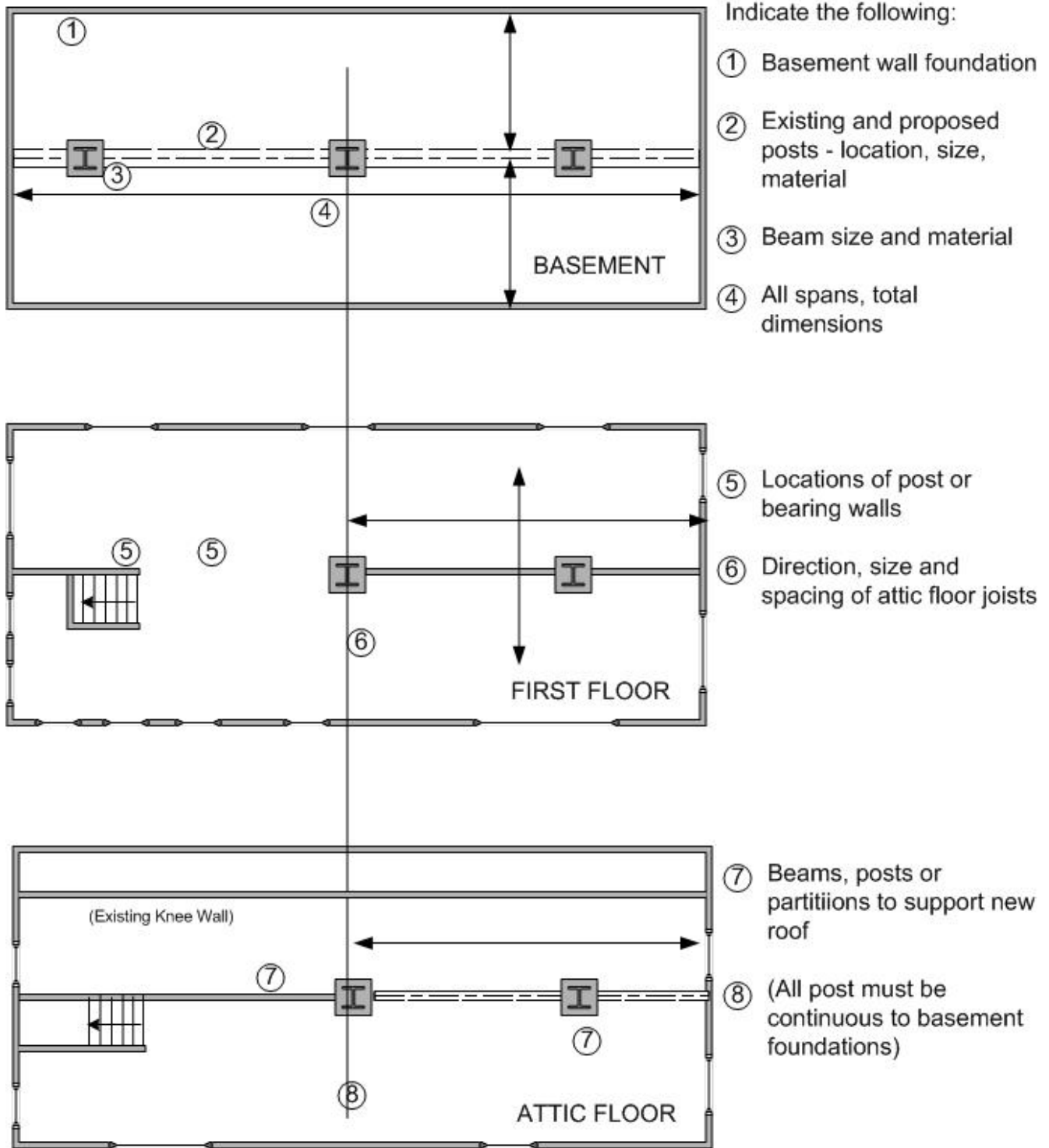


Indicate the following:

- ① New roof support system - bearing wall or beam support at ridge
- ② Size and spacing of new rafters
- ③ Location and dimensions of interior posts, beams or partitions
- ④ Floor joist sizes and spacing
- ⑤ Pitch of roof
- ⑥ dimensions
- ⑦ basement foundations

Floor Plans

Prepare all drawings to scale ($\frac{1}{4}'' = 1'0''$ or $\frac{1}{2}'' = 1'0''$). Size all basic materials (posts, joists, beams, decking) indicating spans and all post locations.



(Include all dimensions, window glass sizes)